



OPEN ACCESS

CLINICAL SCIENCE

Characterising the autoantibody repertoire in systemic sclerosis following myeloablative haematopoietic stem cell transplantation

Burcu Ayoglu ¹, Michele Donato,^{1,2} Daniel E Furst,³ Leslie J Crofford,⁴ Ellen Goldmuntz,⁵ Lynette Keyes-Elstein,⁶ Judith James ^{7,8}, Susan Macwana,⁷ Maureen D Mayes,⁹ Peter McSweeney,¹⁰ Richard A Nash,¹⁰ Keith M Sullivan ¹¹, Beverly Welch,⁵ Ashley Pinckney,⁶ Rong Mao ¹, Lorinda Chung,^{12,13} Purvesh Khatri ^{1,2}, Paul J Utz^{1,2}

Handling editor Josef S Smolen

► Additional supplemental material is published online only. To view, please visit the journal online (<http://dx.doi.org/10.1136/ard-2021-221926>).

For numbered affiliations see end of article.

Correspondence to

Dr Paul J Utz, Department of Medicine, Stanford University School of Medicine, Stanford, CA 94305, USA; pjutz@stanford.edu and Dr Purvesh Khatri, Department of Medicine, Stanford University, Stanford, California, USA; pkhatri@stanford.edu

BA and MD contributed equally. PK and PJU contributed equally.

PK and PJU are joint senior authors.

Received 6 December 2021
Accepted 30 December 2022



© Author(s) (or their employer(s)) 2023. Re-use permitted under CC BY-NC. No commercial re-use. See rights and permissions. Published by BMJ.

To cite: Ayoglu B, Donato M, Furst DE, *et al.* *Ann Rheum Dis* Epub ahead of print: [please include Day Month Year]. doi:10.1136/annrheumdis-2021-221926

ABSTRACT

Objectives Results from the SCOT (Scleroderma: Cyclophosphamide Or Transplantation) clinical trial demonstrated significant benefits of haematopoietic stem cell transplant (HSCT) versus cyclophosphamide (CTX) in patients with systemic sclerosis. The objective of this study was to test the hypothesis that transplantation stabilises the autoantibody repertoire in patients with favourable clinical outcomes.

Methods We used a bead-based array containing 221 protein antigens to profile serum IgG autoantibodies in participants of the SCOT trial.

Results Comparison of autoantibody profiles at month 26 (n=23 HSCT; n=22 CTX) revealed antibodies against two viral antigens and six self-proteins (SSB/La, CX3CL1, glycyL-tRNA synthetase (EJ), parietal cell antigen, bactericidal permeability-increasing protein and epidermal growth factor receptor (EGFR)) that were significantly different between treatment groups. Linear mixed model analysis identified temporal increases in antibody levels for hepatitis B surface antigen, CCL3 and EGFR in HSCT-treated patients. Eight of 32 HSCT-treated participants and one of 31 CTX-treated participants had temporally varying serum antibody profiles for one or more of 14 antigens. Baseline autoantibody levels against 20 unique antigens, including 9 secreted proteins (interleukins, IL-18, IL-22, IL-23 and IL-27), interferon- α 2A, stem cell factor, transforming growth factor- β , macrophage colony-stimulating factor and macrophage migration inhibitory factor were significantly higher in patients who survived event-free to month 54.

Conclusions Our results suggest that HSCT favourably alters the autoantibody repertoire, which remains virtually unchanged in CTX-treated patients. Although antibodies recognising secreted proteins are generally thought to be pathogenic, our results suggest a subset could potentially modulate HSCT in scleroderma.

INTRODUCTION

Systemic sclerosis (SSc) is a severe autoimmune condition with one of the highest morbidity and mortality rates among autoimmune disorders.^{1 2} Although its aetiology is poorly understood, extensive evidence implicates a key role for defects in components of the adaptive immune system in

WHAT IS ALREADY KNOWN ON THIS TOPIC

- ⇒ Autoantibodies are highly prevalent in systemic sclerosis (SSc), but it is unknown if they are pathogenic or epiphenomena.
- ⇒ Haematopoietic stem cell transplant (HSCT) appears to be clinically beneficial in a significant subset of patients.
- ⇒ Antic-cytokine antibodies (ACAs) have been described in SLE and other disorders.

WHAT THIS STUDY ADDS

- ⇒ This study identified new markers that can be used to monitor transplanted SSc patients.
- ⇒ Surprisingly, the autoantibody profile in an individual patient changes very little over time, particularly in patients treated with Cytozan.
- ⇒ ACAs are newly identified in SSc and correlate with clinical parameters.
- ⇒ EGF signalling pathways may be important in SSc and autoantibodies were identified that bind to EGFR.

HOW THIS STUDY MIGHT AFFECT RESEARCH, PRACTICE OR POLICY

- ⇒ New ACA may identify targets for future therapeutic interventions.
- ⇒ High prevalence of autoantibodies specific for thyroid antigens in HSCT-treated patients suggests clinicians should actively monitor for thyroid dysfunction.
- ⇒ Surprisingly, some patients treated with HSCT develop SSc-specific autoantibodies such as anti-CENP-B that suggest patients with diffuse cutaneous SSc have the capacity to develop antibodies more commonly found in limited SSc.

disease pathogenesis. The vast majority of patients with SSc have class-switched, serum IgG anti-nuclear antibodies directed against a variety of ribonucleoprotein and DNA-associated complexes, including topoisomerase I (Scl-70), centromere proteins (CENP-A and CENP-B), Th/To and RNA polymerases I/III.^{3–5} Moreover, B-cells and T-cells are prevalent in skin biopsies of subsets of SSc patients, particularly those with early diffuse

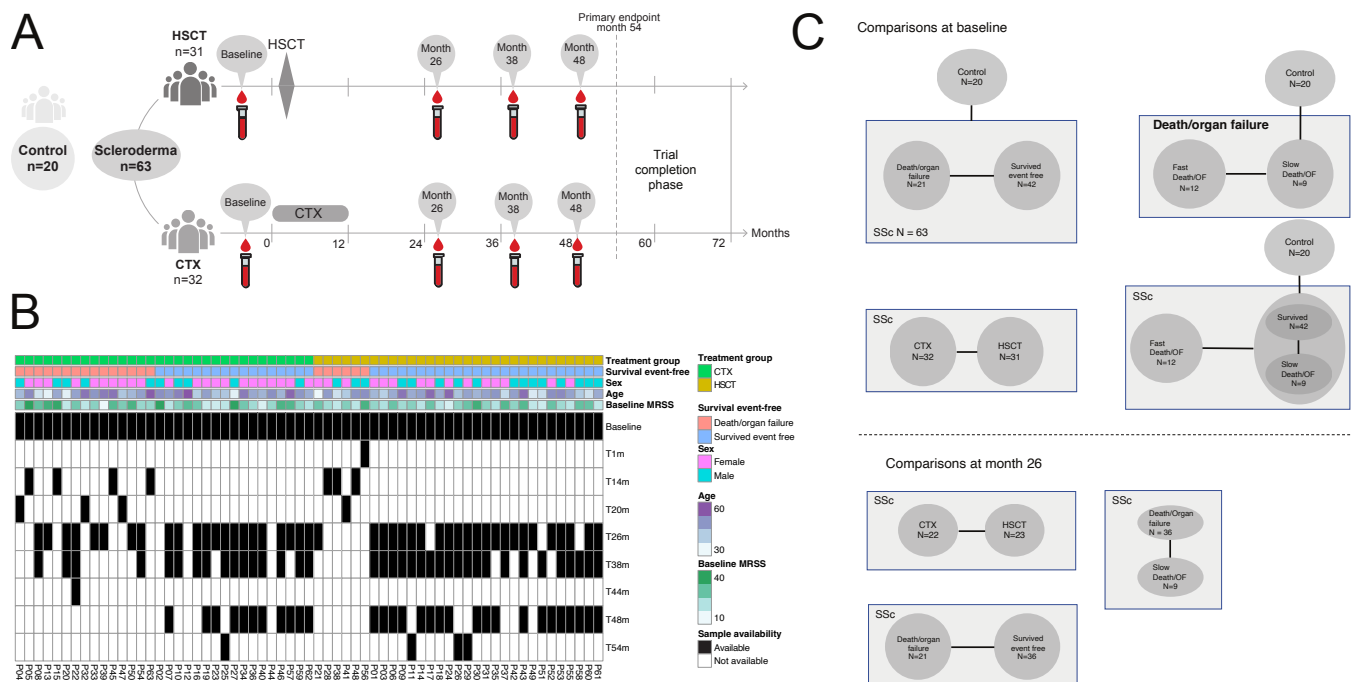


Figure 1 Study design, cohort description and overview of comparative analyses. (A) In the SCOT trial, 75 participants with systemic sclerosis (SSc) were randomly assigned to treatment with haematopoietic stem-cell transplantation (HSCT) or high-dose monthly cyclophosphamide (CTX). Serum samples in each treatment group were collected before treatment (baseline) and at various time points, including months 26, 38 and 48. The primary end point, assessed at month 54, was a global rank composite score. The trial ended when the last subject completed the month 54 evaluation, with a maximum follow-up of 72 months. Of the 75 randomised participants, baseline samples were available from 63 (HSCT n=31; CTX n=32). In addition to the sera from SCOT participants, serum samples from healthy controls (HC, n=20) were included in the study design for characterisation of serum autoantibodies. (B) Each black-filled cell represents availability of a sample from a corresponding SCOT subject (numbered P01–P63). Baseline serum samples were available for 63 of 75 SCOT participants. For a majority of the participants (n=45), serum was available at month 26, followed by month 38 (n=37) and month 48 (n=30). For other time points, serum was available for a small portion of the participants, ranging between 1 and 7 individuals. For each of the 63 SCOT participants, colour annotations indicate treatment arm (HSCT or CTX), treatment response evaluated at month 54 (survival event-free vs death or organ damage), sex, age and modified Rodnan skin score (MRSS) at baseline. (C) Using a multiplexed antigen suspension bead array platform, all available sera from SCOT participants as well as HC were analysed for their autoantibody reactivity profiles. Several group comparisons in terms of treatment arm and event-free survival status were conducted for autoantibody profiles obtained for serum samples at baseline and month 26. SCOT, Scleroderma: Cyclophosphamide Or Transplantation.

cutaneous disease.^{6,7} Clonal expansion of T-cells has been described in early onset SSc but not in stable SSc, supporting the notion that antigen-specific immune responses are important to SSc pathogenesis.^{8–10} Therefore, most SSc therapies used in standard practice (eg, methotrexate, mycophenolate mofetil (MMF) and cyclophosphamide (Cytoxan, CTX)) target either the underlying immune dysregulation hypothesised to drive the disease, or the fibrotic end organ damage (eg, nintedanib)¹¹ and vascular abnormalities.^{12–14}

Although patients with SSc are often treated for specific manifestations with immunosuppressive drugs such as CTX or MMF, treatment strategies vary widely among physicians. Moreover, treatment algorithms for severe, multiorgan SSc remain controversial. In a randomised, open-label, phase II clinical trial called SCOT (Scleroderma: Cyclophosphamide Or Transplantation),¹⁵ patients with SSc were randomly assigned to treatment with myeloablative CD34⁺ selected autologous haematopoietic stem-cell transplantation (HSCT) or with high-dose, monthly CTX. The global rank composite scores at 54 months revealed significant clinical benefits with HSCT compared with CTX treatment. Beyond evaluating the safety and clinical efficacy of HSCT, SCOT was designed to incorporate a variety of mechanistic studies, including whole blood global transcriptome profiling,^{16,17} flow cytometry analyses, serum protein profiling¹⁸

and B-cell receptor repertoire analysis (see companion paper by Adamska *et al* in press in *ARD*). Collectively, the goals of these analyses were to (1) further define the pathophysiology of SSc; (2) identify biomarkers for disease activity and treatment response and (3) understand how the immune repertoire is reshaped when an abnormal adaptive immune system is ablated and reconstituted.

Here, we created a 280-plex, bead-based, custom SSc autoantigen array composed of common connective tissue disease antigens, a small number of vaccine and control antigens, and a large panel of secreted proteins. We then used the array to comprehensively profile IgG autoantibodies in sera from healthy controls (HC) and participants enrolled in the SCOT trial to characterise longitudinal serum autoantibody profiles of participants.

METHODS

Detailed methods are provided in online supplemental methods.

RESULTS

Characterisation of serum autoantibody profiles across SSc participants and HC

We analysed IgG autoantibody reactivities with a 280-plex bead-based antigen array in 212 serum samples in a blinded manner.

Table 1 Overview of sample numbers in each subject group, treatment arm, sampling time point and response group

	CTX participants			HSCT participants			All SSc
	Death/organ failure	Survived event-free	Total CTX	Death/organ failure	Survived event-free	Total HSCT	Total
No of participants	15	17	32	6	25	31	63
Time point	CTX time points			HSCT time points			All SSc time points
	Death/organ failure	Survived event-free	Total CTX	Death/Organ failure	Survived event-free	Total HSCT	Total (per time point)
Baseline	15	17	32	6	25	31	63
T1m	0	0	0	1	0	1	1
T14m	4	0	4	3	0	3	7
T20m	3	0	3	1	0	1	4
T26m	8	14	22	1	22	23	45
T38m	4	12	16	0	21	21	37
T44m	1	0	1	0	0	0	1
T48m	0	11	11	0	19	19	30
T54m	0	1	1	0	3	3	4
Total	35	55	90	12	90	102	192

A total of 192 serum samples from 63 SCOT participants were available. The table provides a detailed overview of sample numbers per time point for each treatment arm. CTX, cyclophosphamide; HSCT, haematopoietic stem cell transplant; SCOT, haematopoietic stem cell transplant; SSc, systemic sclerosis.

This included 192 serum samples from treated SCOT subjects (who underwent transplant or received at least 9 of 12 CTX doses) with specimens at baseline (n=63), at least one postbaseline specimen at months 26, 38, 48 (or month 54 if missing) or at the last time point prior to death or organ failure, as well as 20 specimens from HC with age and sex distributions similar to the SCOT participants (online supplemental table 1). The number of samples in each subject group, treatment arm, sampling time point and outcome group (defined as surviving event-free vs deceased or had organ failure) are summarised in figure 1A,B and table 1.¹⁵

Baseline samples (HSCT, n=31; CTX, n=32) were compared with samples at month 26 (HSCT, n=23; CTX, n=22; figure 1C). We selected this time point because transplanted participants would have been fully engrafted by month 26, and fewer samples (≤ 36 samples) were available for analysis at later time points (figure 1B and table 1).

Online supplemental figure 1 shows a heat map displaying all IgG antibody reactivities for all 63 SCOT participants only at baseline, as well as 20 HC participants. Collectively, this represents 20 169 data points. Online supplemental figure 2 shows antibody reactivities for all 63 SCOT participants at all time points that were studied, including baseline (online supplemental figure 2, bottom panel, 192 SSc samples total) and for all 20 HC participants (online supplemental figure 2, top panel), representing 46 899 data points.

Using unsupervised clustering, we observed that all individual participants clustered with themselves across multiple time points, demonstrating that the IgG antibody repertoire is stable in an individual subject over time, even when the immune system is ablated and reconstituted with HSCT (online supplemental figure 2). HC participants had lower reactivity to traditional autoantigens and to secreted proteins than SSc participants. Approximately 30% of antigens were unreactive in all samples tested. Finally, we observed strong, scattered reactivities among SSc participants. Many of these represent the discovery of potentially biologically important autoantibodies specific for secreted proteins in individual patients.

Significance analysis of microarrays (SAM) algorithm¹⁹ identified 60 statistically significant autoantigens between SSc participants (n=63), irrespective of the treatment arm, and HC

participants (n=20) at baseline (q value $\leq 10\%$ and $|\log_2$ fold-change ≥ 1 ; figure 2A; online supplemental figure 1 and online supplemental table 2). Among these 60 antigens, we identified autoantibodies specific for many antigens within the ‘Standard SSc Antigen’ panel (see online supplemental methods) known to be relatively specific for, and associated with, clinical phenotypes of SSc including Scl-70, CENP-B, U1-snRNP, histone proteins, POLR3H and B23/nucleophosmin (figure 2A,B).

Interestingly, autoantibodies specific for antigens from the ‘Traditional Autoantigen’ subpanel (see online supplemental methods) associated with other chronic autoimmune diseases²⁰ were more prevalent at low levels in baseline sera of SSc participants than HC. These include antigens such as DNA, Ro52/TRIM21, Ro60, La, Ku, Smith proteins, RNP proteins, thyroglobulin, sp100, annexin V, $\beta 2$ GPI, cardiolipin, azurocidin and SRP54. Further, we found statistically significant autoantibodies against 10 of the 80 serum factors included in the ‘Discovery Autoantigen’ array subpanel (cytokines IL-1 β , IL-2, IL-3, IL-8, IL-13 and TNF α ; growth factors (granulocyte colony stimulating factor, GCSF and BMP4) and chemokines (CCL2 and CXCL4)). Collectively, our analysis identified autoantibodies known to be specific for SSc, low levels of traditional autoantibodies associated with other systemic autoimmune rheumatic diseases and novel autoantibodies directed against cytokines, chemokines and growth factors.

Comparison of serum autoantibody profiles between SCOT participants treated with HSCT or CTX

We hypothesised that a subset of serum autoantibodies would change in HSCT-treated compared with CTX-treated participants. No differences were detected in baseline samples between SSc participants treated with HSCT (n=31) or high-dose monthly CTX (n=32, data not shown). Next, we compared the HSCT and CTX treatment arms at 26 months after treatment initiation (HSCT, n=23; CTX, n=22, table 1 and figure 1B), and identified antibodies (q value $\leq 10\%$ and $|\log_2$ fold-change ≥ 1) against six self-antigens and two viral antigens, hepatitis B surface antigen (HBsAg) and Epstein-Barr virus (EBV) antigen p-18 (figure 3A and online supplemental table 3). Participants in the HSCT arm (but not CTX arm) were vaccinated for Hepatitis

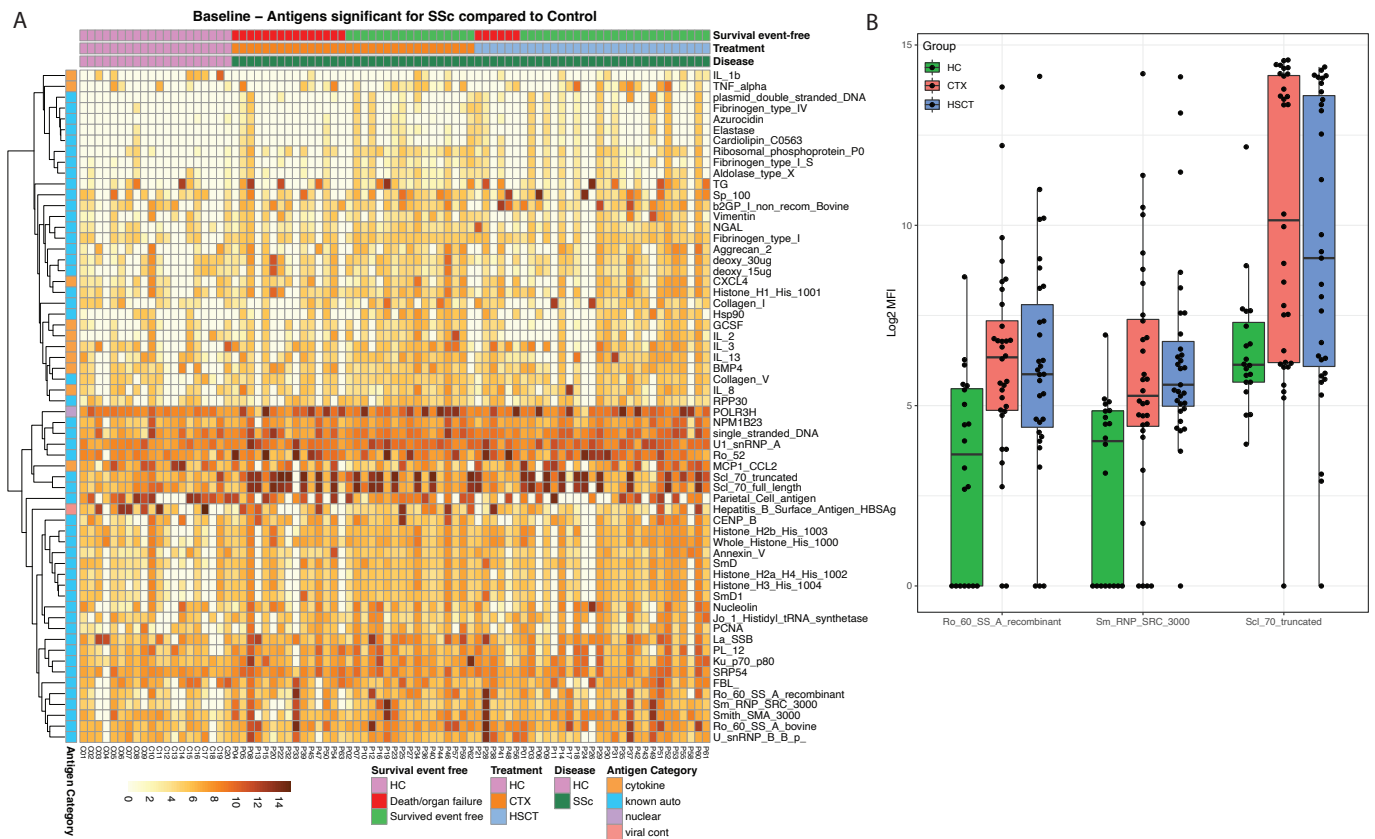


Figure 2 Comparison of serum autoantibody profiles of SCOT participants at baseline and HC. (A) A heat map showing log₂ transformed MFI values for serum autoantibody reactivity in baseline SCOT participants (n=63) and HC (n=20) against 62 antigens identified to be significantly different between groups (q<10% and absolute value of log₂ fold-change>1). Heat map columns represent serum samples and rows represent statistically significant antigens. For each sample, their sample group, treatment arm and treatment response are colour-annotated. IL-1b, interleukin-1 beta; TNF-alpha, tumour necrosis factor alpha; TG, thyroglobulin; SP100, interferon-inducible autoantigen associate with primary biliary cirrhosis; B2GP1, beta 2 glycoprotein one non-recombinant protein from bovine source; NGAL, neutrophil gelatinase associate lipocalin; deoxy, DNA/DNA; CXCL4, CXC chemokine ligand 4/platelet factor-4; HSP90, heat shock protein 90; GCSF, granulocyte colony stimulating factor; IL, interleukin (2, 3, 8, 13); BMP4, bone morphogenetic protein 4; RPP30, ribonuclease P protein subunit p30; Polr3h, RNA polymerase III; NPM1B23, nucleophosmin B23; U1-snRNP-A, U1-small nuclear ribonucleoprotein A; MCP1/CCL2, monocyte chemoattractant protein 1/chemokine ligand 2; Scl70, scleroderma autoantigen 70; CENPB, centromere protein autoantigen B; SmD, Smith protein D; PCNA, proliferating cell nuclear antigen; PL-12, alanyl t-RNA synthetase; Ku, Ku protein p70/80; SRP54, signal recognition particle 54; FBL, fibrillarlin; Sm/RNP C, Smith/U1-small nuclear ribonucleoprotein C; Smith/SMA, Smith protein A; U snRNP_B_B, U1-small nuclear ribonucleoprotein Smith proteins B/B'. (B) A box and whisker plot showing the top three antigens ranked by the q-value from the SAM analysis comparing the autoantibody levels in the baseline SCOT participants with the levels in healthy controls. For each sample group, the box and whisker plot represents log₂ transformed MFI values within lower and upper quantile (box), the median (horizontal line within box), 5th and 95th percentiles (whiskers), and outliers (dots). MFI, median fluorescence intensity; SCOT, Scleroderma: Cyclophosphamide Or Transplantation.

B at post-transplantation months 14, 16 and 26. Serum antibody profiling confirmed that all vaccinated participants had vaccine responses, although these responses varied among those vaccinated. Conversely, we identified slightly higher serum antibody reactivity in CTX participants against EBV p-18, the significance of which is unclear.²¹

Among the six statistically significant self-antigens at month 26, HSCT-treated participants had higher serum autoantibody levels against bactericidal permeability-increasing and epidermal growth factor receptor (EGFR), whereas CTX-treated participants had higher autoantibody levels against SSB/La, parietal cell antigen, glycyl-tRNA synthetase (EJ) and CX3CL1 (figure 3A,B).

Comparison of temporal changes in serum autoantibody profiles between SCOT CTX and HSCT arms

We applied a linear mixed model to each antigen to compare the serum autoantibody repertoire between each treatment

arm. Random effects due to individual subject differences were included. Autoantibodies specific for three antigens (HBSAg, CCL3 and EGFR) showed statistically significant increases in the HSCT arm (false discovery rate (FDR) <20%) compared with the CTX arm, in which trends were largely unchanged (figure 4A).

We then asked if there were subject-specific antigen trends by fitting a standard linear mixed model to each subject-antigen intensity profile (online supplemental tables 4–7). Based on the distribution of the slopes of the regression lines, subject-antigen pairs with slopes >2 SD were identified. Eight of 32 HSCT-treated and one of 31 CTX-treated participants had temporally varying serum antibody profiles for one or more of 14 antigens with statistical significance (p<0.05; figure 4B). This analysis revealed several clinically relevant changes in the autoantibody repertoire in a subset of HSCT-treated participants that were not observed among CTX-treated participants. Six participants were

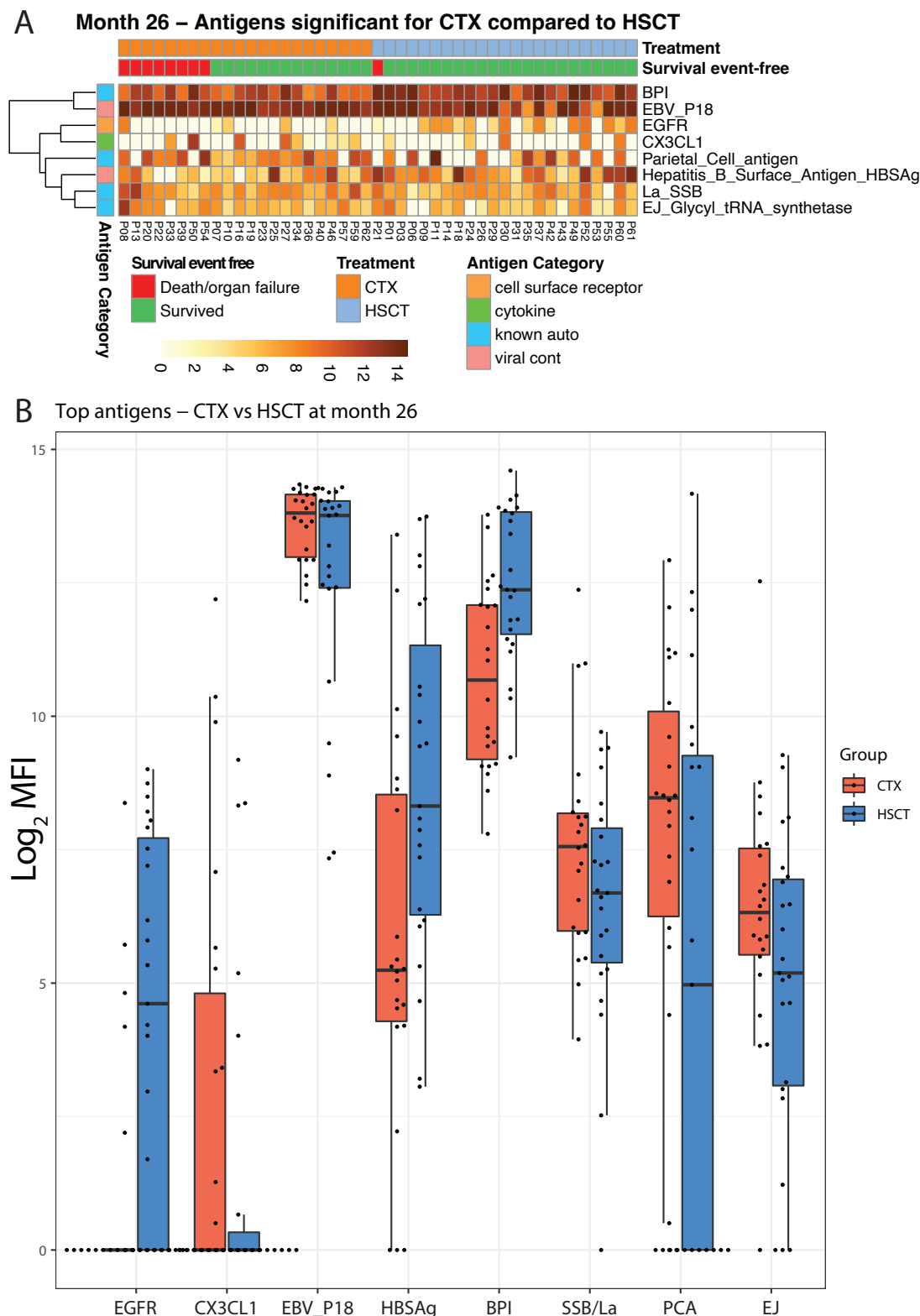


Figure 3 Comparison of serum autoantibody profiles of SCOT participants between the HSCT and CTX arm at month 26. (A) A heat map showing log₂-transformed MFI values for serum autoantibody reactivity in SCOT participants treated with HSCT (n=23) or CTX (n=22) against 27 antigens. Antigens identified to be statistically significantly different (q<10% and absolute log₂ fold-change >1) at month 26 are shown. Heat map columns represent serum samples and rows represent statistically significant antigens. For each sample, treatment arm and treatment response are colour-annotated. BPI, bactericidal permeability inducing protein; PCA, parietal cell antigen; EJ, EJJ glycyL-tRNA synthetase; CX3CL1, CX3C motif chemokine ligand 1/fractalkine; EBV-p18, Epstein-Barr Virus protein p18. (B) A box and whisker plot showing the top six self-antigens and two viral antigens ranked by the q-value from the SAM analysis comparing the antibody level in the SCOT participants treated with CTX with the level in participants treated with HSCT. For each sample group, the box and whisker plot represents log₂-transformed MFI values within lower and upper quantile (box), the median (horizontal line within box), 5th and 95th percentiles (whiskers) and outliers (dots). HSCT, haematopoietic stem cell transplant; SCOT, Scleroderma: Cyclophosphamide Or Transplantation. MFI, median fluorescence intensity.

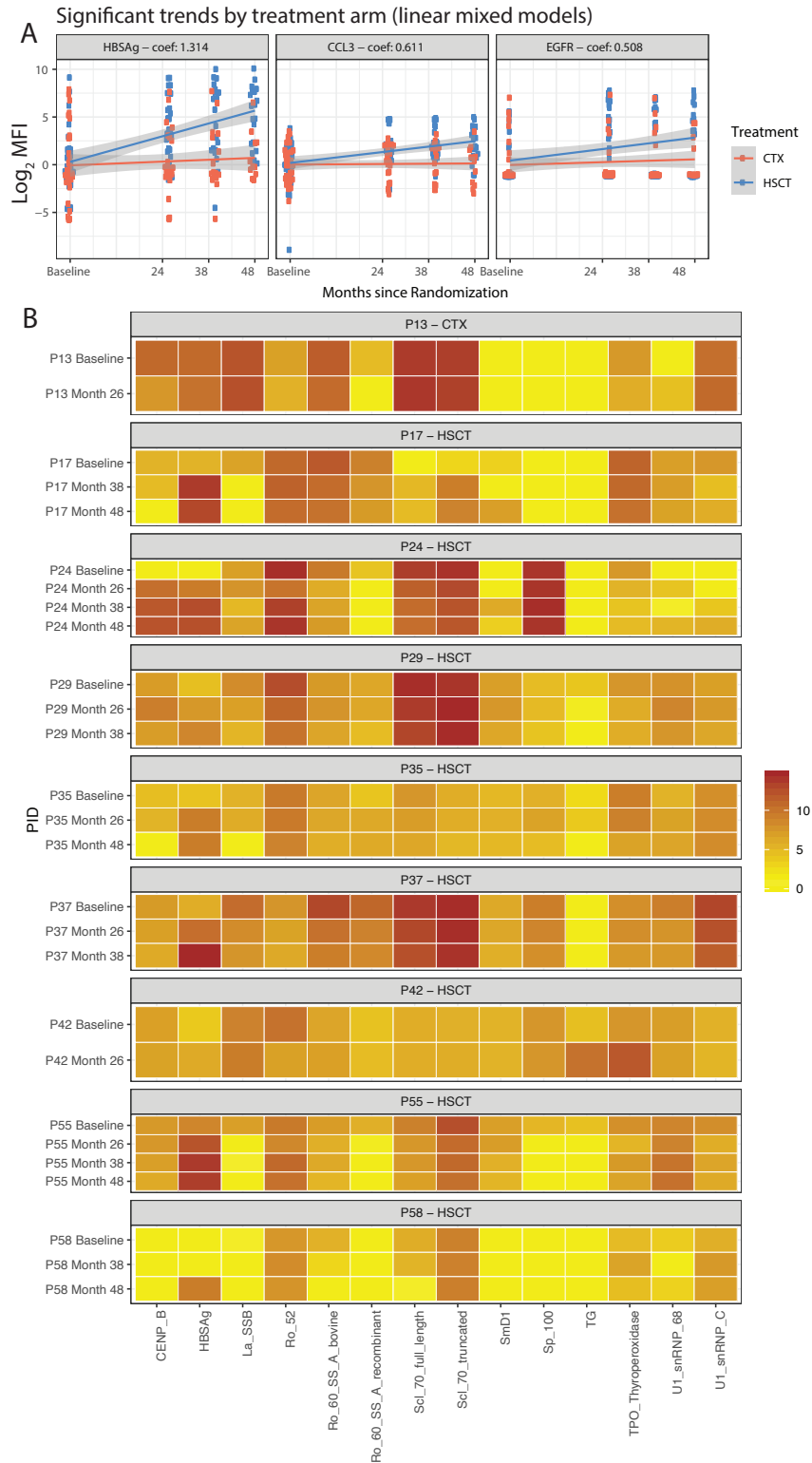


Figure 4 Comparison of temporal changes in serum autoantibody profiles between the CTX and HSCT treatment arms. (A) Linear mixed model analysis was used to identify antigens showing significantly different temporal trends between the two treatment arms. In each model, random effect due to individual subject differences was included. The line plots show three antigens with significantly different trends between treatment arms (FDR $p < 0.2$). The lines represent the mean trend over time within each treatment arm. Coefficients are reported in each panel label. A positive coefficient indicates a higher slope for HSCT participants compared with CTX participants, which indicates that reactivity to the antigen increases more, over time, in HSCT-treated subjects compared with CTX-treated participants. (B) Subject-specific antigen trends were obtained by fitting a standard linear model to each subject-antigen intensity profile. Based on the distribution of the slopes of the regression lines, subject-antigen pairs with slopes > 2 SD from the distribution mean were identified for 8 of 32 HSCT-treated participants and only 1 of 31 CTX-treated participants. The panel shows log₂-transformed serum autoantibody profiles for 14 temporally-varying antigens in all nine participants across their available sampling time points. CCL3, chemokine ligand 3; CENP, centromere protein autoantigen; EGFR, epidermal growth factor receptor; HBSAg, hepatitis B surface antigen; HSCT, haematopoietic stem cell transplant; TPO, thyroperoxidase; TG, thyroglobulin; Scl70, scleroderma autoantigen 70.

Scl-70 positive at baseline (5 HCST and 1 CTX). Scl-70 autoantibody titres decreased in two participants (participants #55 and #58), while one subject (subject #17) was initially Scl-70 negative at baseline and seroconverted to Scl-70 positive at month 38 and remained Scl-70 positive at month 48 (figure 4B, columns 7 and 8). Autoantibodies specific for both of the 52kD and 60kD Ro proteins and the SSB/La protein were more variable, and tended to decrease in titre following HSCT (figure 4B, columns 3–6). Although only subject #42 developed new reactivity to TPO and TG, analysis of all participants in the SCOT trial demonstrated that 17 of 31 HSCT-treated participants developed varying levels of new-onset TPO or TG antibodies during the course of the trial, while only 3 of 32 CTX-treated participants developed antithyroid antibodies ($p=0.003$; online supplemental figure 2). Subject #24 was Scl-70 positive at baseline but then developed persistent, high-titre anti-CENP antibodies (associated with limited SSc) at 26 months following HSCT (figure 4B, column 1).

Comparison of baseline serum autoantibody profiles and clinical outcomes

We investigated whether baseline levels of specific autoantibodies were associated with clinical outcomes, irrespective of whether a patient was treated with CTX or HSCT. We compared autoantibody profiles obtained at baseline in those participants who survived event-free ($n=42$) vs deceased or had organ failure ($n=21$). Autoantibodies directed against 20 unique antigens were significantly different in patients who survived event-free compared with those who were deceased or had organ failure at 54 months (q value $<10\%$, $|\log_2$ fold-change >1 (online supplemental table 8, 9). Surprisingly, levels of these autoantibodies were higher in participants who survived event-free ($n=20$ antigens) than those who deceased or had organ failure (figure 5A). Nine proteins were secreted factors including interleukins (IL-18, IL-22, IL-23 and IL-27), Interferon- $\alpha 2A$, stem cell factor (SCF), TGF- β , macrophage CSF (M-CSF) and migration inhibitory factor (MIF). Of these, we identified the top three autoantigen targets as IL-27, interferon- $\alpha 2A$ and PDC-E2 in those who survived event-free (figure 5B). These autoantibodies may serve as biomarkers in future studies to determine whether they can predict successful clinical responses to HSCT.

DISCUSSION

A fundamental question in treating severe autoimmunity with transplantation is whether the adaptive immune system 'reboots' the B cell repertoire, leading to antigen-specific tolerance and clinical improvement. We demonstrate that patients with SSc at baseline have serum autoantibodies that recognise a plethora of autoantigens commonly targeted in SSc and other CTDs, while HC have significantly less or no reactivity to standard SSc autoantigens. Our data also show that individual SCOT participants reproducibly cluster with themselves across multiple time points, demonstrating that the bulk of the antibody repertoire is strikingly stable in the same individual over time. This was particularly the case in CTX-treated subjects, where, somewhat surprisingly, no overt changes were observed over the 54-month trial.

Few studies have described autologous HSCT to treat severely ill patients with CTDs such as SLE and SSc. In one study, an SSc patient was reported to develop multiple autoimmune diseases following HSCT.²² Clinical manifestations were accompanied by elevated TGF- β and IL-17, and low

levels of regulatory T cells. In a patient with SLE, autoantibodies and SLE disease activity improved dramatically following HSCT.²³ The patient subsequently developed factor VIII autoantibodies and haemophilia that was refractory to all treatment, but then resolved spontaneously when SLE relapsed 3 years following transplantation. In a retrospective review of 155 autologous HSCT autoimmune disease transplants, only six patients developed secondary autoimmunity, two of whom were SLE patients who developed autoimmune haemophilia.²⁴ Large, uncontrolled autologous HSCT trials have reported rare development of secondary autoimmunity (eg, Evans syndrome, thyroiditis and erosive osteoarthritis) in SLE HSCT transplanted patients. New-onset, clinically evident autoimmune disorders were observed in 7 subjects in the SCOT study ($n=3$ HSCT: RA, Sjögren's, and thyroiditis; $n=4$ CTX: myositis, RA, psoriasis and type 1 diabetes), despite the observation that autoantibody profiles changed most markedly in patients in the HSCT arm of the trial (figure 4).

Adamska *et al* in a companion paper in *ARD* characterised the heavy and light chain immunoglobulin gene repertoire from the same SCOT subjects that we analysed in this study.²⁵ Their results suggest that autoimmune B cells are depleted during the conditioning regimen and that unswitched B cells continue to repopulate the repertoire after engraftment, leading to a new, 'autotolerant stabilisation' of the B cell repertoire. Our autoantigen array analysis is consistent with the above data, supporting the hypothesis that transplantation limits expansion of pathogenic clones and that a limited cadre of new antigens are instead targeted over time in transplanted patients, particularly thyroid-specific antigens. Contrary to conventional beliefs that higher levels of autoantibodies at baseline might correlate with worse clinical outcomes, our data showed that autoantibody levels were higher in participants who survived event-free than those who died or had organ failure, for all 20 baseline autoantibodies that were identified (figure 5A). In subject-specific longitudinal analysis, 9 participants had changing levels of autoantibodies against 1 or more antigens among a pool of 14 antigens. In pooled longitudinal analyses, antibodies against three antigens (HBSAg, which was expected since transplanted patients were vaccinated for hepatitis B at months 14, 16 and 26 after HSCT, EGFR and CCL3) increased in the HSCT group over time. Taken together, these data suggest that some autoantibodies (eg, anti-EGFR or anti-CCL3) may have previously unrecognised immunomodulatory functions associated with HSCT that may play a role in reconstituting the B-cell repertoire in a subset of patients.

Anti-cytokine antibodies (ACAs) have been increasingly recognised in many different immunodeficiency and infectious diseases,²⁶ more recently in severely ill COVID-19 patients^{27–29} and in patients with ARDS caused by many different pathogens,³⁰ and in autoimmune diseases such as RA, SLE, autoimmune polyendocrine syndrome type I, multiple sclerosis (MS) and others.^{31 32} Here, levels of ACA against multiple cytokines (IL-1 β , IL-2, IL-3, IL-8, IL-13 and TNF α) were elevated in baseline SSc sera compared with sera from HC. Increases in ACA against many additional cytokines (IL-18, IL-22, IL-23, IL-27, interferon- $\alpha 2A$, SCF, TGF β , M-CSF and MIF) were observed in SSc participants who survived event-free endpoint compared with those who died or developed organ failure. In contrast, antibody titres against traditional SSc autoantigens such as Scl-70 did not correlate with clinical endpoints. The most likely explanation for these

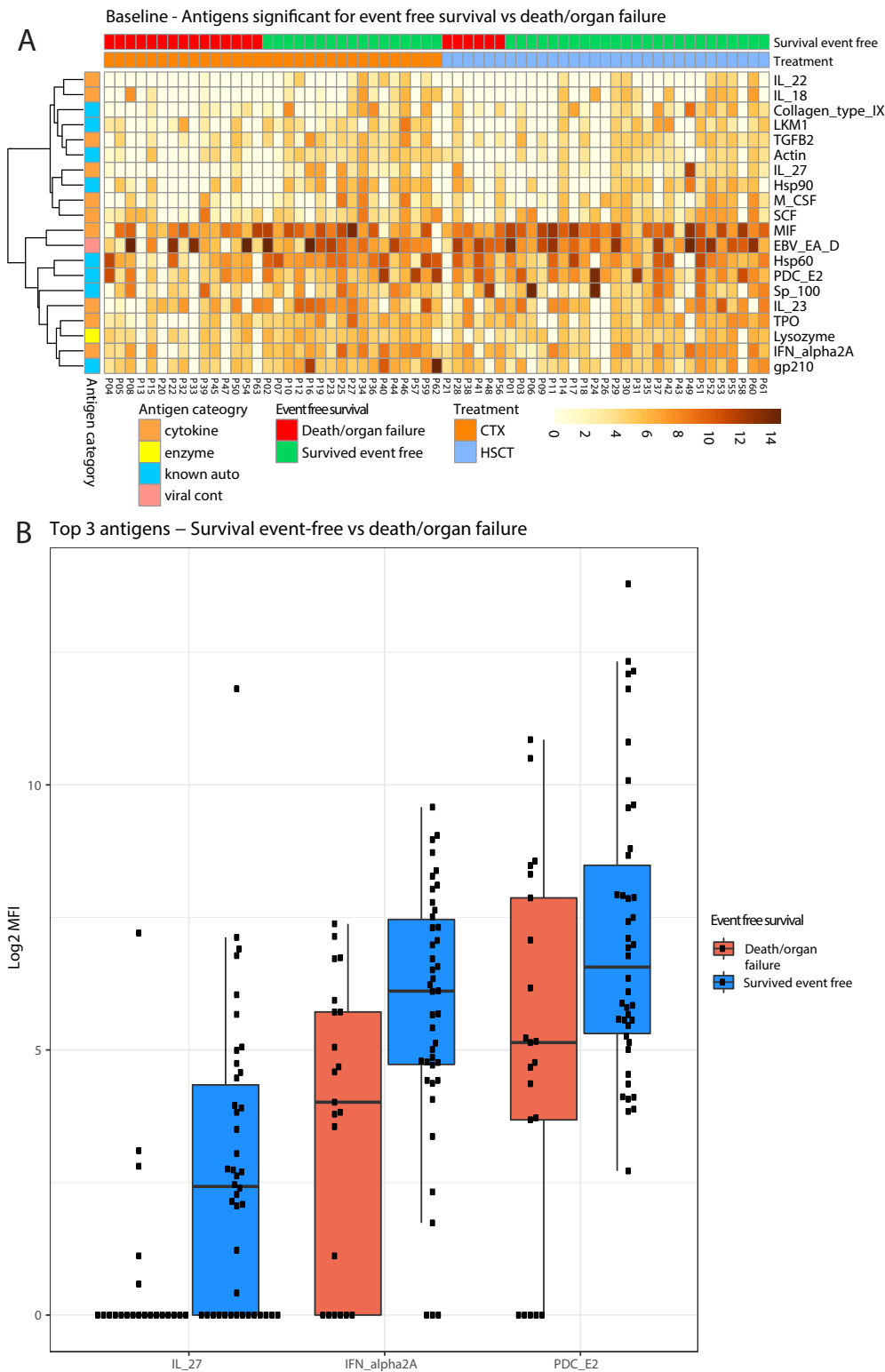


Figure 5 Comparison of baseline serum autoantibody profiles of SCOT participants who were responsive or not-responsive to their assigned treatments. (A) A heat map showing log₂-transformed MFI values for baseline serum autoantibody reactivity against 20 antigens in SCOT participants who survived event-free (n=42) vs died or had organ damage (n=21). Antigens identified to be statistically significantly different (q-value<15% and absolute log₂ fold-change>2) are shown. Heat map columns represent serum samples and rows represent statistically significant antigens. For each subject, treatment arm and treatment response are colour-annotated. (B) Boxplots representing the top three autoantibodies that significantly differ at baseline between SCOT participants who survived event-free versus died or had organ damage. Each dot shows log₂-transformed MFI value representing baseline serum autoantibody reactivity against IL-27, IFN-α2a and PDC-E2. For each sample group, the box-and-whisker plot represents log₂-transformed MFI values within lower and upper quantile (box), the median (horizontal line within box), percentiles of 5 and 95% (whiskers) and outliers (dots). HSCT, haematopoietic stem cell transplant; M-CSF, macrophage colony stimulating factor; MFI, median fluorescence intensity; MIF, macrophage migration inhibitory factor; SCF, stem cell factor; SCOT, Scleroderma: Cyclophosphamide Or Transplantation; TGF-B, transforming growth factor beta.

findings is that traditional autoantigens such as Scl-70 are not pathogenic and serve largely as diagnostic markers, and that memory B cells specific for such antigens are spared from the lymphoablation regimen used in the SCOT protocol. Although we did not test the functions of ACA in our studies, antibodies with receptor blocking activity (such as anti-IFN- α) are unlikely to be induced during transplantation and are rarely observed in patients with ARDS or connective tissue diseases such as SLE.^{30,33} ACAs are generally considered to be pathogenic, at least in the setting of acute viral infections; however, our results suggest that some ACA may modulate immune responses in potentially favourable ways, warranting future functional characterisation of the many ACAs identified in our experiments.

Previous studies have suggested the involvement of growth factor receptors such as EGFR and PDGFR- β in the pathogenesis of SSc, particularly SSc-associated pulmonary arterial hypertension.^{34–38} Increased EGFR protein expression in fibroblasts from patients with SSc has been demonstrated.^{35,36} An integrated, multicohort analysis of SSc skin transcriptomic data identified a 415-gene SSc signature whose functional characterisation revealed significant enrichment for EGFR ligands.³⁹ Pathway analysis of the 415-gene signature identified PI3K/Akt signalling components, supporting the involvement of EGFR and its downstream pathways in SSc pathogenesis. In another report, autoantibodies to EGFR have been found in autoimmune mice, as well as in subpopulations of human patients with SSc, and to a lesser extent in SLE patients.⁴⁰ Since HSCT was clinically beneficial in the SCOT trial, and EGFR signalling pathways are prominently activated in the 415-gene SSc signature, we postulate that EGFR autoantibodies may function as steric inhibitors of EGF ligands. Future studies are required to understand the precise roles of anti-EGFR autoantibodies in SSc, as well as the mechanisms underlying their production and potential roles in HSCT in general.

The second self-antigen target in HSCT participants at month 26 was CCL3. Increased levels of CCL2 and CCL3 have been reported in sera and peripheral blood mononuclear cells from SSc patients, and positively correlated with the presence of pulmonary fibrosis.^{41,42} CCL3, CCL2 and CCL5 have been implicated in the pathogenesis of SSc through recruitment of monocytes and T helper lymphocytes, and upregulation of adhesion molecules which then enhance diapedesis.^{41–45}

Several of the autoantibodies that we discovered are clinically actionable, particularly antibodies specific for thyroid tissue. Strikingly, 17/31 (55%) HSCT-treated participants developed new-onset TPO and/or TG during the trial, while only 3/32 (9%) of CTX-treated participants developed antithyroid antibodies ($p=0.005$). Compared with the general population, a higher prevalence of antithyroid antibodies has been reported in SSc patients,⁴⁶ particularly in limited SSc.⁴⁷ Thyroid autoimmunity is also observed in transplantation in general. TBI decreases expression of TPO in cultured thymocytes and impairs thyroid hormone synthesis.³⁷ Development of antithyroid autoimmunity during immune restoration is consistent with previous reports of transient autoimmune thyroiditis,³⁸ and suggests that HSCT in general (as opposed to HSCT in SSc or SSc itself) is associated with development of new-onset TPO and TG observed in this trial. Our data clearly suggests that TPO, TG and thyroid function should be closely monitored in HSCT-treated patients. Other autoantibodies which would be useful in identifying preclinical

autoimmunity where an intervention could be considered, include antiparietal autoantibodies (associated with pernicious anaemia) and anti-PDC (associated with primary biliary cirrhosis).

Although the multiplexed arrays used here were developed solely for research purposes, bead-based arrays for measuring autoantibodies against traditional connective tissue disease antigens are available as a clinical-grade assay at some academic medical centres.⁴⁸ For our research-grade assays, we rigorously validated 31 antigens using 30 unique monoclonal antibodies and/or prototype human serum samples derived from patients who met classification criteria for scleroderma, lupus, myositis, Sjögren's and other CTDs (online supplemental figure 3). We further compared our array results for a common autoantigen (Ro60) with a clinical grade assay, demonstrating that many reactivities are 'true positives' ($R=0.99$, $p=0.0003$ for the top six most reactive samples tested (online supplemental figure 4). For ACA measurements, our lab²⁹ and the Casanova lab²⁷ have used multiplexed bead-based arrays that were directly compared with ELISAs,²⁷ and in previous reports we also compared ELISA and planar arrays for two different ACAs with excellent correlation ($r=0.89$ and 0.98).⁴⁹ These same prototype serum samples were used to develop our most recent generation Luminex bead assay.^{29,30}

Autoantibodies that are detectable in research settings, but may not reach a threshold for 'positivity' in a clinical lab, may still be important for understanding evolution of autoimmunity. As just one example, a recent paper on long COVID-19⁵⁰ measured only six autoantibodies (against IFN- α 2, Ro, La, U1-RNP, Jo-1 and ribosomal protein P1) using research-grade ELISAs and identified correlations between low levels of autoantibodies and specific long COVID-19 clinical manifestations.⁵⁰ We conclude that a subset of autoantibodies we identified using the SAM algorithm are present at levels that may be clinically relevant (see online supplemental figures 3 and 4). In some SCOT patients, measurements of a subset of autoantibodies are likely below what would be considered as 'positive' by practising clinicians, yet still provide meaningful clues about the underlying biology of HSCT in scleroderma.

In summary, HSCT is emerging as a promising therapy for severe diffuse SSc, and for other autoimmune diseases with unmet medical needs. However, little is understood regarding how the abnormal immune system in SSc or other autoimmune diseases is reshaped by HSCT, following which ongoing tissue damage is reduced or eliminated. Our results and those of Adamska *et al* demonstrate that the autoantibody repertoire is remarkably stable in HSCT-treated patients over time, although significant differences in autoantibody targets were identified in a subset of HSCT-treated subjects, particularly antigen targets such as soluble cytokines and chemokines, and cell surface receptors. Future studies that integrate single-cell B cell phenotyping, antibody repertoire analysis and antibody functional assays are necessary to better understand how the B cell repertoire is reshaped in autoimmune diseases following HSCT.

Author affiliations

¹Department of Medicine, Stanford University School of Medicine, Stanford, California, USA

²Stanford Institute for Immunity Transplantation and Infection, Stanford, California, USA

³Department of Medicine, University of California, Los Angeles, California, USA

⁴Division of Rheumatology and Immunology, Vanderbilt University Medical Center, Nashville, Tennessee, USA

⁵Division of Allergy, Immunology, and Transplantation, National Institute of Allergy and Infectious Diseases, Bethesda, Maryland, USA

⁶Rho Inc, Durham, North Carolina, USA

⁷Arthritis & Clinical Immunology, Oklahoma Medical Research Foundation, Oklahoma City, Oklahoma, USA

⁸Departments of Medicine and Pathology, University of Oklahoma Health Sciences Center, Oklahoma City, Oklahoma, USA

⁹Department of Rheumatology, The University of Texas Health Science Center, Houston, Texas, USA

¹⁰Colorado Blood Cancer Institute, Denver, Colorado, USA

¹¹Department of Medicine, Duke University Medical Center, Durham, North Carolina, USA

¹²Departments of Medicine & Dermatology, Stanford University, Stanford, California, USA

¹³Palo Alto VA Health Care System, Palo Alto, California, USA

Twitter Purvesh Khatri @purveshkhatri

Acknowledgements The authors acknowledge Xihui Yin and Alyssa Nicole Ralliston for assistance with creating online supplemental figure 4.

Contributors BA designed and performed the protein array experimental work; BA and MD analysed the array data; SM performed clinical-grade confirmatory assays for Ro60, BA, PJu, PK, JJ, MDM, LC, LJ, AP, KMS, EG, LK-E and BW interpreted the data; LJ, DEF, EG, LK-E, MDM, PM, RAN, KMS, BW, AP and LC provided the samples and clinical data; BA, MD, PJu, PK and RM wrote the paper with contribution from all authors. PK and PJu had access to all data and are the guarantors. All authors reviewed the manuscript and provided scientific input.

Funding BA was funded by the Knut and Alice Wallenberg Foundation International Postdoctoral Scholarship Programme for Stanford University (KAW 2014.0412). JJ was funded by the Autoimmunity Centres of Excellence (ACE, UM1AI144292). The ACE is a research network supported by the National Institute of Allergy and Infectious Diseases. KMS was funded by National Institute of Allergy and Infectious Diseases N01-AI-05419 and HHSN272201100025C. LK-E and AP were funded by National Institute of Allergy and Infectious Disease N01-AI-25481, HHSN272200900057C, and 1UM2AI117870. JJ was also supported by an Institutional Development Award (IDeA) from the National Institute of General Medical Sciences under award number U54GM104938, and from the National Institute of Arthritis and Musculoskeletal and Skin Diseases under award number P30AR073750. PJu was funded by the Autoimmunity Centres of Excellence grant U19-AI110491, and R01 AI125197-01; the Donald E. and Delia B. Baxter Foundation; and the Henry Gustav Floren Trust. LC receives funding from the Scleroderma Research Foundation. PK is funded in part by the Bill and Melinda Gates Foundation (OPP1113682); the National Institute of Allergy and Infectious Diseases grants 1U19AI167903-01, 5U01AI165527-02, 1U19AI109662, U19AI057229, and 5R01AI125197; National Institutes of Health contract 75N93022C00052; Department of Defence contracts W81XWH-18-1-0253 and W81XWH1910235.

Disclaimer The content of this publication is solely the responsibility of the authors and does not necessarily represent the official views of the National Institutes of Health.

Competing interests LC serves on the advisory board or received consulting fees from Mitsubishi Tanabe, Janssen, Genentech, Kyverna, and Eicos Sciences.

Patient and public involvement Patients and/or the public were not involved in the design, or conduct, or reporting, or dissemination plans of this research.

Patient consent for publication Consent obtained directly from patient(s).

Ethics approval This study involves human participants but all human samples analysed in this study were completely deidentified. Participants gave informed consent to participate in the study before taking part.

Provenance and peer review Not commissioned; externally peer reviewed.

Data availability statement Data are available on reasonable request. On publication of this study in a peer-reviewed journal, deidentified array data will be uploaded to the Gene Expression Omnibus (GEO) database.

Supplemental material This content has been supplied by the author(s). It has not been vetted by BMJ Publishing Group Limited (BMJ) and may not have been peer-reviewed. Any opinions or recommendations discussed are solely those of the author(s) and are not endorsed by BMJ. BMJ disclaims all liability and responsibility arising from any reliance placed on the content. Where the content includes any translated material, BMJ does not warrant the accuracy and reliability of the translations (including but not limited to local regulations, clinical guidelines, terminology, drug names and drug dosages), and is not responsible for any error and/or omissions arising from translation and adaptation or otherwise.

Open access This is an open access article distributed in accordance with the Creative Commons Attribution Non Commercial (CC BY-NC 4.0) license, which permits others to distribute, remix, adapt, build upon this work non-commercially, and license their derivative works on different terms, provided the original work is

properly cited, appropriate credit is given, any changes made indicated, and the use is non-commercial. See: <http://creativecommons.org/licenses/by-nc/4.0/>.

ORCID iDs

Burcu Ayoglu <http://orcid.org/0000-0001-7843-2960>

Judith James <http://orcid.org/0000-0002-9574-7355>

Keith M Sullivan <http://orcid.org/0000-0002-1379-9216>

Rong Mao <http://orcid.org/0000-0002-1236-0252>

Purvesh Khatri <http://orcid.org/0000-0002-4143-4708>

REFERENCES

- Mayes MD, Lacey JV, Beebe-Dimmer J, *et al*. Prevalence, incidence, survival, and disease characteristics of systemic sclerosis in a large US population. *Arthritis Rheum* 2003;48:2246–55.
- Elhai M, Meune C, Avouac J, *et al*. Trends in mortality in patients with systemic sclerosis over 40 years: a systematic review and meta-analysis of cohort studies. *Rheumatology* 2012;51:1017–26.
- van den Hoogen F, Khanna D, Fransen J, *et al*. 2013 classification criteria for systemic sclerosis: an American College of Rheumatology/European League against rheumatism collaborative initiative. *Arthritis Rheum* 2013;65:2737–47.
- Mehra S, Walker J, Patterson K, *et al*. Autoantibodies in systemic sclerosis. *Autoimmun Rev* 2013;12:340–54.
- Chung L, Utz PJ. Antibodies in scleroderma: direct pathogenicity and phenotypic associations. *Curr Rheumatol Rep* 2004;6:156–63.
- Bosello S, Angelucci C, Lama G, *et al*. Characterization of inflammatory cell infiltrate of scleroderma skin: B cells and skin score progression. *Arthritis Res Ther* 2018;20:75.
- O'Reilly S, Hügler T, van Laar JM. T cells in systemic sclerosis: a reappraisal. *Rheumatology* 2012;51:1540–9.
- Tiev KP, Abriol J, Burland MC, *et al*. T cell repertoire in patients with stable scleroderma. *Clin Exp Immunol* 2005;139:348–54.
- De Palma R, Del Galdo F, Lupoli S, *et al*. Peripheral T lymphocytes from patients with early systemic sclerosis co-cultured with autologous fibroblasts undergo an oligoclonal expansion similar to that occurring in the skin. *Clin Exp Immunol* 2006;144:169–76.
- Kalogerou A, Gelou E, Mountantonakis S, *et al*. Early T cell activation in the skin from patients with systemic sclerosis. *Ann Rheum Dis* 2005;64:1233–5.
- Distler O, Highland KB, Gahlemann M, *et al*. Nintedanib for systemic sclerosis-associated interstitial lung disease. *N Engl J Med* 2019;380:2518–28.
- Tashkin DP, Elashoff R, Clements PJ, *et al*. Cyclophosphamide versus placebo in scleroderma lung disease. *N Engl J Med* 2006;354:2655–66.
- Tashkin DP, Roth MD, Clements PJ, *et al*. Mycophenolate mofetil versus oral cyclophosphamide in scleroderma-related interstitial lung disease (SLS II): a randomised controlled, double-blind, parallel group trial. *Lancet Respir Med* 2016;4:708–19.
- Fernández-Codina A, Walker KM, Pope JE, *et al*. Treatment algorithms for systemic sclerosis according to experts. *Arthritis Rheumatol* 2018;70:1820–8.
- Sullivan KM, Goldmuntz EA, Keyes-Elstein L, *et al*. Myeloablative autologous stem-cell transplantation for severe scleroderma. *N Engl J Med* 2018;378:35–47.
- Assassi S, Wang X, Chen G, *et al*. Myeloablation followed by autologous stem cell transplantation normalises systemic sclerosis molecular signatures. *Ann Rheum Dis* 2019;78:1371–8.
- Franks JM, Martyanov V, Wang Y, *et al*. Machine learning predicts stem cell transplant response in severe scleroderma. *Ann Rheum Dis* 2020;79:1608–15.
- Bellocchi C, Ying J, Goldmuntz EA, *et al*. Large-Scale characterization of systemic sclerosis serum protein profile: comparison to peripheral blood cell transcriptome and correlations with skin/lung fibrosis. *Arthritis Rheumatol* 2021;73:660–70.
- Tusher VG, Tibshirani R, Chu G. Significance analysis of microarrays applied to the ionizing radiation response. *Proc Natl Acad Sci U S A* 2001;98:5116–21.
- Jog NR, James JA. Biomarkers in connective tissue diseases. *J Allergy Clin Immunol* 2017;140:1473–83.
- Tang W, Harmon P, Gulley ML, *et al*. Viral response to chemotherapy in endemic Burkitt lymphoma. *Clin Cancer Res* 2010;16:2055–64.
- Bohgaki T, Atsumi T, Koike T. Multiple autoimmune diseases after autologous stem-cell transplantation. *N Engl J Med* 2007;357:2734–6.
- Alexander T, Schneider S, Hoyer B, *et al*. Development and resolution of secondary autoimmunity after autologous haematopoietic stem cell transplantation for systemic lupus erythematosus: competition of plasma cells for survival niches? *Ann Rheum Dis* 2013;72:1102–4.
- Loh Y, Oyama Y, Statkute L, *et al*. Development of a secondary autoimmune disorder after hematopoietic stem cell transplantation for autoimmune diseases: role of conditioning regimen used. *Blood* 2007;109:2643–2548.
- Adamska JZ, Zia A, Bloom MS, *et al*. Myeloablative autologous haematopoietic stem cell transplantation resets the B cell repertoire to a more naïve state in patients with systemic sclerosis. *Annals of the Rheumatic Diseases* 2022;annrheumdis-2021-221925
- Browne SK. Anticytokine antibody-associated immunodeficiency. *Annu Rev Immunol* 2014;32:635–57.

- 27 Bastard P, Rosen LB, Zhang Q, *et al.* Autoantibodies against type I IFNs in patients with life-threatening COVID-19. *Science* 2020;370.
- 28 Wang EY, Mao T, Klein J, *et al.* Diverse functional autoantibodies in patients with COVID-19. *Nature* 2021;595:283–8.
- 29 Chang SE, Feng A, Meng W, *et al.* New-Onset IgG autoantibodies in hospitalized patients with COVID-19. *Nat Commun* 2021;12:5417.
- 30 Feng AYE, Moore AR, Dhingra S. Autoantibodies targeting cytokines and connective tissue disease autoantigens are common in acute non-SARS-CoV-2 infections. | research square. *medRxiv* 2022.
- 31 Takemura H, Suzuki H, Yoshizaki K, *et al.* Anti-Interleukin-6 autoantibodies in rheumatic diseases. increased frequency in the sera of patients with systemic sclerosis. *Arthritis Rheum* 1992;35:940–3.
- 32 Cappellano G, Orilieri E, Woldetsadik AD, *et al.* Anti-Cytokine autoantibodies in autoimmune diseases. *Am J Clin Exp Immunol* 2012;1:136–46.
- 33 Gupta S, Nakabo S, Chu J, *et al.* Association between anti-interferon-alpha autoantibodies and COVID-19 in systemic lupus erythematosus. *medRxiv* 2020. doi:10.1101/2020.10.29.20222000. [Epub ahead of print: 03 Nov 2020].
- 34 Overbeek MJ, Boonstra A, Voskuyl AE, *et al.* Platelet-Derived growth factor receptor- β and epidermal growth factor receptor in pulmonary vasculature of systemic sclerosis-associated pulmonary arterial hypertension versus idiopathic pulmonary arterial hypertension and pulmonary veno-occlusive disease: a case-control study. *Arthritis Res Ther* 2011;13:R61.
- 35 Kawamoto T, Nishi M, Takahashi K, *et al.* Stimulation by transforming growth factor-beta of epidermal growth factor-dependent growth of aged human fibro-blasts: recovery of high affinity EGF receptors and growth stimulation by EGF. *In Vitro Cell Dev Biol* 1989;25:965–70.
- 36 Tokiyama K, Yokota E, Niho Y. Epidermal growth factor receptor of fibroblasts from patients with scleroderma. *J Rheumatol* 1990;17:1463–8.
- 37 Dahal BK, Cornitescu T, Tretyn A, *et al.* Role of epidermal growth factor inhibition in experimental pulmonary hypertension. *Am J Respir Crit Care Med* 2010;181:158–67.
- 38 Merklinger SL, Jones PL, Martinez EC, *et al.* Epidermal growth factor receptor blockade mediates smooth muscle cell apoptosis and improves survival in rats with pulmonary hypertension. *Circulation* 2005;112:423–31.
- 39 Lofgren S, Hinchcliff M, Carns M, *et al.* Integrated, multicohort analysis of systemic sclerosis identifies robust transcriptional signature of disease severity. *JCI Insight* 2016;1:e89073.
- 40 Planque S, Zhou Y-X, Nishiyama Y, *et al.* Autoantibodies to the epidermal growth factor receptor in systemic sclerosis, lupus, and autoimmune mice. *Faseb J* 2003;17:136–43.
- 41 Bandinelli F, Del Rosso A, Gabrielli A, *et al.* Ccl2, CCL3 and CCL5 chemokines in systemic sclerosis: the correlation with SSC clinical features and the effect of prostaglandin E1 treatment. *Clin Exp Rheumatol* 2012;30:S44–9.
- 42 Hasegawa M, Sato S, Takehara K. Augmented production of chemokines (monocyte chemoattractant protein-1 (MCP-1), macrophage inflammatory protein-1alpha (MIP-1alpha) and MIP-1beta) in patients with systemic sclerosis: MCP-1 and MIP-1alpha may be involved in the development of pulmonary fibrosis. *Clin Exp Immunol* 1999;117:159–65.
- 43 Distler JHW, Akhmetshina A, Schett G, *et al.* Monocyte chemoattractant proteins in the pathogenesis of systemic sclerosis. *Rheumatology* 2009;48:98–103.
- 44 Sato S. Abnormalities of adhesion molecules and chemokines in scleroderma. *Curr Opin Rheumatol* 1999;11:503–7.
- 45 Zhang Y, McCormick LL, Desai SR, *et al.* Murine sclerodermatous graft-versus-host disease, a model for human scleroderma: cutaneous cytokines, chemokines, and immune cell activation. *J Immunol* 2002;168:3088–98.
- 46 Solanki KK, Al-Majmoei M, White DHN. High prevalence of antithyroid antibodies in a new Zealand cohort of patients with systemic sclerosis. *J Clin Rheumatol* 2018;24:264–71.
- 47 Danielides S, Mavragani CP, Katsakoulas I, *et al.* Increased prevalence of anti-thyroid antibodies in patients with limited scleroderma. *Scand J Rheumatol* 2011;40:299–303.
- 48 Consult@ A. Systemic Sclerosis - Scleroderma, 2022. Available: <https://arupconsult.com/content/systemic-sclerosis>
- 49 Rosenberg JM, Price JV, Barcenas-Morales G, *et al.* Protein microarrays identify disease-specific anti-cytokine autoantibody profiles in the landscape of immunodeficiency. *J Allergy Clin Immunol* 2016;137:204–13.
- 50 Su Y, Yuan D, Chen DG, *et al.* Multiple early factors anticipate post-acute COVID-19 sequelae. *Cell* 2022;185:881–95.

SUPPLEMENTARY METHODS

Bead-based antigen arrays

We generated a custom, 280-plex, bead-based antigen array designed specifically for the study of connective tissue diseases such as SSc, and modelled based on similar arrays previously used to study murine SLE repertoires¹ and cloned human monoclonal antibodies derived from patients with autoimmune polyendocrinopathy-candidiasis-ectodermal dystrophy (APECED)². A total of 221 commercial protein antigens were used to construct the array and included: 109 unique proteins known to be associated with connective tissue diseases (*e.g.* standard SSc antigens such as Scl-70, centromere proteins, and RNA polymerases); a large panel of 80 secreted proteins including cytokines, chemokines, growth factors, acute phase proteins and extra-cellular matrix proteins; five viral proteins commonly used to measure antibodies to pathogens, such as Epstein Barr Nuclear Antigen-1 (EBNA-1), and vaccine constituents such as Hepatitis B Surface Antigen (HBsAg); and an additional set of 27 proteins selected based on previous studies (11 enzymes; seven nuclear proteins; and nine cell surface receptors)²⁻⁷ (**Supplementary Table 9**). The remaining bead IDs were conjugated to 12 different human and anti-human antibody subtypes to create three-point dilution series, and were used as positive and negative control analytes for quality control.

All antigens were coupled to carboxylated magnetic beads (MagPlex-C, Luminex Corp.) such that each antigen was linked to beads with unique barcodes, as previously described^{1, 8}. Briefly, 6 µg of each antigen and a three-point dilution series of control human and anti-human antibodies (0.25, 1, and 4 µg) were diluted in phosphate buffered saline (PBS) and transferred to 96-well plates. Diluted antigens and control antibodies were conjugated to 1×10⁶ carboxylated magnetic beads per ID. Beads were distributed into 96-well plates (Greiner BioOne), washed and re-suspended in phosphate buffer (0.1M NaH₂PO₄, pH 6.2) using a 96-well plate washer (Biotek).

The bead surface was activated by adding 100 μ l of phosphate buffer containing 0.5 mg 1-ethyl-3-(3-dimethylamino-propyl)carbodiimide (Pierce) and 0.5 mg N-hydroxysuccinimide (Pierce). After 20 min incubation on a shaker, beads were washed and resuspended in activation buffer (0.05M 2-N-Morpholino EthaneSulfonic acid, MES, pH 5.0). Diluted antigens and control antibodies were incubated with beads for 2 h at room temperature. Beads were washed 3 \times in 100 μ l PBS-Tween, re-suspended in 60 μ l storage buffer (Blocking reagent for ELISA, Roche), and stored in plates at 4°C overnight.

Immobilization of antigens and control antibodies on the correct bead IDs was confirmed by analysis of the following commercially-available mouse monoclonal antibodies: anti-La/SSB and anti-Ro52 (Santa Cruz); anti-His6 tag (Invitrogen); anti-Scl-70 (ImmunoVision); anti-IL-1 β , anti-IL-2, anti-IL-4, anti-IL-5, anti-IL-6, anti-IL-10, anti-IL-13, anti-IL17-A, anti-CCL2, anti-IFN β and anti-IFN γ (eBiosciences); anti-GM-CSF (Biolegend), and a rabbit polyclonal anti-Histone H2b antibody (Abcam). All antibodies were analyzed at a concentration of 1 μ g/ml. In addition, dilution series of various prototype human plasma samples derived from participants with autoimmune diseases with known reactivity patterns (*e.g.* ds-DNA, Scl-70, centromere, SSA, SSB, cardiolipin, whole histones, and RNP (ImmunoVision), as well as normal human sera (ImmunoVision), were used to test two different dilution buffers (0.05% PBS-Tween supplemented only either with 3% (w/v) bovine serum albumen (BSA, Sigma) or with 3% (w/v) BSA and 5% (w/v) blotting-grade non-fat dry milk (Bio-Rad)). Each dilution buffer was then tested using three different concentrations (1:75, 1:150, and 1:300) for serum samples.

Assay protocols that used the optimized serum dilution and buffer conditions described above were then applied to studying samples from the SCOT trial⁸. A total of 212 samples (n=192 SCOT samples who completed the treatment, n=63 subjects); and 20 HC were diluted 1:125 in

0.05% PBS-Tween supplemented with 3% (w/v) BSA and transferred into 3×96-well plates in a randomized layout. Across these 3×96-well plates, 14 well positions were randomly assigned as serum-free negative control wells, and 13 well positions were randomly assigned as serum pools. The bead array was distributed into a 384-well plate (Greiner BioOne) by transfer of 5 µl bead array per well. Using a liquid handler, we then transferred 45 µl of the 1:125 diluted sera into the 384-well plate containing the bead array. Samples were incubated for 90 min on a shaker at room temperature. Beads were washed with 3 × 60 µl PBS-Tween on a plate washer (EL406, Biotek) and 50 µl of 1:500 diluted R-phycoerythrin (R-PE) conjugated Fcγ-specific goat anti-human IgG F(ab')₂ fragment (Jackson ImmunoResearch) was added to the 384-well plate for detection of bound human IgG. After incubation with the secondary antibody for 45 min, the plate was washed with 3 × 60 µl PBS-Tween and re-suspended in 60 µl PBS-Tween prior to analysis using a FlexMap3D instrument (Luminex Corp.). A minimum of 100 events per bead ID were counted. Binding events were displayed as median fluorescence intensity (MFI).

Initial array construction and validation

To optimize and establish the bead-based methodology to specifically study human SSc samples, we first generated an array with limited content composed of 43 unique antigens including 16 cytokines and chemokines and 27 traditional autoantigens including Ro52 and Scl-70. Six human and anti-human antibodies served as control analytes. This array was used to (i) optimize antigen-bead conjugation conditions; (ii) identify optimal buffer composition and dilution; (iii) determine serum sample concentrations; (iv) optimize conditions for secondary detection reagents; and (v) ensure that all reagents and instruments were functional prior to performing the assay on the SCOT samples.

A majority of the 43 antigens and all control human and anti-human antibodies were conjugated as a three-point dilution series, while two different antigen dilution buffers (1×PBS or 0.05M MES) were also compared. The array was first characterized and validated using 16 commercial antibodies specific for individual cytokines and chemokines (anti-Scl-70, anti-IL-17A, anti-Ro52/SSA, anti-La/SSB, anti-IL-6, anti-IL-2, anti-IL-5, anti-IL-4, anti-IL-10, anti-CCL2, anti-GM-CSF, anti-IL-13, anti-IL-1 β , anti-IFN γ , anti-TNF α and anti-histone H2b). **Supplementary Figure 3A** shows a heat map depicting reactivities to these different commercial antibodies. Each antibody was specific for its target antigen and displayed low or negligible levels of cross-reactivity to unrelated targets, with the exception of cross-reactivity between anti-SSB and histone H2b (**Supplementary Figure 3A**, first column on the left) and anti-H2b and GM-CSF (**Supplementary Figure 3A**, sixth column from the left). Low level fluorescence was observed for IL-2 (eleventh row from top, **Supplementary Figure 3A**) and to a lesser extent histone H2b and GM-CSF, even when using only assay buffer (first column on the left, **Supplementary Figure 3A**). Taken together, these results confirm that all of the tested antigens were successfully conjugated to beads and retained conformational epitopes, and further demonstrate highly-specific binding of monoclonal and polyclonal antibodies to their cognate antigen targets.

We next analyzed well-characterized prototypical human sera from six individuals with SSc (three with diffuse cutaneous SSc who were Scl-70 positive, and three with limited cutaneous SSc who were centromere positive), obtained from the Stanford Systemic Sclerosis Biorepository. In addition, a total of nine commercially-available human autoantibody-negative control sera, and sera with known reactivities to SSA, SSB, Jo-1, U1-small nuclear ribonucleoprotein complex (U1-snRNP), whole histone, Sm (Smith), and single-stranded (ss)-DNA were utilized for validation. As shown in **Supplementary Figure 1B**, binding profiles of the six SSc patient sera and nine

commercially-available human prototype sera revealed reactivity against the expected corresponding autoantigens, as well as additional antigens contained within the array. For example, anti-centromere positive serum samples derived from SSc patients with the limited cutaneous form of SSc recognized both centromere proteins (CENP-A and CENP-B), and several EBV-specific antigens (EBNA-1 and EBV p-18). Two samples (Patients #2 and #3) also recognized the Ro-52 autoantigen but not the structurally-related Ro-60 protein (top panel, **Supplementary Figure 3B**). Anti-Scl-70 positive serum samples derived from patients with the diffuse cutaneous form of SSc exhibited broader reactivity, including all four EBV antigens (EBNA-1, EBV p-18, EBV EA and EBV EA-D), thyroperoxidase (TPO), Ro-52, and components of the U1-snRNP such as U1-A, U1-C, and U1-70 (middle panel, **Supplementary Figure 3B**). Excellent concordance was observed when comparing reactivity against bovine Ro60/SSA and human recombinant Ro60/SSA from a different vendor (columns 6 and 7, **Supplementary Figure 3B**). Similar results were obtained for the commercially-available prototype sera, with the broadest reactivity observed for the histone positive serum sample (bottom panel, **Figure 1B**). Although not a goal of our initial studies, we also demonstrated that bead-based arrays are useful for epitope mapping, as Scl-70 positive patient #3 had high-titer antibodies that recognized full length topoisomerase I, but not a truncated version lacking the first 190 amino acids (middle panel, compare columns 3 and 4, **Figure 1B**). We conclude from these pilot experiments that the bead-based approach provides results that are comparable to those obtained using planar arrays³, but with far greater sample throughput, multiplexing capacity, and flexibility.

Construction of a high content SSc array for autoantigen discovery

Following technical validation of the “limited content” array and optimization of assay conditions described above, a “full-content” 280-plex array was designed and generated (***Supplementary Table 9***). Different classes of antigens were included in the array design: “Standard SSc antigens” such as Scl-70, CENP-B, Th/To, and RNA polymerases I/III⁹ were included to determine whether the newly-reconstituted repertoire retained the original reactivities, or alternatively adopted entirely new autoantibody profiles following engraftment. Patients with SSc often evolve naturally over time to develop additional connective tissue diseases such as SLE, myositis, and Sjögren’s Disease, and other autoimmune manifestations such as autoimmune thyroiditis. We thus constructed a subpanel of “Traditional Autoantigens” such as Ro, La, Smith proteins, RNP proteins, thyroperoxidase (TPO), and thyroglobulin (TG). In addition to the 109 unique proteins previously identified as autoantigens in connective tissue diseases, the array also included a “Discovery Antigen Panel” comprised of 107 unique antigens to determine whether autoantibodies against secreted proteins or cell surface receptors might exist in serum derived from diffuse SSc patients, mirroring our findings and those of other investigators in autoimmune diseases such as SLE^{3 10-12} and a growing number of immunodeficiency disorders^{4 5 7 13}. Among these 107 unique antigens, 80 were secreted proteins including cytokines, chemokines, growth factors, acute phase proteins, and extracellular matrix proteins. The remaining 27 antigens included enzymes, nuclear proteins, and cell surface receptors. To explore whether protective antibodies directed against viral antigens or other pathogens changed over time, we also included four antigens derived from EBV as well as HBSAg. Finally, dilution series of a number of control human and anti-human antibodies was included that served as internal assay controls.

Serum samples

Serum samples from SSc participants were collected at specific time points throughout the duration of the SCOT trial, with ethical approval for the trial described in our previous publication¹⁴. A total of 192 serum samples from the SCOT trial were provided to Stanford University by the clinical drug development & contract research service Rho (<http://www.rhoworld.com/>) as barcoded samples with no identifiers. In addition, 20 specimens from healthy controls with age and sex distributions similar to the SCOT participants, to which we were also blinded to identity, were analyzed. All samples were randomly distributed throughout the wells in the assay plates and analyzed in parallel. To establish the bead-based autoantibody assay, prototype serum samples derived from patients with diffuse and limited SSc were obtained through the Stanford Systemic Sclerosis Biorepository (Stanford IRB #12047). To eliminate batch effects, all samples were analyzed in the same assay run, using the same instrument, randomly distributed across assay plates.

Data analysis and statistics

All data analysis and statistics were performed using R and various R packages¹⁵. Data were log₂ transformed. For normalization, mean MFI values for “bare bead” IDs were subtracted from MFI values for antigen conjugated bead IDs. To identify statistically-significant differences in array reactivity in various group comparisons (*see Figure 1C*), we applied the SAM algorithm to log₂ transformed, normalized MFI values. We determined reactivity to be significantly correlated within each analysis (*e.g.* SSc vs Control, or SCT vs HSCT) when the SAM-reported log of fold

change (logFC) was greater than 0.6, using a False Discovery Rate of <20% ($q < 0.2$), unless otherwise specified. For completeness, all statistical analyses were also performed using non-normalized (raw) data in which MFI values for “bare bead” IDs were not subtracted yielding similar results (data not shown).

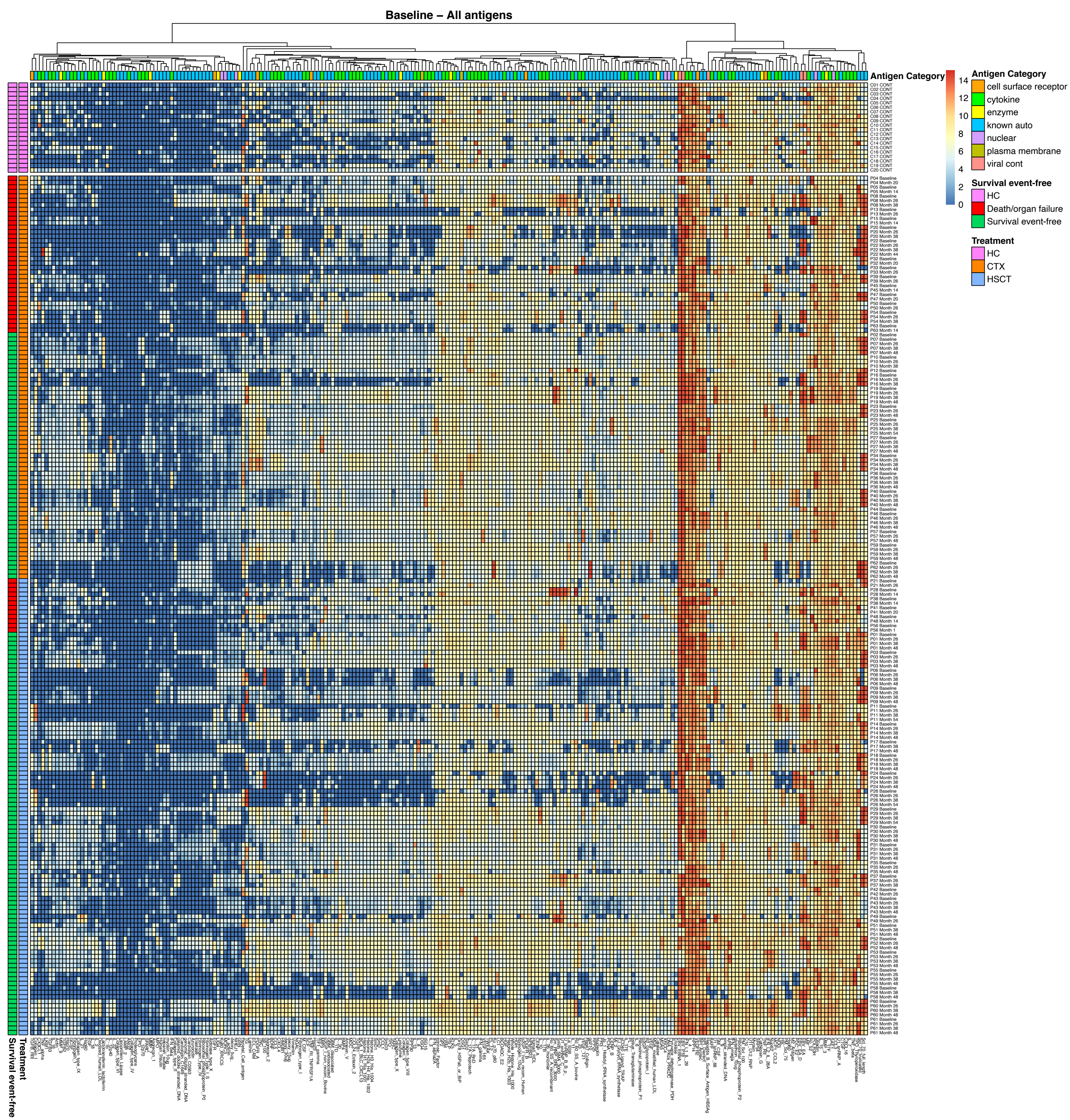
Linear mixed models analysis was used to identify autoantibodies in which serum levels exhibited significantly different trends over time between the two treatment arms, and for clinical response status (with response defined as survival event-free at month 54). In each model, we included the random effect due to individual subject differences. The analysis was performed using the R package *lmer*. Autoantibodies were considered to have significantly different trends if the appropriate coefficient for the model had an FDR-corrected p-value <0.2. Correction was performed with the Benjamini-Hochberg method for correction for multiple comparisons.

Subject-specific antigen trends were obtained by fitting a standard linear model to each patient-antigen intensity profile. We then built a distribution of the slopes of the regression lines by ordering them based on their magnitudes. From the assembled distribution, we selected patient-antigen pairs with slopes that had >2 standard deviations from the distribution mean.

References:

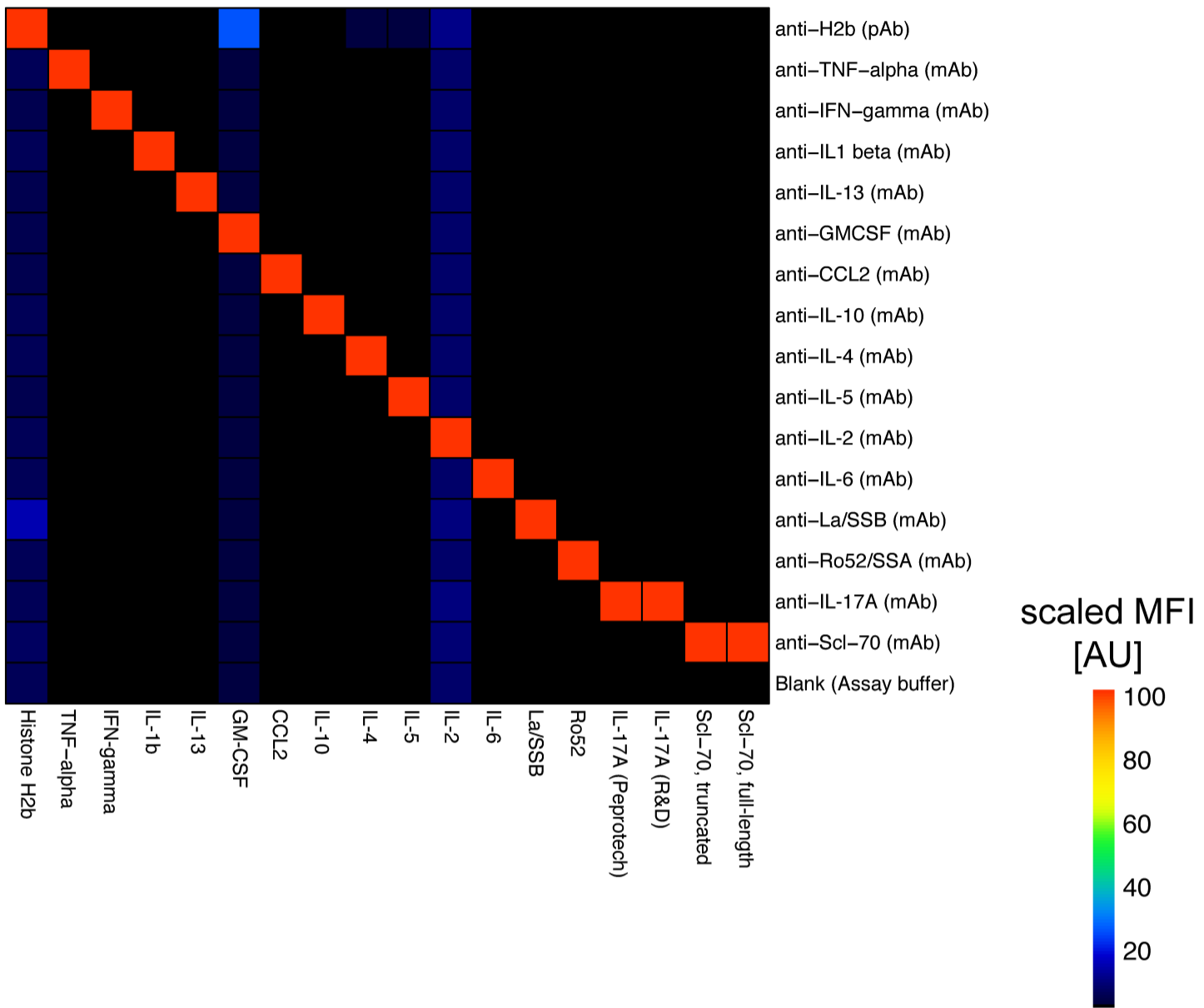
1. Degn SE, van der Poel CE, Firl DJ, et al. Clonal Evolution of Autoreactive Germinal Centers. *Cell* 2017;170(5):913-26.e19. doi: 10.1016/j.cell.2017.07.026
2. Sng J, Ayoglu B, Chen JW, et al. AIRE expression controls the peripheral selection of autoreactive B cells. *Sci Immunol* 2019;4(34) doi: 10.1126/sciimmunol.aav6778
3. Price JV, Haddon DJ, Kemmer D, et al. Protein microarray analysis reveals BAFF-binding autoantibodies in systemic lupus erythematosus. *J Clin Invest* 2013;123(12):5135-45. doi: 10.1172/JCI70231 [published Online First: 2013/11/26]
4. Walter JE, Rosen LB, Csomos K, et al. Broad-spectrum antibodies against self-antigens and cytokines in RAG deficiency. *J Clin Invest* 2015;125(11):4135-48. doi: 10.1172/JCI80477 [published Online First: 2015/10/13]
5. Rosenberg JM, Price JV, Barcenas-Morales G, et al. Protein microarrays identify disease-specific anti-cytokine autoantibody profiles in the landscape of immunodeficiency. *J Allergy Clin Immunol* 2016;137(1):204-13 e3. doi: 10.1016/j.jaci.2015.07.032 [published Online First: 2015/09/15]
6. Perkins T, Rosenberg JM, Le Coz C, et al. Smith-Magenis Syndrome Patients Often Display Antibody Deficiency but Not Other Immune Pathologies. *J Allergy Clin Immunol Pract* 2017;5(5):1344-50 e3. doi: 10.1016/j.jaip.2017.01.028
7. Rosenberg JM, Maccari ME, Barzagli F, et al. Neutralizing Anti-Cytokine Autoantibodies Against Interferon-alpha in Immunodysregulation Polyendocrinopathy Enteropathy X-Linked. *Front Immunol* 2018;9:544. doi: 10.3389/fimmu.2018.00544 [published Online First: 2018/04/14]
8. Ayoglu B, Mitsios N, Kockum I, et al. Anoctamin 2 identified as an autoimmune target in multiple sclerosis. *Proceedings of the National Academy of Sciences* 2016;113(8):2188-93.
9. Ho KT, Reveille JD. The clinical relevance of autoantibodies in scleroderma. *Arthritis Res Ther* 2003;5(2):80-93. [published Online First: 2003/04/30]
10. Vincent T, Plawecki M, Goulabchand R, et al. Emerging clinical phenotypes associated with anti-cytokine autoantibodies. *Autoimmun Rev* 2015;14(6):528-35. doi: 10.1016/j.autrev.2015.01.015 [published Online First: 2015/01/31]
11. Cappellano G, Orilieri E, Woldetsadik AD, et al. Anti-cytokine autoantibodies in autoimmune diseases. *Am J Clin Exp Immunol* 2012;1(2):136-46. [published Online First: 2012/01/01]
12. Gupta S, Tatouli IP, Rosen LB, et al. Distinct Functions of Autoantibodies Against Interferon in Systemic Lupus Erythematosus: A Comprehensive Analysis of Anticytokine Autoantibodies in Common Rheumatic Diseases. *Arthritis Rheumatol* 2016;68(7):1677-87. doi: 10.1002/art.39607 [published Online First: 2016/01/28]
13. Meyer S, Woodward M, Hertel C, et al. AIRE-Deficient Patients Harbor Unique High-Affinity Disease-Ameliorating Autoantibodies. *Cell* 2016;166(3):582-95. doi: 10.1016/j.cell.2016.06.024 [published Online First: 2016/07/19]
14. Sullivan KM, Goldmuntz EA, Keyes-Elstein L, et al. Myeloablative Autologous Stem-Cell Transplantation for Severe Scleroderma. *New England Journal of Medicine* 2018;378(1):35-47. doi: 10.1056/NEJMoa1703327
15. Team RC. R: A language and environment for statistical computing. R Foundation for Statistical Computing, Vienna, Austria. 2013



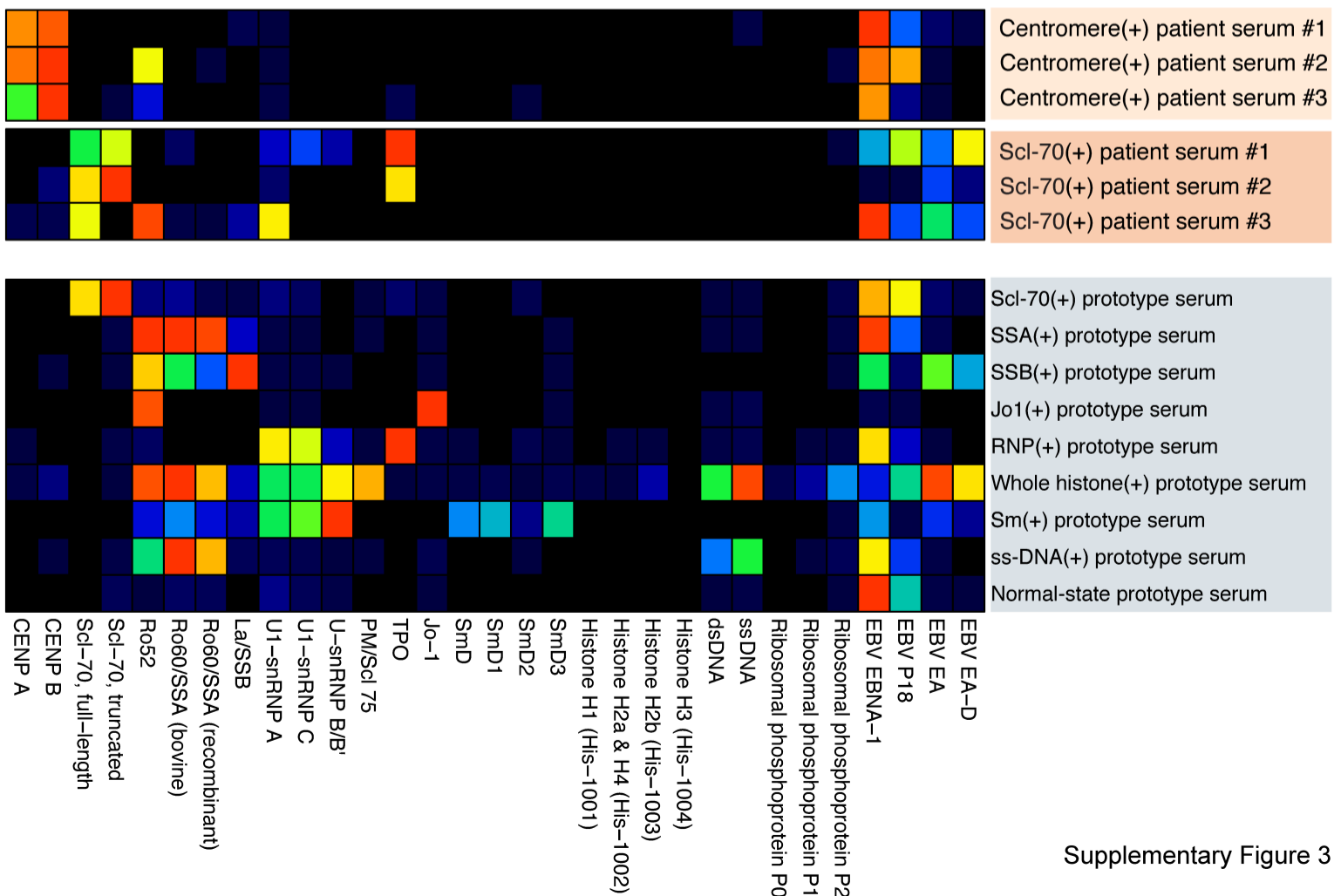


Supplementary Figure 2

A

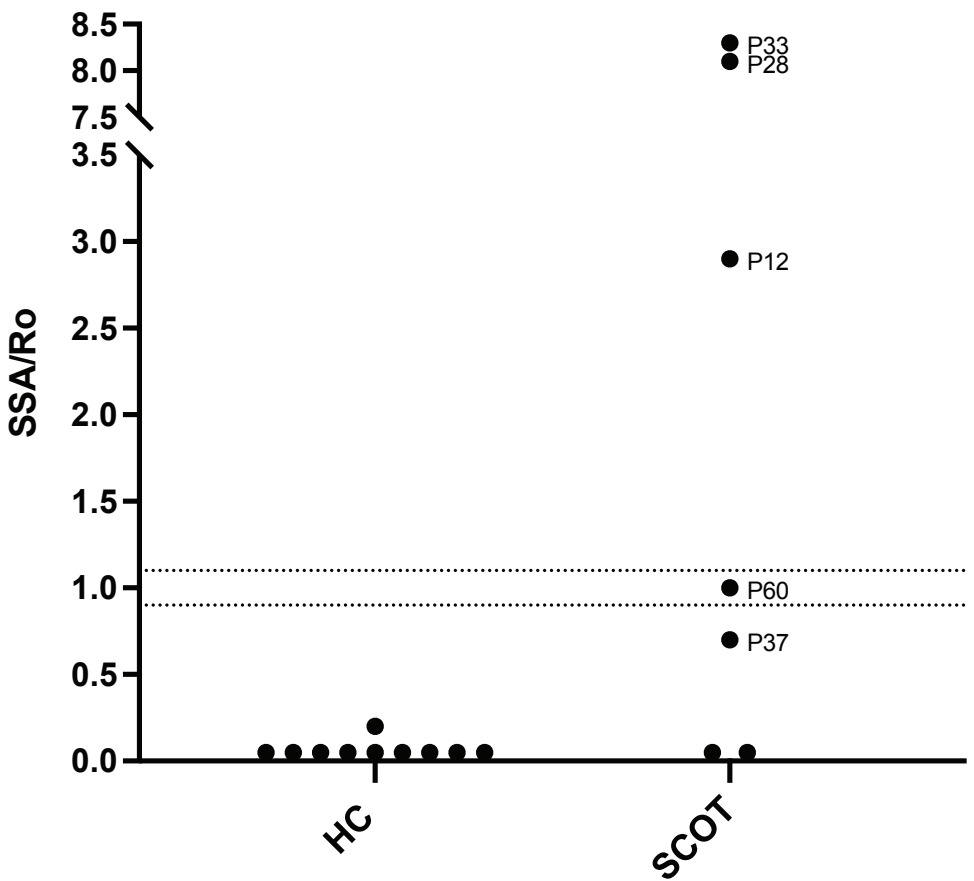


B



Supplementary Figure 3

Ro60



Luminex vs Bioplex for Ro60

