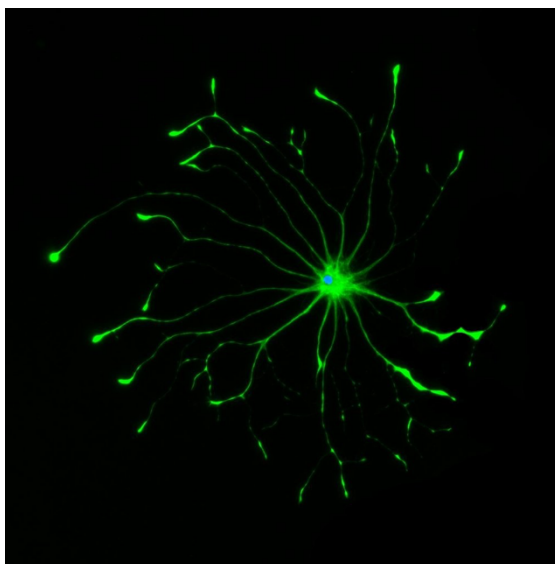


Immunology Program

SEMINAR SERIES

Shane Liddelow, PhD

Assistant Professor, Department of Neuroscience and Physiology
NYU Langone



What do reactive astrocytes (really) do?

Faculty Sponsor: Katrin Andreasson, MD

Tuesday, Sept. 24, 2019
4:30 – 5:30 pm

L K S C
LK130