

Charter for *Stanford Immunology*

Preamble

Stanford has been one of the leading institutions in the world in basic and clinical immunology since the 1960's. Because of the relevance of immunology to many areas of the basic and clinical sciences, faculty engaged in research and training in immunology have been appointed in most of the departments in the School of Medicine, as well as in the Department of Biology. Despite the many departmental affiliations of the participating faculty, immunology at Stanford has been very successful. The quality of immunology faculty appointments has consistently been very high, the faculty have developed outstanding research programs, and the culture among the immunology faculty and their lab groups traditionally has been one of interaction, cooperation, and collaboration. These interactions, including the long-standing weekly immunology seminar series and the annual retreat (scientific conference), usually at Asilomar, have been important contributors to the development of the Stanford Immunology community.

An important area of interdepartmental cooperation among Stanford's immunology faculty has been in training future generations of immunologists. In 1985 the Molecular and Cellular Immunobiology Training Grant was awarded by the NIH for postdoctoral training. Interdepartmental training was extended to graduate students with the initiation of the PhD Program in Immunology in 1989, supported by the same training grant, which has continuously funded both graduate students and postdocs since then. Immunology faculty from a wide variety of departments have organized and taught in a growing slate of immunology courses, including introductory immunology for undergraduate and graduate students, the medical students' immunology course, several advanced immunology courses, and courses on more focused areas of immunology. Since the early 2000's medical students have been required to have a scholarly concentration, and immunology has been one of the application fields in which they can specialize. These interdepartmental teaching and training activities have been well-integrated components of and contributors to the immunology community at Stanford.

With steady growth in the number of immunologists and the initiation of the training grant and the PhD Program, the immunology faculty felt it important to form an umbrella structure to oversee the pre- and postdoctoral programs, coursework for graduate and medical students, the seminars, the retreat, and other activities. The Charter for the Program in Immunology, developed around 2000 and approved by School of Medicine Dean Philip Pizzo in 2002, specified that this structure should be led by an Executive Committee, chaired by a director (who traditionally has also been the principal investigator of the Molecular and Cellular Immunobiology training grant). The membership of the Executive Committee was originally comprised of the chairs of the committees in charge of the PhD Program, the Center for Clinical Immunology at Stanford, and the Committee on Courses, plus several members at large; in recent years the Executive Committee has evolved to include former chairs of the Executive Committee and the PhD Program and the chairs of other committees overseeing various immunology activities. The name for the umbrella structure encompassing all immunology activities has changed over the years from "Multidisciplinary Program in Immunology" to "Program in Immunology," and in winter, 2011 to "Stanford Immunology" (the name "Program in Immunology" for the umbrella structure was often confused with the PhD Program in Immunology). The first director was Irving Weissman (Pathology/Developmental Biology), followed by Hugh McDevitt (Microbiology and Immunology/Medicine), Larry Steinman (Neurology), Pat Jones (Biology) and Olivia Martinez (Surgery, as of July 2018).

In 2010 the School of Medicine decided to move the administrative homes of its interdepartmental PhD Programs to the Stanford Institutes of Medicine, research-oriented institutes formed in 2004. The rationale for the moves was that the graduate IDPs would realize a variety of benefits - administrative, scientific, and financial - from the greater ties with the relevant research institute. With the concurrence of Mark Davis, Director of the Institute for Immunity, Transplantation, and Infection (ITI) and the Immunology Executive Committee, it was decided that *Stanford Immunology* (referring to the umbrella structure overseeing all Immunology training-related activities) and all of its activities would be housed under ITI, which fosters research aimed at translating discoveries in basic immune mechanisms into clinical applications that will improve human health. *Stanford Immunology's* move to ITI became official on January 1, 2011. With this move and other changes in the nature, organization, and oversight of immunology activities, the previous Charter for the Program in Immunology Charter was no longer appropriate and was

replaced in 2012 by this Charter for *Stanford Immunology*. It was revised in September, 2013, primarily to reflect the development of the Computational and Systems Immunology track in the PhD Program.

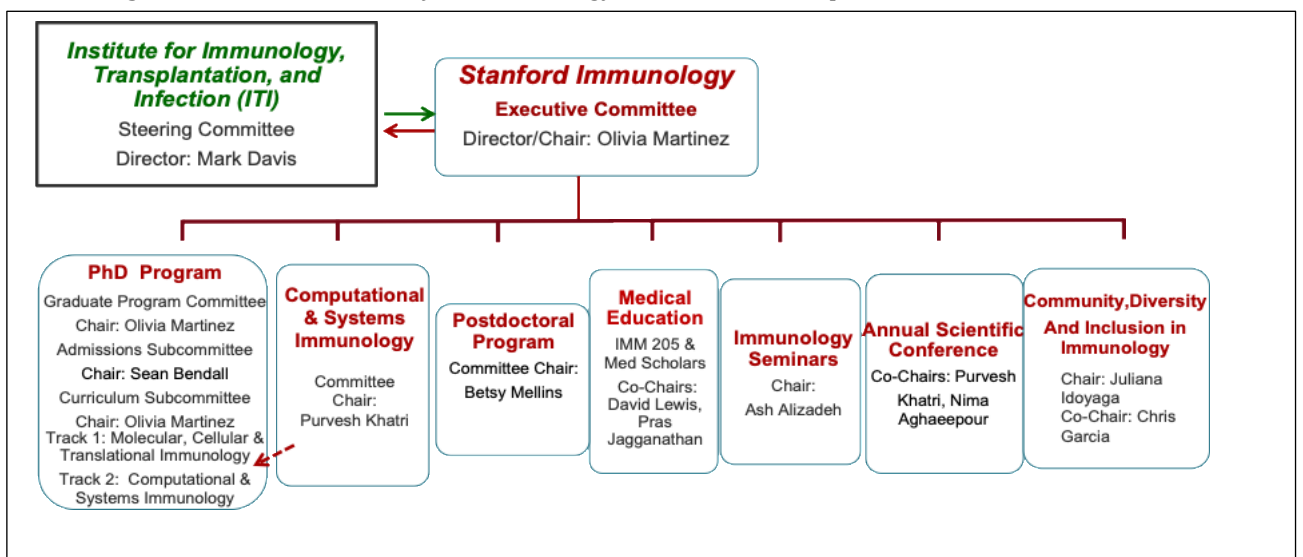
I. THE PURVIEW AND RESPONSIBILITIES OF *STANFORD IMMUNOLOGY*

Stanford Immunology is an umbrella structure that encompasses and has responsibility (through its various committees) for sustaining vigorous graduate and postdoctoral training programs, immunology courses, the weekly Immunology Seminar Series, and the annual Immunology Scientific Conference (retreat). Also included in the purview of *Stanford Immunology* is responsibility for the medical students' immunology course (currently IMM 205) and for the Immunology application within the medical students' required scholarly concentrations. Under the previous charter the director of the Center for Clinical Immunology at Stanford (CCIS) and its steering committee (a standing committee of the Program in Immunology) had responsibility for contributing to the recruitment and support of new and junior clinical immunology faculty. However, CCIS has been folded into ITI, which has assumed some of these functions, for example through its seed grants. In summary, the purview of *Stanford Immunology* can best be described as responsibility for interdepartmental immunology training-related programs and activities.

II. GOVERNANCE

A. Committees

An organizational chart for *Stanford Immunology* and its relationship to ITI is shown below.



Stanford Immunology is governed by eight standing committees:

- Stanford Immunology Executive Committee
- Immunology Graduate Program Committee [formerly the Predoctoral Committee]
- Immunology Postdoctoral Program Committee
- Immunology Medical Education Committee [replaces the Curriculum Committee]
- Immunology Seminar Committee
- Immunology Retreat Committee
- Computational and Systems Immunology Committee
- “Diversity, Equity and Inclusion” (approved by the Executive Committee on July 14, 2020 and subsequently named Community, Diversity and Inclusion in Immunology (CDII))

The membership, responsibilities, and procedures of the Executive Committee will be described in section III, and those of the other standing committees will be described in section IV.

B. Director

The Director of *Stanford Immunology* is the Chair of the Executive Committee. The Director is appointed by and serves at the discretion of the Director of the Institute for Immunology, Transplantation, and Infection (ITI), in consultation with the Dean of the School of Medicine. The Director of *Stanford Immunology* sits on the Executive Committee of the School of Medicine (unless the Director is not a faculty member in the School in which case the Director of the PhD Program in Immunology shall sit on the School's Executive Committee). The Director is also a member of the ITI Steering Committee.

Overall the Director has responsibility for seeing that the various committees and their chairs are fulfilling their responsibilities appropriately, for overseeing *Stanford Immunology* budget and staff, and generally for seeing that *Stanford Immunology* programs and activities are running smoothly. Traditionally the Director serves as the principal investigator of the Molecular and Cellular Immunobiology training grant that supports graduate students and postdocs. As *ex officio* member of all standing committees, the Director is informed about and may attend and participate in the discussions of any of the committees, and has voting authority. The Director also represents *Stanford Immunology* in official dealings with other entities.

III. THE EXECUTIVE COMMITTEE

A. Membership

Stanford Immunology is governed by an Executive Committee made up of 8-9 voting members plus *ex officio* (non-voting) members:

- Director of *Stanford Immunology*, Chair
- Previous Director of *Stanford Immunology*
- Director of the Institute for Immunity, Transplantation, and Infection
- Chair, Graduate Program Committee
- Chair, Postdoctoral Committee
- Chair, Immunology Medical Education Committee
- Chair, Retreat Committee
- Chair, Seminar Committee
- Chair, Computational and Systems Immunology Committee
- Chair, Diversity, Equity and Inclusion Committee
- One *ad hoc* member (at the Chair's discretion)

Ex officio, non-voting members:

- Graduate student
- Basic science postdoctoral fellow
- Clinical postdoctoral fellow
- Program administrator

As mentioned above, the Director of *Stanford Immunology*/Chair of the Executive Committee is appointed by and serves at the discretion of the Director of ITI, in consultation with and with the approval of the Senior Associate Dean for Graduate and Postdoctoral Affairs of the School of Medicine. Chairs of the standing committees are selected by the Executive Committee for 3-year terms (renewable). The Executive Committee Chair may appoint one *ad hoc* member to provide important faculty representation (for example, to provide: particular experience or expertise; a member from the Microbiology and Immunology Department; appropriate basic/clinical balance; enhanced diversity, etc.). *Ad hoc* members are appointed for one year (renewable). All appointments can be terminated if moved, seconded, and approved by 2/3 of the Executive Committee or 2/3 of the membership at large.

Students and postdoctoral fellows will select their representatives through vote or ballot for a one-year term (renewable).

B. Meetings

The Executive Committee will meet quarterly and can be convened for special purposes by the Chair or at the request of two or more Executive Committee voting members. If committee chair members are unable to attend a meeting, they may designate another member of their committee to attend in their place, with voting privileges.

C. Voting

Most decisions require a simple majority of the Executive Committee voting members (all members except *ex officio* members), with several exceptions requiring a 2/3 vote (5/8 or 6/9). Changes to this Charter require a 2/3 vote of the Executive Committee and a 2/3 vote of the members at large. Faculty membership approval and termination of Executive Committee members also require a 2/3 vote of the Executive Committee.

D. Responsibilities

General - The Executive Committee is responsible for oversight of all aspects of *Stanford Immunology*, including deciding major policy and/or budgetary issues. The Executive Committee selects the chairs of the standing committees as terms expire and may suggest to the Director of ITI the names of faculty candidates for Director of *Stanford Immunology* and Director of the PhD Program in Immunology. The Executive Committee should ensure that the governance of *Stanford Immunology* is consistent with this Charter and should amend the Charter as appropriate. Significantly-revised versions of the charter must also be approved by the Senior Associate Dean for Graduate and Postdoctoral Affairs of the School of Medicine. Some specific areas of Executive Committee responsibility are described briefly below.

Programs and activities of *Stanford Immunology* - The Executive Committee hears reports from standing committee chairs (who are Executive Committee members) on the committees' activities and issues under discussion. For major changes in *Stanford Immunology* activities or programs (such as the addition of a new PhD track, major changes to the annual scientific conference (retreat), etc.), the recommended change should come to the Executive Committee for approval, as a seconded motion from the relevant committee. The decision as to which issues require Executive Committee approval will be made by its Chair in consultation with the relevant committee chair.

Faculty membership - The Executive Committee reviews and approves (usually by email vote) faculty applications for membership in *Stanford Immunology* and in the PhD Program in Immunology. It also has responsibility for reviewing annually the records of participation of faculty members in *Stanford Immunology* activities and recommends faculty who might move to provisional status or be terminated (see section V. Membership, below).

Faculty hiring - While faculty searches are carried out by departments, divisions, and in some cases by the Stanford Institutes of Medicine, the Executive Committee may identify and communicate to those entities particular needs or targets of opportunity for faculty hires in immunology. The Executive Committee may work with the relevant departments and Dean's Office to help to secure the appointments and to recruit candidates, and/or recommend other faculty to do so.

Funds oversight - The Executive Committee is responsible for the oversight of the use of funds available to *Stanford Immunology*, including NIH training grant(s), Dean's funds, and gift funds. The Director will monitor the budget and expenditures through regular updates from the Program Administrator and finance staff of ITI/M&I and participate in the annual budget development process. The Director will report annually on the budget to the Executive Committee.

Development - Fundraising is necessary for continuing a vital set of interdepartmental immunology programs and activities, such as the Immunology Seminar Series. As one of the Stanford Institutes of Medicine, the School of Medicine has given ITI responsibility and resources for development efforts in the field of immunology. The *Stanford Immunology* Executive Committee and its Director should work with the Director of ITI to identify ongoing funding needs (such as for the seminars and for tuition gaps), to consider other

Stanford Immunology programs and activities that could be enhanced by ITI development, and to consider how immunology faculty might contribute to the fundraising efforts.

Reporting – On behalf of the Executive Committee, the Director will report to the general membership of the Program every year at the annual scientific conference/retreat. Issues that arise may also be brought to the general membership on an *ad hoc* basis through email communications or a faculty meeting.

IV. OTHER STANDING COMMITTEES

The membership and responsibilities of the seven other standing committees are described below. The committee chairs (other than the Chair of the Graduate Program Committee, see next section) are appointed by the Executive Committee for three-year terms (renewable). Faculty committee members are selected by the Executive Committee for staggered three-year terms. Student and postdoctoral committee members are elected by their respective groups and serve one-year terms (renewable). The Director of *Stanford Immunology* and Program Administrators are *ex officio* members of all standing committees.

Committee chairs may establish *ad hoc* subcommittees for consideration of specific issues; establishment of a standing subcommittee requires approval by the Executive Committee.

A. Immunology Graduate Program Committee

Membership – The Chair of the Immunology Graduate Program Committee is the Director of the PhD Program in Immunology. The Director is appointed by the Director of ITI, in consultation with and with the approval of the Senior Associate Dean for Graduate and Postdoctoral Affairs of the School of Medicine, for a three-year term (renewable). The four additional faculty committee members should include the Chair of the Admissions Subcommittee, a standing subcommittee, and a representative of the Computational and Systems Immunology Committee. A sixth voting member is a graduate student.

Responsibilities - The Graduate Program Committee has responsibility for overseeing all aspects of the training, evaluation of student progress towards the degree, admissions, recruitment, orientation, funding, and approval for graduation of all graduate students in the Ph.D. Program in Immunology. This Committee has primary responsibility for all aspects of the Molecular, Cellular, and Translational Immunology (MCTI) track of the PhD Program in Immunology, as well as oversight of the Computational and Systems Immunology track initiated in 2012 (see section IV.A, above). The Committee will periodically review and, if necessary, make changes to the PhD program requirements, curriculum, resources for students, administrative procedures, admissions and orientation processes, and scientific and social activities for the students. The Committee has decision-making authority in those areas, except for major changes to the structure of the PhD program, which require approval by the Executive Committee (as decided by the Director of *Stanford Immunology*; a recent example was the establishment of the Computational and Systems Immunology track).

The Director of the PhD Program/Chair of the Graduate Program Committee has responsibility for overseeing the implementation of courses and degree requirements (including evaluating student requests for waivers of requirements), for approval of successful completion of PhD requirements, for decisions on student termination and disciplinary actions, and for overseeing the general welfare of graduate students in the Program, including student advising. The Director of the PhD Program shall solicit student input about the program through an annual town hall meeting, ongoing informal discussions with graduate students, and occasional surveys. The Director of the PhD Program in Immunology also has responsibility for assisting in the preparation of relevant sections of training grant proposals and renewal applications. The Director (or his/her designate) will serve as the Immunology PhD Program's representative to the Committee for Graduate Admissions and Policy (C-GAP) for the Biosciences. The Director of the PhD Program in Immunology is also a member of the ITI Steering Committee.

Admissions Subcommittee – This standing subcommittee reviews applications to the PhD Program in Immunology and selects interviewees and applicants to be offered admission. The committee includes a Chair (who is a member of the Graduate Program Committee) and five other faculty (including a representative of Computational and Systems Immunology), all serving staggered three-year terms, plus one graduate student serving a one-year term. The Chair of the Admissions Subcommittee should work with the

Director of the PhD Program in Immunology in planning activities during Interview Weekend and orientation activities in the fall.

B. Immunology Postdoctoral Program Committee

The Immunology Postdoctoral Program Committee has responsibility for overseeing postdoctoral training in immunology. It meets as needed to allocate interdepartmental postdoctoral training funds and coordinate programs for post-doctoral trainees. The Committee also has responsibility for reviewing and enhancing the training and general welfare of postdoctoral trainees in immunology. Included in this review should be the information and other resources provided to postdocs by the university, school, and *Stanford Immunology*; the quality of postdoc advising; and postdoc participation in *Stanford Immunology* activities. The Committee is comprised of the Chair and four other faculty members (including a representative of the Computational and Systems Immunology), serving staggered three-year terms, plus one basic immunology and one clinical immunology postdoctoral fellow.

The Chair of the Postdoctoral Program Committee should serve as *Stanford Immunology's* representative for discussions of postdoctoral affairs at the school or university level. The Chair also has responsibility for assisting the Director of *Stanford Immunology* in the preparation of relevant sections of training grant proposals and renewal applications.

C. Immunology Medical Education Committee

The Immunology Medical Education Committee has responsibility for the immunology education of medical students. This includes the teaching of the immunology course for medical students (currently IMM 205: Immunology in Health and Disease) and the Immunology application area of the medical students' scholarly concentrations. The Medical Education Committee has responsibility for the content of these two curricular components and may recommend additional immunology opportunities for medical students. At the time of leadership transitions in these curricular components the Committee should advise the Executive Committee (and any appropriate School of Medicine entities) as to possible candidates for the Director position. The Committee is comprised of the Directors of the IMM 205 course and of the Immunology Medical Scholars Program (Immunology scholarly application area), one (or two) additional faculty (depending on whether any issues are pending), one senior medical or MD/PhD student in immunology, and one immunology clinical fellow.

D. Immunology Retreat Committee

This Committee has responsibility for organizing the annual Immunology Scientific Conference (retreat), usually held in the fall at Asilomar. Each year the Executive Committee selects two faculty to organize the retreat; these faculty serve as the Co-Chairs of the Retreat Committee. They may select additional faculty and several graduate students and postdocs to assist in planning the organization, scientific content (including selection of a plenary speaker, session speakers, and moderators), and social activities of that year's retreat; included should be a representative from Computational and Systems Immunology. The Committee has decision-making authority over the overall schedule and speaker selection for the retreat; any major changes in the format, location, or timing of the retreat must be approved by the Executive Committee.

E. Immunology Seminar Committee

This Committee is responsible for the weekly Immunology Seminar Series. The seminar series is a requirement for Immunology Ph.D. students and is a community resource for education in the field of immunology. The series is designed to meet the interests of basic science and clinical immunologists, as well as to provide an in-depth learning experience for Immunology graduate students, postdocs, and other members of the immunology community. Each year the Executive Committee selects one or two faculty (preferably one basic and one clinical) to serve as Chair or Co-Chair of the Committee; they select a graduate student and a postdoc to assist in soliciting suggestions for the next year's speakers and in planning the seminar schedule for that year. Included should be suggestions from the Computational and Systems Immunology community. The Committee has decision-making authority over the speaker selection. Any major changes in the time slot or location of the seminars must be approved by the Executive Committee.

F. Computational and Systems Immunology Committee

The Computational and Systems Immunology (CSI) Committee advises the immunology community on training programs and activities in computational and systems immunology. It should have input into the other committees; where possible this should include representation on those committees. With respect to the Computational and Systems Immunology track in the PhD Program, the CSI Committee should make recommendations to the Graduate Program Committee on CSI track requirements and curriculum, should oversee advising and mentoring, and should monitor student degree progress and timely completion of degree milestones. It should have input to the Admissions Subcommittee on candidates interested in the CSI track. The CSI Committee should develop other activities, such as journal clubs or seminars, primarily intended for predoctoral and postdoctoral trainees within this track, but also possibly open to graduate students and postdoctoral fellows from other fields such as bioengineering, biomedical informatics, biostatistics, and computer science. The CSI Committee should assist the overall Immunology Seminar Committee in selecting and hosting distinguished seminar speakers in computational and systems immunology. It should also advise the Immunology Retreat Committee on selecting speakers for the Annual Scientific Conference.

G. Diversity, Equity, and Inclusion

The Diversity, Equity, and Inclusion (DEI) committee will advise the Executive Committee on the development and implementation of programs and policies to enhance diversity and to achieve equity for all trainees and faculty in the Program. The committee will consist of 5 faculty members, with one serving as Chair of the Committee, and 5 trainee (a mixture of pre- and post-doctoral) members. Faculty will serve 3 year terms and trainees will serve one year terms. All 10 members are eligible to vote. There will also be 2 alternate faculty and 2 alternate trainees that are available to attend meetings and vote in the event that a member is unavailable to attend the meeting. The Director and the Student Administrator are ex-officio members and the Director will have voting authority. Voting decisions will require a simple majority. The Committee has decision-making authority, however some decisions will require review, oversight, and approval by the Executive Committee, as decided by the Director of *Stanford Immunology*, for example recommendations with budgetary impact or that involve faculty responsibilities or that appear to overlap with the purview (or responsibilities) of other committees.

V. MEMBERSHIP

To become a faculty member in *Stanford Immunology* requires application (see below). All graduate students, postdocs, and research staff in the labs of faculty members of *Stanford Immunology* are automatically part of *Stanford Immunology*; there is no application requirement or official list. Students, postdocs, and research staff in non-immunology labs are welcome to attend the Immunology Seminars and may request to be added to the *Stanford Immunology* mailing list.

A. Faculty of *Stanford Immunology*

All faculty (Tenure-Line, Non-Tenure Line, Medical Center Line, and emeriti faculty) may be members of *Stanford Immunology*. Faculty requesting membership should apply with a cover letter and CV to the Executive Committee through the Program Administrator. The letter and CV are passed to the Executive Committee members for review and vote. The Executive Committee will vote (yes/no) on acceptance to membership in *Stanford Immunology*. A 2/3 vote is required to be admitted. An acceptance letter will include the requirements of membership: participating on the various committees (e.g., Postdoctoral, Graduate Program, Admissions; student dissertation committees), as well as attending the Immunology Seminars series, the annual Immunology Scientific Conference, and other Immunology activities that provide opportunities for interactions with graduate students and postdocs. Applicants who have not previously demonstrated a major commitment to immunology research, training, or teaching will be asked to participate in the program activities for a year before full membership is considered; during this year they will be associate members.

All faculty members of *Stanford Immunology* are welcome to participate in most of its activities. The exceptions are eligibility for postdoctoral training grant support (for emeriti, this is limited to those who have been recalled to active duty) and for serving as advisors for graduate students (see section B, below, for criteria).

In order to maintain membership in good standing in *Stanford Immunology*, continuous participation in program activities (as listed above) is expected of all faculty members. The Executive Committee annually will review a rolling three-year summary of faculty participation. If the faculty member does not participate adequately in program activities, the Executive Committee will decide whether s/he should continue as a faculty member in *Stanford Immunology*. After two years of non-participation the faculty member may be given a warning and be placed on provisional status; if no improvement is shown in the third year, the Executive Committee will vote (yes/no) whether to discontinue his/her membership in *Stanford Immunology*. A 2/3 majority of the Executive Committee is required to revoke membership.

As mentioned in section III above, on behalf of the Executive Committee the Director will report to the general membership of the Program every year at the annual Immunology Scientific Conference (retreat). Issues that arise may also be brought to the general membership on an *ad hoc* basis through email communications or a faculty meeting. Members should contact the Director or Program Administrator if there are issues they would like discussed by the Executive Committee or faculty as a whole. Changes to this Charter require a 2/3 vote of the Executive Committee and a 2/3 vote of faculty members.

B. Faculty of the PhD Program in Immunology

At Stanford University, eligibility to serve as primary advisors of graduate students is limited to active Academic Council (Tenure-Line and Non-Tenure Line) faculty. *Stanford Immunology* faculty in these lines who wish to be considered as potential primary advisors for graduate students in the Ph.D. Program in Immunology must apply to the Director of the PhD Program (via the Program Administrator) with a letter, CV, and a list of any former doctoral or postdoctoral trainees. The eligibility criteria for faculty of the PhD Program in Immunology are: 1) Academic Council position; 2) acceptance as faculty in *Stanford Immunology* (see above); 3) a productive research program in immunology; 4) prior experience advising/mentoring students or postdocs; and 5) active participation in events and activities sponsored by *Stanford Immunology*. The Director will bring candidates to the Immunology Graduate Program Committee, where a 2/3 vote of all committee members is required for nomination of the faculty member to the Executive Committee. The Executive Committee will vote (yes/no) on acceptance as Faculty of the PhD Program in Immunology. Approval requires a 2/3 vote.

In addition to the criteria mentioned above, *Stanford Immunology* faculty who wish to be primary advisors of students in the Computational and Systems Immunology track also should have a productive research program in computational and systems immunology, with at least one publication using computational approaches. New faculty members for the CSI track are first approved by the CSI Committee and the Graduate Program Committee and then officially confirmed by the *Stanford Immunology* Executive Committee. Continued eligibility to co-advise CSI graduate students depends on ongoing participation in CSI Track activities, reviewed on an annual basis by the CSI Graduate Program Committee.

To be a faculty member in good standing in the PhD Program in Immunology, and to be eligible for mentoring new graduate students, faculty are expected to contribute actively and on an ongoing basis both to formal aspects of graduate student training and to more informal interactions with students. Examples of opportunities for faculty participation in these two classes of activities are the following:

Graduate student training: teaching immunology courses; organizing/participating in the boot camp, workshops, and symposia; serving as primary and secondary advisor to graduate students and on dissertation committees; serving on Program committees (Immunology Graduate Program Committee, Admissions Subcommittee; Seminar Committee; Retreat Committee); interviewing applicants.

Informal interactions with students: attendance at the annual retreat (at least every-other-year, on average), weekly Immunology Seminars, symposia, student research-in-progress talks, happy hours, and other social occasions (e.g., Summer BBQ, Holiday Party, Interview Weekend dinner); hosting faculty dinners for first-year graduate students.

Each year the Executive Committee will review a rolling three-year summary of the participation of individual faculty in the above activities. The Chair of the Executive Committee (Director of *Stanford Immunology*) will talk with faculty who are judged to have not made adequate contributions to graduate training to see if they plan to participate more actively in the PhD Program; if so they will be retained on the active roster of potential faculty advisors for a one-year trial period. Faculty who do not plan to contribute actively to the Program or who failed to do so during their one-year trial period will be removed from the active roster of faculty in the PhD Program in Immunology, i.e., those eligible to get new graduate students, but, depending on other contributions, may continue as members of *Stanford Immunology*.

C. Affiliated faculty of the PhD Program Track in Computational and Systems Immunology

It is recognized that students in the CSI PhD track may seek faculty advisors with relevant computational and systems expertise outside the field of immunology, including faculty in other medical school departments (e.g., Genetics) or in other schools (e.g., Engineering departments such as Computer Science). Such faculty who wish to advise CSI track students but who do not want to become full members of the PhD Program in Immunology (for example, they may not want to participate as actively in *Stanford Immunology* activities as required for full faculty status) may request the status of affiliated faculty and serve as co-advisors of students in the CSI track. These students must, however, have a co-advisor who is a faculty member of the PhD Program in Immunology.

The criteria for choosing new affiliated faculty of the CSI track are: 1) Academic Council (tenure-line or research faculty) position; 2) a productive research program in computational and systems biology or related areas such as computer science, biostatistics, bioengineering, etc., with at least one publication using computational approaches; 3) a demonstrated record of training PhD students and/or MD/PhD students and postdoctoral fellows; 4) a willingness to participate in CSI activities. New affiliated faculty members for the CSI track are first approved by the CSI Graduate Program and the Graduate Program Committee and then officially confirmed by the *Stanford Immunology* Executive Committee. Continued eligibility to co-advise CSI graduate students depends on ongoing participation in CSI Track activities, reviewed on an annual basis by the CSI Graduate Program Committee.

