



FACULTY of 1000  
POST-PUBLICATION PEER REVIEW

Evaluated Articles

Advanced Search

Evaluated Articles | Rankings | Reports | Faculty | Naturally Selected

MyF1000 About Register

6th International Conference on  
**Structural Analysis of Supramolecular Assemblies by Hybrid Methods**  
March 14-18, 2012, Lake Tahoe, CA

Find out more >>

F1000 » Evaluated Articles »

8 Default-mode network activity distinguishes Alzheimer's disease from healthy aging: evidence from functional MRI.

Greicius MD, Srivastava G, Reiss AL, Menon V  
Proc Natl Acad Sci U S A. 2004 Mar 30; 101(13):4637-42

Evaluations 1

Comments 0

Related Evaluated Articles

Abstract

Add to MyF1000 Export

Article Links and Sharing

Full text in journal

Available on: PubMed | Google Scholar

Retrieve article from:

More Options

Relevant Sections

Additional Info

Michael Moseley, Stanford University School of Medicine, California, USA. F1000

Neurological Disorders

8 MUST READ

12 Sep 2006 | Confirmation

This study suggests that, as well as Alzheimer's disease (AD), numerous cognitive disorders might show altered resting state activity, and that functional MRI (fMRI) might now be useful in countless other applications in which active paradigm participation is required.

This is one of many new evolving studies showing the value of 'resting-state fMRI' in neuroimaging in understanding how the brain functions in a default-mode or resting state.

Most importantly, AD patients displayed less resting-state activity than the age-matched controls in all areas identified as active areas in a default mode of rest, including areas identified within the hippocampus.

**Competing interests:** M.M. is from the same institution as the authors but has had no involvement in this study.

[Cite this evaluation](#)

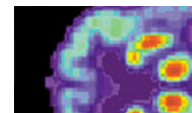
[Cite this page](#)

F1000Research

THE NEW OPEN ACCESS PUBLISHING PROGRAM FROM FACULTY OF 1000

Transforming scholarly communication.  
JOIN US via RSS, Twitter and more >>

RELATED F1000 REPORTS



Alzheimer's - Looking beyond plaques  
W. Sue T. Griffin



Molecular insights into Parkinson's disease  
Bobby Thomas, M. Flint Beal

Is deep brain stimulation a prospective "cure" for addiction?

Wayne Hall, Adrian Carter

---

**6th International Conference on  
Structural Analysis of Supramolecular Assemblies by Hybrid Methods**  
March 14-18, 2012, Lake Tahoe, CA

[Find out more >>](#)

---

[Evaluated Articles](#) | [Rankings](#) | [F1000 Reports](#) | [F1000 Posters](#) | [F1000 Research](#) | [Faculty](#) | [Naturally Selected](#)  
[Contact](#) | [About](#) | [Library Resources](#) | [Press Office](#) | [Register](#) | [Subscribe](#) | [Sponsorship](#) | [Affiliates](#) | [Science Navigation Group](#)

© 2000-2012 Faculty of 1000 Ltd. ISSN 1759-796X Legal | Partner of HINARI CrossRef