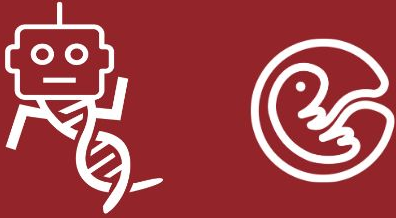
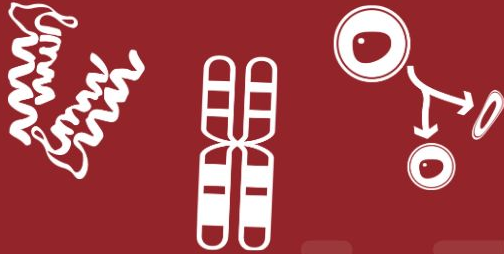


SB  SA

# GENERAL MEETING

WED DEC 15, 4 PM



# Agenda

1. Fall Quarter in Review
2. SBSA and BioSci Connect Mentoring Month Challenge
3. Incentives Program
4. Open Floor

# Fall Quarter in Review

8 Program Proposals Funded

Major events:

- Camping Trip
- Fall BBQ
- BARF
- Lab Grab

# SBSA and BioSci Connect Mentoring Month Challenge

The Mentoring Challenge will be an opportunity for each Home Program to build their BioSci Connect community. To enter the challenge, students should:

1. Register with BioSci Connect
2. Reach out to a potential BioSci Connect mentor
3. The first 50 students who do so will receive a \$10 Peet's gift card!
4. The Home Program earns a point for every student (from that Home Program) that sends a new connection request to any BioSci Connect mentor.

Home Program with the maximum points will be announced at the **BioSci Connect Happy Hour** on Thursday, February 3, 4-5:30pm, Alway Courtyard. We will have food, drinks, and lots of opportunities to make new connections!

Details and RSVPs will be sent out in January!

# Incentive Program

**Congrats to our winners!**

*William Feist*

*Shamsi Soltani*

*Ariel Hannum*

If you didn't win, don't worry! Raffle entries roll over.

Keep track of events you attend at this form:

<https://forms.gle/12bBcing7XN5HVM DA>

# Resources

- Sheri Krams (OGE Senior Associate Dean for Graduate Education and Postdoctoral Affairs) Office Hours
  - Wednesday 2-3pm
  - Zoom link:  
<https://stanford.zoom.us/j/95555995346?pwd=LzhvUHlHazRrblo0U293dmxuK045UT09>
- Check In with David Schneider, Biosciences Advising Dean for Graduate Students and Postdocs
  - You can book a time with him here: <https://dschneideradvising.youcanbook.me>
- SBSA Slack workspace
  - Please fill this out if you want to be added to the workspace:  
<https://forms.gle/evUA3jK1EmITgCH98>

# Follow us on social media!



SBSAOfficial



SBSA\_official



SBSA\_official