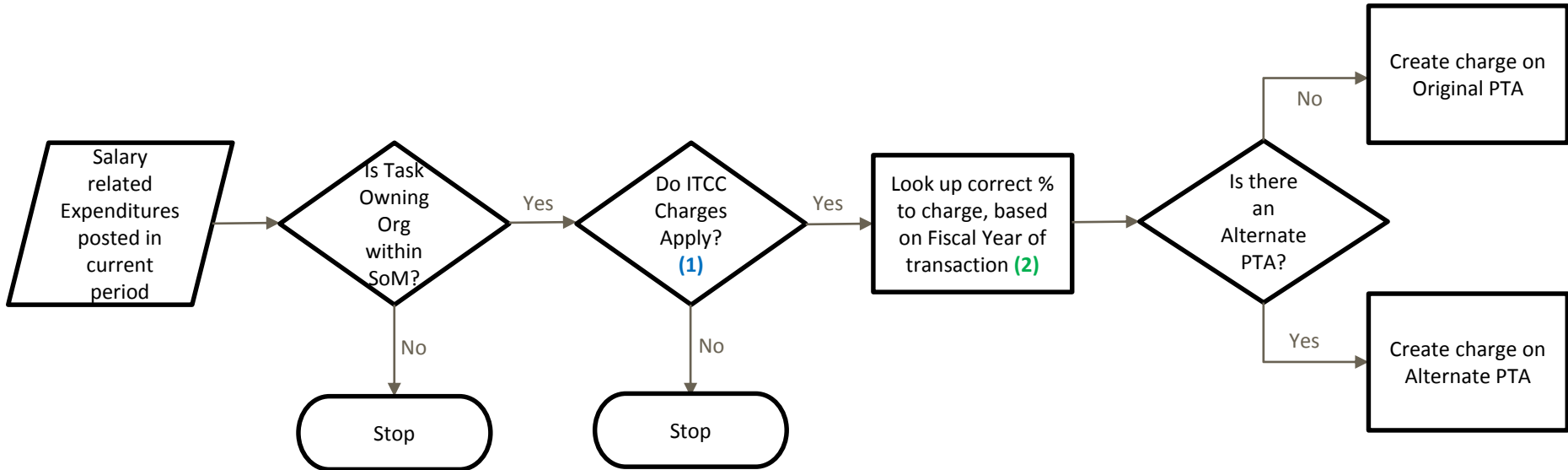


Converged Communications (ITCC)

Application of Charges



(1) ITCC Charges are applied if:

- The Expenditure Type is applicable
- The Award Type is applicable
- The Award Purpose is applicable
- The Award has not been specifically excluded

(2) ITCC Rates:

FY 2013	0.8%
FY 2014	1.5%
FY 2015	2.1%
FY 2016	3%
FY 2017	3%

Excluded Award Types:

CLR_EXP_ALLOC	SER_ACADEMIC	SPO_OTH_GOVT_GRANT
END_IP_DAF	SER_ADMINISTRATIVE	SPO_PR_SVC_AGR_FED_CONTRACT
END_IP_OTHER	SER_BGT_POOL	SPO_PR_SVC_AGR_NGOV_CONTRACT
END_IP_PENDING	SER_SPECIALIZED	SPO_SUBCONTRACT_CA
END_IP_POOL	SPO_CA_CONTRACT	SPO_SUBCONTRACT_FED
END_IP_RES	SPO_CA_GRANT	SPO_SUBCONTRACT_OTH_GOVT
END_TR	SPO_FED_CONTRACT	SPO_SUBGRANT_CA
GEN_OB_NONCAP	SPO_FED_GRANT	SPO_SUBGRANT_FED
PPE_FED_GRANT	SPO_FED_PROGRAM_INCOME	SPO_SUBGRANT_OTH_GOVT
REC_PROGRAM_INCOME	SPO_NON_FED_PROGRAM_INCOME	SPO_UNIVERSITY_FUNDED_AWARD
REC_SLAC_INTERCOMPANY	SPO_OTH_GOVT_CONTRACT	