

2021 Spectrum Pilot Grants in Population Health Sciences

CENTER FOR POPULATION HEALTH SCIENCES
INFORMATION SESSION

March 2, 2021

Agenda

1. Introduction to PHS
2. Overview of the 2021 Request for Proposals
3. PHS Data & Research Resources
4. Application Timeline
5. Q&A

PHS Mission

To improve the health of populations by bringing together diverse disciplines and data in order to address social determinants of health (SDOH).

Our strategy is built around five core pillars:

- Data
- Research
- Education
- Community
- Translation

What Is Population Health?

Population health is a relatively new term that has not yet been precisely defined. Is it a concept of health or a field of study of health determinants?

We propose that the definition be “the health outcomes of a group of individuals, including the distribution of such outcomes within the group,” and we argue that the field of

popula
health
health
cies an
these t

David Kindig, MD, PhD, and Greg Stoddart, PhD

ALTHOUGH THE TERM

“population health” has been much more commonly used in Canada than in the United States, a precise definition has not been agreed upon even in Canada, where the concept it denotes has gained some prominence. Proba-

that in Canada
Kingdom in the
has taken on th
a “conceptual fr
thinking about
tions are health
well as the polic
research agenda

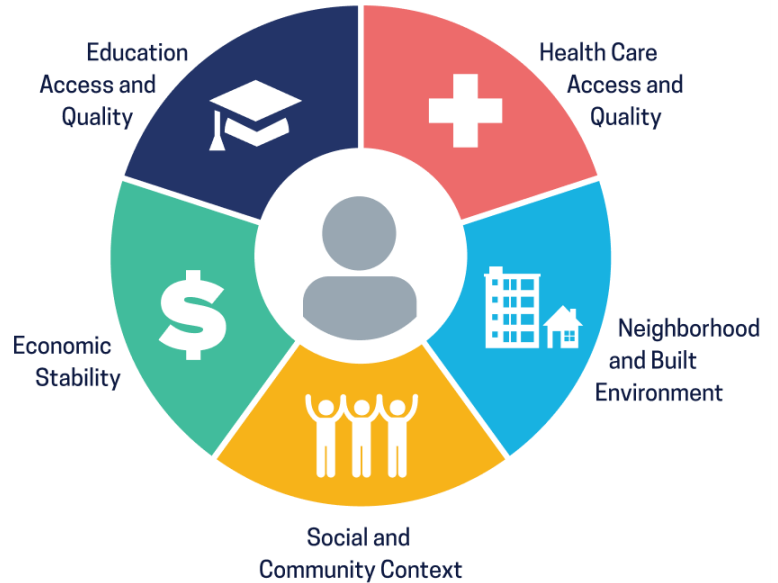
approach is “an increased focus on health outcomes (as opposed to inputs, processes, and products) and on determining the degree of change that can actually be attributed to our work.”^(p11)

a “conceptual framework for thinking about why some populations are healthier than others as well as the policy development, research agenda, and resource allocation that flow from this framework.”^{3(p4)}

March 2003, Vol 93, No. 3 | American Journal of Public Health

What are social determinants of health?

Social determinants of health (SDOH) are the conditions in the environments where people are born, live, learn, work, play, worship, and age that affect a wide range of health, functioning, and quality-of-life outcomes and risks. SDOH can be grouped into five domains.



Recommended References:

- [*Healthy People 2030*](#), U.S. Department of Health and Human Services, Office of Disease Prevention and Health Promotion.
- [*CDC Overview on Social Determinants of Health*](#)

2021 Spectrum PHS Pilot Grants

Two types of grants:

- ❖ Early career (PhD students, postdoctoral scholars) pilot grants up to \$20,000
- ❖ Faculty pilot grants up to \$40,000

Requirements & Eligibility:

- ✓ Completed within timeline: July 1, 2021 - June 30, 2022 (no extensions)
- ✓ Multidisciplinary; spanning across Stanford schools
- ✓ PI must be Stanford faculty with PI eligibility*
- ✓ Projects must be US-based (no foreign components)
- ✓ Clinical trials as defined by the NIH are not eligible**
- ✓ Applicants cannot have other current NIH training grants during the award period

*Clinical Educator (CE) faculty, clinical instructors, graduate students, and postdoctoral scholars (clinical and non-clinical) are encouraged to apply and are required to include a PI eligible faculty member as lead PI on the application. CE faculty can also apply for a [PI waiver](#).

** NIH clinical trials [definition](#)

Evaluation Criteria

- ✓ *Potential impact*
- ✓ *Social inequality focus*
- ✓ *Methodological rigor*
- ✓ *Scope & budget*
- ✓ *Contribution to investigator training in population health research*
- ✓ *Potential to lead to longer-term projects*

Recommend all interested applicants review the 2020 Spectrum PHS Pilot Projects posted on the [PHS website](#).

PHS Datasets

Datasets	Description
CMS 20%	<ul style="list-style-type: none">• ~11 million people; 20% of Medicare population• Payment claims• Detailed demographic and socioeconomic data• 2006 – 2018• Representative of the US population
Census (IPUMS)	<ul style="list-style-type: none">• Historic US Census data from 650 million individual-level and 7.5 million households• Individual and household level characteristics linkable by name/address.• Demographic, economic, migration and family variables• Possible to map family relationships within households and follow longitudinally• Unique source for social and economic change.

PHS Datasets

Datasets	Description
Born in Bradford	<ul style="list-style-type: none">• Prospective pregnancy and birth cohort• Low income multi-ethnic population in the UK• Biologic and anthropometric, survey, environmental and administrative data• 13,500 children and mothers (~3,000 fathers)• Biobank includes 250,000 samples of maternal blood, DNA and urine.• ~25% of South Asian (90% Pakistani); 64% is White British
Optum	<ul style="list-style-type: none">• National sample of commercially insured individuals.• 72M people; 17-year span• De-identified commercial claims (single insurance provider)• Medical and pharmacy claims w/ enrollment• Data are geographically diverse across the US and fairly representative of the US population and includes ages from birth to over 100.• Race/ethnicity and financial resource information ~80 percent of cohort• Data overlay with five-digit zip code or time variables

For More Information on PHS Datasets

- [Detailed description of PHS Datasets](#)
- [Apply for PHS Data](#)
- [PHS Data Portal](#)
- [PHS Data User Slack Channel](#)
- [Nero Computational Environment](#)

Additional PHS Research Resources

- **Data** – facilitate access to large, well-curated population-level datasets
- **Funding** – help identify and secure awards for follow on projects
- **Match-Making** – support the connection of ideas, people, and resources inside and outside of Stanford
- **Community Engagement** – provide technical assistance and online tools for community engaged research
- **Research Management** – spearhead and manage research initiatives
- **Dissemination** – ensure research outputs are tailored for and accessible to target audience

Timeline

- Application Deadline: **11:59pm PDT | March 31, 2021**
- Award Notifications: **April 30, 2021**
- Office Hours Session*: **1:00-2:00pm PDT | May 5, 2021**
- Grants Awarded: **July 1, 2021**
- Funding Period: **July 1, 2021 - June 30, 2022**

* Required attendance for all final grantees. Additional materials will need to be submitted in May in order to receive the awarded funds in July.

Questions?

Alistair Lindawson, PHS Associate Director for Research Programs

alindawson@stanford.edu

- *For questions related to project scope, application review process, and award notifications*

Ellen Orasa, KL2 Manager

eorasa@stanford.edu

- *For questions related to eligibility, application documentation, and online application submission*

Q&A

APPLICATION DEADLINE

11:59PM PDT | WEDNESDAY, MARCH 31, 2021

Link [to apply](#).

More information, visit the [PHS website](#).