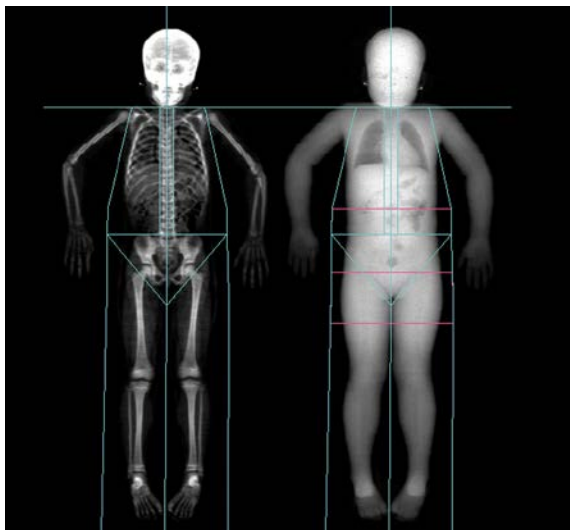
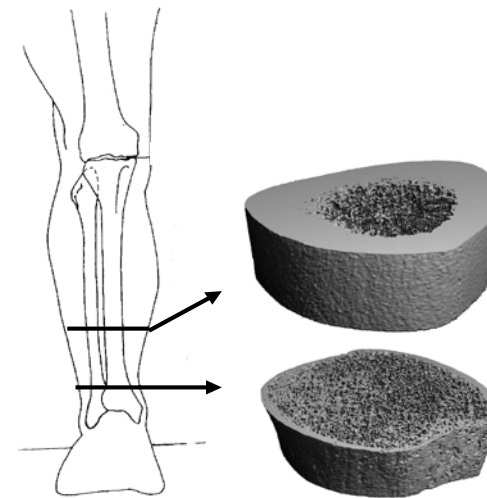


## How does type 1 diabetes affect bone health in children and adolescents?



The Stanford Assessment of Muscle and Bone across the Ages (SAMBA) Center and the Division of Pediatric Endocrinology are seeking children ages **10-17 years** with **type 1 diabetes for at least 3 years** to participate in a study.

### Participation will involve:

- DXA scan
- High resolution CT (HR-pQCT) scan
- Strength test
- Blood & urine test
- Questionnaire

### Potential benefits include:

- Furthering our understanding of how bone and muscle health are affected by type 1 diabetes
- Participants will receive \$100 for completion of the study

**Contact Hilary Seeley, MD: 650-723-5046 [hseeley@stanford.edu](mailto:hseeley@stanford.edu)**