



Lucile Packard
Children's Hospital
Stanford



Mary Leonard, MD, MSCE
Arline and Pete Harman Professor and Chair
Department of Pediatrics
Adalyn Jay Physician-in-Chief, Lucile Packard Children's Hospital
Director, Stanford Child Health Research Institute

PEDIATRICS EXECUTIVES & DIVISION CHIEFS



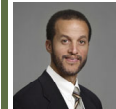
Michael Propst
Associate Chair,
Finance
& Administration



Christy Sandborg, MD
Associate Chair,
Clinical -
Hospital Affairs



Scott Sutherland, MD
Associate Chair,
Clinical - Faculty



Eric Sibley, MD, PhD
Associate Chair,
Academic Affairs



Gary Shaw, MPH, DPH
Associate Chair,
Clinical Research



Lisa Chamberlain, MD
Associate Chair,
Advocacy



Becky Blankenburg, MD, MPH
Associate Chair,
Education



Neville Golden, MD
Adolescent Medicine



David Lewis, MD
Allergy, Immunology
& Rheumatology



Stephen Roth, MD, MPH
Cardiology



Timothy Cornell, MD, FAAP
Pediatric Critical Care Medicine



Heidi M. Feldman, MD, PhD
Developmental - Behavioral



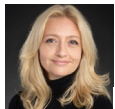
David Maahs, MD, PhD
Endocrinology



Sohail Husain, MD
Gastroenterology



Lee Sanders, MD, MPH
General Pediatrics



Tanja Gruber, MD, PhD
Hematology, Oncology,
Stem Cell Transplantation &
Regeneration



Mark Kay, MD, PhD
Human Gene Therapy



Joseph Kim, MD
Hospital Medicine



Yvonne "Bonnie" Maldonado, MD
Infectious Diseases



Jon Bernstein, MD
Medical Genetics



David K. Stevenson, MD
Neonatal & Developmental
Medicine (interim)



Steven R Alexander, MD
Nephrology



David Cornfield, MD
Pulmonary Medicine



Russ Altman, MD, PhD
Systems Medicine (interim)