

Brain, Sleep, and Cognition Research Study

Stanford University & SRI International

Dr. Eva Müller-Oehring & Daria Shariff



Stanford
MEDICINE

About the research

We are researching the effects of aging with Parkinson's Disease on the structure and functioning of the brain

- This is a sleep, cognition, motor function, and imaging study of the brain



Where does the study take place?

SRI International

- 333 Ravenswood Ave
- Menlo Park, CA



Email:

hivpd23study@stanford.edu

Phone:

(650) 492 - 8837

*The principal investigators for this study are
Tilman Schulte, PhD (SRI) and
Kathleen L. Poston, MD (Stanford Neurology)*



Our Goal

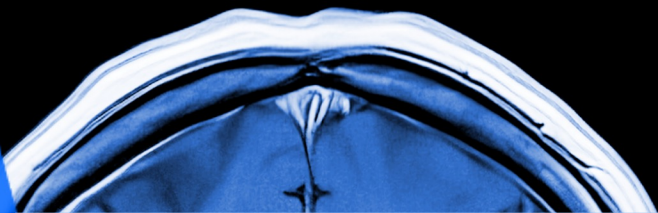
- We want to learn more about changes in the brain with aging
- Our study will contribute to understanding aging and brain changes in Parkinson's Disease

We are looking for volunteers

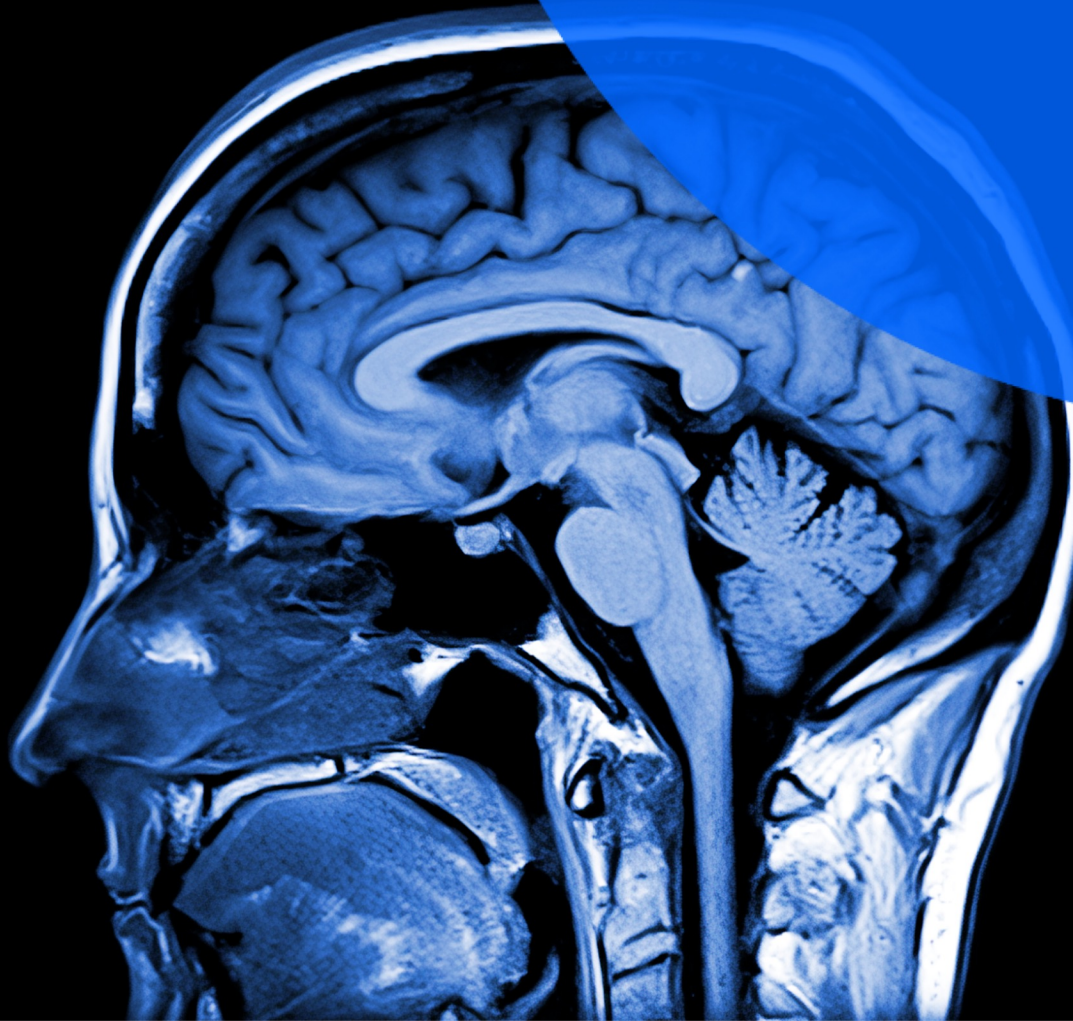
- Who are 50-80 years old
- With Parkinson's Disease
for at least 2 years
- On dopaminergic medication
- Who can do an MRI scan

You will be compensated for your time





MRI Scan



Participating in this study involves:

Day 1

14 days at-home
sleep assessment

Day 2



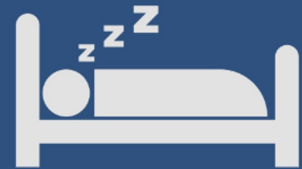
Cognitive Tests



MRI Brain Scan

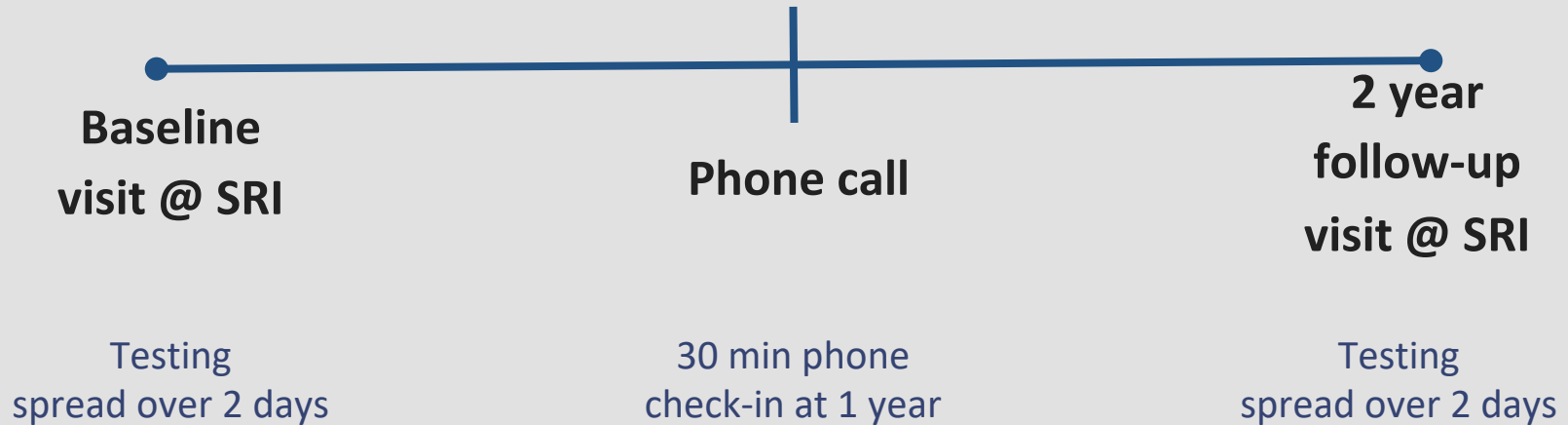


Motor Exam

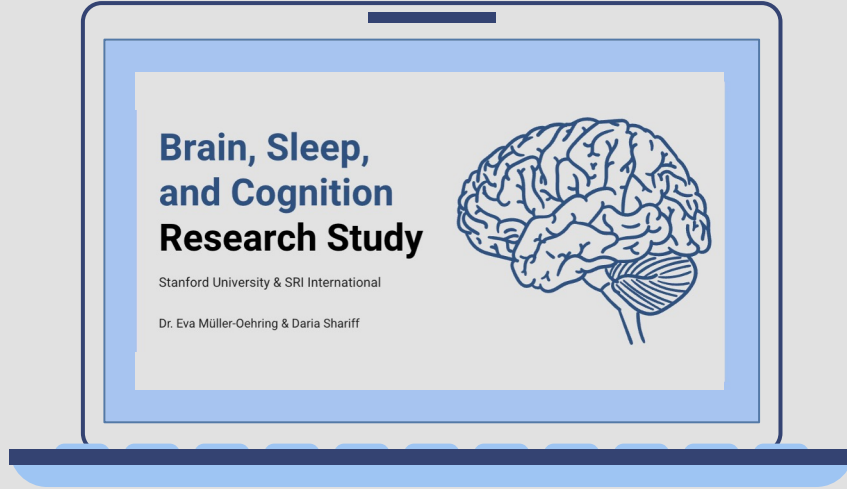


Sleep
Assessment

Participating in this study involves:



Contact Us



Email:

hivpd23study@stanford.edu

Phone:

(650) 492 - 8837

**Or... please message us your email or phone number in
the chat and we will contact you!**

Thank you!

Do you any questions?

