

WYOMING

CONTACT THE STAFF

COORDINATOR:

Heidi Gurov, BSN RN
Email: heidi.gurov@wyo.gov
Phone: 307-777-8981
Fax: 307-777-3615

ADDRESS:

Wyoming Department of Health
6101 Yellowstone Avenue, Suite 420
Cheyenne, WY 82002

SCREENING REQUIREMENTS

Does the jurisdiction require screening of pregnant women for hepatitis B infection or hepatitis B surface antigen (HBsAg)?

No

Does the jurisdiction specifically require reporting of positive HBsAg status in pregnant women?

No

COMPLETION OF HEPATITIS B VACCINATION SERIES

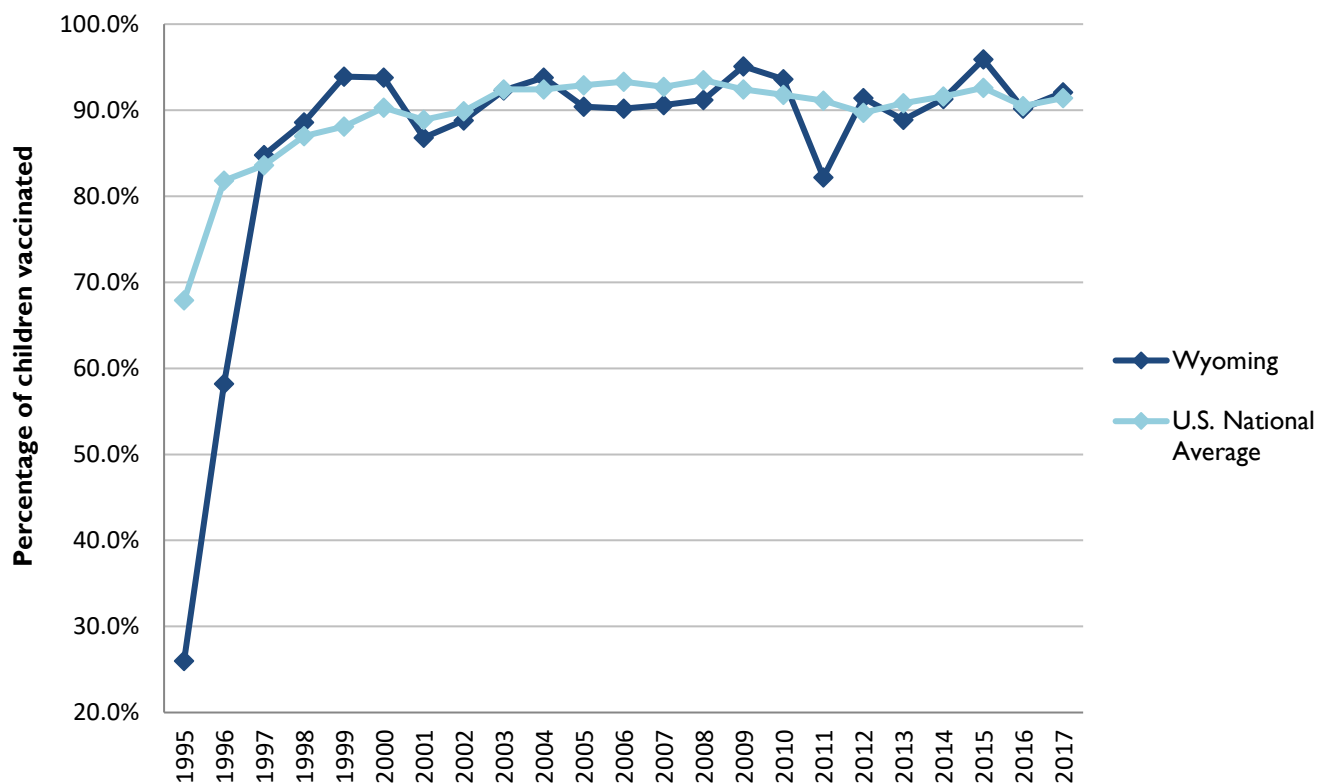
3 or more doses among children 19-35 months of age

	Percentage of children 19-35 months of age receiving 3 or more doses	Rank among other states	U.S. National Average	#1 ranked state and coverage
1995	26.0 ± 6.7%	51	67.9 ± 1.3%	88.5 ± 5.4% (South Carolina)
1996	58.2 ± 6.0%	51	81.8 ± 0.9%	95.8 ± 2.2% (South Carolina)
1997	84.8 ± 4.4%	25	83.6 ± 0.8%	91.6 ± 4.2% (New Jersey)
1998	88.6 ± 3.7%	21	87.0 ± 0.7%	94.1 ± 2.7% (South Carolina)
1999	93.9 ± 3.2%	2	88.1 ± 0.7%	94.0 ± 3.1% (Rhode Island)
2000	93.8 ± 2.8%	8	90.3 ± 0.6%	96.4 ± 1.9% (Rhode Island)
2001	86.8 ± 4.8%	36	88.9 ± 0.7%	95.8 ± 2.2% (Rhode Island)
2002	88.8 ± 4.8%	37	89.9 ± 0.7%	97.0 ± 2.0% (Rhode Island)
2003	92.3 ± 3.3%	26	92.4 ± 0.6%	98.2 ± 1.4% (Connecticut)
2004	93.8 ± 3.0%	22	92.4 ± 0.6%	96.8 ± 1.7% (Florida)
2005	90.4 ± 4.7%	40	92.9 ± 0.6%	97.9 ± 2.0% (Massachusetts)
2006	90.2 ± 4.3%	43	93.3 ± 0.6%	97.8 ± 1.6% (Rhode Island)
2007	90.6 ± 5.0%	44	92.7 ± 0.7%	98.6 ± 1.5% (New Hampshire)
2008	91.2 ± 3.8%	45	93.5 ± 0.7%	98.1 ± 1.6% (Connecticut)
2009	95.1 ± 3.1%	12	92.4 ± 0.7%	98.8 ± 1.5% (Rhode Island)
2010	93.6 ± 3.6%	19	91.8 ± 0.7%	98.3 ± 1.5% (North Dakota)
2011	82.2 ± 9.3%	51	91.1 ± 0.7%	96.2 ± 2.1% (Georgia)
2012	91.4 ± 3.8%	18	89.7 ± 0.9%	96.3 ± 3.0% (Georgia)
2013	88.9 ± 5.5%	39	90.8 ± 1.0%	96.7 ± 2.3% (Rhode Island)
2014	91.3 ± 4.8%	35	91.6 ± 0.9%	97.6 ± 1.8% (Louisiana)
2015	95.9 ± 2.5%	5	92.6 ± 0.7%	97.3 ± 2.3% (Connecticut)
2016	90.2 ± 4.1%	32	90.5 ± 1.1%	97.4 ± 1.9% (Iowa)
2017	92.1 ± 3.5%	25	91.4 ± 0.9%	97.7 ± 1.6% (North Dakota)

Data compiled by the ALC from National Immunization Surveys, 1995-2017¹,
<https://www.cdc.gov/vaccines/imz-managers/coverage/childvaxview/data-reports/hepb/index.html>

GRAPH:

Percentage of Children 19-35 Months of Age Receiving 3 or More Doses of Hepatitis B Vaccine



Data compiled by the ALC from National Immunization Surveys, 1995-2017¹, <https://www.cdc.gov/vaccines/imz-managers/coverage/childvaxview/data-reports/hepb/index.html>

HEPATITIS B BIRTH DOSE VACCINATION COVERAGE

1 or more dose among infants within 3 days of birth

	Percentage of infants receiving			Rank among other states according to		
	1 dose within 1 day of birth*	1 dose within 2 days of birth	1 dose within 3 days of birth*	1 dose within 1 day of birth	1 dose within 2 days of birth	1 dose within 3 days of birth
2003		26.2 ± 5.9%		N/A	42	N/A
2004		39.5 ± 6.9%		N/A	36	N/A
2005		29.7 ± 7.1%		N/A	43	N/A
2006	36.9 ± 6.5%	38.8 ± 6.6%	40.1 ± 6.7%	35	39	39
2007	50.2 ± 7.7%	51.3 ± 7.7%	52.0 ± 7.7%	27	34	36
2008	61.7 ± 6.5%	62.7 ± 6.4%	63.5 ± 6.4%	13	24	27
2009	60.1 ± 6.8%	61.2 ± 6.8%	61.2 ± 6.8%	17	28	32
2010	56.3 ± 7.4%	58.4 ± 7.3%	58.4 ± 7.3%	30	37	41
2011	67.9 ± 7.6%	69.7 ± 7.4%	70.8 ± 7.3%	17	26	29
2012	64.0 ± 7.1%	64.8 ± 7.1%	64.8 ± 7.1%	26	41	42
2013	64.5 ± 8.3%	66.0 ± 8.0%	67.0 ± 8.0%	26	39	42
2014	70.9 ± 8.9%	72.2 ± 8.8%	72.4 ± 8.8%	22	30	36
2015	65.4 ± 7.4%	66.6 ± 7.3%	67.2 ± 7.3%	29	39	44
2016	58.1 ± 7.1%	59.0 ± 7.0%	59.5 ± 7.0%	40	49	49
2017	62.3 ± 6.8%	65.0 ± 6.6%	65.8 ± 6.5%	39	44	47

*No data available 2003-2005

2017 U.S. NATIONAL AVERAGE

Day 1: 65.7 ± 1.6%
Day 2: 72.0 ± 1.6%
Day 3: 73.6 ± 1.6%

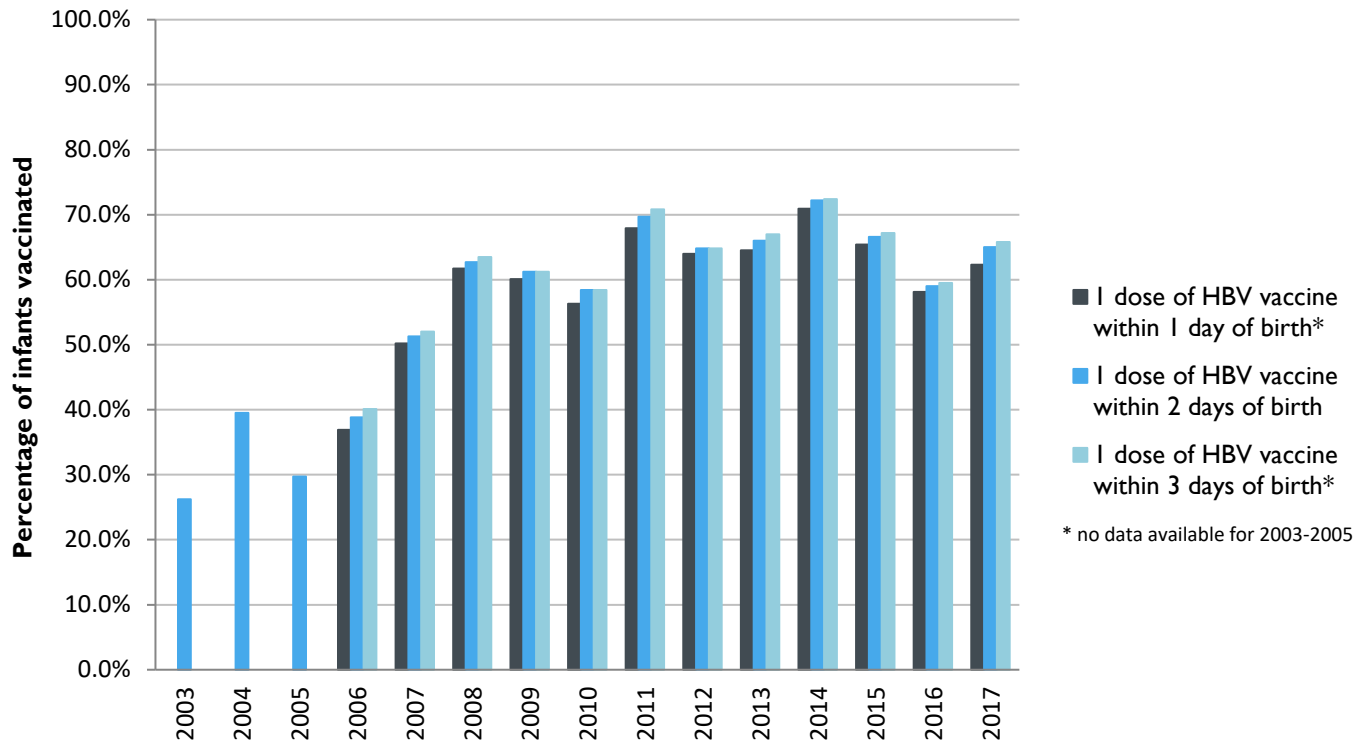
2017 HIGHEST BIRTH DOSE COVERAGE

Day 1: 82.0 ± 5.7% (Kentucky)
Day 2: 84.1 ± 5.6% (Kentucky)
Day 3: 84.1 ± 5.6% (Kentucky)

Data compiled by the ALC from National Immunization Surveys, 1995-2017¹,
<https://www.cdc.gov/vaccines/imz-managers/coverage/childvaxview/data-reports/hepb/index.html>

GRAPH:

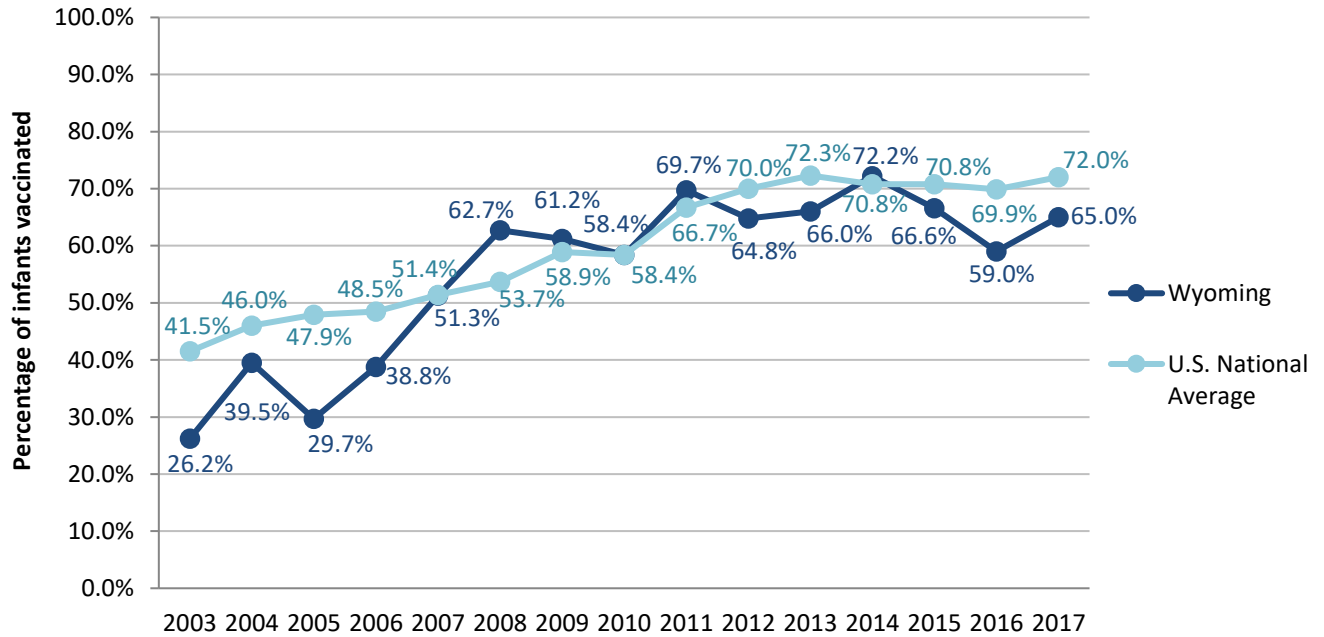
Estimated Vaccination Coverage for Hepatitis B Vaccine among Children from Birth to 3 Days of Age in Wyoming



Data compiled by the ALC from National Immunization Surveys, 1995-2017¹,
<https://www.cdc.gov/vaccines/imz-managers/coverage/childvaxview/data-reports/hepb/index.html>

GRAPH:

Percentage of Infants Receiving 1 Dose of Hepatitis B Vaccine within 2 Days of Birth



Data compiled by the ALC from National Immunization Surveys, 1995-2017¹,
<https://www.cdc.gov/vaccines/imz-managers/coverage/childvaxview/data-reports/hepb/index.html>

¹ The data from the National Immunization Surveys constitute a composite of data from children who were 19-35 months of age at the time of the survey. Therefore, the data might reflect a different estimate from the states' own birth cohort data.