

WISCONSIN

CONTACT THE STAFF

COORDINATOR:

Stephanie Borchardt, PhD, MPH
Email: Stephanie.Borchardt@dhs.wisconsin.gov
Phone: 608-266-9923
Fax: 608-267-9493

ADDRESS:

Wisconsin Immunization Program
1 West Wilson Street, P.O. Box 2659
Madison, WI 53701-2659

SCREENING REQUIREMENTS

Does the jurisdiction require screening of pregnant women for hepatitis B infection or hepatitis B surface antigen (HBsAg)?

No

Does the jurisdiction specifically require reporting of positive HBsAg status in pregnant women?

No

COMPLETION OF HEPATITIS B VACCINATION SERIES

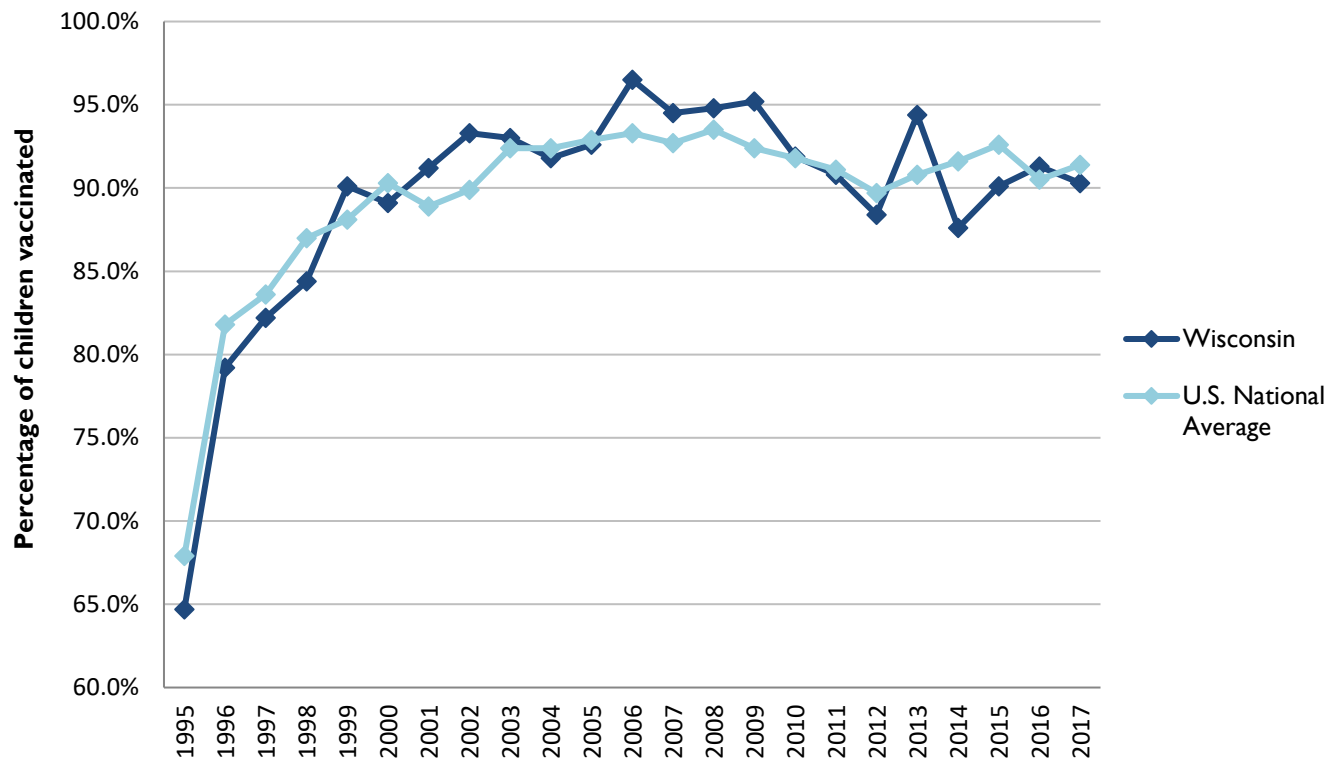
3 or more doses among children 19-35 months of age

	Percentage of children 19-35 months of age receiving 3 or more doses	Rank among other states	U.S. National Average	#1 ranked state and coverage
1995	64.7 ± 5.2%	30	67.9 ± 1.3%	88.5 ± 5.4% (South Carolina)
1996	79.2 ± 4.0%	36	81.8 ± 0.9%	95.8 ± 2.2% (South Carolina)
1997	82.2 ± 3.5%	36	83.6 ± 0.8%	91.6 ± 4.2% (New Jersey)
1998	84.4 ± 3.4%	39	87.0 ± 0.7%	94.1 ± 2.7% (South Carolina)
1999	90.1 ± 2.9%	23	88.1 ± 0.7%	94.0 ± 3.1% (Rhode Island)
2000	89.1 ± 3.2%	34	90.3 ± 0.6%	96.4 ± 1.9% (Rhode Island)
2001	91.2 ± 2.7%	13	88.9 ± 0.7%	95.8 ± 2.2% (Rhode Island)
2002	93.3 ± 2.2%	7	89.9 ± 0.7%	97.0 ± 2.0% (Rhode Island)
2003	93.0 ± 2.9%	20	92.4 ± 0.6%	98.2 ± 1.4% (Connecticut)
2004	91.8 ± 3.3%	34	92.4 ± 0.6%	96.8 ± 1.7% (Florida)
2005	92.6 ± 3.6%	26	92.9 ± 0.6%	97.9 ± 2.0% (Massachusetts)
2006	96.5 ± 2.0%	5	93.3 ± 0.6%	97.8 ± 1.6% (Rhode Island)
2007	94.5 ± 3.0%	17	92.7 ± 0.7%	98.6 ± 1.5% (New Hampshire)
2008	94.8 ± 3.9%	13	93.5 ± 0.7%	98.1 ± 1.6% (Connecticut)
2009	95.2 ± 2.7%	11	92.4 ± 0.7%	98.8 ± 1.5% (Rhode Island)
2010	91.9 ± 3.6%	25	91.8 ± 0.7%	98.3 ± 1.5% (North Dakota)
2011	90.8 ± 5.1%	28	91.1 ± 0.7%	97.1 ± 1.7% (Louisiana)
2012	88.4 ± 5.2%	37	89.7 ± 0.9%	96.3 ± 3.0% (Georgia)
2013	94.4 ± 3.1%	7	90.8 ± 1.0%	96.7 ± 2.3% (Rhode Island)
2014	87.6 ± 5.6%	46	91.6 ± 0.9%	97.6 ± 1.8% (Louisiana)
2015	90.1 ± 4.6%	45	92.6 ± 0.7%	97.3 ± 2.3% (Connecticut)
2016	91.3 ± 4.7%	28	90.5 ± 1.1%	97.4 ± 1.9% (Iowa)
2017	90.3 ± 4.2%	37	91.4 ± 0.9%	97.7 ± 1.6% (North Dakota)

Data compiled by the ALC from National Immunization Surveys, 1995-2017¹,
<https://www.cdc.gov/vaccines/imz-managers/coverage/childvaxview/data-reports/hepb/index.html>

GRAPH:

Percentage of Children 19-35 Months of Age Receiving 3 or More Doses of Hepatitis B Vaccine



Data compiled by the ALC from National Immunization Surveys, 1995-2017¹, <https://www.cdc.gov/vaccines/imz-managers/coverage/childvaxview/data-reports/hepb/index.html>

HEPATITIS B BIRTH DOSE VACCINATION COVERAGE

1 or more dose among infants within 3 days of birth

	Percentage of infants receiving			Rank among other states according to		
	1 dose within 1 day of birth*	1 dose within 2 days of birth	1 dose within 3 days of birth*	1 dose within 1 day of birth	1 dose within 2 days of birth	1 dose within 3 days of birth
2003		44.9 ± 5.6%		N/A	29	N/A
2004		47.5 ± 5.9%		N/A	30	N/A
2005		54.5 ± 6.4%		N/A	27	N/A
2006	43.5 ± 6.0%	51.1 ± 6.0%	53.6 ± 6.0%	30	29	29
2007	45.7 ± 7.8%	52.1 ± 7.8%	55.6 ± 7.8	30	33	32
2008	44.4 ± 7.6%	54.4 ± 7.6%	55.8 ± 7.6%	33	34	36
2009	50.0 ± 6.9%	58.9 ± 6.8%	63.1 ± 6.6%	32	32	28
2010	46.2 ± 6.7%	58.9 ± 7.0%	61.4 ± 6.9%	41	35	38
2011	52.6 ± 7.7%	68.9 ± 7.0%	74.5 ± 6.6%	38	26	17
2012	56.6 ± 7.2%	68.4 ± 6.8%	72.2 ± 6.5%	38	33	31
2013	61.7 ± 7.4%	77.4 ± 6.3%	80.5 ± 6.0%	33	14	13
2014	53.7 ± 8.6%	71.4 ± 8.0%	74.4 ± 7.1%	42	33	30
2015	59.1 ± 7.3%	70.4 ± 6.7%	73.1 ± 6.6%	38	30	28
2016	58.6 ± 7.3%	71.1 ± 6.7%	74.0 ± 6.5%	39	24	22
2017	63.9 ± 7.3%	75.6 ± 6.4%	80.9 ± 5.7%	36	20	6

*No data available 2003-2005

2017 U.S. NATIONAL AVERAGE

Day 1: 65.7 ± 1.6%
Day 2: 72.0 ± 1.6%
Day 3: 73.6 ± 1.6%

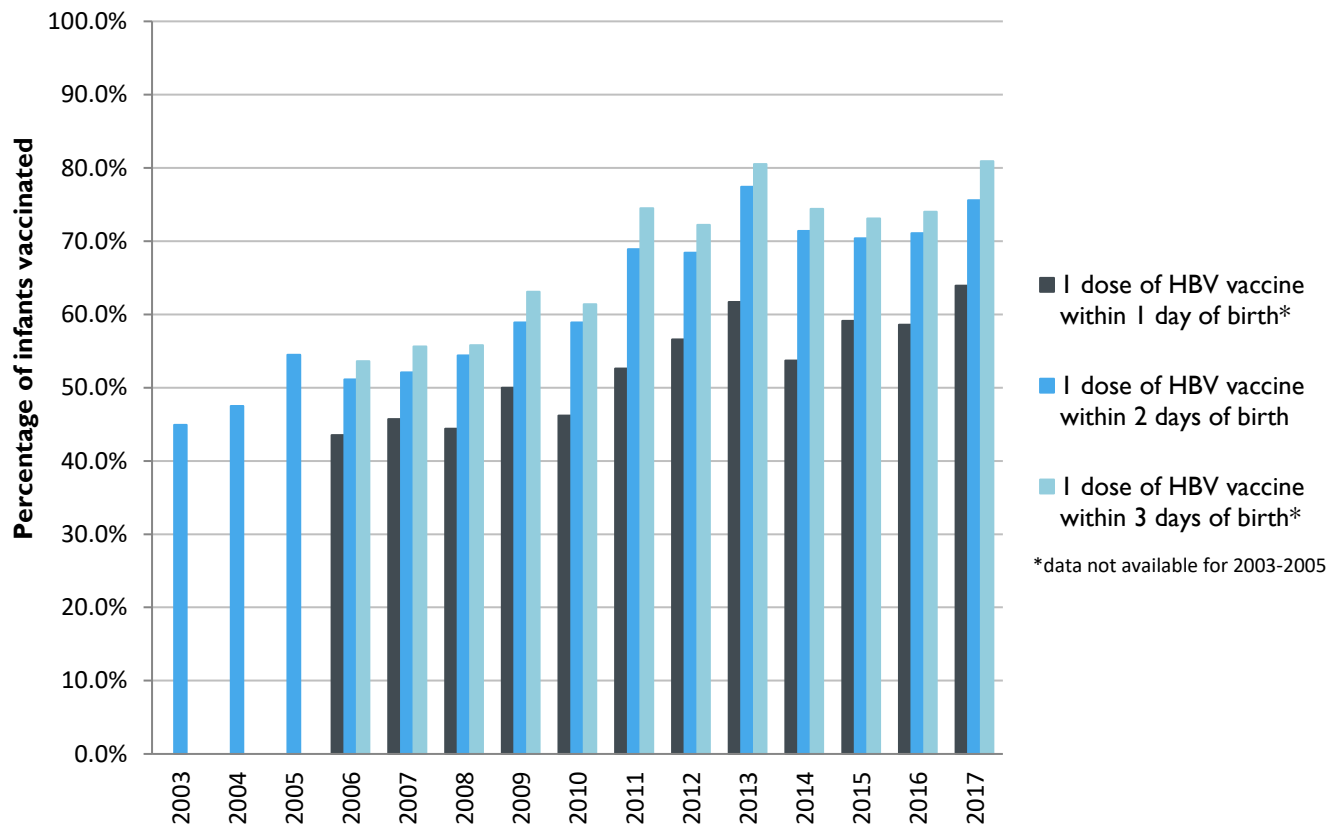
2017 HIGHEST BIRTH DOSE COVERAGE

Day 1: 82.0 ± 5.7% (Kentucky)
Day 2: 84.1 ± 5.6% (Kentucky)
Day 3: 84.1 ± 5.6% (Kentucky)

Data compiled by the ALC from National Immunization Surveys, 1995-2017¹,
<https://www.cdc.gov/vaccines/imz-managers/coverage/childvaxview/data-reports/hepb/index.html>

GRAPH:

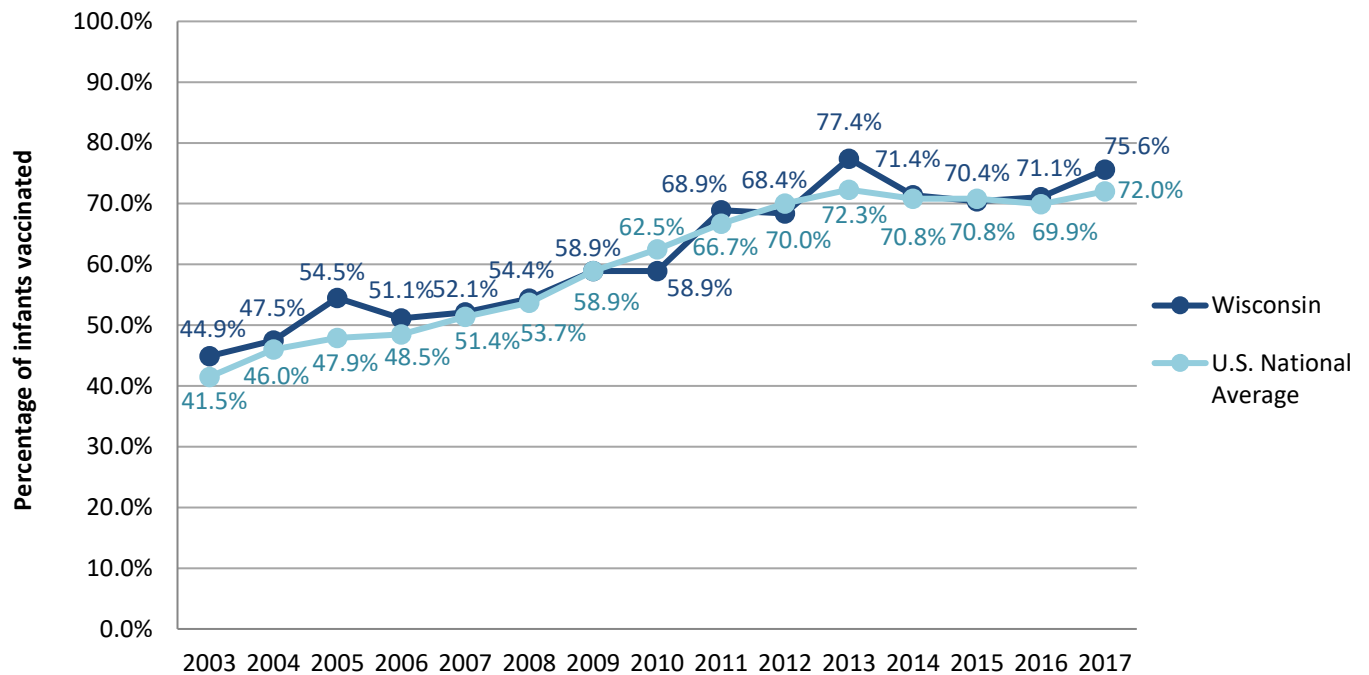
Estimated Vaccination Coverage for Hepatitis B Vaccine among Children from Birth to 3 Days of Age in Wisconsin



Data compiled by the ALC from National Immunization Surveys, 1995-2017¹,
<https://www.cdc.gov/vaccines/imz-managers/coverage/childvaxview/data-reports/hepb/index.html>

GRAPH:

Percentage of Infants Receiving 1 Dose of Hepatitis B Vaccine within 2 Days of Birth



Data compiled by the ALC from National Immunization Surveys, 1995-2017¹,
<https://www.cdc.gov/vaccines/imz-managers/coverage/childvaxview/data-reports/hepb/index.html>

¹ The data from the National Immunization Surveys constitute a composite of data from children who were 19-35 months of age at the time of the survey. Therefore, the data might reflect a different estimate from the states' own birth cohort data.