

# WEST VIRGINIA

## CONTACT THE STAFF

### COORDINATOR:

Rosemary Levenson, BSN, RN  
Email: Rosemary.S.Levenson@wv.gov  
Phone: 304-558-5358, ext. 1  
or 304-356-4036  
Fax: 304-558-6335

### ADDRESS:

Office of Epidemiology & Prevention Services  
Division of Infectious Disease Epidemiology  
350 Capitol Street, Room 125  
Charleston WV, 25301

## SCREENING REQUIREMENTS

Does the jurisdiction require screening of pregnant women for hepatitis B infection or hepatitis B surface antigen (HBsAg)?

**No**

Does the jurisdiction specifically require reporting of positive HBsAg status in pregnant women?

**No** (but WV Bureau for Public Health, Reportable Diseases, Events and Conditions, 64CSR7, sect. 3, states that perinatal hepatitis B is reportable by healthcare providers & facilities)

## COMPLETION OF HEPATITIS B VACCINATION SERIES

3 or more doses among children 19-35 months of age

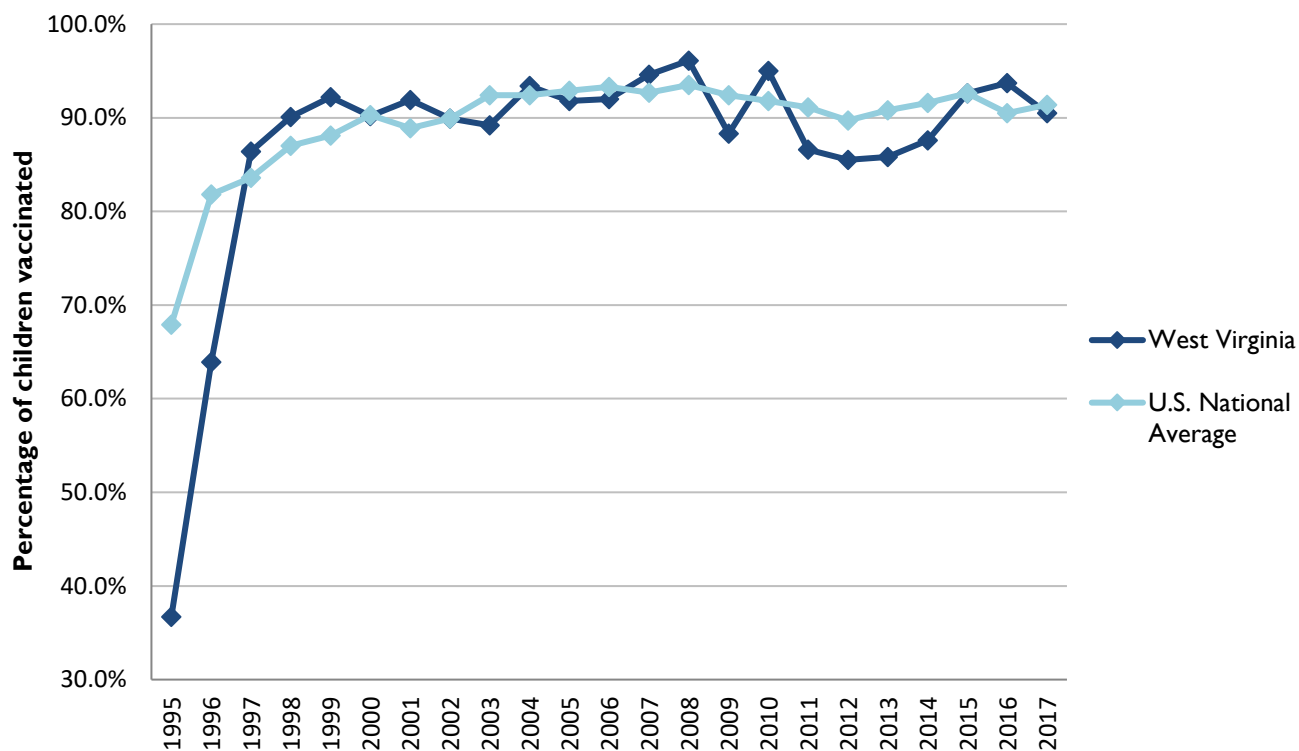
	Percentage of children 19-35 months of age receiving 3 or more doses	Rank among other states	U.S. National Average	#1 ranked state and coverage
1995	36.7 ± 6.6%	49	67.9 ± 1.3%	88.5 ± 5.4% (South Carolina)
1996	63.9 ± 6.3%	50	81.8 ± 0.9%	95.8 ± 2.2% (South Carolina)
1997	86.4 ± 4.0%	17	83.6 ± 0.8%	91.6 ± 4.2% (New Jersey)
1998	90.1 ± 3.7%	7	87.0 ± 0.7%	94.1 ± 2.7% (South Carolina)
1999	92.2 ± 3.3%	8	88.1 ± 0.7%	94.0 ± 3.1% (Rhode Island)
2000	90.2 ± 4.1%	28	90.3 ± 0.6%	96.4 ± 1.9% (Rhode Island)
2001	91.9 ± 3.4%	7	88.9 ± 0.7%	95.8 ± 2.2% (Rhode Island)
2002	89.9 ± 4.9%	32	89.9 ± 0.7%	97.0 ± 2.0% (Rhode Island)
2003	89.2 ± 5.6%	46	92.4 ± 0.6%	98.2 ± 1.4% (Connecticut)
2004	93.4 ± 4.6%	25	92.4 ± 0.6%	96.8 ± 1.7% (Florida)
2005	91.8 ± 4.9%	31	92.9 ± 0.6%	97.9 ± 2.0% (Massachusetts)
2006	92.0 ± 4.7%	36	93.3 ± 0.6%	97.8 ± 1.6% (Rhode Island)
2007	94.6 ± 2.7%	16	92.7 ± 0.7%	98.6 ± 1.5% (New Hampshire)
2008	96.1 ± 2.3%	4	93.5 ± 0.7%	98.1 ± 1.6% (Connecticut)
2009	88.3 ± 5.7%	46	92.4 ± 0.7%	98.8 ± 1.5% (Rhode Island)
2010	95.0 ± 2.8%	10	91.8 ± 0.7%	98.3 ± 1.5% (North Dakota)
2011	86.6 ± 4.5%	46	91.1 ± 0.7%	97.1 ± 1.7% (Louisiana)
2012	85.5 ± 6.0%	47	89.7 ± 0.9%	96.3 ± 3.0% (Georgia)
2013	85.8 ± 5.9%	49	90.8 ± 1.0%	96.7 ± 2.3% (Rhode Island)
2014	87.6 ± 5.5%	47	91.6 ± 0.9%	97.6 ± 1.8% (Louisiana)
2015	92.6 ± 4.5%	27	92.6 ± 0.7%	97.3 ± 2.3% (Connecticut)
2016	93.7 ± 3.4%	18	90.5 ± 1.1%	97.4 ± 1.9% (Iowa)
2017	90.5 ± 4.0%	33	91.4 ± 0.9%	97.7 ± 1.6% (North Dakota)

Data compiled by the ALC from National Immunization Surveys, 1995-2017<sup>1</sup>,

<https://www.cdc.gov/vaccines/imz-managers/coverage/childvaxview/data-reports/hepb/index.html>

## GRAPH:

Percentage of Children 19-35 Months of Age Receiving 3 or More Doses of Hepatitis B Vaccine



Data compiled by the ALC from National Immunization Surveys, 1995-2017<sup>1</sup>, <https://www.cdc.gov/vaccines/imz-managers/coverage/childvaxview/data-reports/hepb/index.html>

## HEPATITIS B BIRTH DOSE VACCINATION COVERAGE

1 or more dose among infants within 3 days of birth

	Percentage of infants receiving			Rank among other states according to		
	1 dose within 1 day of birth*	1 dose within 2 days of birth	1 dose within 3 days of birth*	1 dose within 1 day of birth	1 dose within 2 days of birth	1 dose within 3 days of birth
2003		28.4 ± 7.1%		N/A	40	N/A
2004		38.5 ± 7.2%		N/A	37	N/A
2005		36.1 ± 7.2%		N/A	37	N/A
2006	35.5 ± 7.1%	47.1 ± 7.5%	49.6 ± 7.5%	37	36	35
2007	41.1 ± 6.6%	51.3 ± 6.8%	52.5 ± 6.8%	36	35	35
2008	42.1 ± 7.1%	50.9 ± 7.2%	55.3 ± 7.2%	36	37	37
2009	45.3 ± 8.1%	51.2 ± 8.1%	53.7 ± 8.2%	35	40	37
2010	57.0 ± 6.3%	62.7 ± 6.1%	66.7 ± 5.9%	29	31	27
2011	49.1 ± 6.3%	57.2 ± 6.2%	60.7 ± 6.1%	44	45	44
2012	59.1 ± 7.7%	69.9 ± 7.1%	74.4 ± 6.6%	34	30	24
2013	58.2 ± 8.8%	72.2 ± 8.0%	73.9 ± 7.9%	39	32	33
2014	63.1 ± 7.7%	73.0 ± 7.2%	75.0 ± 7.0%	34	28	27
2015	60.5 ± 7.7%	67.2 ± 7.4%	68.3 ± 7.4%	36	38	40
2016	65.0 ± 6.9%	70.2 ± 6.7%	72.8 ± 6.5%	24	31	27
2017	59.1 ± 6.7%	67.2 ± 6.4%	69.7 ± 6.2%	43	42	42

\*No data available 2003-2005

### 2017 U.S. NATIONAL AVERAGE

Day 1: 65.7 ± 1.6%  
Day 2: 72.0 ± 1.6%  
Day 3: 73.6 ± 1.6%

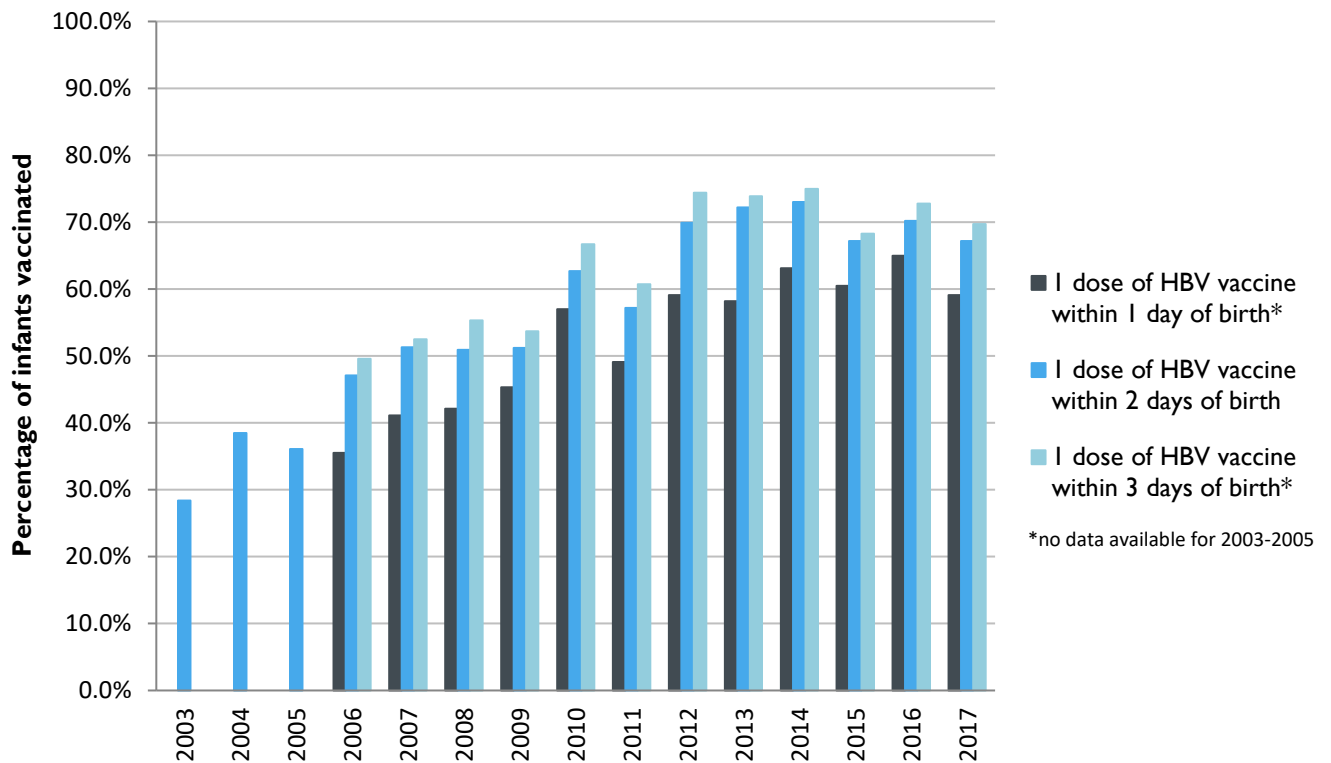
### 2017 HIGHEST BIRTH DOSE COVERAGE

Day 1: 82.0 ± 5.7% (Kentucky)  
Day 2: 84.1 ± 5.6% (Kentucky)  
Day 3: 84.1 ± 5.6% (Kentucky)

Data compiled by the ALC from National Immunization Surveys, 1995-2017<sup>1</sup>,  
<https://www.cdc.gov/vaccines/imz-managers/coverage/childvaxview/data-reports/hepb/index.html>

## GRAPH:

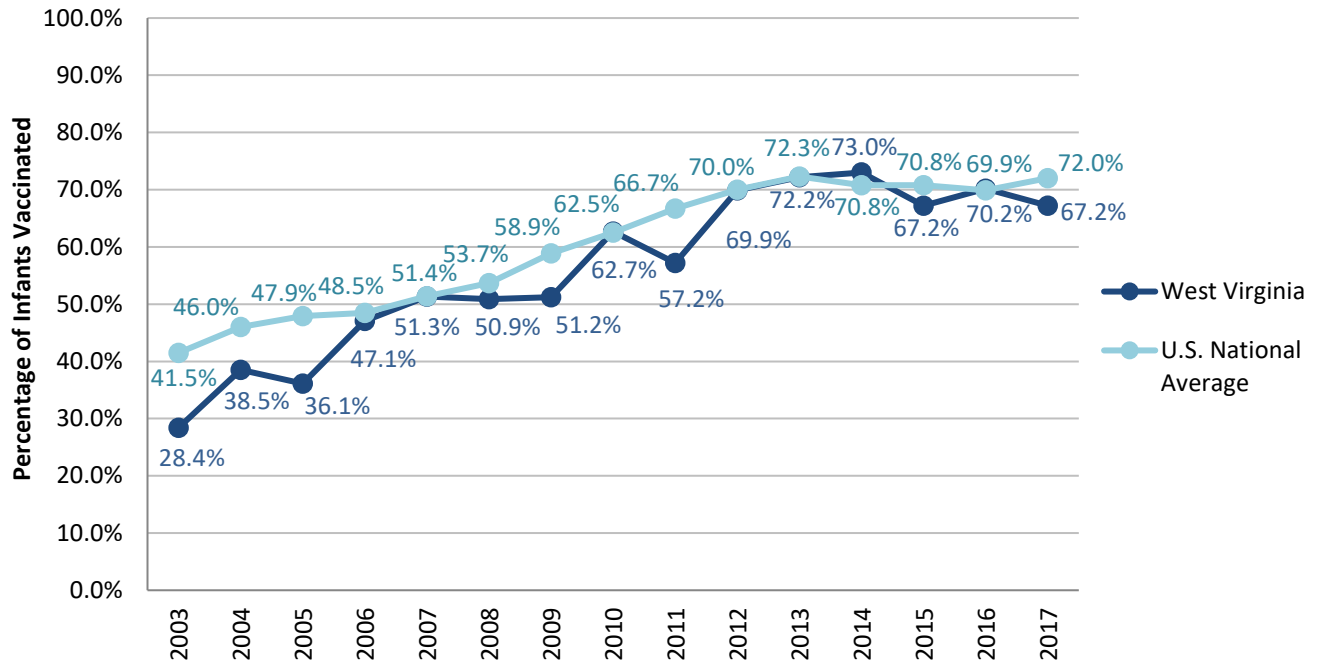
Estimated Vaccination Coverage for Hepatitis B Vaccine among Children from Birth to 3 Days of Age in West Virginia



Data compiled by the ALC from National Immunization Surveys, 1995-2017<sup>1</sup>,  
<https://www.cdc.gov/vaccines/imz-managers/coverage/childvaxview/data-reports/hepb/index.html>

## GRAPH:

### Percentage of Infants Receiving 1 Dose of Hepatitis B Vaccine within 2 Days of Birth



Data compiled by the ALC from National Immunization Surveys, 1995-2017<sup>1</sup>,  
<https://www.cdc.gov/vaccines/imz-managers/coverage/childvaxview/data-reports/hepb/index.html>

<sup>1</sup> The data from the National Immunization Surveys constitute a composite of data from children who were 19-35 months of age at the time of the survey. Therefore, the data might reflect a different estimate from the states' own birth cohort data.