

VIRGINIA

CONTACT THE STAFF

COORDINATOR:

Ann Basner, MPH
Email: ann.basner@vdh.virginia.gov
Phone: 804-864-8071
Fax: 804-864-8089

ADDRESS:

Division of Immunization
Virginia State Department of Health
109 Governor Street, Room 314 West
P.O. Box 2448
Richmond, VA 23218

SCREENING REQUIREMENTS

Does the jurisdiction require screening of pregnant women for hepatitis B infection or hepatitis B surface antigen (HBsAg)?

Yes - 12 Va. Admin. Code § 5-90-130

Does the jurisdiction specifically require reporting of positive HBsAg status in pregnant women?

No

COMPLETION OF HEPATITIS B VACCINATION SERIES

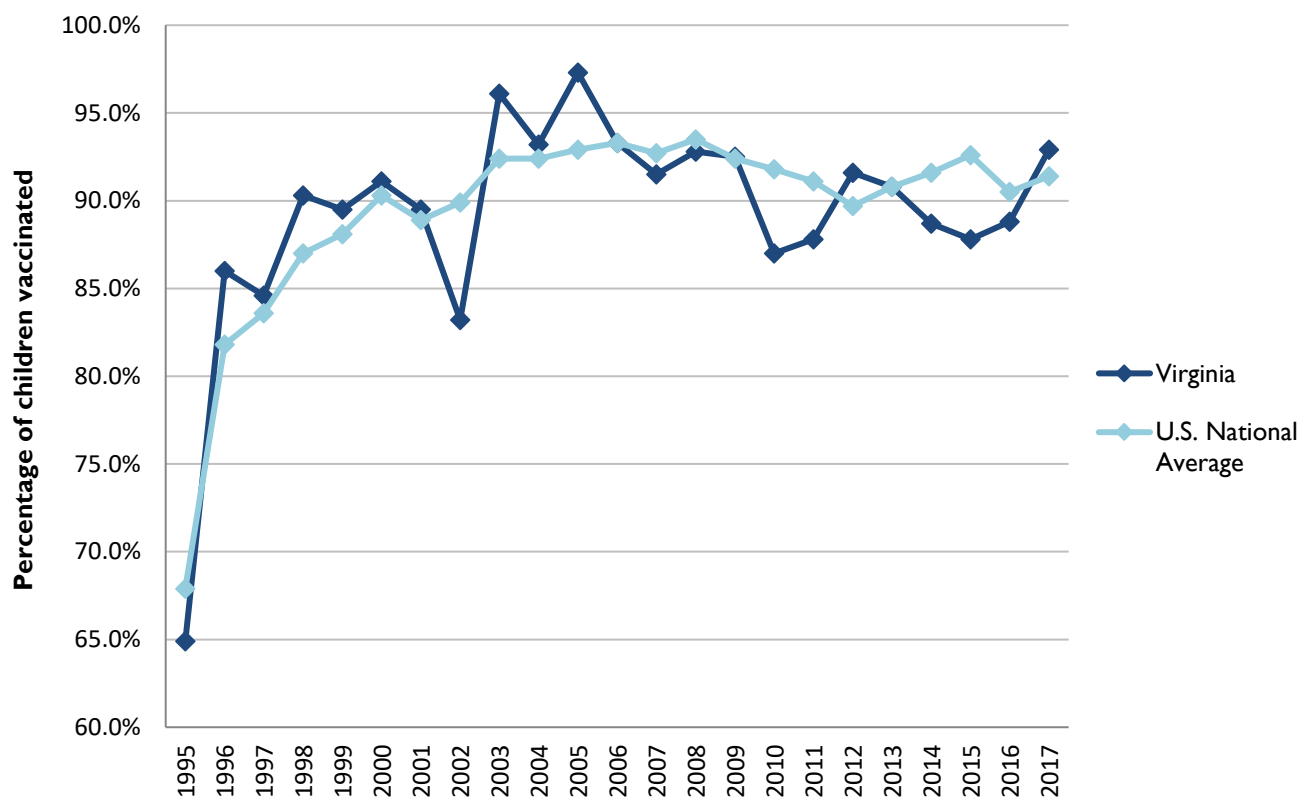
3 or more doses among children 19-35 months of age

	Percentage of children 19-35 months of age receiving 3 or more doses	Rank among other states	U.S. National Average	#1 ranked state and coverage
1995	64.9 ± 7.5%	29	67.9 ± 1.3%	88.5 ± 5.4% (South Carolina)
1996	86.0 ± 4.6%	11	81.8 ± 0.9%	95.8 ± 2.2% (South Carolina)
1997	84.6 ± 4.7%	26	83.6 ± 0.8%	91.6 ± 4.2% (New Jersey)
1998	90.3 ± 3.9%	6	87.0 ± 0.7%	94.1 ± 2.7% (South Carolina)
1999	89.5 ± 4.3%	26	88.1 ± 0.7%	94.0 ± 3.1% (Rhode Island)
2000	91.1 ± 3.8%	18	90.3 ± 0.6%	96.4 ± 1.9% (Rhode Island)
2001	89.5 ± 4.8%	23	88.9 ± 0.7%	95.8 ± 2.2% (Rhode Island)
2002	83.2 ± 5.4%	50	89.9 ± 0.7%	97.0 ± 2.0% (Rhode Island)
2003	96.1 ± 2.7%	5	92.4 ± 0.6%	98.2 ± 1.4% (Connecticut)
2004	93.2 ± 3.8%	26	92.4 ± 0.6%	96.8 ± 1.7% (Florida)
2005	97.3 ± 1.8%	2	92.9 ± 0.6%	97.9 ± 2.0% (Massachusetts)
2006	93.3 ± 3.4%	27	93.3 ± 0.6%	97.8 ± 1.6% (Rhode Island)
2007	91.5 ± 3.5%	42	92.7 ± 0.7%	98.6 ± 1.5% (New Hampshire)
2008	92.8 ± 4.9%	32	93.5 ± 0.7%	98.1 ± 1.6% (Connecticut)
2009	92.5 ± 4.2%	25	92.4 ± 0.7%	98.8 ± 1.5% (Rhode Island)
2010	87.0 ± 4.9%	47	91.8 ± 0.7%	98.3 ± 1.5% (North Dakota)
2011	87.8 ± 5.2%	43	91.1 ± 0.7%	97.1 ± 1.7% (Louisiana)
2012	91.6 ± 4.6%	16	89.7 ± 0.9%	96.3 ± 3.0% (Georgia)
2013	90.8 ± 5.6%	27	90.8 ± 1.0%	96.7 ± 2.3% (Rhode Island)
2014	88.7 ± 6.4%	44	91.6 ± 0.9%	97.6 ± 1.8% (Louisiana)
2015	87.8 ± 5.7%	51	92.6 ± 0.7%	97.3 ± 2.3% (Connecticut)
2016	88.8 ± 5.8%	42	90.5 ± 1.1%	97.4 ± 1.9% (Iowa)
2017	92.9 ± 4.6%	16	91.4 ± 0.9%	97.7 ± 1.6% (North Dakota)

Data compiled by the ALC from National Immunization Surveys, 1995-2017¹,
<https://www.cdc.gov/vaccines/imz-managers/coverage/childvaxview/data-reports/hepb/index.html>

GRAPH:

Percentage of Children 19-35 Months of Age Receiving 3 or More Doses of Hepatitis B Vaccine



Data compiled by the ALC from National Immunization Surveys, 1995-2017¹, <https://www.cdc.gov/vaccines/imz-managers/coverage/childvaxview/data-reports/hepb/index.html>

HEPATITIS B BIRTH DOSE VACCINATION COVERAGE

1 or more dose among infants within 3 days of birth

	Percentage of infants receiving			Rank among other states according to		
	1 dose within 1 day of birth*	1 dose within 2 days of birth	1 dose within 3 days of birth*	1 dose within 1 day of birth	1 dose within 2 days of birth	1 dose within 3 days of birth
2003		33.3 ± 6.8%		N/A	37	N/A
2004		38.0 ± 7.6%		N/A	38	N/A
2005		36.9 ± 7.8%		N/A	36	N/A
2006	21.2 ± 5.5%	26.1 ± 5.9%	28.0 ± 6.0%	46	46	45
2007	29.2 ± 6.4%	32.8 ± 6.5%	34.8 ± 6.5%	42	44	42
2008	37.1 ± 8.6%	41.2 ± 8.7%	42.2 ± 8.7%	38	40	41
2009	50.1 ± 8.1%	59.2 ± 8.0%	60.8 ± 7.9%	31	31	33
2010	47.0 ± 6.7%	55.6 ± 6.8%	58.3 ± 6.7%	40	42	42
2011	50.2 ± 7.9%	59.7 ± 8.1%	64.4 ± 7.9%	43	47	40
2012	62.3 ± 7.9%	69.3 ± 7.5%	71.4 ± 7.4%	32	31	32
2013	NA	NA	NA	51	51	51
2014	62.6 ± 9.5%	72.3 ± 8.9%	73.9 ± 8.8%	35	29	31
2015	56.9 ± 8.5%	64.1 ± 8.3%	67.3 ± 8.1%	41	45	43
2016	63.4 ± 8.8%	66.6 ± 8.7%	69.6 ± 8.3%	31	38	37
2017	62.2 ± 9.0%	69.9 ± 8.8%	71.0 ± 8.7%	40	39	39

*No data available 2003-2005

2017 U.S. NATIONAL AVERAGE

Day 1: 65.7 ± 1.6%
Day 2: 72.0 ± 1.6%
Day 3: 73.6 ± 1.6%

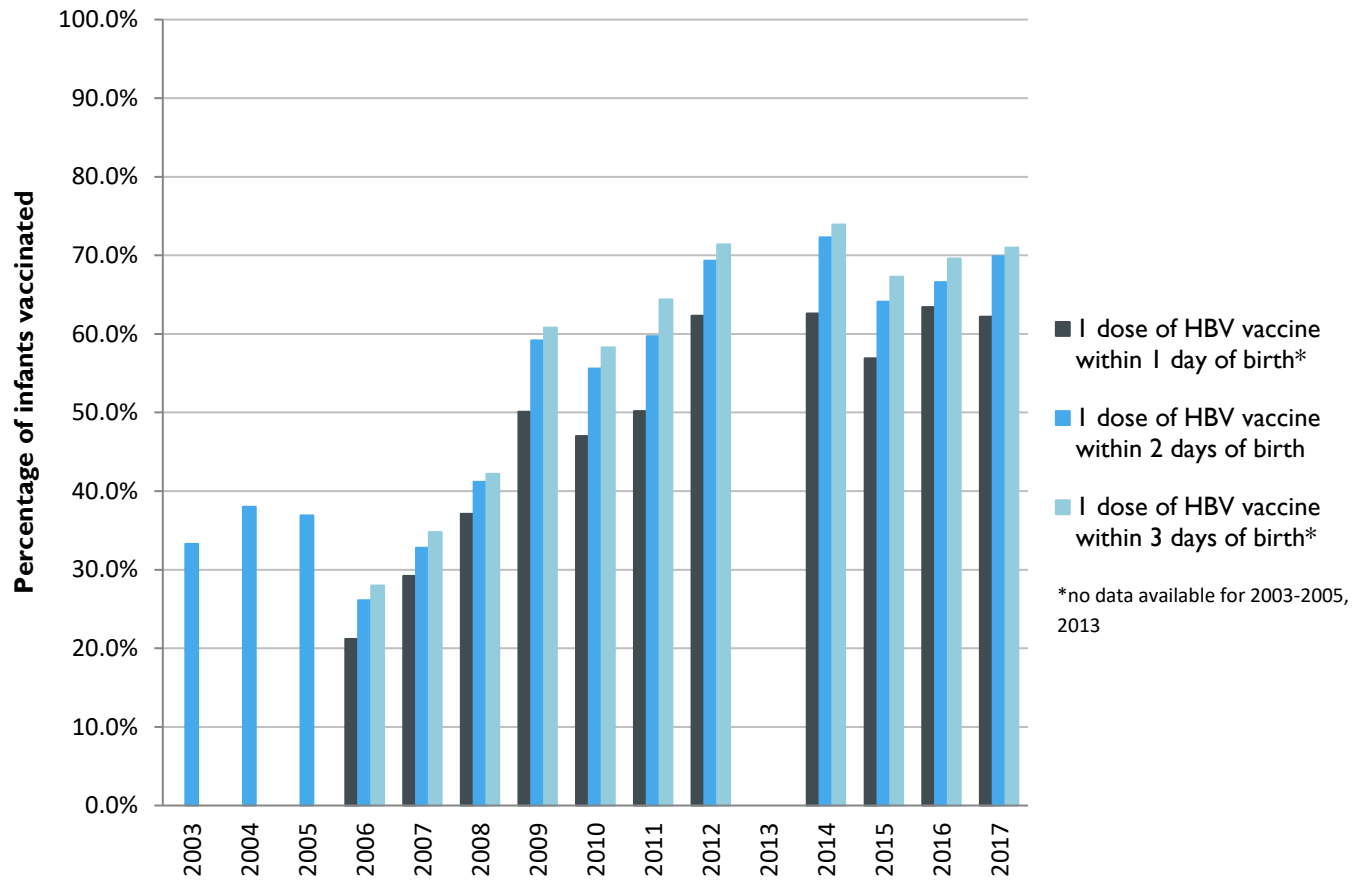
2017 HIGHEST BIRTH DOSE COVERAGE

Day 1: 82.0 ± 5.7% (Kentucky)
Day 2: 84.1 ± 5.6% (Kentucky)
Day 3: 84.1 ± 5.6% (Kentucky)

Data compiled by the ALC from National Immunization Surveys, 1995-2017¹,
<https://www.cdc.gov/vaccines/imz-managers/coverage/childvaxview/data-reports/hepb/index.html>

GRAPH:

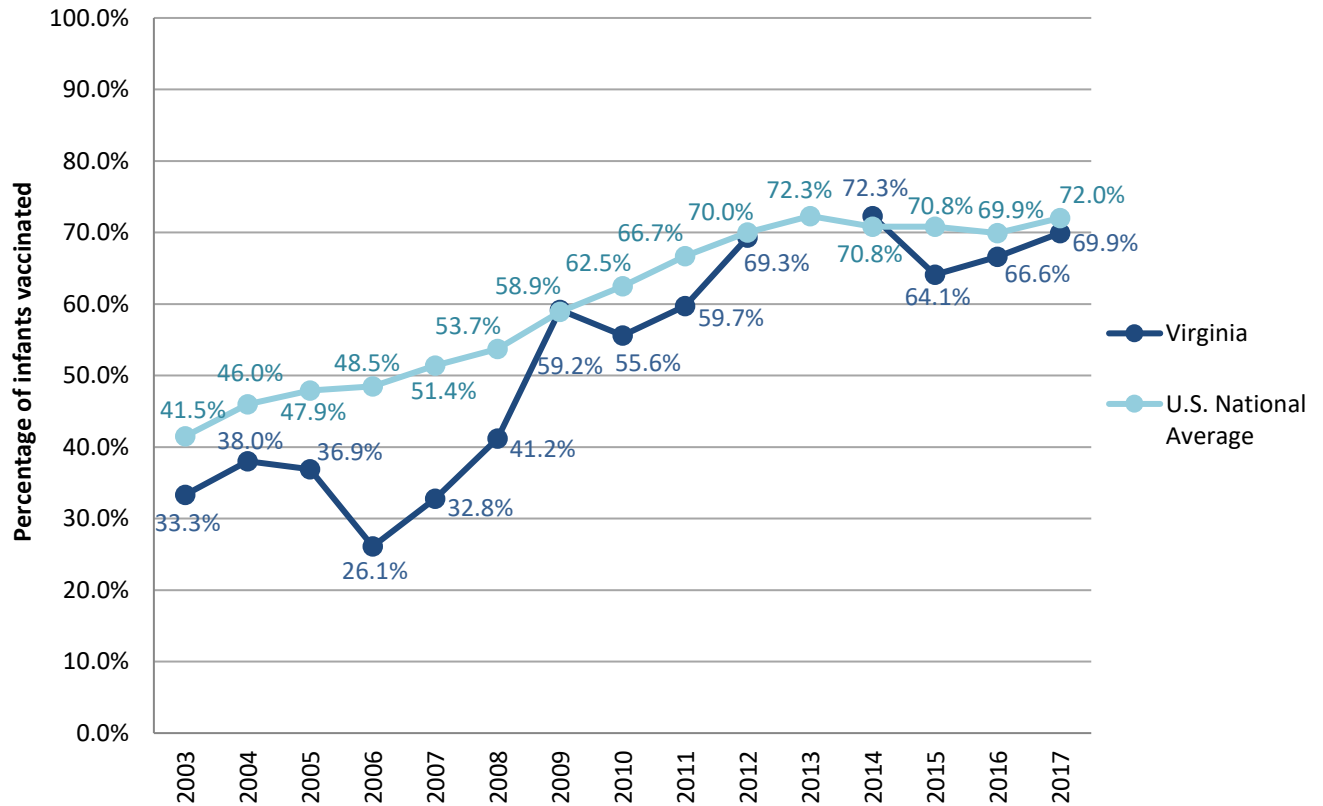
Estimated Vaccination Coverage for Hepatitis B Vaccine among Children from Birth to 3 Days of Age in Virginia



Data compiled by the ALC from National Immunization Surveys, 1995-2017¹,
<https://www.cdc.gov/vaccines/imz-managers/coverage/childvaxview/data-reports/hepb/index.html>

GRAPH:

Percentage of Infants Receiving 1 Dose of Hepatitis B Vaccine within 2 Days of Birth



Data compiled by the ALC from National Immunization Surveys, 1995-2017¹,
<https://www.cdc.gov/vaccines/imz-managers/coverage/childvaxview/data-reports/hepb/index.html>

¹ The data from the National Immunization Surveys constitute a composite of data from children who were 19-35 months of age at the time of the survey. Therefore, the data might reflect a different estimate from the states' own birth cohort data.