

VERMONT

CONTACT THE STAFF

COORDINATOR:

Veronica Fialkowski, MPH
Email: veronica.fialkowski@vermont.gov
Phone: 802-863-7240

ADDRESS:

Division of Health Surveillance
108 Cherry St., Suite 304
Burlington, VT 05401

SCREENING REQUIREMENTS

Does the jurisdiction require screening of pregnant women for hepatitis B infection or hepatitis B surface antigen (HBsAg)?

No

Does the jurisdiction specifically require reporting of positive HBsAg status in pregnant women?

Yes - VT Code R. 13-140-007

COMPLETION OF HEPATITIS B VACCINATION SERIES

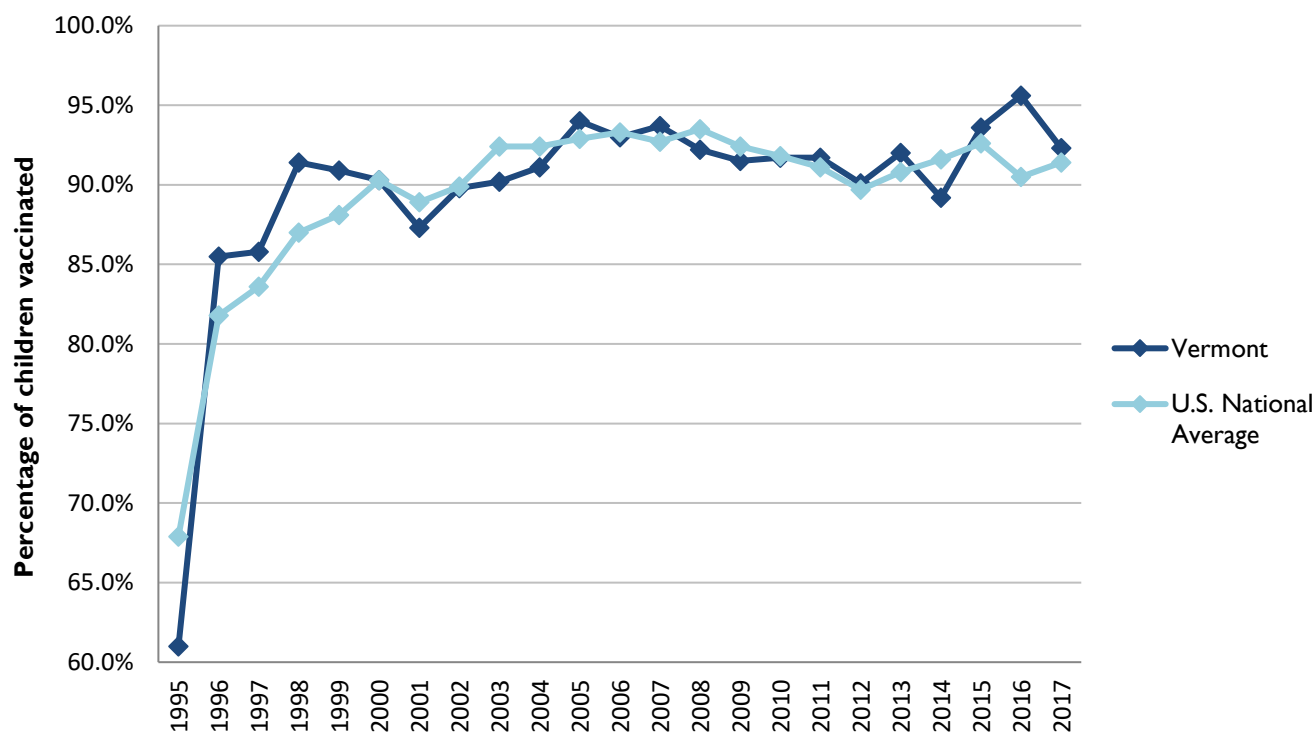
3 or more doses among children 19-35 months of age

	Percentage of children 19-35 months of age receiving 3 or more doses	Rank among other states	U.S. National Average	#1 ranked state and coverage
1995	61.0 ± 6.8%	33	67.9 ± 1.3%	88.5 ± 5.4% (South Carolina)
1996	85.5 ± 4.0%	14	81.8 ± 0.9%	95.8 ± 2.2% (South Carolina)
1997	85.8 ± 3.8%	20	83.6 ± 0.8%	91.6 ± 4.2% (New Jersey)
1998	91.4 ± 3.3%	2	87.0 ± 0.7%	94.1 ± 2.7% (South Carolina)
1999	90.9 ± 3.3%	16	88.1 ± 0.7%	94.0 ± 3.1% (Rhode Island)
2000	90.3 ± 4.1%	27	90.3 ± 0.6%	96.4 ± 1.9% (Rhode Island)
2001	87.3 ± 4.0%	33	88.9 ± 0.7%	95.8 ± 2.2% (Rhode Island)
2002	89.8 ± 3.7%	34	89.9 ± 0.7%	97.0 ± 2.0% (Rhode Island)
2003	90.2 ± 3.7%	42	92.4 ± 0.6%	98.2 ± 1.4% (Connecticut)
2004	91.1 ± 3.7%	39	92.4 ± 0.6%	96.8 ± 1.7% (Florida)
2005	94.0 ± 3.5%	18	92.9 ± 0.6%	97.9 ± 2.0% (Massachusetts)
2006	93.0 ± 4.0%	30	93.3 ± 0.6%	97.8 ± 1.6% (Rhode Island)
2007	93.7 ± 5.1%	25	92.7 ± 0.7%	98.6 ± 1.5% (New Hampshire)
2008	92.2 ± 3.5%	39	93.5 ± 0.7%	98.1 ± 1.6% (Connecticut)
2009	91.5 ± 3.6%	32	92.4 ± 0.7%	98.8 ± 1.5% (Rhode Island)
2010	91.7 ± 3.7%	29	91.8 ± 0.7%	98.3 ± 1.5% (North Dakota)
2011	91.7 ± 3.4%	20	91.1 ± 0.7%	97.1 ± 1.7% (Louisiana)
2012	90.1 ± 4.2%	27	89.7 ± 0.9%	96.3 ± 3.0% (Georgia)
2013	92.0 ± 3.6%	21	90.8 ± 1.0%	96.7 ± 2.3% (Rhode Island)
2014	89.2 ± 4.5%	43	91.6 ± 0.9%	97.6 ± 1.8% (Louisiana)
2015	93.6 ± 3.3%	21	92.6 ± 0.7%	97.3 ± 2.3% (Connecticut)
2016	95.6 ± 2.6%	3	90.5 ± 1.1%	97.4 ± 1.9% (Iowa)
2017	92.3 ± 3.5%	22	91.4 ± 0.9%	97.7 ± 1.6% (North Dakota)

Data compiled by the ALC from National Immunization Surveys, 1995-2017¹,
<https://www.cdc.gov/vaccines/imz-managers/coverage/childvaxview/data-reports/hepb/index.html>

GRAPH:

Percentage of Children 19-35 Months of Age Receiving 3 or More Doses of Hepatitis B Vaccine



Data compiled by the ALC from National Immunization Surveys, 1995-2017¹,
<https://www.cdc.gov/vaccines/imz-managers/coverage/childvaxview/data-reports/hepb/index.html>

HEPATITIS B BIRTH DOSE VACCINATION COVERAGE

1 or more dose among infants within 3 days of birth

	Percentage of infants receiving			Rank among other states according to		
	1 dose within 1 day of birth*	1 dose within 2 days of birth	1 dose within 3 days of birth*	1 dose within 1 day of birth	1 dose within 2 days of birth	1 dose within 3 days of birth
2003		35.0 ± 6.5%		N/A	35	N/A
2004		37.1 ± 6.7%		N/A	40	N/A
2005		24.4 ± 7.6%		N/A	47	N/A
2006	14.4 ± 5.8%	19.7 ± 6.4%	19.9 ± 6.4%	49	49	49
2007	15.9 ± 6.9%	25.2 ± 8.2%	25.6 ± 8.2%	51	48	48
2008	11.5 ± 5.2%	17.4 ± 6.0%	19.1 ± 6.3%	51	51	51
2009	12.4 ± 3.9%	21.8 ± 5.0%	22.8 ± 5.1%	51	51	50
2010	12.0 ± 4.5%	17.9 ± 5.5%	21.4 ± 5.9%	51	51	51
2011	11.5 ± 4.2%	20.6 ± 5.6%	23.1 ± 5.8%	51	51	51
2012	21.7 ± 5.5%	33.2 ± 6.6%	36.0 ± 6.7%	51	51	51
2013	22.3 ± 5.8%	38.1 ± 6.6%	44.8 ± 6.8%	51	51	51
2014	25.4 ± 6.3%	43.6 ± 7.5%	48.4 ± 7.5%	51	51	51
2015	31.4 ± 6.3%	45.9 ± 6.7%	49.4 ± 6.7%	51	51	51
2016	28.5 ± 6.0%	46.8 ± 6.5%	48.8 ± 6.5%	51	51	51
2017	36.6 ± 6.8%	49.0 ± 7.2%	52.4 ± 7.2%	49	50	50

*No data available 2003-2005

2017 U.S. NATIONAL AVERAGE

Day 1: 65.7 ± 1.6%
Day 2: 72.0 ± 1.6%
Day 3: 73.6 ± 1.6%

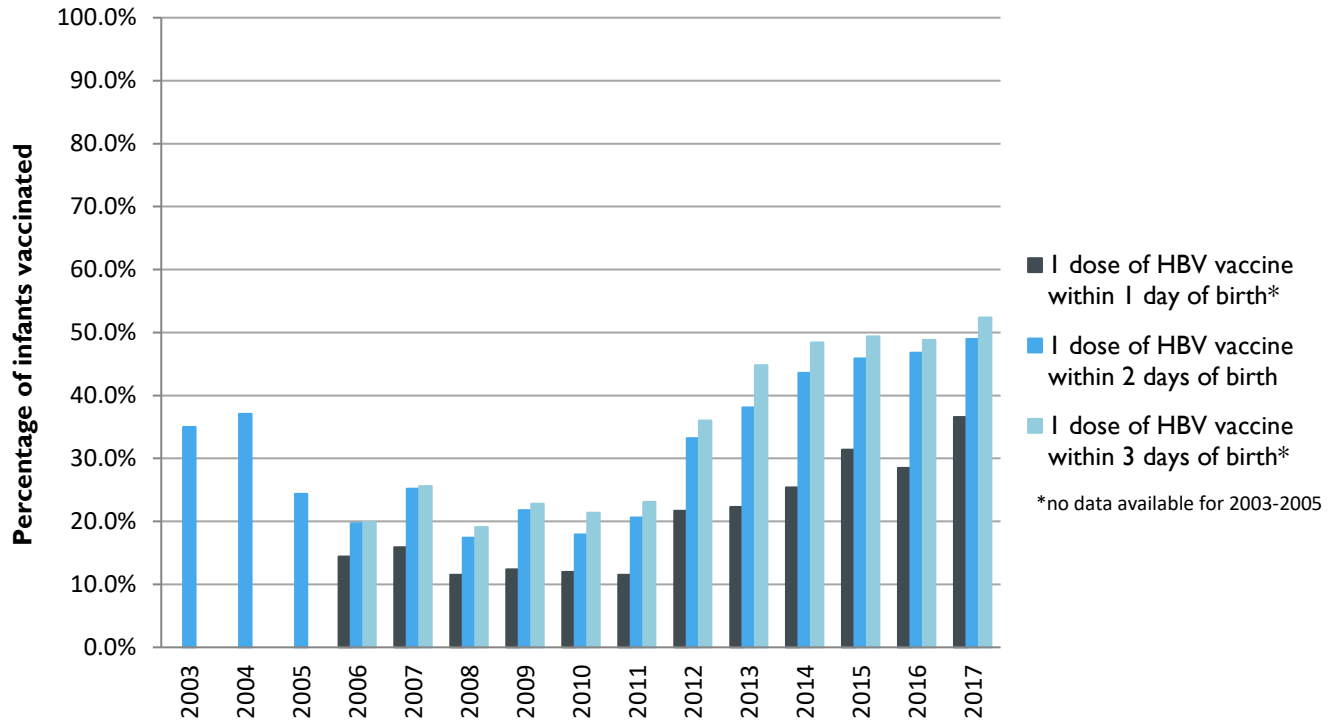
2017 HIGHEST BIRTH DOSE COVERAGE

Day 1: 82.0 ± 5.7% (Kentucky)
Day 2: 84.1 ± 5.6% (Kentucky)
Day 3: 84.1 ± 5.6% (Kentucky)

Data compiled by the ALC from National Immunization Surveys, 1995-2017¹,
<https://www.cdc.gov/vaccines/imz-managers/coverage/childvaxview/data-reports/hepb/index.html>

GRAPH:

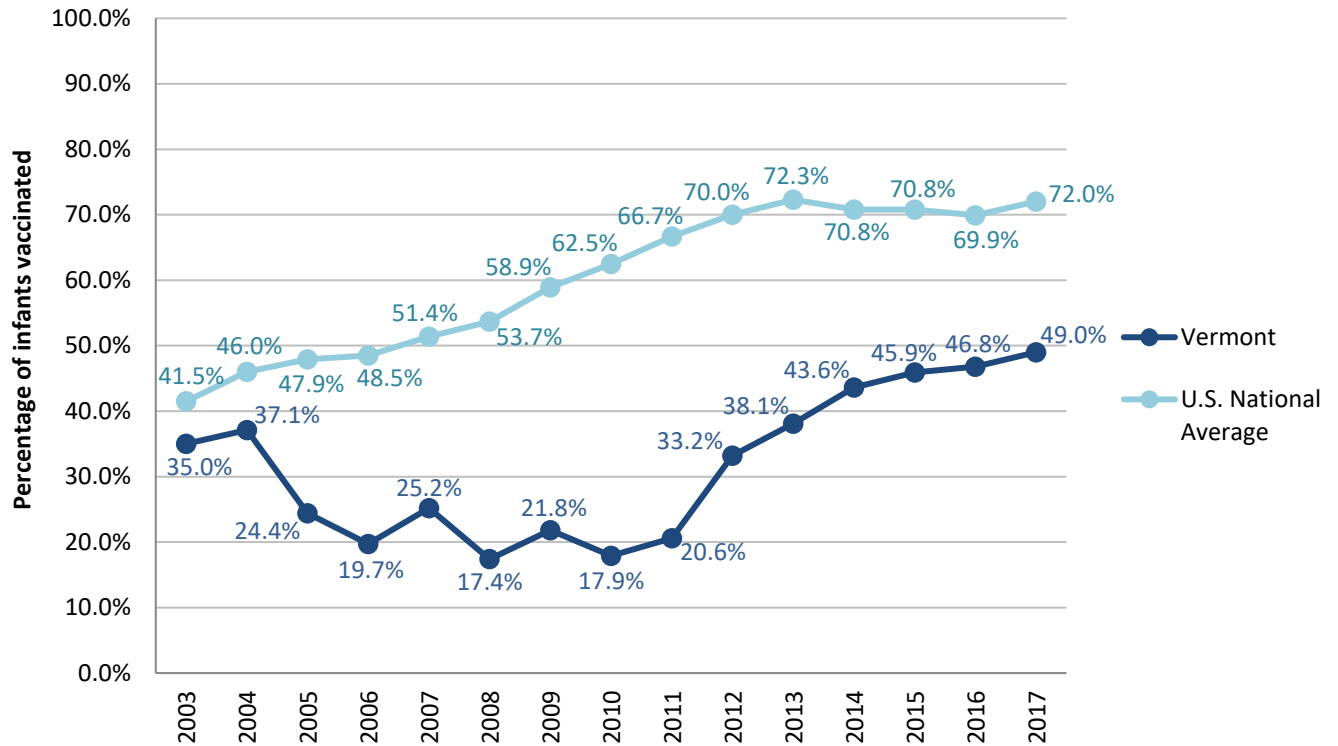
Estimated Vaccination Coverage for Hepatitis B Vaccine among Children from Birth to 3 Days of Age in Vermont



Data compiled by the ALC from National Immunization Surveys, 1995-2017¹,
<https://www.cdc.gov/vaccines/imz-managers/coverage/childvaxview/data-reports/hepb/index.html>

GRAPH:

Percentage of Infants Receiving 1 Dose of Hepatitis B Vaccine within 2 Days of Birth



Data compiled by the ALC from National Immunization Surveys, 1995-2017¹,
<https://www.cdc.gov/vaccines/imz-managers/coverage/childvaxview/data-reports/hepb/index.html>

¹ The data from the National Immunization Surveys constitute a composite of data from children who were 19-35 months of age at the time of the survey. Therefore, the data might reflect a different estimate from the states' own birth cohort data.