

UTAH

CONTACT THE STAFF

COORDINATOR:

Cindy Wynette, BS, CHES, Adult Immunization
Coordinator
Email: cwynette@utah.gov
Phone: 801-538-6690
Fax: 801-538-9440

ADDRESS:

Utah Department of Health
PO Box 142012
Salt Lake City, UT 84114-2012

SCREENING REQUIREMENTS

Does the jurisdiction require screening of pregnant women for hepatitis B infection or hepatitis B surface antigen (HBsAg)?

Yes - Utah Admin. Code R386-702-9

Does the jurisdiction specifically require reporting of positive HBsAg status in pregnant women?

Yes - Utah Admin. Code R386-702-9

COMPLETION OF HEPATITIS B VACCINATION SERIES

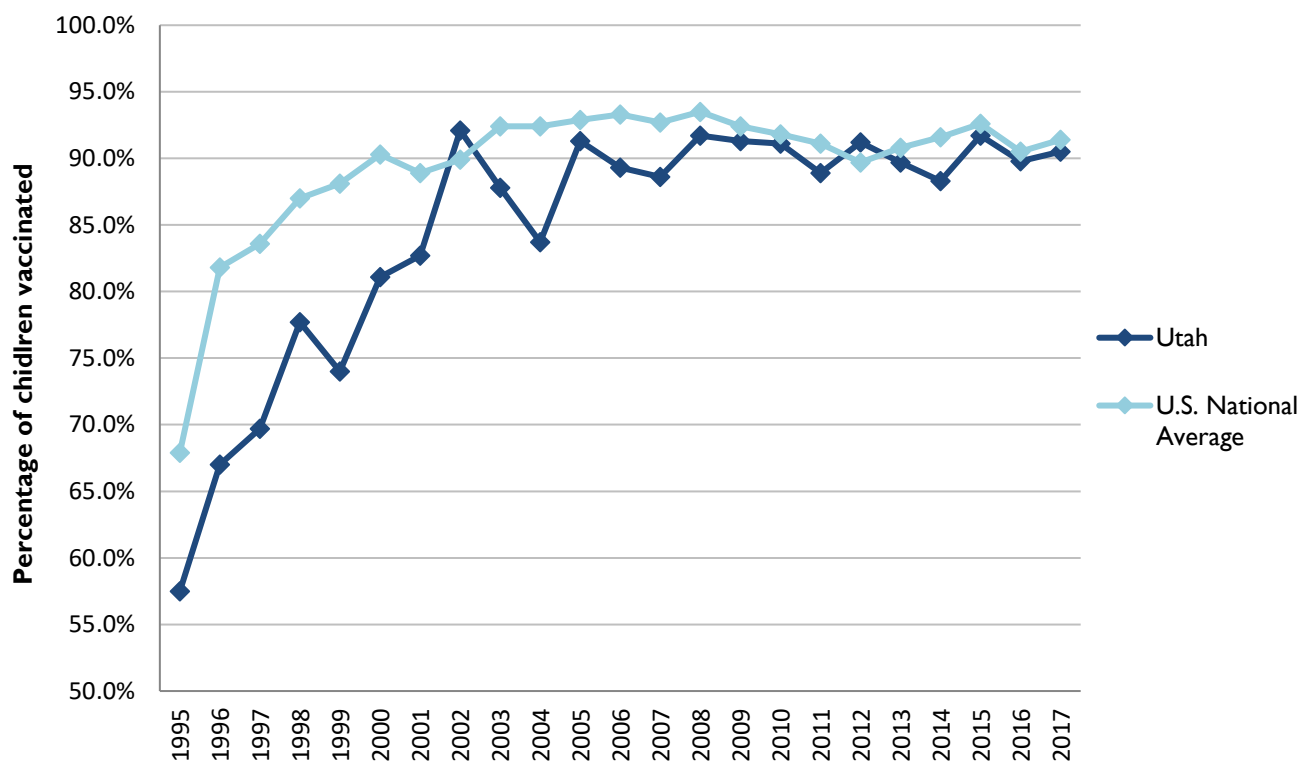
3 or more doses among children 19-35 months of age

	Percentage of children 19-35 months of age receiving 3 or more doses	Rank among other states	U.S. National Average	#1 ranked state and coverage
1995	57.5 ± 6.6%	38	67.9 ± 1.3%	88.5 ± 5.4% (South Carolina)
1996	67.0 ± 6.6%	49	81.8 ± 0.9%	95.8 ± 2.2% (South Carolina)
1997	69.7 ± 5.7%	51	83.6 ± 0.8%	91.6 ± 4.2% (New Jersey)
1998	77.7 ± 5.3%	51	87.0 ± 0.7%	94.1 ± 2.7% (South Carolina)
1999	74.0 ± 5.8%	51	88.1 ± 0.7%	94.0 ± 3.1% (Rhode Island)
2000	81.1 ± 5.0%	51	90.3 ± 0.6%	96.4 ± 1.9% (Rhode Island)
2001	82.7 ± 4.7%	47	88.9 ± 0.7%	95.8 ± 2.2% (Rhode Island)
2002	92.1 ± 3.4%	18	89.9 ± 0.7%	97.0 ± 2.0% (Rhode Island)
2003	87.8 ± 4.9%	50	92.4 ± 0.6%	98.2 ± 1.4% (Connecticut)
2004	83.7 ± 4.8%	51	92.4 ± 0.6%	96.8 ± 1.7% (Florida)
2005	91.3 ± 4.8%	33	92.9 ± 0.6%	97.9 ± 2.0% (Massachusetts)
2006	89.3 ± 4.5%	48	93.3 ± 0.6%	97.8 ± 1.6% (Rhode Island)
2007	88.6 ± 4.8%	47	92.7 ± 0.7%	98.6 ± 1.5% (New Hampshire)
2008	91.7 ± 4.5%	41	93.5 ± 0.7%	98.1 ± 1.6% (Connecticut)
2009	91.3 ± 4.2%	33	92.4 ± 0.7%	98.8 ± 1.5% (Rhode Island)
2010	91.1 ± 3.6%	33	91.8 ± 0.7%	98.3 ± 1.5% (North Dakota)
2011	88.9 ± 4.5%	40	91.1 ± 0.7%	97.1 ± 1.7% (Louisiana)
2012	91.2 ± 4.7%	19	89.7 ± 0.9%	96.3 ± 3.0% (Georgia)
2013	89.7 ± 4.3%	34	90.8 ± 1.0%	96.7 ± 2.3% (Rhode Island)
2014	88.3 ± 5.5%	45	91.6 ± 0.9%	97.6 ± 1.8% (Louisiana)
2015	91.7 ± 4.3%	34	92.6 ± 0.7%	97.3 ± 2.3% (Connecticut)
2016	89.8 ± 4.7%	36	90.5 ± 1.1%	97.4 ± 1.9% (Iowa)
2017	90.5 ± 4.0%	34	91.4 ± 0.9%	97.7 ± 1.6% (North Dakota)

Data compiled by the ALC from National Immunization Surveys, 1995-2017¹,
<https://www.cdc.gov/vaccines/imz-managers/coverage/childvaxview/data-reports/hepb/index.html>

GRAPH:

Percentage of Children 19-35 Months of Age Receiving 3 or More Doses of Hepatitis B Vaccine



Data compiled by the ALC from National Immunization Surveys, 1995-2017¹,
<https://www.cdc.gov/vaccines/imz-managers/coverage/childvaxview/data-reports/hepb/index.html>

HEPATITIS B BIRTH DOSE VACCINATION COVERAGE

1 or more dose among infants within 3 days of birth

	Percentage of infants receiving			Rank among other states according to		
	1 dose within 1 day of birth*	1 dose within 2 days of birth	1 dose within 3 days of birth*	1 dose within 1 day of birth	1 dose within 2 days of birth	1 dose within 3 days of birth
2003		58.1 ± 7.2%		N/A	15	N/A
2004		64.5 ± 6.1%		N/A	15	N/A
2005		72.3 ± 7.7%		N/A	7	N/A
2006	70.6 ± 6.7%	72.8 ± 6.5%	73.6 ± 6.4%	1	5	7
2007	74.4 ± 6.3%	77.4 ± 6.1%	77.8 ± 6.1%	1	2	3
2008	76.2 ± 6.9%	77.7 ± 6.7%	78.6 ± 6.7%	1	2	2
2009	74.2 ± 6.6%	77.8 ± 6.1%	77.8 ± 6.1%	1	2	3
2010	78.1 ± 5.7%	78.9 ± 5.6%	79.8 ± 5.6%	4	6	6
2011	70.4 ± 7.2%	74.1 ± 6.8%	74.2 ± 6.8%	11	16	18
2012	76.1 ± 6.6%	78.1 ± 6.4%	78.6 ± 6.3%	5	11	13
2013	77.4 ± 6.4%	80.9 ± 5.5%	81.2 ± 5.5%	2	5	12
2014	75.3 ± 7.3%	78.1 ± 6.8%	79.2 ± 6.7%	8	18	16
2015	75.9 ± 6.7%	79.6 ± 6.0%	79.6 ± 6.0%	5	7	11
2016	76.2 ± 6.4%	79.0 ± 6.2%	80.8 ± 5.8%	3	3	3
2017	74.7 ± 6.3%	78.2 ± 6.1%	78.2 ± 6.1%	10	10	16

*No data available 2003-2005

2017 U.S. NATIONAL AVERAGE

Day 1: 65.7 ± 1.6%
Day 2: 72.0 ± 1.6%
Day 3: 73.6 ± 1.6%

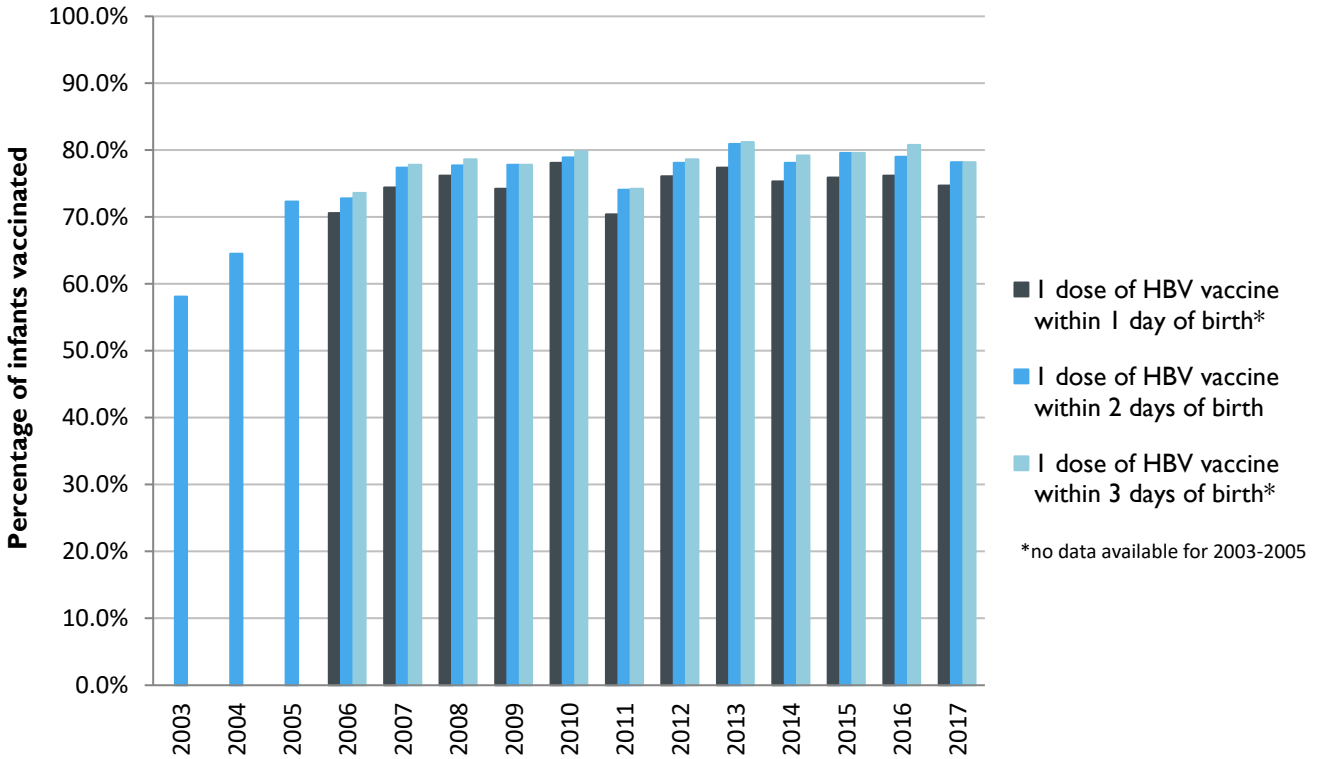
2017 HIGHEST BIRTH DOSE COVERAGE

Day 1: 82.0 ± 5.7% (Kentucky)
Day 2: 84.1 ± 5.6% (Kentucky)
Day 3: 84.1 ± 5.6% (Kentucky)

Data compiled by the ALC from National Immunization Surveys, 1995-2017¹,
<https://www.cdc.gov/vaccines/imz-managers/coverage/childvaxview/data-reports/hepb/index.html>

GRAPH:

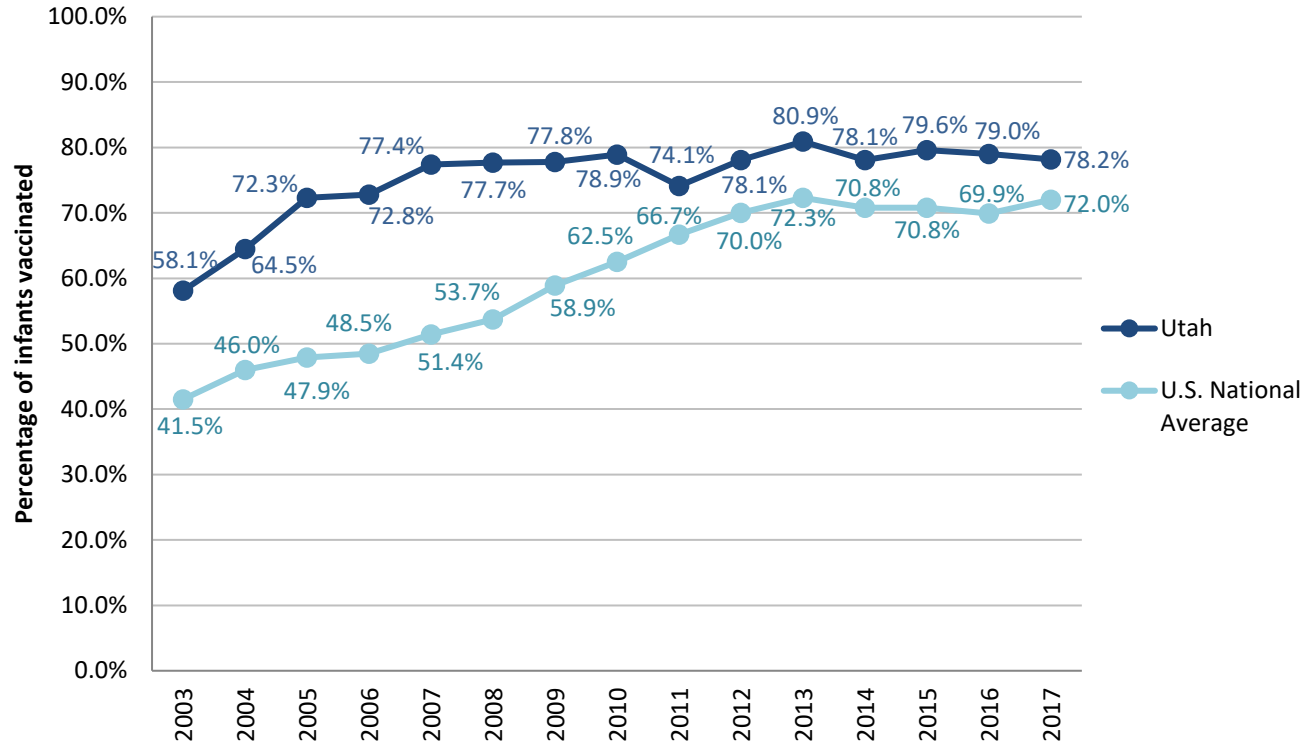
Estimated Vaccination Coverage for Hepatitis B Vaccine among Children from Birth to 3 Days of Age in Utah



Data compiled by the ALC from National Immunization Surveys, 1995-2017¹,
<https://www.cdc.gov/vaccines/imz-managers/coverage/childvaxview/data-reports/hepb/index.html>

GRAPH:

Percentage of Infants Receiving 1 Dose of Hepatitis B Vaccine within 2 Days of Birth



Data compiled by the ALC from National Immunization Surveys, 1995-2017¹,
<https://www.cdc.gov/vaccines/imz-managers/coverage/childvaxview/data-reports/hepb/index.html>

¹ The data from the National Immunization Surveys constitute a composite of data from children who were 19-35 months of age at the time of the survey. Therefore, the data might reflect a different estimate from the states' own birth cohort data.