

SOUTH DAKOTA

CONTACT THE STAFF

COORDINATOR:

Jodi Smith
Email: JodiM.Smith@state.sd.us
Phone: 605-773-2664
Fax: 605-773-5509 C

ADDRESS:

South Dakota Department of Health
Office of Disease Prevention
615 East 4th Street
Pierre, SD 57501-1700

SECONDARY CONTACT:

Tim Heath
Email: Tim.Heath@state.sd.us
Phone: 605-773-5323

SCREENING REQUIREMENTS

Does the jurisdiction require screening of pregnant women for hepatitis B infection or hepatitis B surface antigen (HBsAg)?

No

Does the jurisdiction specifically require reporting of positive HBsAg status in pregnant women?

No

COMPLETION OF HEPATITIS B VACCINATION SERIES

3 or more doses among children 19-35 months of age

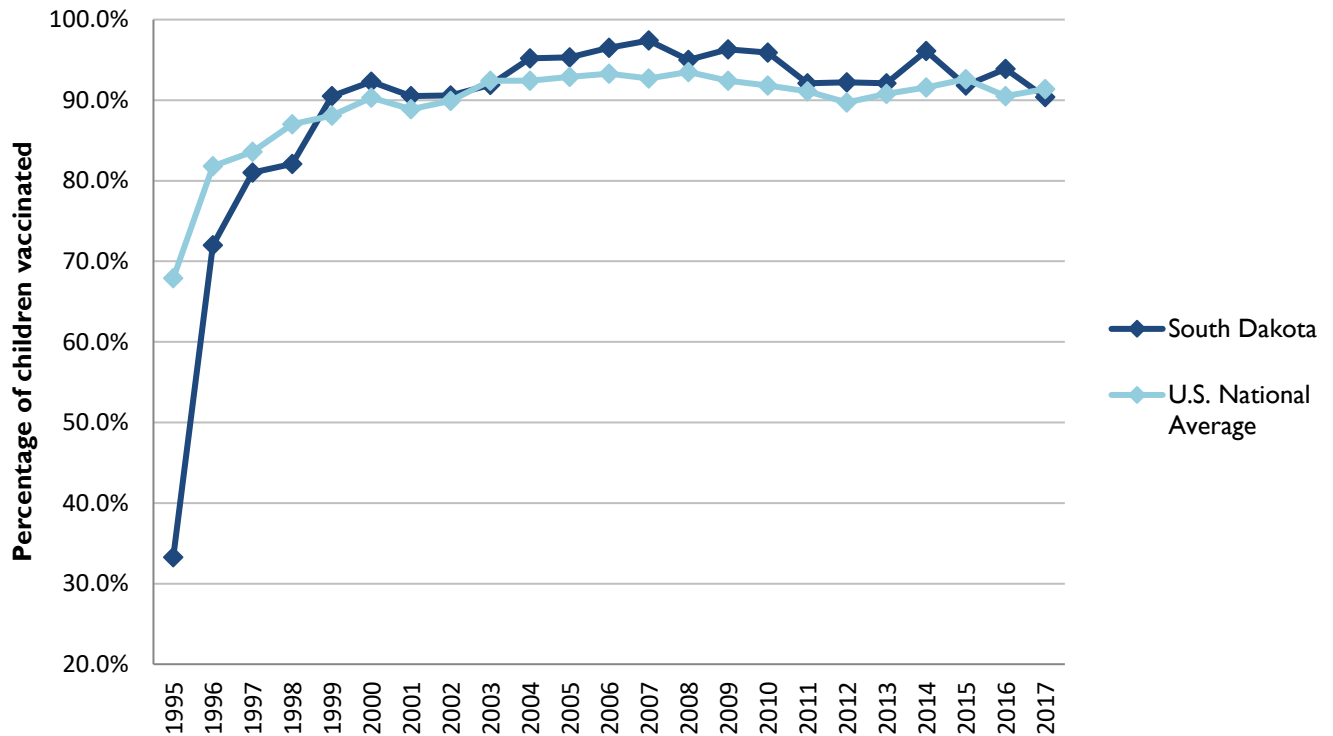
	Percentage of children 19-35 months of age receiving 3 or more doses	Rank among other states	U.S. National Average	#1 ranked state and coverage
1995	33.3 ± 6.6%	50	67.9 ± 1.3%	88.5 ± 5.4% (South Carolina)
1996	72.0 ± 6.2%	46	81.8 ± 0.9%	95.8 ± 2.2% (South Carolina)
1997	81.0 ± 4.9%	41	83.6 ± 0.8%	91.6 ± 4.2% (New Jersey)
1998	82.1 ± 5.1%	45	87.0 ± 0.7%	94.1 ± 2.7% (South Carolina)
1999	90.5 ± 3.7%	20	88.1 ± 0.7%	94.0 ± 3.1% (Rhode Island)
2000	92.3 ± 3.3%	14	90.3 ± 0.6%	96.4 ± 1.9% (Rhode Island)
2001	90.5 ± 4.0%	15	88.9 ± 0.7%	95.8 ± 2.2% (Rhode Island)
2002	90.6 ± 4.5%	27	89.9 ± 0.7%	97.0 ± 2.0% (Rhode Island)
2003	91.9 ± 4.1%	29	92.4 ± 0.6%	98.2 ± 1.4% (Connecticut)
2004	95.2 ± 2.8%	6	92.4 ± 0.6%	96.8 ± 1.7% (Florida)
2005	95.3 ± 2.8%	8	92.9 ± 0.6%	97.9 ± 2.0% (Massachusetts)
2006	96.5 ± 2.5%	4	93.3 ± 0.6%	97.8 ± 1.6% (Rhode Island)
2007	97.4 ± 1.9%	5	92.7 ± 0.7%	98.6 ± 1.5% (New Hampshire)
2008	95.0 ± 3.5%	11	93.5 ± 0.7%	98.1 ± 1.6% (Connecticut)
2009	96.3 ± 2.6%	5	92.4 ± 0.7%	98.8 ± 1.5% (Rhode Island)
2010	95.9 ± 2.4%	6	91.8 ± 0.7%	98.3 ± 1.5% (North Dakota)
2011	92.1 ± 5.5%	17	91.1 ± 0.7%	97.1 ± 1.7% (Louisiana)
2012	92.2 ± 3.5%	13	89.7 ± 0.9%	96.3 ± 3.0% (Georgia)
2013	92.1 ± 4.6%	19	90.8 ± 1.0%	96.7 ± 2.3% (Rhode Island)
2014	96.1 ± 3.4%	3	91.6 ± 0.9%	97.6 ± 1.8% (Louisiana)
2015	91.8 ± 4.8%	32	92.6 ± 0.7%	97.3 ± 2.3% (Connecticut)

2016	93.9 ± 3.4%	17	90.5 ± 1.1%	97.4 ± 1.9% (Iowa)
2017	90.4 ± 4.6%	35	91.4 ± 0.9%	97.7 ± 1.6% (North Dakota)

Data compiled by the ALC from National Immunization Surveys, 1995-2017¹,
<https://www.cdc.gov/vaccines/imz-managers/coverage/childvaxview/data-reports/hepb/index.html>

GRAPH:

Percentage of Children 19-35 Months of Age Receiving 3 or More Doses of Hepatitis B Vaccine



Data compiled by the ALC from National Immunization Surveys, 1995-2017¹,
<https://www.cdc.gov/vaccines/imz-managers/coverage/childvaxview/data-reports/hepb/index.html>

HEPATITIS B BIRTH DOSE VACCINATION COVERAGE

1 or more dose among infants within 3 days of birth

	Percentage of infants receiving			Rank among other states according to		
	1 dose within 1 day of birth*	1 dose within 2 days of birth	1 dose within 3 days of birth*	1 dose within 1 day of birth	1 dose within 2 days of birth	1 dose within 3 days of birth
2003		36.2 ± 7.0%		N/A	34	N/A
2004		29.9 ± 6.9%		N/A	43	N/A
2005		34.8 ± 6.9%		N/A	38	N/A
2006	26.5 ± 6.1%	31.3 ± 6.4%	32.6 ± 6.4%	42	41	41
2007	25.8 ± 6.5%	31.9 ± 7.0%	31.9 ± 7.0%	45	46	46
2008	31.4 ± 6.3%	38.8 ± 6.5%	40.5 ± 6.6%	46	44	44
2009	45.5 ± 7.2%	52.8 ± 7.2%	53.0 ± 7.2%	34	38	38
2010	54.3 ± 7.0%	61.2 ± 6.9%	62.4 ± 6.8%	32	33	35
2011	N/A	N/A	70.9 ± 9.6%	N/A	N/A	27
2012	66.9 ± 6.6%	76.1 ± 5.6%	76.6 ± 5.6%	21	20	21
2013	61.2 ± 8.3%	69.5 ± 7.9%	70.9 ± 7.8%	35	36	38
2014	72.4 ± 8.2%	79.5 ± 7.3%	80.0 ± 7.2%	16	10	10

2015	65.8 ± 7.6%	69.8 ± 7.4%	71.4 ± 7.3%	25	32	33
2016	69.5 ± 6.6%	72.1 ± 6.5%	74.4 ± 6.3%	17	21	21
2017	75.3 ± 6.5%	78.9 ± 6.2%	80.2 ± 5.9%	8	9	10

*No data available 2003-2005

2017 U.S. NATIONAL AVERAGE

Day 1: 65.7 ± 1.6%
 Day 2: 72.0 ± 1.6%
 Day 3: 73.6 ± 1.6%

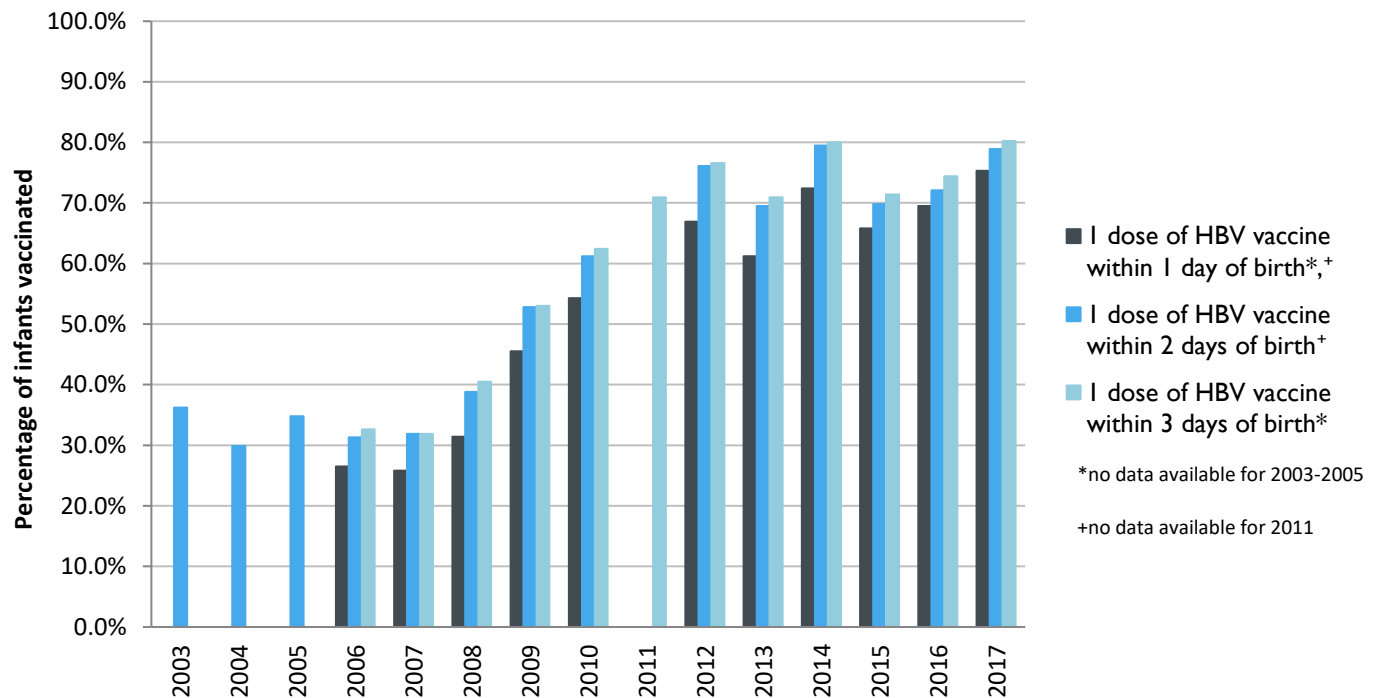
2017 HIGHEST BIRTH DOSE COVERAGE

Day 1: 82.0 ± 5.7% (Kentucky)
 Day 2: 84.1 ± 5.6% (Kentucky)
 Day 3: 84.1 ± 5.6% (Kentucky)

Data compiled by the ALC from National Immunization Surveys, 1995-2017¹,
<https://www.cdc.gov/vaccines/imz-managers/coverage/childvaxview/data-reports/hepb/index.html>

GRAPH:

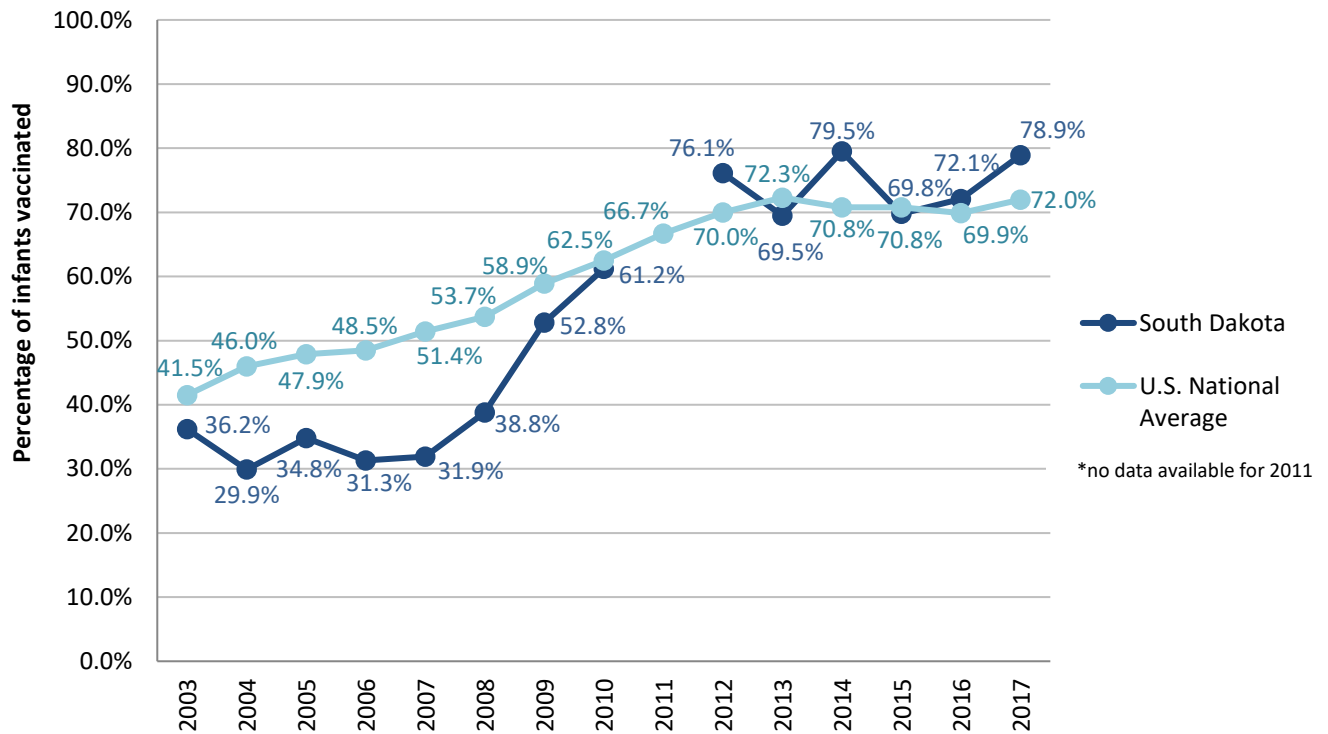
Estimated Vaccination Coverage for Hepatitis B Vaccine among Children from Birth to 3 Days of Age in South Dakota



Data compiled by the ALC from National Immunization Surveys, 1995-2017¹,
<https://www.cdc.gov/vaccines/imz-managers/coverage/childvaxview/data-reports/hepb/index.html>

GRAPH:

Percentage of Infants Receiving 1 Dose of Hepatitis B Vaccine within 2 Days of Birth



Data compiled by the ALC from National Immunization Surveys, 1995-2017¹,
<https://www.cdc.gov/vaccines/imz-managers/coverage/childvaxview/data-reports/hepb/index.html>

¹ The data from the National Immunization Surveys constitute a composite of data from children who were 19-35 months of age at the time of the survey. Therefore, the data might reflect a different estimate from the states' own birth cohort data.