

# SOUTH CAROLINA

## CONTACT THE STAFF

### COORDINATOR:

Cynthia Dibble  
Email: [dibblecm@dhec.sc.gov](mailto:dibblecm@dhec.sc.gov)  
Phone: 803-898-0692  
Fax: 803-898-0326

### ADDRESS:

Immunization Division  
SC Department of Health and Environmental  
Control  
2100 Bull Street  
Columbia, SC 29201

## SCREENING REQUIREMENTS

Does the jurisdiction require screening of pregnant women for hepatitis B infection or hepatitis B surface antigen (HBsAg)?

No

Does the jurisdiction specifically require reporting of positive HBsAg status in pregnant women?

Yes - SC Code § 44-29-10(A) and SC Code Regs. § 61-20 (since Jan. 2005)

## COMPLETION OF HEPATITIS B VACCINATION SERIES

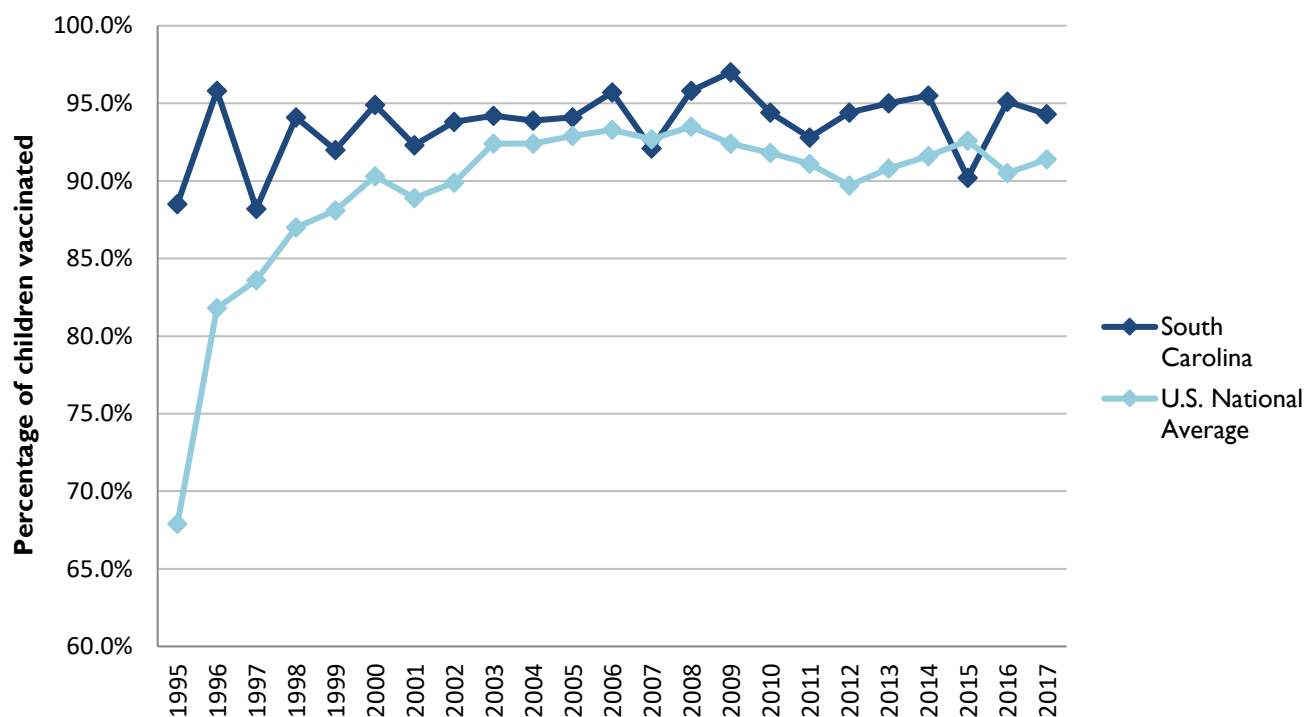
3 or more doses among children 19-35 months of age

	Percentage of children 19-35 months of age receiving 3 or more doses	Rank among other states	U.S. National Average	#1 ranked state and coverage
1995	88.5 ± 5.4%	1	67.9 ± 1.3%	88.5 ± 5.4% (South Carolina)
1996	95.8 ± 2.2%	1	81.8 ± 0.9%	95.8 ± 2.2% (South Carolina)
1997	88.2 ± 4.2%	7	83.6 ± 0.8%	91.6 ± 4.2% (New Jersey)
1998	94.1 ± 2.7%	1	87.0 ± 0.7%	94.1 ± 2.7% (South Carolina)
1999	92.0 ± 3.4%	9	88.1 ± 0.7%	94.0 ± 3.1% (Rhode Island)
2000	94.9 ± 2.9%	5	90.3 ± 0.6%	96.4 ± 1.9% (Rhode Island)
2001	92.3 ± 3.7%	5	88.9 ± 0.7%	95.8 ± 2.2% (Rhode Island)
2002	93.8 ± 3.8%	2	89.9 ± 0.7%	97.0 ± 2.0% (Rhode Island)
2003	94.2 ± 3.2%	12	92.4 ± 0.6%	98.2 ± 1.4% (Connecticut)
2004	93.9 ± 4.6%	19	92.4 ± 0.6%	96.8 ± 1.7% (Florida)
2005	94.1 ± 4.6%	16	92.9 ± 0.6%	97.9 ± 2.0% (Massachusetts)
2006	95.7 ± 2.4%	10	93.3 ± 0.6%	97.8 ± 1.6% (Rhode Island)
2007	92.1 ± 3.7%	35	92.7 ± 0.7%	98.6 ± 1.5% (New Hampshire)
2008	95.8 ± 2.7%	6	93.5 ± 0.7%	98.1 ± 1.6% (Connecticut)
2009	97.0 ± 2.1%	3	92.4 ± 0.7%	98.8 ± 1.5% (Rhode Island)
2010	94.4 ± 2.7%	13	91.8 ± 0.7%	98.3 ± 1.5% (North Dakota)
2011	92.8 ± 3.7%	13	91.1 ± 0.7%	97.1 ± 1.7% (Louisiana)
2012	94.4 ± 3.3%	5	89.7 ± 0.9%	96.3 ± 3.0% (Georgia)
2013	95.0 ± 3.2%	4	90.8 ± 1.0%	96.7 ± 2.3% (Rhode Island)
2014	95.5 ± 3.2%	5	91.6 ± 0.9%	97.6 ± 1.8% (Louisiana)
2015	90.2 ± 4.9%	44	92.6 ± 0.7%	97.3 ± 2.3% (Connecticut)
2016	95.1 ± 3.1%	7	90.5 ± 1.1%	97.4 ± 1.9% (Iowa)
2017	94.3 ± 4.1%	7	91.4 ± 0.9%	97.7 ± 1.6% (North Dakota)

Data compiled by the ALC from National Immunization Surveys, 1995-2017<sup>1</sup>,  
<https://www.cdc.gov/vaccines/imz-managers/coverage/childvaxview/data-reports/hepb/index.html>

## GRAPH:

### Percentage of Children 19-35 Months of Age Receiving 3 or More Doses of Hepatitis B Vaccine



Data compiled by the ALC from National Immunization Surveys, 1995-2017<sup>1</sup>,

<https://www.cdc.gov/vaccines/imz-managers/coverage/childvaxview/data-reports/hepb/index.html>

## HEPATITIS B BIRTH DOSE VACCINATION COVERAGE

1 or more dose among infants within 3 days of birth

	Percentage of infants receiving			Rank among other states according to		
	1 dose within 1 day of birth*	1 dose within 2 days of birth	1 dose within 3 days of birth*	1 dose within 1 day of birth	1 dose within 2 days of birth	1 dose within 3 days of birth
2003		56.3 ± 7.4%		N/A	20	N/A
2004		60.5 ± 8.1%		N/A	21	N/A
2005		56.8 ± 7.3%		N/A	21	N/A
2006	55.8 ± 7.0%	62.3 ± 6.9%	63.0 ± 6.9%	15	16	17
2007	52.5 ± 6.0%	57.4 ± 5.9%	60.1 ± 5.8%	25	30	29
2008	55.3 ± 6.8%	61.5 ± 6.8%	62.8 ± 6.8%	19	26	29
2009	52.5 ± 6.9%	61.1 ± 6.8%	62.5 ± 6.8%	27	29	31
2010	58.5 ± 6.5%	64.7 ± 6.4%	67.4 ± 6.3%	27	25	24
2011	64.1 ± 7.2%	68.6 ± 7.1%	69.2 ± 7.0%	22	30	35
2012	70.8 ± 6.5%	76.4 ± 6.1%	78.4 ± 5.8%	13	17	14
2013	67.5 ± 8.0%	75.9 ± 7.4%	76.1 ± 7.4%	23	21	26
2014	56.0 ± 9.3%	67.7 ± 8.5%	67.9 ± 8.5%	41	40	43
2015	61.2 ± 7.3%	66.2 ± 7.1%	67.9 ± 8.5%	33	40	43
2016	67.0 ± 6.5%	70.9 ± 6.3%	72.1 ± 6.3%	21	26	31
2017	64.8 ± 8.3%	71.5 ± 7.9%	72.4 ± 7.8%	34	35	35

\*No data available 2003-2005

### 2017 U.S. NATIONAL AVERAGE

Day 1: 65.7 ± 1.6%  
Day 2: 72.0 ± 1.6%  
Day 3: 73.6 ± 1.6%

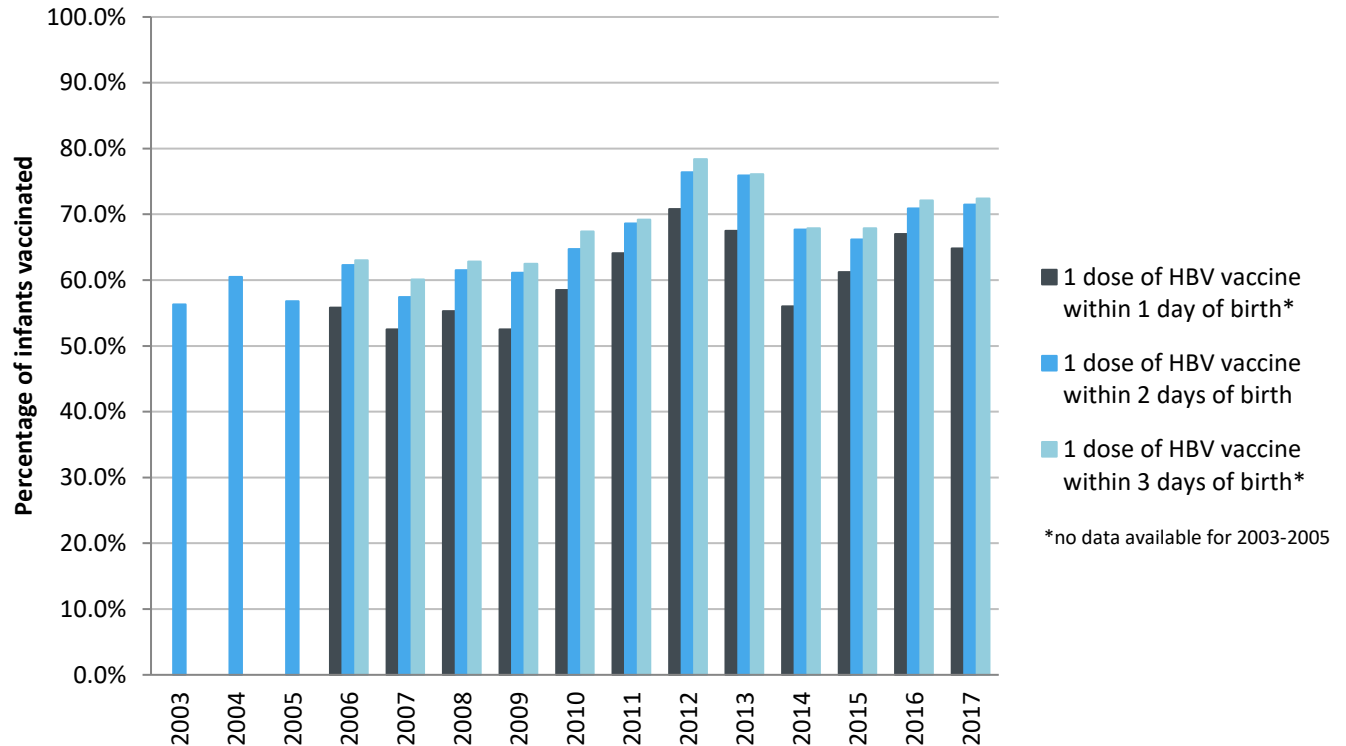
### 2017 HIGHEST BIRTH DOSE COVERAGE

Day 1: 82.0 ± 5.7% (Kentucky)  
Day 2: 84.1 ± 5.6% (Kentucky)  
Day 3: 84.1 ± 5.6% (Kentucky)

Data compiled by the ALC from National Immunization Surveys, 1995-2017<sup>1</sup>,  
<https://www.cdc.gov/vaccines/imz-managers/coverage/childvaxview/data-reports/hepb/index.html>

## GRAPH:

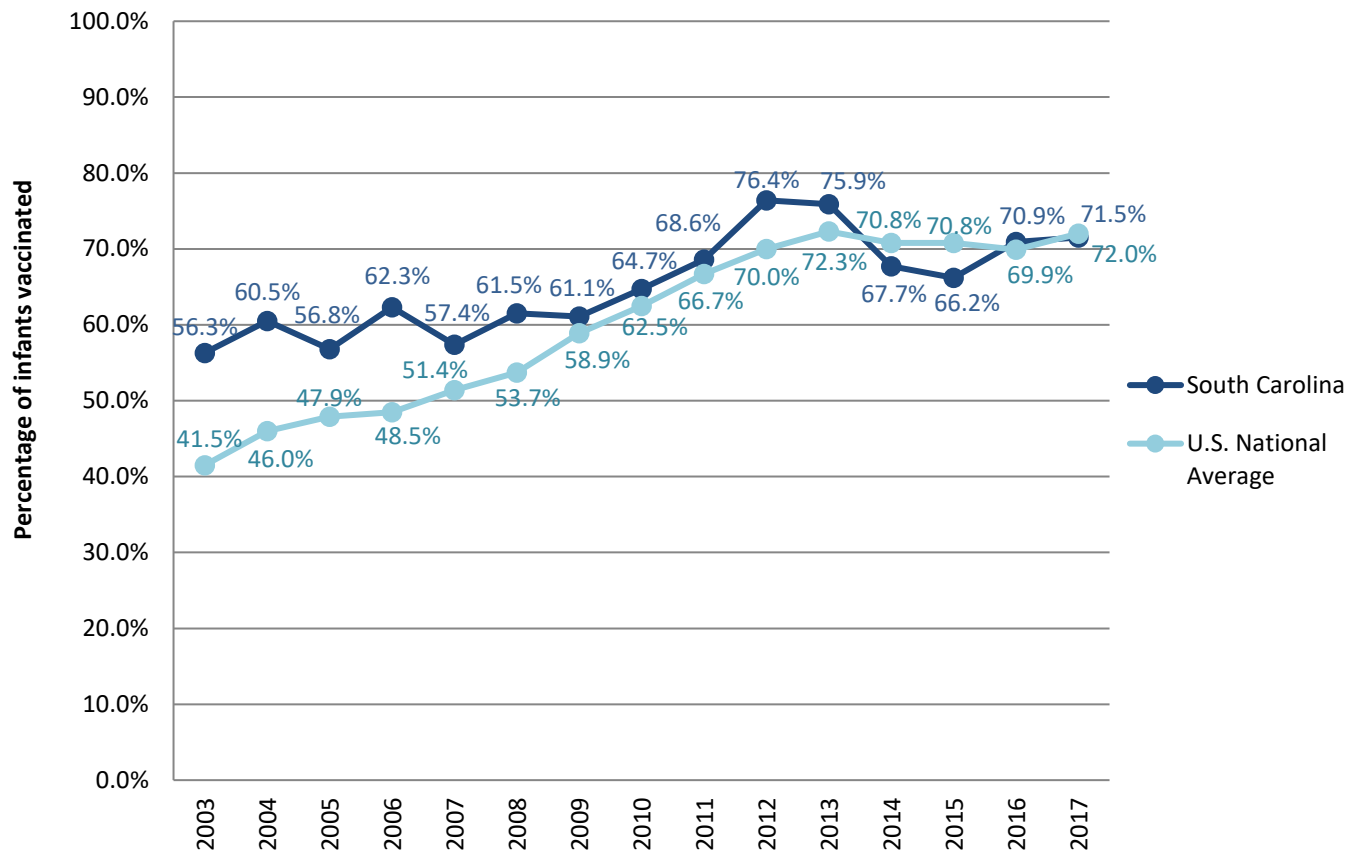
Estimated Vaccination Coverage for Hepatitis B Vaccine among Children from Birth to 3 Days of Age in South Carolina



Data compiled by the ALC from National Immunization Surveys, 1995-2017<sup>1</sup>,  
<https://www.cdc.gov/vaccines/imz-managers/coverage/childvaxview/data-reports/hepb/index.html>

## GRAPH:

### Percentage of Infants Receiving 1 Dose of Hepatitis B Vaccine within 2 Days of Birth



Data compiled by the ALC from National Immunization Surveys, 1995-2017<sup>1</sup>, <https://www.cdc.gov/vaccines/imz-managers/coverage/childvaxview/data-reports/hepb/index.html>

<sup>1</sup> The data from the National Immunization Surveys constitute a composite of data from children who were 19-35 months of age at the time of the survey. Therefore, the data might reflect a different estimate from the states' own birth cohort data.