

RHODE ISLAND

CONTACT THE STAFF

COORDINATOR:

Hsiu-Chin Shen, MS, RN
Email: HsiuChin.Shen@health.ri.gov
Phone: 401-222-1254
Fax: 401-222-1088

ADDRESS:

Rhode Island Department of Health Division of
Family Health
Immunization Program
3 Capital Hill, Room 302
Providence, RI 02908

SCREENING REQUIREMENTS

Does the jurisdiction require screening of pregnant women for hepatitis B infection or hepatitis B surface antigen (HBsAg)?

No

Does the jurisdiction specifically require reporting of positive HBsAg status in pregnant women?

Yes - R.I. Code R. 14-040-002

COMPLETION OF HEPATITIS B VACCINATION SERIES

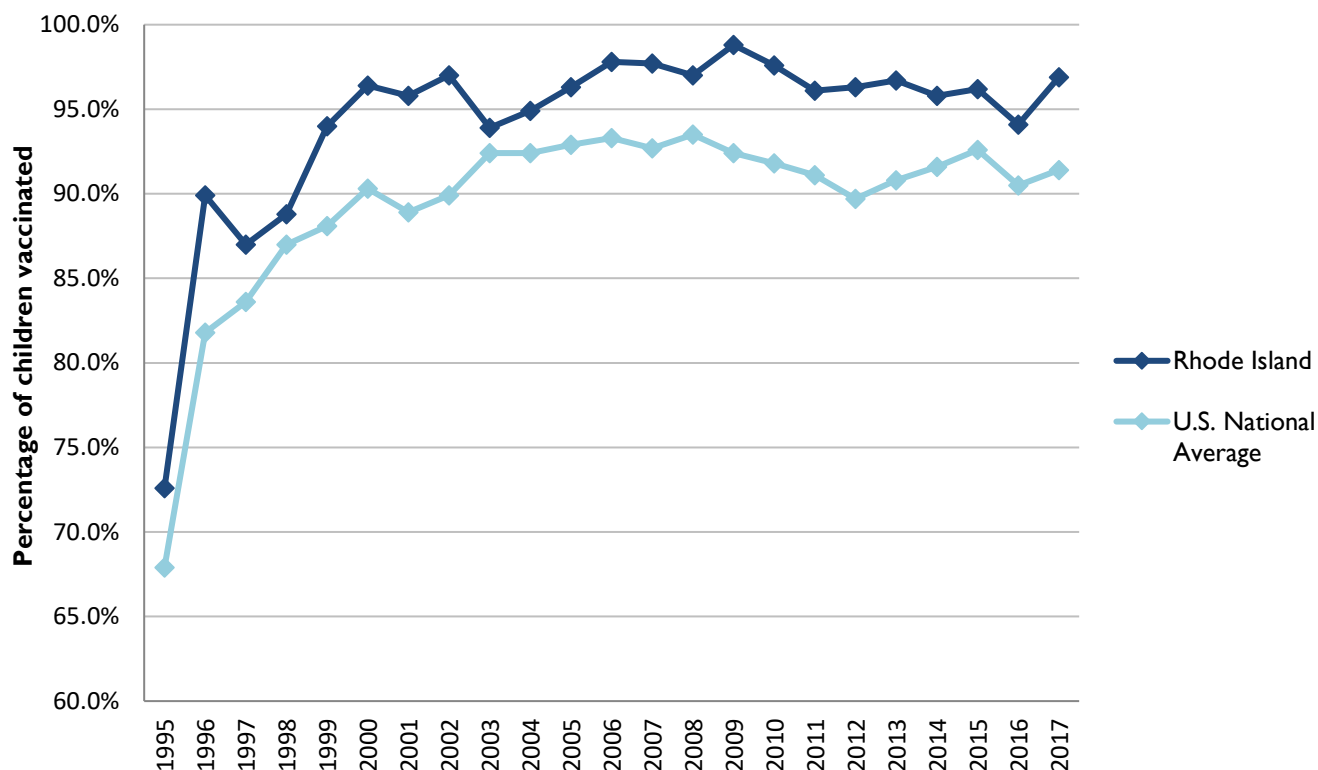
3 or more doses among children 19-35 months of age

	Percentage of children 19-35 months of age receiving 3 or more doses	Rank among other states	U.S. National Average	#1 ranked state and coverage
1995	72.6 ± 6.4%	15	67.9 ± 1.3%	88.5 ± 5.4% (South Carolina)
1996	89.9 ± 3.8%	3	81.8 ± 0.9%	95.8 ± 2.2% (South Carolina)
1997	87.0 ± 4.0%	14	83.6 ± 0.8%	91.6 ± 4.2% (New Jersey)
1998	88.8 ± 3.8%	19	87.0 ± 0.7%	94.1 ± 2.7% (South Carolina)
1999	94.0 ± 3.1%	1	88.1 ± 0.7%	94.0 ± 3.1% (Rhode Island)
2000	96.4 ± 1.9%	1	90.3 ± 0.6%	96.4 ± 1.9% (Rhode Island)
2001	95.8 ± 2.2%	1	88.9 ± 0.7%	95.8 ± 2.2% (Rhode Island)
2002	97.0 ± 2.0%	1	89.9 ± 0.7%	97.0 ± 2.0% (Rhode Island)
2003	93.9 ± 3.5%	16	92.4 ± 0.6%	98.2 ± 1.4% (Connecticut)
2004	94.9 ± 2.8%	10	92.4 ± 0.6%	96.8 ± 1.7% (Florida)
2005	96.3 ± 2.8%	3	92.9 ± 0.6%	97.9 ± 2.0% (Massachusetts)
2006	97.8 ± 1.6%	1	93.3 ± 0.6%	97.8 ± 1.6% (Rhode Island)
2007	97.7 ± 2.9%	3	92.7 ± 0.7%	98.6 ± 1.5% (New Hampshire)
2008	97.0 ± 2.1%	2	93.5 ± 0.7%	98.1 ± 1.6% (Connecticut)
2009	98.8 ± 1.5%	1	92.4 ± 0.7%	98.8 ± 1.5% (Rhode Island)
2010	97.6 ± 1.7%	2	91.8 ± 0.7%	98.3 ± 1.5% (North Dakota)
2013	96.7 ± 2.3%	1	90.8 ± 1.0%	96.7 ± 2.3% (Rhode Island)
2014	95.8 ± 3.5%	4	91.6 ± 0.9%	97.6 ± 1.8% (Louisiana)
2015	96.2 ± 2.4%	3	92.6 ± 0.7%	97.3 ± 2.3% (Connecticut)
2016	94.1 ± 3.4%	13	90.5 ± 1.1%	97.4 ± 1.9% (Iowa)
2017	96.9 ± 2.2%	2	91.4 ± 0.9%	97.7 ± 1.6% (North Dakota)

Data compiled by the ALC from National Immunization Surveys, 1995-2017¹,
<https://www.cdc.gov/vaccines/imz-managers/coverage/childvaxview/data-reports/hepb/index.html>

GRAPH:

Percentage of Children 19-35 Months of Age Receiving 3 or More Doses of Hepatitis B Vaccine



Data compiled by the ALC from National Immunization Surveys, 1995-2017¹,
<https://www.cdc.gov/vaccines/imz-managers/coverage/childvaxview/data-reports/hepb/index.html>

HEPATITIS B BIRTH DOSE VACCINATION COVERAGE

1 or more dose among infants within 3 days of birth

	Percentage of infants receiving			Rank among other states according to		
	1 dose within 1 day of birth*	1 dose within 2 days of birth	1 dose within 3 days of birth*	1 dose within 1 day of birth	1 dose within 2 days of birth	1 dose within 3 days of birth
2003		48.5 ± 7.3%		N/A	26	N/A
2004		77.4 ± 5.3%		N/A	3	N/A
2005		73.1 ± 5.8%		N/A	6	N/A
2006	60.1 ± 6.3%	73.5 ± 5.5%	74.3 ± 5.4%	10	4	5
2007	44.7 ± 8.1%	61.7 ± 7.8%	65.6 ± 7.6%	31	22	18
2008	52.1 ± 7.9%	65.4 ± 7.5%	69.4 ± 7.1%	25	15	9
2009	56.4 ± 7.7%	67.0 ± 7.5%	69.5 ± 7.3%	24	17	15
2010	58.3 ± 7.9%	66.6 ± 7.6%	69.7 ± 7.5%	28	21	18
2011	64.2 ± 6.4%	70.6 ± 6.2%	73.2 ± 6.1%	21	23	20
2012	55.4 ± 6.9%	67.2 ± 6.7%	68.3 ± 6.7%	41	36	39
2013	64.2 ± 7.7%	71.7 ± 7.0%	72.7 ± 7.0%	27	34	35
2014	63.9 ± 7.7%	73.5 ± 7.4%	74.9 ± 7.3%	33	27	28
2015	59.6 ± 6.9%	70.3 ± 6.6%	73.2 ± 6.4%	37	31	26
2016	49.3 ± 7.7%	68.4 ± 7.5%	75.7 ± 6.4%	48	35	15
2017	60.1 ± 6.9%	73.4 ± 6.1%	75.7 ± 5.9%	42	29	25

*No data available 2003-2005

2017 U.S. NATIONAL AVERAGE

Day 1: 65.7 ± 1.6%
Day 2: 72.0 ± 1.6%
Day 3: 73.6 ± 1.6%

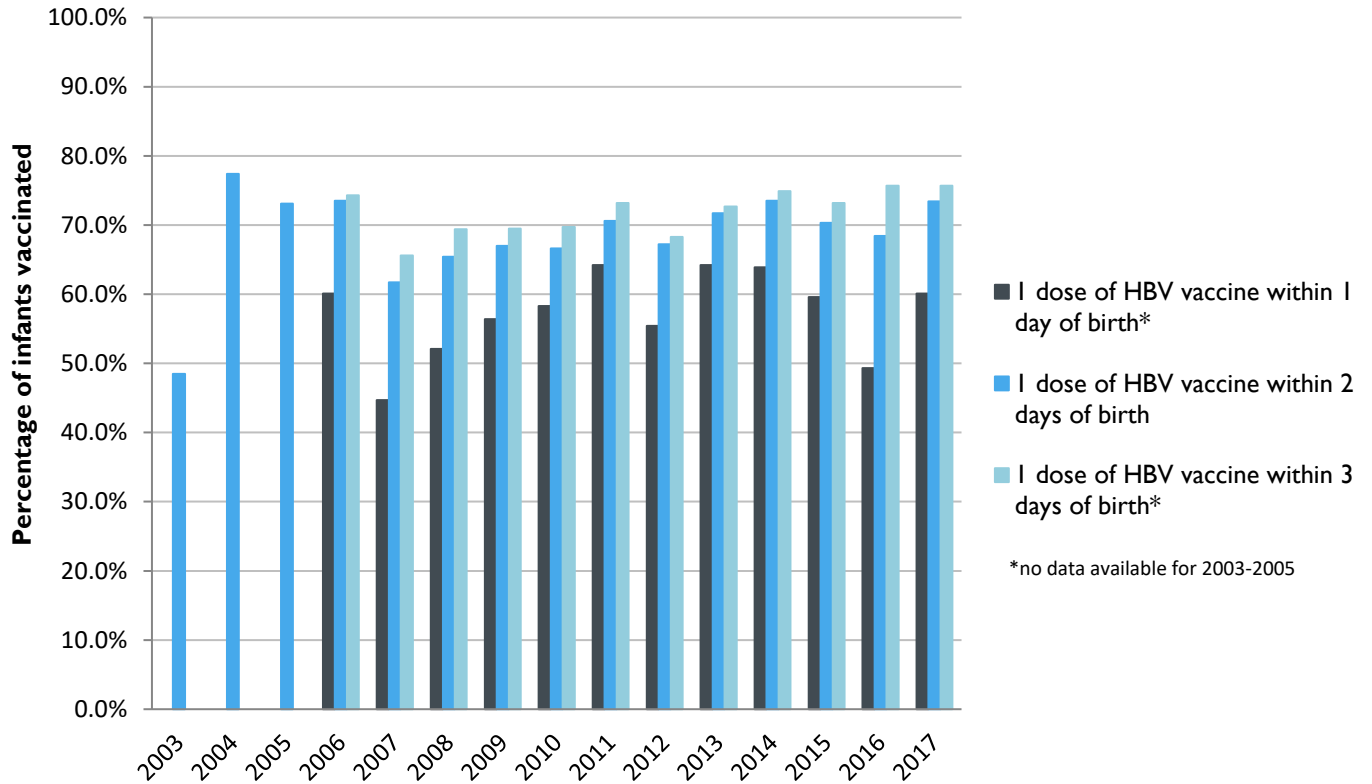
2017 HIGHEST BIRTH DOSE COVERAGE

Day 1: 82.0 ± 5.7% (Kentucky)
Day 2: 84.1 ± 5.6% (Kentucky)
Day 3: 84.1 ± 5.6% (Kentucky)

Data compiled by the ALC from National Immunization Surveys, 1995-2017¹,
<https://www.cdc.gov/vaccines/imz-managers/coverage/childvaxview/data-reports/hepb/index.html>

GRAPH:

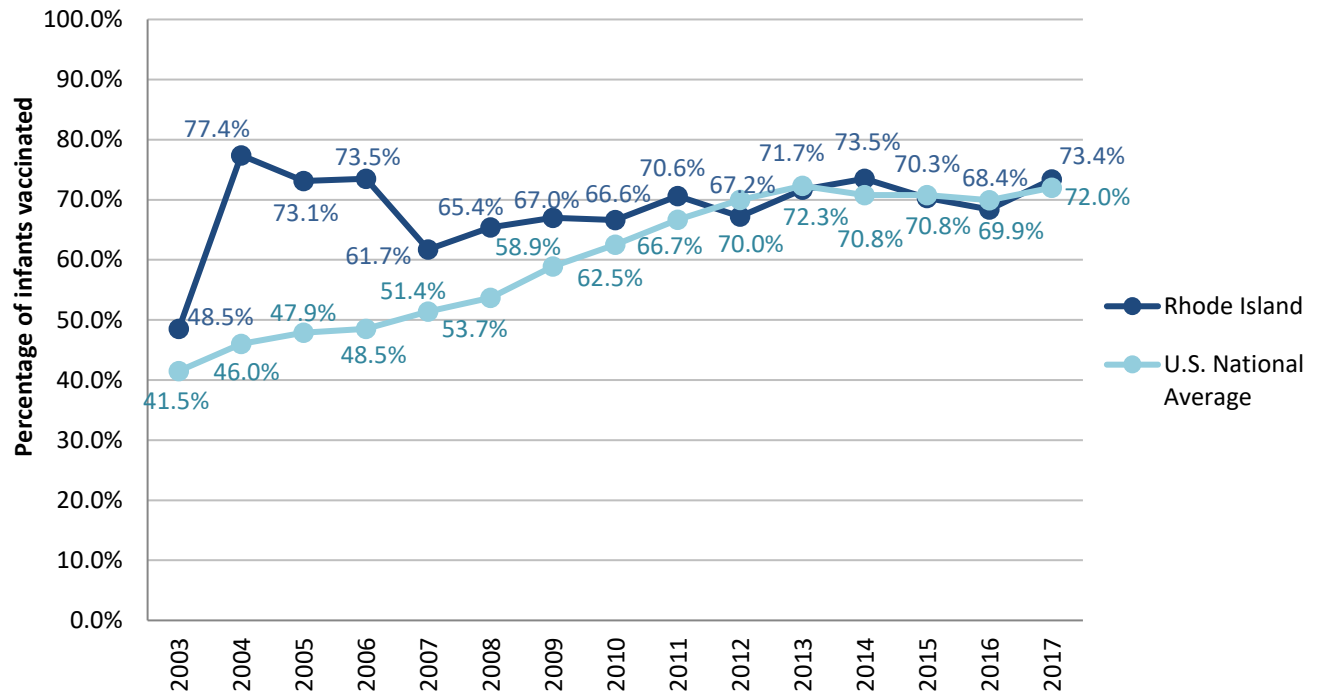
Estimated Vaccination Coverage for Hepatitis B Vaccine among Children from Birth to 3 Days of Age in Rhode Island



Data compiled by the ALC from National Immunization Surveys, 1995-2017¹,
<https://www.cdc.gov/vaccines/imz-managers/coverage/childvaxview/data-reports/hepb/index.html>

GRAPH:

Percentage of Infants Receiving 1 Dose of Hepatitis B Vaccine within 2 Days of Birth



Data compiled by the ALC from National Immunization Surveys, 1995-2017¹,
<https://www.cdc.gov/vaccines/imz-managers/coverage/childvaxview/data-reports/hepb/index.html>

¹ The data from the National Immunization Surveys constitute a composite of data from children who were 19-35 months of age at the time of the survey. Therefore, the data might reflect a different estimate from the states' own birth cohort data.