

OREGON

CONTACT THE STAFF

COORDINATOR:

Lee Rose Peters, MPH
Email: lee.r.peters@state.or.us
Phone: 971-673-0310
Fax: 971-673-0278

ADDRESS:

Oregon Immunization Program
800 NE Oregon St., Suite 370
Portland, OR 97232-2162

SCREENING REQUIREMENTS

Does the jurisdiction require screening of pregnant women for hepatitis B infection or hepatitis B surface antigen (HBsAg)?

Yes - Or. Admin. R. 333-019-0036(1)(a) (2008)

Does the jurisdiction specifically require reporting of positive HBsAg status in pregnant women?

No

COMPLETION OF HEPATITIS B VACCINATION SERIES

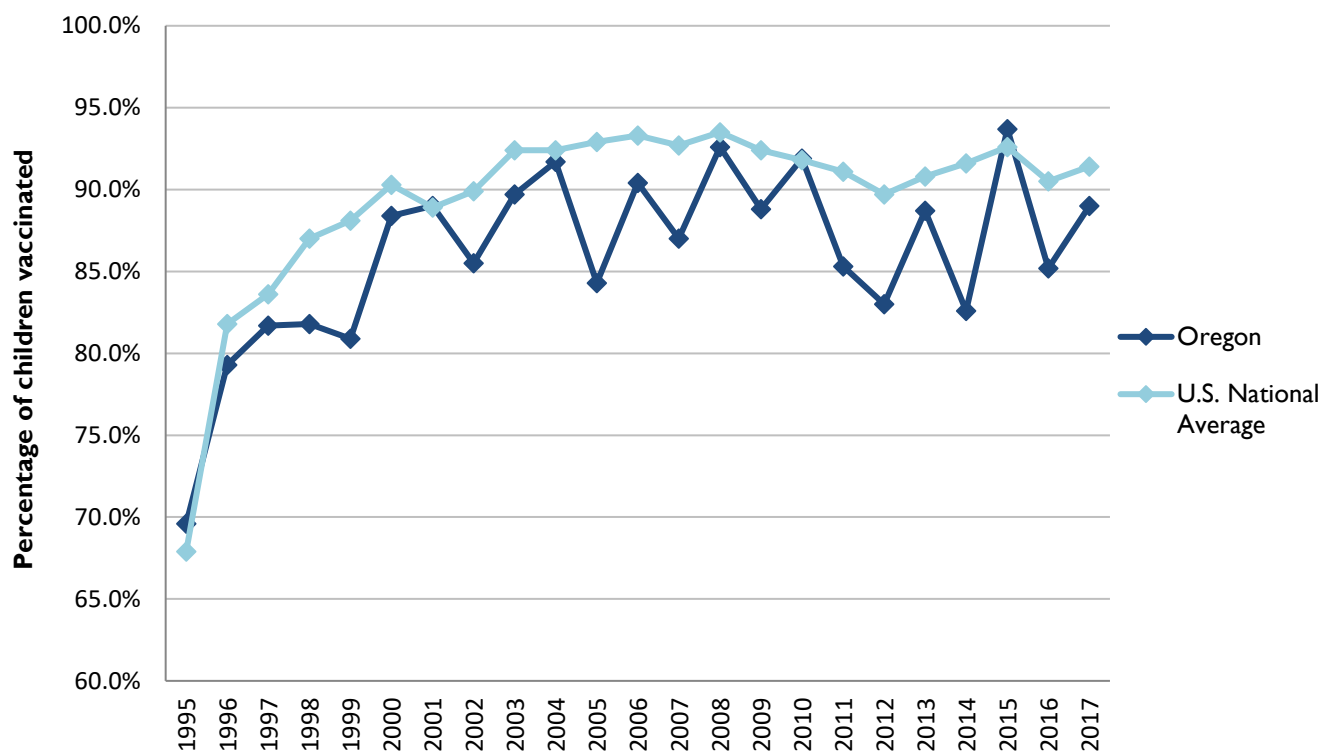
3 or more doses among children 19-35 months of age

	Percentage of children 19-35 months of age receiving 3 or more doses	Rank among other states	U.S. National Average	#1 ranked state and coverage
1995	69.6 ± 6.7%	20	67.9 ± 1.3%	88.5 ± 5.4% (South Carolina)
1996	79.3 ± 4.9%	35	81.8 ± 0.9%	95.8 ± 2.2% (South Carolina)
1997	81.7 ± 4.6%	38	83.6 ± 0.8%	91.6 ± 4.2% (New Jersey)
1998	81.8 ± 4.7%	47	87.0 ± 0.7%	94.1 ± 2.7% (South Carolina)
1999	80.9 ± 5.1%	50	88.1 ± 0.7%	94.0 ± 3.1% (Rhode Island)
2000	88.4 ± 4.0%	39	90.3 ± 0.6%	96.4 ± 1.9% (Rhode Island)
2001	89.0 ± 4.3%	25	88.9 ± 0.7%	95.8 ± 2.2% (Rhode Island)
2002	85.5 ± 4.6%	48	89.9 ± 0.7%	97.0 ± 2.0% (Rhode Island)
2003	89.7 ± 4.4%	43	92.4 ± 0.6%	98.2 ± 1.4% (Connecticut)
2004	91.7 ± 3.6%	37	92.4 ± 0.6%	96.8 ± 1.7% (Florida)
2005	84.3 ± 5.6%	48	92.9 ± 0.6%	97.9 ± 2.0% (Massachusetts)
2006	90.4 ± 4.0%	42	93.3 ± 0.6%	97.8 ± 1.6% (Rhode Island)
2007	87.0 ± 6.0%	49	92.7 ± 0.7%	98.6 ± 1.5% (New Hampshire)
2008	92.6 ± 3.7%	36	93.5 ± 0.7%	98.1 ± 1.6% (Connecticut)
2009	88.8 ± 4.2%	44	92.4 ± 0.7%	98.8 ± 1.5% (Rhode Island)
2010	91.9 ± 3.4%	43	91.8 ± 0.7%	98.3 ± 1.5% (North Dakota)
2011	85.3 ± 5.4%	49	91.1 ± 0.7%	97.1 ± 1.7% (Louisiana)
2012	83.0 ± 5.5%	50	89.7 ± 0.9%	96.3 ± 3.0% (Georgia)
2013	88.7 ± 4.2%	41	90.8 ± 1.0%	96.7 ± 2.3% (Rhode Island)
2014	82.6 ± 6.0%	50	91.6 ± 0.9%	97.6 ± 1.8% (Louisiana)
2015	93.7 ± 3.7%	19	92.6 ± 0.7%	97.3 ± 2.3% (Connecticut)
2016	85.2 ± 5.1%	50	90.5 ± 1.1%	97.4 ± 1.9% (Iowa)
2017	89.0 ± 4.9%	45	91.4 ± 0.9%	97.7 ± 1.6% (North Dakota)

Data compiled by the ALC from National Immunization Surveys, 1995-2017¹,
<https://www.cdc.gov/vaccines/imz-managers/coverage/childvaxview/data-reports/hepb/index.html>

GRAPH:

Percentage of Children 19-35 Months of Age Receiving 3 or More Doses of Hepatitis B Vaccine



Data compiled by the ALC from National Immunization Surveys, 1995-2017¹, <https://www.cdc.gov/vaccines/imz-managers/coverage/childvaxview/data-reports/hepb/index.html>

HEPATITIS B BIRTH DOSE VACCINATION COVERAGE

1 or more dose among infants within 3 days of birth

	Percentage of infants receiving			Rank among other states according to		
	1 dose within 1 day of birth*	1 dose within 2 days of birth	1 dose within 3 days of birth*	1 dose within 1 day of birth	1 dose within 2 days of birth	1 dose within 3 days of birth
2003		39.2 ± 6.5%		N/A	32	N/A
2004		36.4 ± 6.6%		N/A	41	N/A
2005		32.9 ± 7.2%		N/A	40	N/A
2006	25.7 ± 6.5%	31.9 ± 6.9%	33.3 ± 7.0%	43	40	40
2007	22.7 ± 6.6%	33.4 ± 7.6%	34.4 ± 7.6%	46	43	44
2008	31.5 ± 7.1%	39.2 ± 7.6%	41.8 ± 7.7%	45	43	42
2009	45.3 ± 6.8%	56.1 ± 6.6%	59.4 ± 6.7%	36	35	35
2010	49.0 ± 6.9%	58.4 ± 6.6%	61.7 ± 6.4%	38	38	36
2011	56.7 ± 8.1%	64.9 ± 7.6%	66.5 ± 7.5%	36	37	38
2012	54.3 ± 7.0%	61.9 ± 6.8%	65.4 ± 6.6%	45	44	41
2013	54.4 ± 6.7%	65.1 ± 6.4%	66.8 ± 6.3%	44	42	43
2014	47.2 ± 8.5%	55.7 ± 8.7%	58.6 ± 8.4%	49	48	47
2015	58.4 ± 7.9%	68.9 ± 7.4%	72.5 ± 7.0%	40	34	30
2016	62.4 ± 6.9%	69.2 ± 6.5%	69.6 ± 6.5%	34	34	37
2017	70.3 ± 6.7%	74.9 ± 6.3%	76.4 ± 6.2%	20	21	21

*No data available 2003-2005

2017 U.S. NATIONAL AVERAGE

Day 1: 65.7 ± 1.6%

Day 2: 72.0 ± 1.6%

Day 3: 73.6 ± 1.6%

2017 HIGHEST BIRTH DOSE COVERAGE

Day 1: 82.0 ± 5.7% (Kentucky)

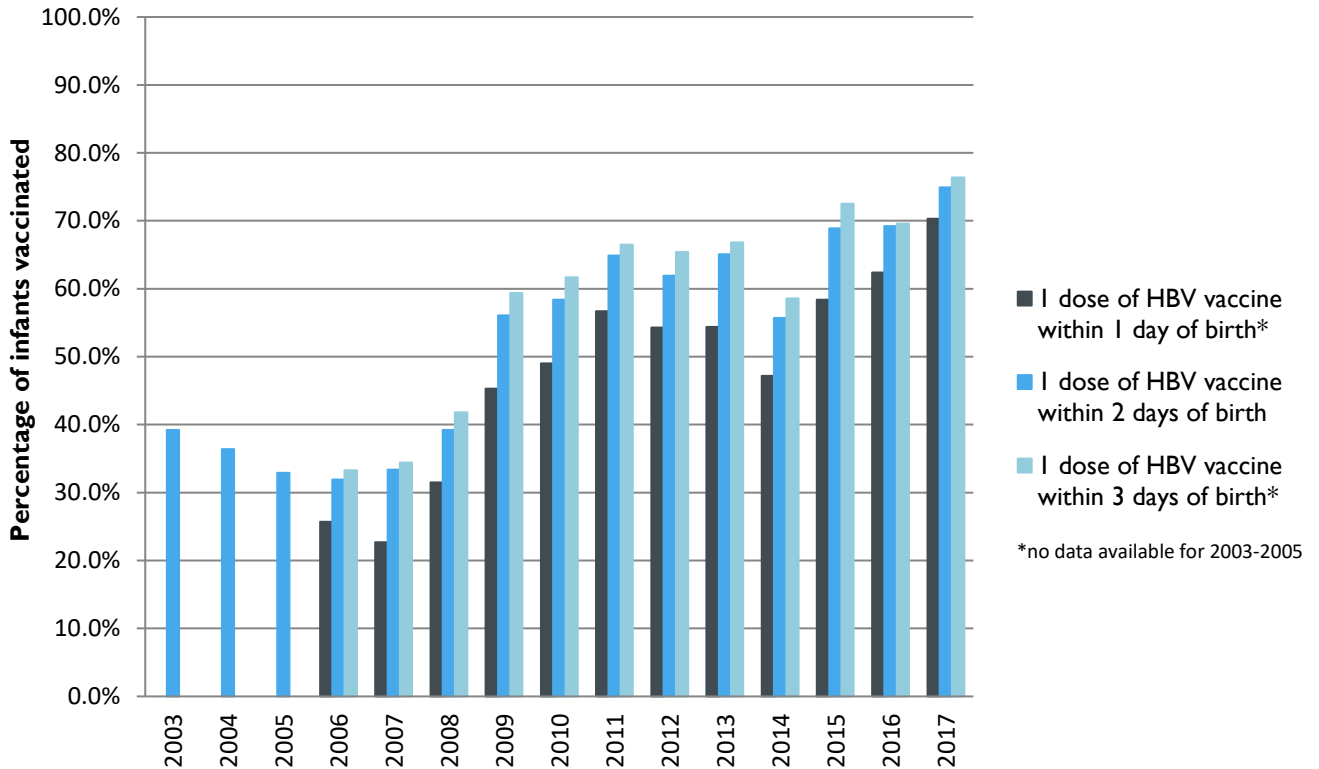
Day 2: 84.1 ± 5.6% (Kentucky)

Day 3: 84.1 ± 5.6% (Kentucky)

Data compiled by the ALC from National Immunization Surveys, 1995-2017¹,
<https://www.cdc.gov/vaccines/imz-managers/coverage/childvaxview/data-reports/hepb/index.html>

GRAPH:

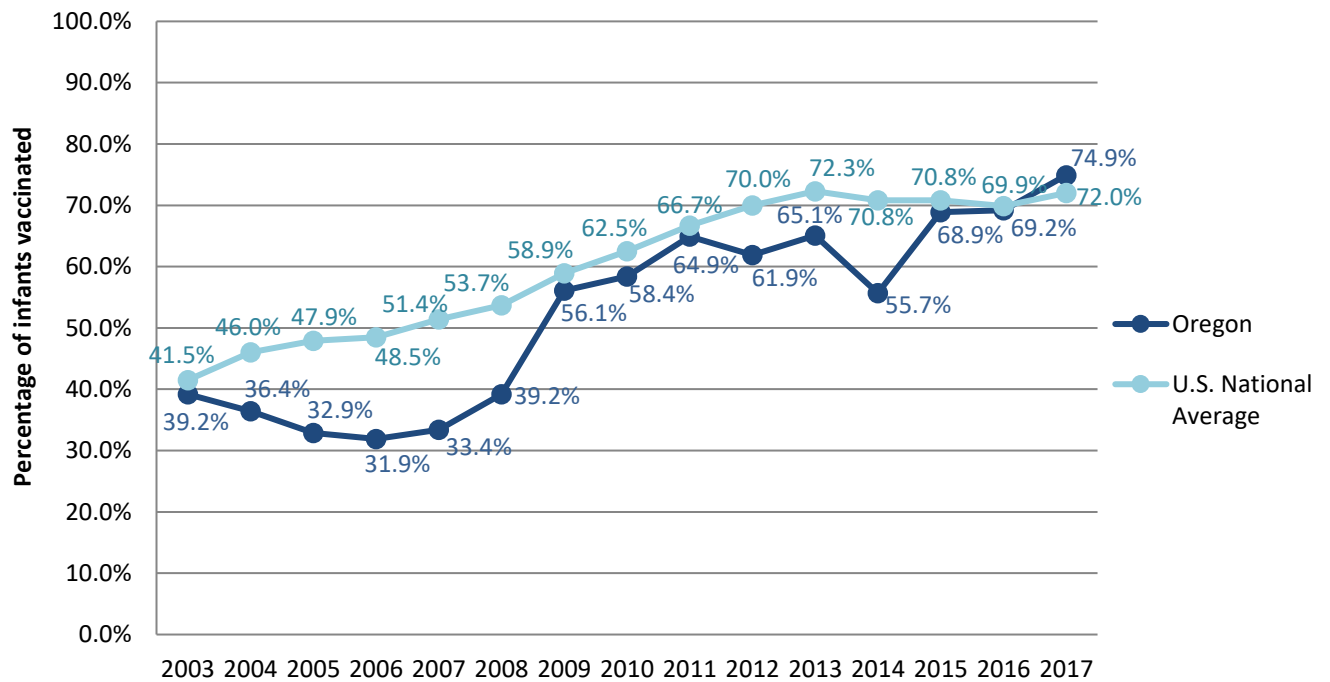
Estimated Vaccination Coverage for Hepatitis B Vaccine among Children from Birth to 3 Days of Age in Oregon



Data compiled by the ALC from National Immunization Surveys, 1995-2017¹,
<https://www.cdc.gov/vaccines/imz-managers/coverage/childvaxview/data-reports/hepb/index.html>

GRAPH:

Percentage of Infants Receiving 1 Dose of Hepatitis B Vaccine within 2 Days of Birth



Data compiled by the ALC from National Immunization Surveys, 1995-2017¹,
<https://www.cdc.gov/vaccines/imz-managers/coverage/childvaxview/data-reports/hepb/index.html>

¹ The data from the National Immunization Surveys constitute a composite of data from children who were 19-35 months of age at the time of the survey. Therefore, the data might reflect a different estimate from the states' own birth cohort data.