

# NEW YORK

## CONTACT THE STAFF

### COORDINATOR:

Carolyn Perry  
Email: [Carolyn.perry@health.ny.gov](mailto:Carolyn.perry@health.ny.gov)  
Phone: 518-473-4437  
Fax: 518-474-1495

### ADDRESS:

New York State Department of Health  
Bureau of Immunization  
ESP, Corning Tower #649  
Albany, NY 12235

### NEW YORK CITY COORDINATOR:

Julie Lazaroff, MPH  
Email: [jlazarof@health.nyc.gov](mailto:jlazarof@health.nyc.gov)  
Phone: 347-396-2476  
Fax: 347-396-2558 or 347-396-2559

### ADDRESS:

Bureau of Immunization  
NYCDOHMH  
Gotham Center  
42-09 28<sup>th</sup> Street  
Queens, New York 11101-4132

## SCREENING REQUIREMENTS

Does the jurisdiction require screening of pregnant women for hepatitis B infection or hepatitis B surface antigen (HBsAg)?

**Yes** - N.Y. CLS Pub Health § 2500-e(1); N.Y. CLS Pub Health § 2500-e(5); N.Y. Comp. Codes R. & Regs. § 69-3; N.Y. Comp. Codes R. & Regs. § 754.7

Does the jurisdiction specifically require reporting of positive HBsAg status in pregnant women?

**Yes** - N.Y. CLS Pub Health § 2500-e(6); N.Y. Comp. Codes R. & Regs. § 69-3

## COMPLETION OF HEPATITIS B VACCINATION SERIES

3 or more doses among children 19-35 months of age

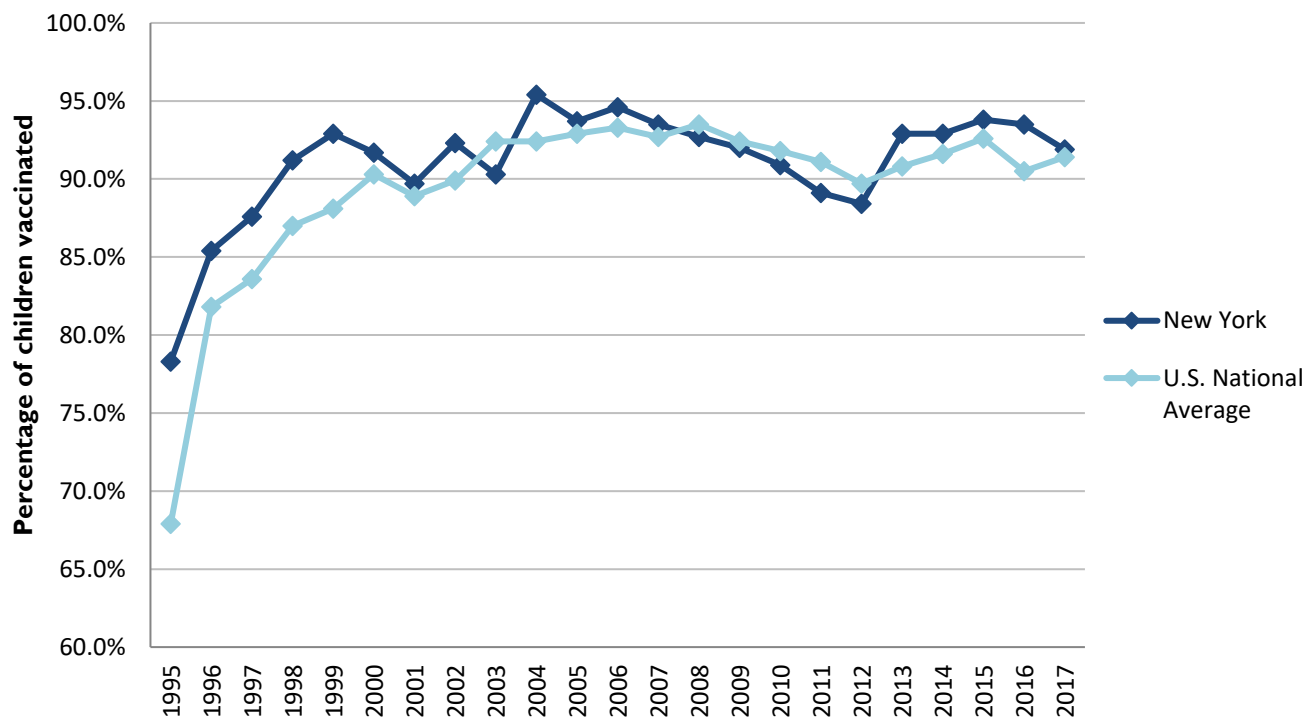
	Percentage of children 19-35 months of age receiving 3 or more doses	Rank among other states	U.S. National Average	#1 ranked state and coverage
1995	78.3 ± 5.6%	6	67.9 ± 1.3%	88.5 ± 5.4% (South Carolina)
1996	85.4 ± 3.6%	16	81.8 ± 0.9%	95.8 ± 2.2% (South Carolina)
1997	87.6 ± 3.4%	11	83.6 ± 0.8%	91.6 ± 4.2% (New Jersey)
1998	91.2 ± 3.2%	3	87.0 ± 0.7%	94.1 ± 2.7% (South Carolina)
1999	92.9 ± 2.3%	7	88.1 ± 0.7%	94.0 ± 3.1% (Rhode Island)
2000	91.7 ± 2.6%	16	90.3 ± 0.6%	96.4 ± 1.9% (Rhode Island)
2001	89.7 ± 2.9%	22	88.9 ± 0.7%	95.8 ± 2.2% (Rhode Island)
2002	92.3 ± 2.7%	16	89.9 ± 0.7%	97.0 ± 2.0% (Rhode Island)
2003	90.3 ± 3.1%	39	92.4 ± 0.6%	98.2 ± 1.4% (Connecticut)
2004	95.4 ± 2.2%	5	92.4 ± 0.6%	96.8 ± 1.7% (Florida)
2005	93.7 ± 2.9%	19	92.9 ± 0.6%	97.9 ± 2.0% (Massachusetts)
2006	94.6 ± 2.2%	19	93.3 ± 0.6%	97.8 ± 1.6% (Rhode Island)
2007	93.5 ± 2.3%	27	92.7 ± 0.7%	98.6 ± 1.5% (New Hampshire)
2008	92.7 ± 2.5%	35	93.5 ± 0.7%	98.1 ± 1.6% (Connecticut)
2009	92.0 ± 3.0%	29	92.4 ± 0.7%	98.8 ± 1.5% (Rhode Island)
2010	90.9 ± 3.3%	35	91.8 ± 0.7%	98.3 ± 1.5% (North Dakota)
2011	89.1 ± 3.7%	38	91.1 ± 0.7%	97.1 ± 1.7% (Louisiana)

2012	88.4 ± 3.0%	38	89.7 ± 0.9%	96.3 ± 3.0% (Georgia)
2013	92.9 ± 3.0%	14	90.8 ± 1.0%	96.7 ± 2.3% (Rhode Island)
2014	92.9 ± 2.9%	17	91.6 ± 0.9%	97.6 ± 1.8% (Louisiana)
2015	93.8 ± 2.2%	18	92.6 ± 0.7%	97.3 ± 2.3% (Connecticut)
2016	93.5 ± 2.4%	19	90.5 ± 1.1%	97.4 ± 1.9% (Iowa)
2017	91.9 ± 2.8%	27	91.4 ± 0.9%	97.7 ± 1.6% (North Dakota)

Data compiled by the ALC from National Immunization Surveys, 1995-2017<sup>1</sup>,  
<https://www.cdc.gov/vaccines/imz-managers/coverage/childvaxview/data-reports/hepb/index.html>

## GRAPH:

### Percentage of Children 19-35 Months of Age Receiving 3 or More Doses of Hepatitis B Vaccine



Data compiled by the ALC from National Immunization Surveys, 1995-2017<sup>1</sup>,  
<https://www.cdc.gov/vaccines/imz-managers/coverage/childvaxview/data-reports/hepb/index.html>

## HEPATITIS B BIRTH DOSE VACCINATION COVERAGE

### 1 or more dose among infants within 3 days of birth

	Percentage of infants receiving			Rank among other states according to		
	1 dose within 1 day of birth*	1 dose within 2 days of birth	1 dose within 3 days of birth*	1 dose within 1 day of birth	1 dose within 2 days of birth	1 dose within 3 days of birth
2003		22.7 ± 4.2%		N/A	44	N/A
2004		23.3 ± 4.6%		N/A	45	N/A
2005		24.0 ± 5.0%		N/A	48	N/A
2006	24.0 ± 4.2%	26.2 ± 4.3%	27.4 ± 4.4%	44	45	46
2007	30.3 ± 4.9%	33.8 ± 5.0%	35.9 ± 5.0%	41	41	41
2008	30.4 ± 4.7%	32.8 ± 4.7%	34.4 ± 4.8%	47	47	47
2009	43.6 ± 5.4%	47.5 ± 5.4%	48.6 ± 5.4%	40	43	43
2010	44.2 ± 5.5%	48.6 ± 5.5%	50.5 ± 5.5%	44	48	48
2011	48.8 ± 5.1%	51.9 ± 5.1%	53.7 ± 5.1%	45	48	48
2012	55.4 ± 4.7%	60.3 ± 4.7%	61.5 ± 4.7%	42	48	48

2013	58.0 ± 5.3%	62.0 ± 5.2%	63.7 ± 5.2%	39	44	44
2014	57.2 ± 5.5%	63.0 ± 5.3%	63.8 ± 5.3%	39	43	44
2015	52.0 ± 4.8%	57.3 ± 4.7%	59.0 ± 4.7%	46	48	48
2016	59.6 ± 4.8%	63.5 ± 4.8%	66.0 ± 4.7%	38	45	46
2017	65.8 ± 4.8%	70.4 ± 4.7%	71.3 ± 4.6%	33	37	38

\*No data available 2003-2005

**2017 U.S. NATIONAL AVERAGE**

Day 1: 65.7 ± 1.6%  
 Day 2: 72.0 ± 1.6%  
 Day 3: 73.6 ± 1.6%

**2017 HIGHEST BIRTH DOSE COVERAGE**

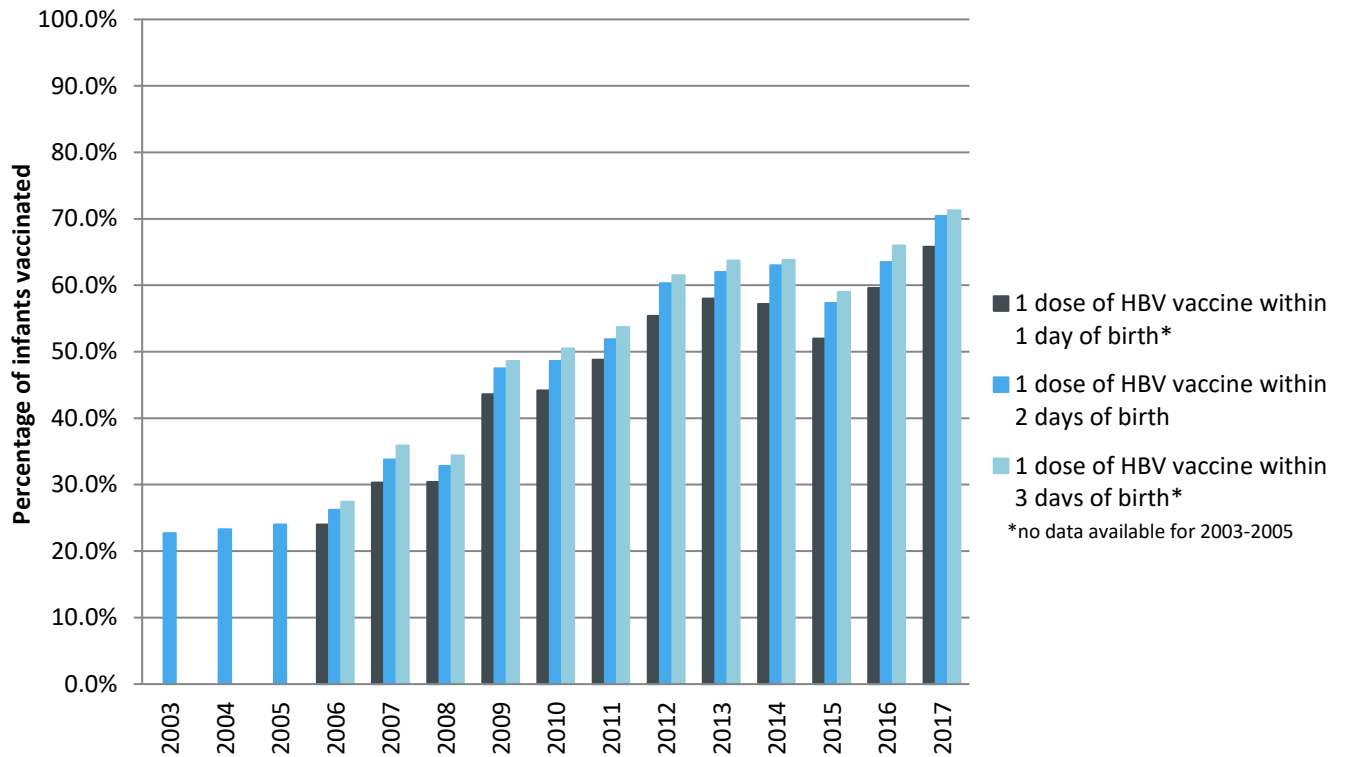
Day 1: 82.0 ± 5.7% (Kentucky)  
 Day 2: 84.1 ± 5.6% (Kentucky)  
 Day 3: 84.1 ± 5.6% (Kentucky)

*Note:* In 2016, Hepatitis B vaccine birth dose rate for hospitals outside of NYC was about 84% and higher than the values listed above. It is important to note that this may be a more accurate representation of the vaccine coverage in NY due to a more comprehensive representation of infants and low home birth rates NY. Due to lack of data from other states, the CDC’s reported values are listed in the table above. For more detailed information on vaccination coverage, visit New York State’s database of compiled data here: <https://health.data.ny.gov/Health/Hepatitis-B-Birth-Dose-Vaccination-Rates-Beginning/favj-y88j>.

Data compiled by the ALC from National Immunization Surveys, 1995-2017<sup>1</sup>, <https://www.cdc.gov/vaccines/imz-managers/coverage/childvaxview/data-reports/hepb/index.html>

**GRAPH:**

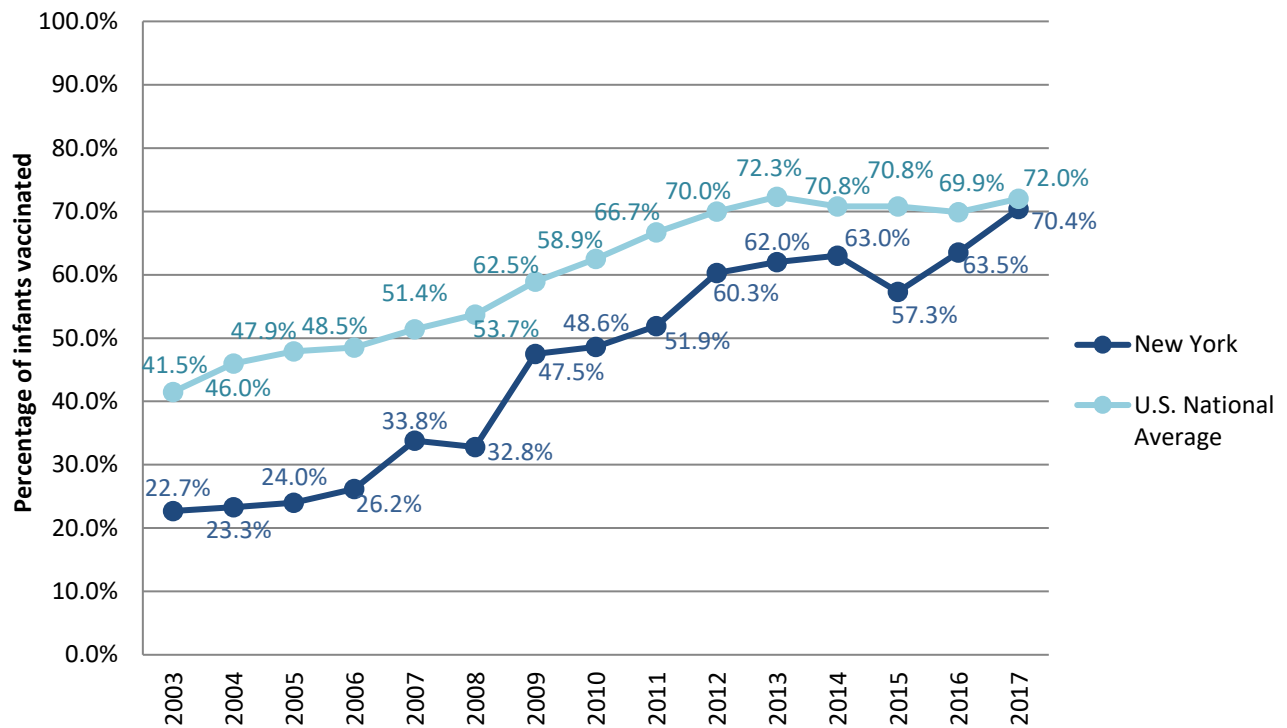
Estimated Vaccination Coverage for Hepatitis B Vaccine among Children from Birth to 3 Days of Age in New York



Data compiled by the ALC from National Immunization Surveys, 1995-2017<sup>1</sup>, <https://www.cdc.gov/vaccines/imz-managers/coverage/childvaxview/data-reports/hepb/index.html>

## GRAPH:

### Percentage of Infants Receiving 1 Dose of Hepatitis B Vaccine within 2 Days of Birth



Data compiled by the ALC from National Immunization Surveys, 1995-2017<sup>1</sup>,  
<https://www.cdc.gov/vaccines/imz-managers/coverage/childvaxview/data-reports/hepb/index.html>

<sup>1</sup> The data from the National Immunization Surveys constitute a composite of data from children who were 19-35 months of age at the time of the survey. Therefore, the data might reflect a different estimate from the states' own birth cohort data.