

# NEW JERSEY

## CONTACT THE STAFF

### COORDINATOR:

Jill Dinitz-Sklar, MPH  
Email: Jill.Dinitz-Sklar@doh.state.nj.us  
Phone: 609-826-4861  
Fax: 609-826-4866

### ADDRESS:

New Jersey Department of Health  
135 East State Street  
Trenton, NJ 08625-0396

## SCREENING REQUIREMENTS

Does the jurisdiction require screening of pregnant women for hepatitis B infection or hepatitis B surface antigen (HBsAg)?

**Yes** - N.J. Admin. Code tit. 8, § 8:43G-19.2

Does the jurisdiction specifically require reporting of positive HBsAg status in pregnant women?

**Yes** - N.J. Admin. Code tit. 8, § 8:43G-19.2 and N.J. Admin. Code tit. 8, § 8:57-1.3

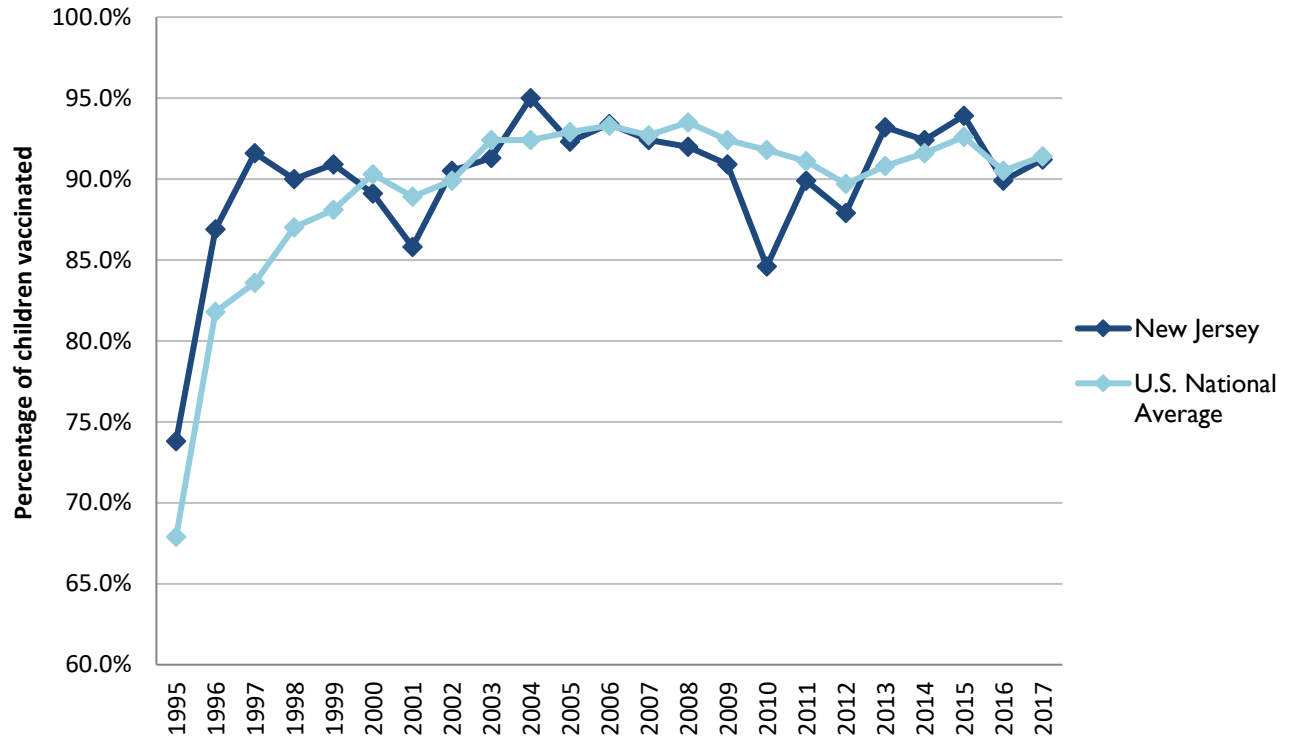
## COMPLETION OF HEPATITIS B VACCINATION SERIES

3 or more doses among children 19-35 months of age

	Percentage of children 19-35 months of age receiving 3 or more doses	Rank among other states	U.S. National Average	#1 ranked state and coverage
1995	73.8 ± 8.3%	13	67.9 ± 1.3%	88.5 ± 5.4% (South Carolina)
1996	86.9 ± 4.7%	8	81.8 ± 0.9%	95.8 ± 2.2% (South Carolina)
1997	91.6 ± 4.2%	1	83.6 ± 0.8%	91.6 ± 4.2% (New Jersey)
1998	90.0 ± 4.1%	8	87.0 ± 0.7%	94.1 ± 2.7% (South Carolina)
1999	90.9 ± 3.5%	15	88.1 ± 0.7%	94.0 ± 3.1% (Rhode Island)
2000	89.1 ± 3.9%	33	90.3 ± 0.6%	96.4 ± 1.9% (Rhode Island)
2001	85.8 ± 4.6%	41	88.9 ± 0.7%	95.8 ± 2.2% (Rhode Island)
2002	90.5 ± 3.7%	30	89.9 ± 0.7%	97.0 ± 2.0% (Rhode Island)
2003	91.3 ± 3.8%	33	92.4 ± 0.6%	98.2 ± 1.4% (Connecticut)
2004	95.0 ± 2.9%	8	92.4 ± 0.6%	96.8 ± 1.7% (Florida)
2005	92.3 ± 4.0%	28	92.9 ± 0.6%	97.9 ± 2.0% (Massachusetts)
2006	93.4 ± 3.9%	24	93.3 ± 0.6%	97.8 ± 1.6% (Rhode Island)
2007	92.4 ± 4.4%	31	92.7 ± 0.7%	98.6 ± 1.5% (New Hampshire)
2008	92.0 ± 4.0%	40	93.5 ± 0.7%	98.1 ± 1.6% (Connecticut)
2009	90.9 ± 4.2%	34	92.4 ± 0.7%	98.8 ± 1.5% (Rhode Island)
2010	90.1 ± 4.7%	38	91.8 ± 0.7%	98.3 ± 1.5% (North Dakota)
2011	92.7 ± 3.3%	15	91.1 ± 0.7%	97.1 ± 1.7% (Louisiana)
2012	87.9 ± 4.6%	41	89.7 ± 0.9%	96.3 ± 3.0% (Georgia)
2013	93.2 ± 3.6%	11	90.8 ± 1.0%	96.7 ± 2.3% (Rhode Island)
2014	92.4 ± 4.3%	23	91.6 ± 0.9%	97.6 ± 1.8% (Louisiana)
2015	93.9 ± 3.4%	17	92.6 ± 0.7%	97.3 ± 2.3% (Connecticut)
2016	89.9 ± 4.6%	35	90.5 ± 1.1%	97.4 ± 1.9% (Iowa)
2017	91.2 ± 3.9%	30	91.4 ± 0.9%	97.7 ± 1.6% (North Dakota)

## GRAPH:

### Percentage of Children 19-35 Months of Age Receiving 3 or More Doses of Hepatitis B Vaccine



## HEPATITIS B BIRTH DOSE VACCINATION COVERAGE

### 1 or more dose among infants within 3 days of birth

	Percentage of infants receiving			Rank among other states according to		
	1 dose within 1 day of birth*	1 dose within 2 days of birth	1 dose within 3 days of birth*	1 dose within 1 day of birth	1 dose within 2 days of birth	1 dose within 3 days of birth
2003		28.7 ± 6.2%		N/A	39	N/A
2004		31.7 ± 7.2%		N/A	42	N/A
2005		28.4 ± 6.1%		N/A	45	N/A
2006	23.0 ± 5.7%	29.2 ± 6.2%	31.4 ± 6.3%	45	44	43
2007	27.3 ± 6.8%	32.2 ± 7.3%	34.3 ± 7.4%	43	45	45
2008	31.7 ± 6.6%	41.1 ± 6.9%	44.9 ± 7.1%	44	41	40
2009	33.1 ± 5.9%	38.5 ± 6.1%	39.0 ± 6.1%	47	49	48
2010	27.2 ± 5.9%	33.5 ± 6.4%	37.2 ± 6.7%	50	50	50
2011	36.2 ± 5.9%	45.1 ± 6.1%	47.3 ± 6.2%	50	50	50
2012	40.6 ± 6.7%	49.2 ± 6.7%	52.6 ± 6.9%	49	50	50
2013	46.9 ± 7.4%	57.2 ± 7.2%	59.8 ± 7.2%	45	47	46
2014	49.0 ± 7.6%	56.5 ± 7.6%	58.6 ± 7.6%	46	46	47
2015	49.2 ± 7.5%	60.3 ± 7.3%	63.9 ± 7.2%	47	47	47
2016	53.5 ± 7.5%	62.8 ± 7.3%	66.7 ± 7.1%	44	46	45
2017	47.6 ± 6.5%	57.8 ± 6.5%	60.0 ± 6.5%	48	49	49

\*No data available 2003-2005

### 2017 U.S. NATIONAL AVERAGE

Day 1: 65.7 ± 1.6%  
Day 2: 72.0 ± 1.6%  
Day 3: 73.6 ± 1.6%

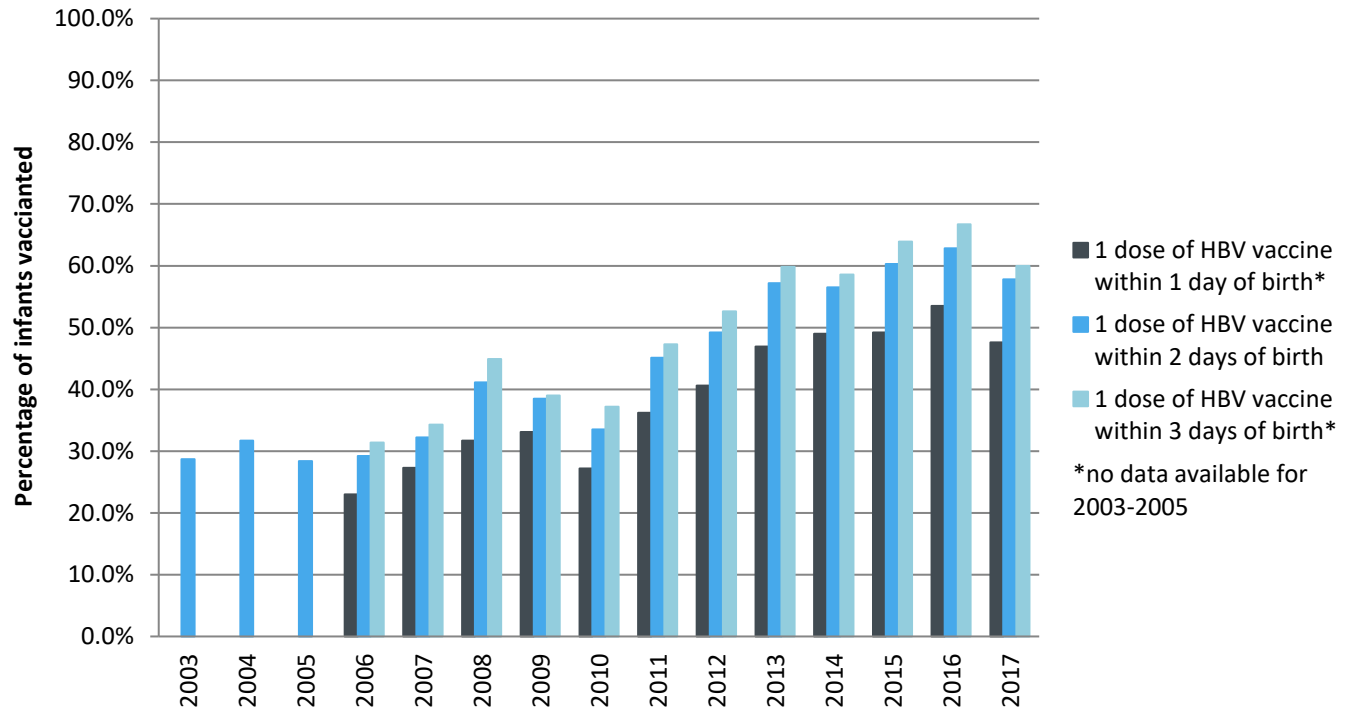
### 2017 HIGHEST BIRTH DOSE COVERAGE

Day 1: 82.0 ± 5.7% (Kentucky)  
Day 2: 84.1 ± 5.6% (Kentucky)  
Day 3: 84.1 ± 5.6% (Kentucky)

Data compiled by the ALC from National Immunization Surveys, 1995-2017<sup>1</sup>,  
<https://www.cdc.gov/vaccines/imz-managers/coverage/childvaxview/data-reports/hepb/index.html>

## GRAPH:

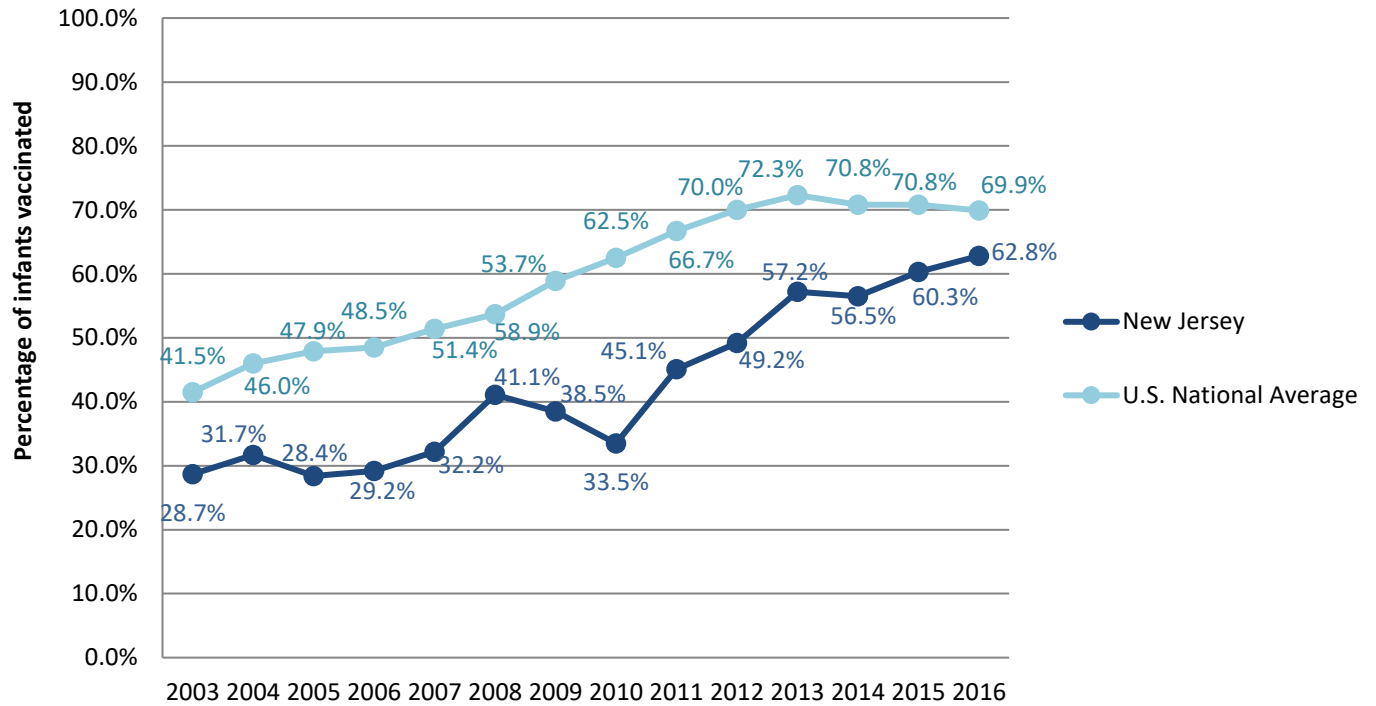
Estimated Vaccination Coverage for Hepatitis B Vaccine among Children from Birth to 3 Days of Age in New Jersey



Data compiled by the ALC from National Immunization Surveys, 1995-2017<sup>1</sup>,  
<https://www.cdc.gov/vaccines/imz-managers/coverage/childvaxview/data-reports/hepb/index.html>

## GRAPH:

### Percentage of Infants Receiving 1 Dose of Hepatitis B Vaccine within 2 Days of Birth



Data compiled by the ALC from National Immunization Surveys, 1995-2017<sup>1</sup>,  
<https://www.cdc.gov/vaccines/imz-managers/coverage/childvaxview/data-reports/hepb/index.html>

<sup>1</sup> The data from the National Immunization Surveys constitute a composite of data from children who were 19-35 months of age at the time of the survey. Therefore, the data might reflect a different estimate from the states' own birth cohort data.