

NEW HAMPSHIRE

CONTACT THE STAFF

COORDINATOR:

Janice Houston, RN, BSN
Email: Janice.Houston@dhhs.nh.us
Phone: 603-271-2013
Fax: 603-271-3850

ADDRESS:

New Hampshire Department of Health and
Human Services
29 Hazen Drive
Concord, NH 03301-6504

SECONDARY COORDINATOR:

Suzanne Allison, RN, BSN
Email: sallison@dhhs.state.nh.us
Phone: 603-271-3572
Fax: 603-271-3850

SCREENING REQUIREMENTS

Does the jurisdiction require screening of pregnant women for hepatitis B infection or hepatitis B surface antigen (HBsAg)?

Yes - N.H. Code Admin. R. Ann., Mid 502.03

Does the jurisdiction specifically require reporting of positive HBsAg status in pregnant women?

Yes - N.H. Code Admin. R. Ann. He-P 301.02

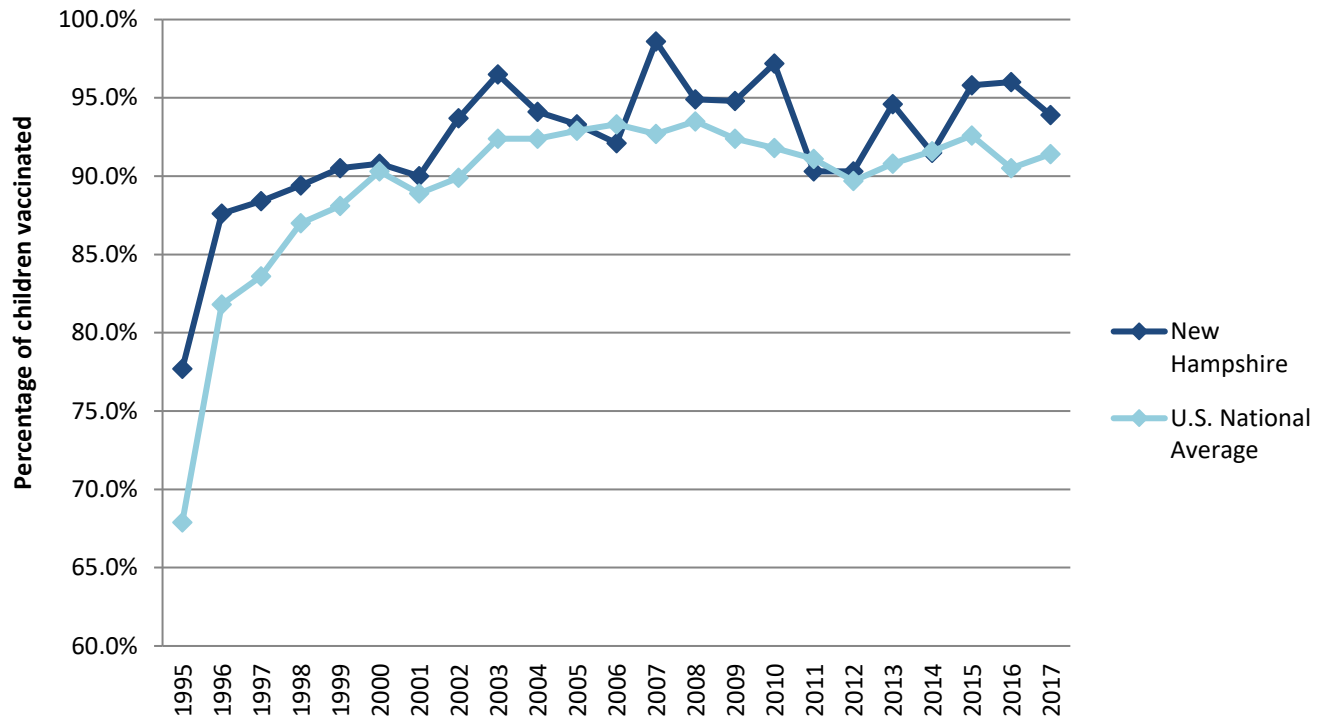
COMPLETION OF HEPATITIS B VACCINATION SERIES

3 or more doses among children 19-35 months of age

	Percentage of children 19-35 months of age receiving 3 or more doses	Rank among other states	U.S. National Average	#1 ranked state and coverage
1995	77.7 ± 5.7%	7	67.9 ± 1.3%	88.5 ± 5.4% (South Carolina)
1996	87.6 ± 3.8%	7	81.8 ± 0.9%	95.8 ± 2.2% (South Carolina)
1997	88.4 ± 3.8%	6	83.6 ± 0.8%	91.6 ± 4.2% (New Jersey)
1998	89.4 ± 3.6%	14	87.0 ± 0.7%	94.1 ± 2.7% (South Carolina)
1999	90.5 ± 3.9%	19	88.1 ± 0.7%	94.0 ± 3.1% (Rhode Island)
2000	90.8 ± 3.4%	22	90.3 ± 0.6%	96.4 ± 1.9% (Rhode Island)
2001	90.0 ± 3.5%	18	88.9 ± 0.7%	95.8 ± 2.2% (Rhode Island)
2002	93.7 ± 3.1%	3	89.9 ± 0.7%	97.0 ± 2.0% (Rhode Island)
2003	96.5 ± 2.4%	4	92.4 ± 0.6%	98.2 ± 1.4% (Connecticut)
2004	94.1 ± 3.8%	17	92.4 ± 0.6%	96.8 ± 1.7% (Florida)
2005	93.3 ± 4.0%	21	92.9 ± 0.6%	97.9 ± 2.0% (Massachusetts)
2006	92.1 ± 3.9%	34	93.3 ± 0.6%	97.8 ± 1.6% (Rhode Island)
2007	98.6 ± 1.5%	1	92.7 ± 0.7%	98.6 ± 1.5% (New Hampshire)
2008	94.9 ± 2.8%	12	93.5 ± 0.7%	98.1 ± 1.6% (Connecticut)
2009	94.8 ± 2.9%	16	92.4 ± 0.7%	98.8 ± 1.5% (Rhode Island)
2010	97.2 ± 1.8%	4	91.8 ± 0.7%	98.3 ± 1.5% (North Dakota)
2011	90.3 ± 4.3%	33	91.1 ± 0.7%	97.1 ± 1.7% (Louisiana)
2012	90.3 ± 4.2%	25	89.7 ± 0.9%	96.3 ± 3.0% (Georgia)
2013	94.6 ± 3.1%	5	90.8 ± 1.0%	96.7 ± 2.3% (Rhode Island)
2014	91.5 ± 4.5%	32	91.6 ± 0.9%	97.6 ± 1.8% (Louisiana)
2015	95.8 ± 3.4%	7	92.6 ± 0.7%	97.3 ± 2.3% (Connecticut)
2016	96.0 ± 2.6%	4	90.5 ± 1.1%	97.4 ± 1.9% (Iowa)
2017	93.9 ± 3.8%	8	91.4 ± 0.9%	97.7 ± 1.6% (North Dakota)

GRAPH:

Percentage of Children 19-35 Months of Age Receiving 3 or More Doses of Hepatitis B Vaccine



HEPATITIS B BIRTH DOSE VACCINATION COVERAGE

1 or more dose among infants within 3 days of birth

	Percentage of infants receiving			Rank among other states according to		
	1 dose within 1 day of birth*	1 dose within 2 days of birth	1 dose within 3 days of birth*	1 dose within 1 day of birth	1 dose within 2 days of birth	1 dose within 3 days of birth
2003		69.6 ± 6.0%		N/A	6	N/A
2004		66.5 ± 7.0%		N/A	11	N/A
2005		55.2 ± 7.0%		N/A	23	N/A
2006	34.8 ± 7.3%	61.9 ± 7.1%	69.4 ± 6.7%	38	17	11
2007	26.9 ± 7.6%	59.4 ± 8.4%	67.3 ± 7.9%	44	26	16
2008	34.2 ± 6.4%	61.5 ± 6.4%	69.0 ± 6.0%	40	27	10
2009	30.3 ± 6.5%	58.3 ± 7.2%	63.7 ± 7.1%	49	33	26
2010	29.3 ± 6.7%	55.2 ± 8.0%	62.8 ± 7.8%	49	43	34
2011	37.7 ± 7.8%	66.4 ± 7.2%	70.7 ± 6.9%	49	35	30
2012	34.1 ± 6.9%	65.1 ± 7.0%	72.2 ± 6.6%	50	40	30
2013	41.4 ± 7.5%	65.5 ± 7.1%	74.1 ± 6.5%	47	39	31
2014	41.8 ± 7.4%	64.8 ± 7.3%	72.8 ± 6.8%	49	42	35
2015	46.0 ± 7.8%	66.5 ± 7.4%	72.0 ± 7.0%	49	40	32
2016	38.4 ± 7.4%	64.9 ± 6.9%	73.1 ± 6.2%	50	41	26
2017	30.8 ± 6.4%	63.1 ± 7.0%	67.2 ± 7.0%	50	46	44

*No data available 2003-2005

2017 U.S. NATIONAL AVERAGE

Day 1: 65.7 ± 1.6%
Day 2: 72.0 ± 1.6%
Day 3: 73.6 ± 1.6%

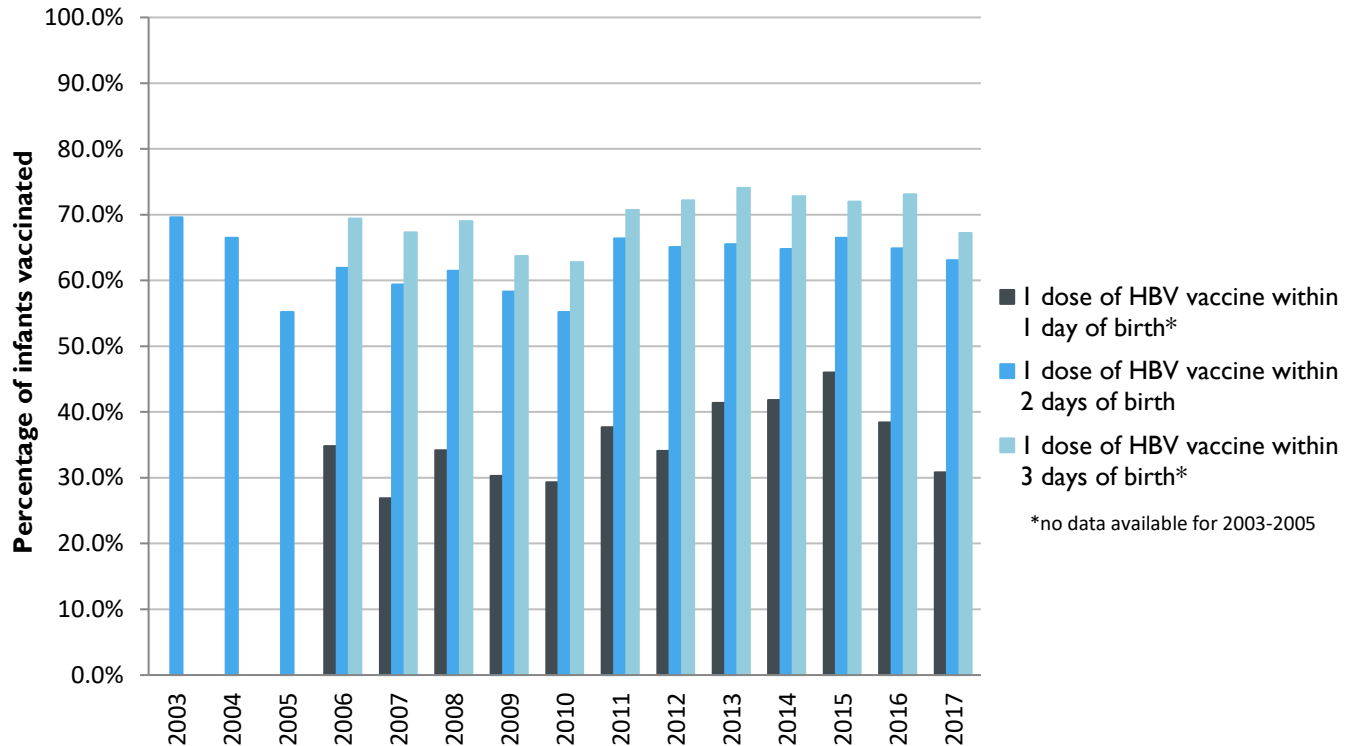
2017 HIGHEST BIRTH DOSE COVERAGE

Day 1: 82.0 ± 5.7% (Kentucky)
Day 2: 84.1 ± 5.6% (Kentucky)
Day 3: 84.1 ± 5.6% (Kentucky)

Data compiled by the ALC from National Immunization Surveys, 1995-2017¹,
<https://www.cdc.gov/vaccines/imz-managers/coverage/childvaxview/data-reports/hepb/index.html>

GRAPH:

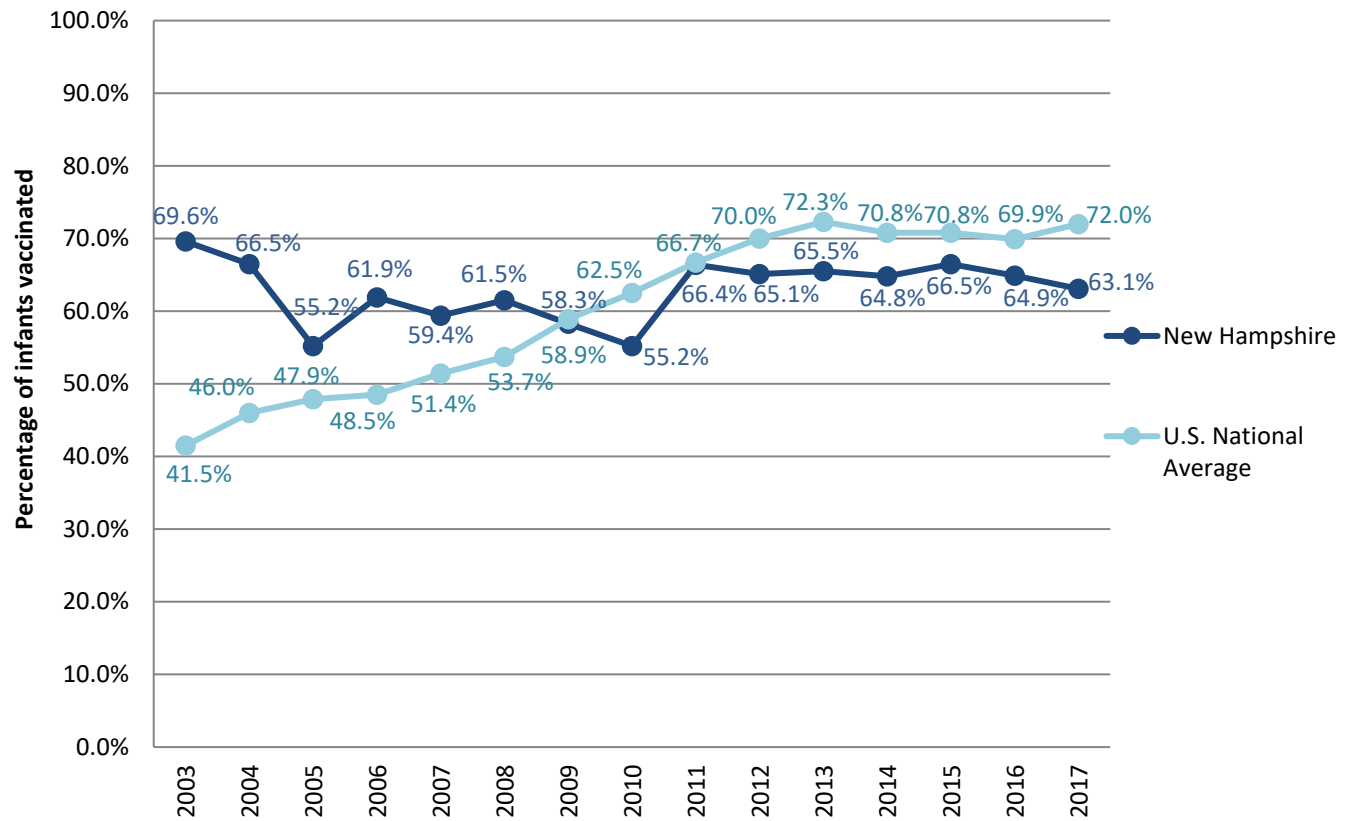
Estimated Vaccination Coverage for Hepatitis B Vaccine among Children from Birth to 3 Days of Age in New Hampshire



Data compiled by the ALC from National Immunization Surveys, 1995-2017¹,
<https://www.cdc.gov/vaccines/imz-managers/coverage/childvaxview/data-reports/hepb/index.html>

GRAPH:

Percentage of Infants Receiving 1 Dose of Hepatitis B Vaccine within 2 Days of Birth



Data compiled by the ALC from National Immunization Surveys, 1995-2017¹,
<https://www.cdc.gov/vaccines/imz-managers/coverage/childvaxview/data-reports/hepb/index.html>

¹ The data from the National Immunization Surveys constitute a composite of data from children who were 19-35 months of age at the time of the survey. Therefore, the data might reflect a different estimate from the states' own birth cohort data.