

NEVADA

CONTACT THE STAFF

STATE COORDINATOR

Ali Garcia
Email: aligarcia@health.nv.gov
Phone: 775-684-5289
Fax: 775-850-1144

ADDRESS:

Nevada State Health Division
500 Damonte Ranch Pkwy, Suite 657
Reno, NV 89521

EPIDEMIOLOGY

Rick Sowadsky
Phone: 775-684-5941
Fax: 775-684-5999 C

SOUTHERN NEVADA HEALTH DISTRICT COORDINATOR:

Simone Kreiger, RN, BSN
Phone: 702-759-0871
Fax: 702-759-1455

ADDRESS:

625 Shadow Lane
P.O. Box 3902
Las Vegas, NV 89127

WASHOE COUNTY COORDINATOR:

Melissa Peek, BS
Email: mpeek@washoecounty.us
Phone: 775-328-2447
Fax: 775-328-3764 C

ADDRESS:

1001 E. 9th Street, Building B
P.O. Box 11130
Reno, NV 89520-0027

SCREENING REQUIREMENTS

Does the jurisdiction require screening of pregnant women for hepatitis B infection or hepatitis B surface antigen (HBsAg)?

Yes - Nev. Admin. Code ch. 441A, § 570

Does the jurisdiction specifically require reporting of positive HBsAg status in pregnant women?

Yes - Nev. Admin. Code ch. 441A, § 570

COMPLETION OF HEPATITIS B VACCINATION SERIES

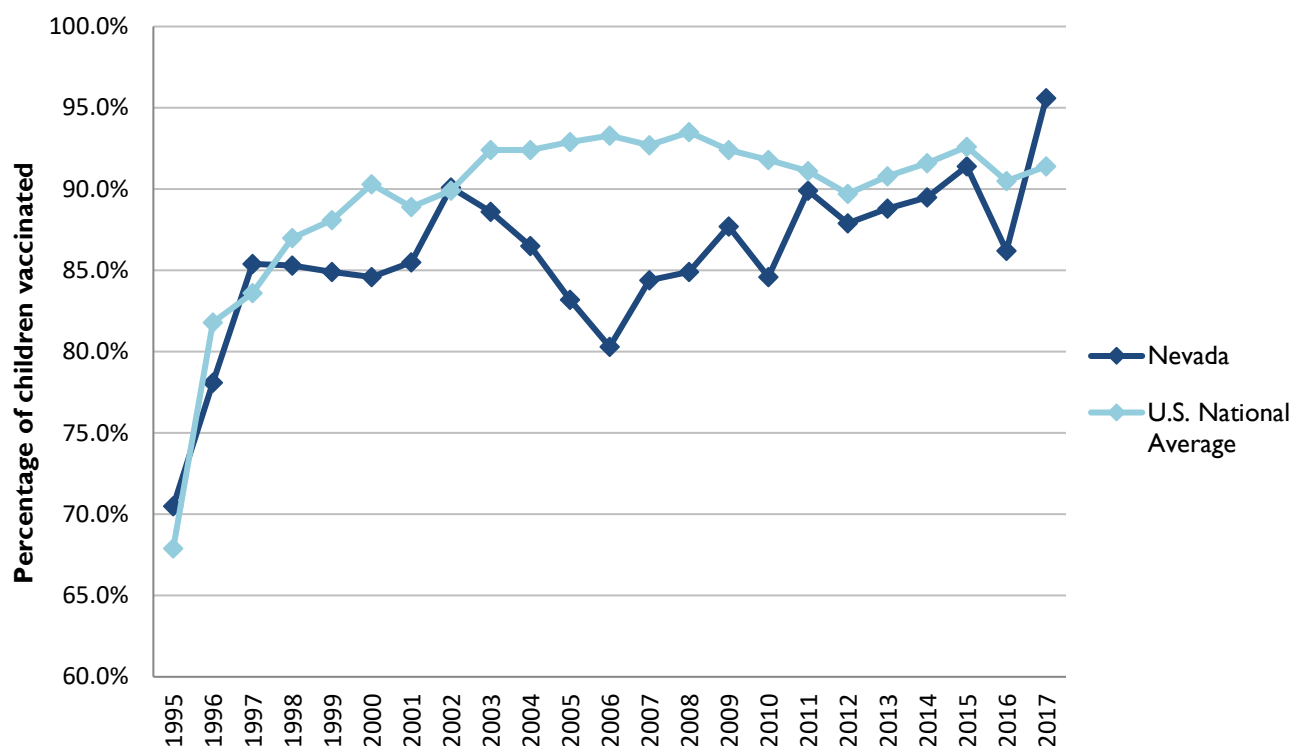
3 or more doses among children 19-35 months of age

	Percentage of children 19-35 months of age receiving 3 or more doses	Rank among other states	U.S. National Average	#1 ranked state and coverage
1995	70.5 ± 6.8%	19	67.9 ± 1.3%	88.5 ± 5.4% (South Carolina)
1996	78.1 ± 6.4%	39	81.8 ± 0.9%	95.8 ± 2.2% (South Carolina)
1997	85.4 ± 4.6%	22	83.6 ± 0.8%	91.6 ± 4.2% (New Jersey)
1998	85.3 ± 5.0%	36	87.0 ± 0.7%	94.1 ± 2.7% (South Carolina)
1999	84.9 ± 4.6%	42	88.1 ± 0.7%	94.0 ± 3.1% (Rhode Island)
2000	84.6 ± 4.2%	48	90.3 ± 0.6%	96.4 ± 1.9% (Rhode Island)
2001	85.5 ± 4.5%	43	88.9 ± 0.7%	95.8 ± 2.2% (Rhode Island)
2002	90.1 ± 4.6%	31	89.9 ± 0.7%	97.0 ± 2.0% (Rhode Island)
2003	88.6 ± 4.4%	48	92.4 ± 0.6%	98.2 ± 1.4% (Connecticut)
2004	86.5 ± 4.4%	50	92.4 ± 0.6%	96.8 ± 1.7% (Florida)
2005	83.2 ± 4.7%	49	92.9 ± 0.6%	97.9 ± 2.0% (Massachusetts)
2006	80.3 ± 6.2%	51	93.3 ± 0.6%	97.8 ± 1.6% (Rhode Island)
2007	84.4 ± 5.5%	51	92.7 ± 0.7%	98.6 ± 1.5% (New Hampshire)
2008	84.9 ± 4.9%	51	93.5 ± 0.7%	98.1 ± 1.6% (Connecticut)
2009	87.7 ± 4.3%	48	92.4 ± 0.7%	98.8 ± 1.5% (Rhode Island)
2010	84.6 ± 5.3%	51	91.8 ± 0.7%	98.3 ± 1.5% (North Dakota)
2011	89.9 ± 5.0%	36	91.1 ± 0.7%	97.1 ± 1.7% (Louisiana)
2012	87.9 ± 4.3%	42	89.7 ± 0.9%	96.3 ± 3.0% (Georgia)
2013	88.8 ± 4.2%	39	90.8 ± 1.0%	96.7 ± 2.3% (Rhode Island)
2014	89.5 ± 4.5%	22	91.6 ± 0.9%	97.6 ± 1.8% (Louisiana)
2015	91.4 ± 3.2%	38	92.6 ± 0.7%	97.3 ± 2.3% (Connecticut)
2016	86.2 ± 5.9%	47	90.5 ± 1.1%	97.4 ± 1.9% (Iowa)
2017	95.6 ± 2.4%	4	91.4 ± 0.9%	97.7 ± 1.6% (North Dakota)

Data compiled by the ALC from National Immunization Surveys, 1995-2017¹,
<https://www.cdc.gov/vaccines/imz-managers/coverage/childvaxview/data-reports/hepb/index.html>

GRAPH:

Percentage of Children 19-35 Months of Age Receiving 3 or More Doses of Hepatitis B Vaccine



Data compiled by the ALC from National Immunization Surveys, 1995-2017¹,
<https://www.cdc.gov/vaccines/imz-managers/coverage/childvaxview/data-reports/hepb/index.html>

HEPATITIS B BIRTH DOSE VACCINATION COVERAGE

1 or more dose among infants within 3 days of birth

	Percentage of infants receiving			Rank among other states according to		
	1 dose within 1 day of birth*	1 dose within 2 days of birth	1 dose within 3 days of birth*	1 dose within 1 day of birth	1 dose within 2 days of birth	1 dose within 3 days of birth
2003		56.7 ± 6.5%		N/A	19	N/A
2004		65.0 ± 6.1%		N/A	13	N/A
2005		54.8 ± 6.0%		N/A	25	N/A
2006	56.5 ± 7.3%	56.5 ± 7.3%	56.7 ± 7.3%	13	25	27
2007	62.7 ± 7.2%	63.0 ± 7.2%	63.4 ± 7.2%	11	17	20
2008	64.1 ± 6.7%	64.6 ± 6.7%	65.5 ± 6.6%	7	18	22
2009	71.5 ± 5.9%	72.3 ± 5.8%	72.3 ± 5.8%	4	8	9
2010	63.9 ± 7.0%	65.6 ± 6.9%	66.6 ± 6.9%	13	23	28
2011	62.8 ± 8.8%	65.1 ± 8.8%	65.2 ± 8.8%	26	36	39
2012	67.6 ± 6.4%	70.3 ± 6.3%	70.5 ± 6.3%	19	27	34
2013	73.5 ± 5.7%	75.1 ± 5.6%	75.4 ± 5.6%	26	36	39
2014	71.0 ± 6.7%	74.8 ± 6.4%	75.5 ± 6.4%	21	25	25
2015	75.9 ± 6.9%	77.7 ± 6.8%	77.7 ± 6.8%	6	11	17
2016	67.7 ± 7.5%	70.4 ± 7.3%	72.0 ± 7.1%	20	28	32
2017	76.2 ± 6.7%	80.2 ± 6.2%	80.6 ± 6.1%	4	5	7

*No data available 2003-2005

2017 U.S. NATIONAL AVERAGE

Day 1: 65.7 ± 1.6%
Day 2: 72.0 ± 1.6%
Day 3: 73.6 ± 1.6%

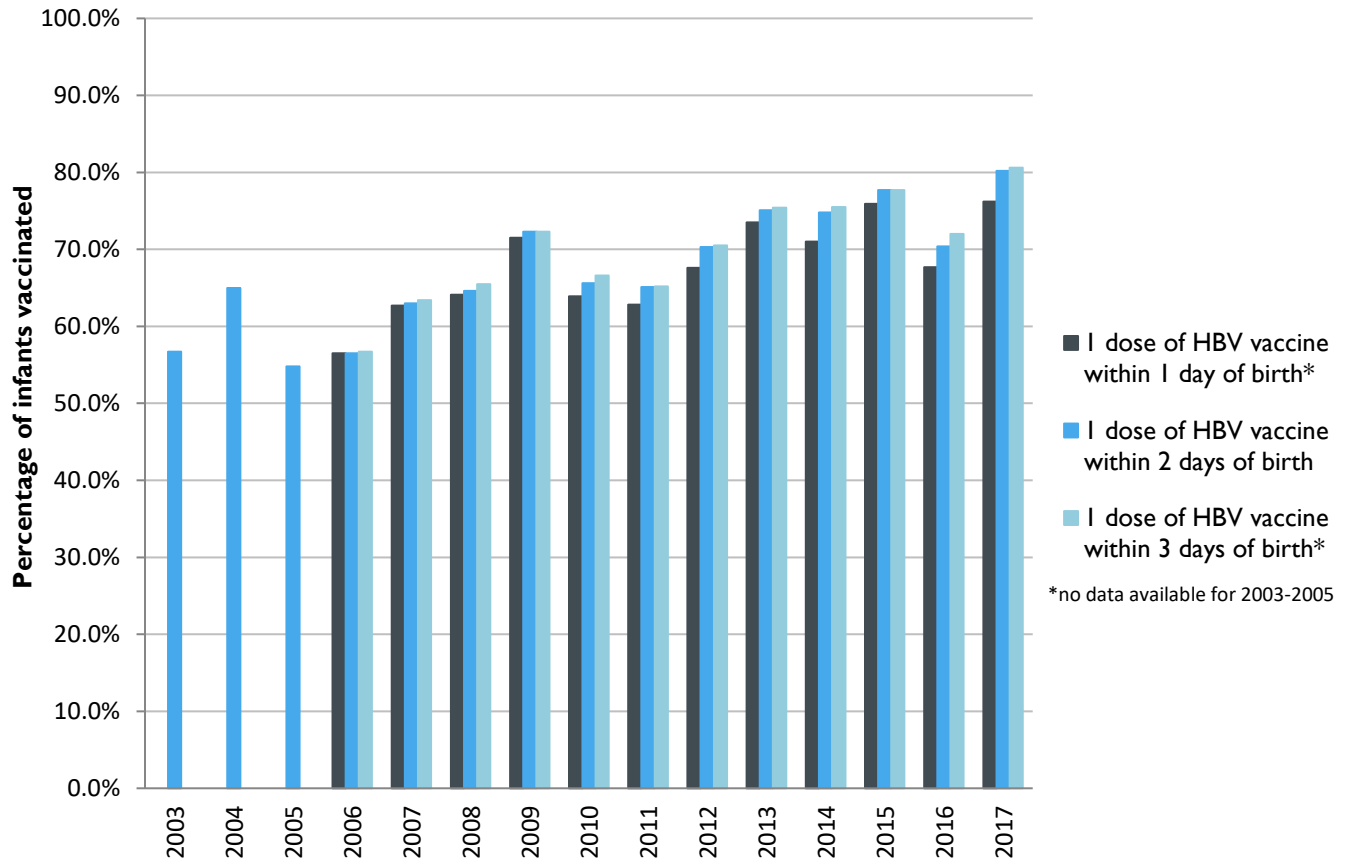
2017 HIGHEST BIRTH DOSE COVERAGE

Day 1: 82.0 ± 5.7% (Kentucky)
Day 2: 84.1 ± 5.6% (Kentucky)
Day 3: 84.1 ± 5.6% (Kentucky)

Data compiled by the ALC from National Immunization Surveys, 1995-2017¹,
<https://www.cdc.gov/vaccines/imz-managers/coverage/childvaxview/data-reports/hepb/index.html>

GRAPH:

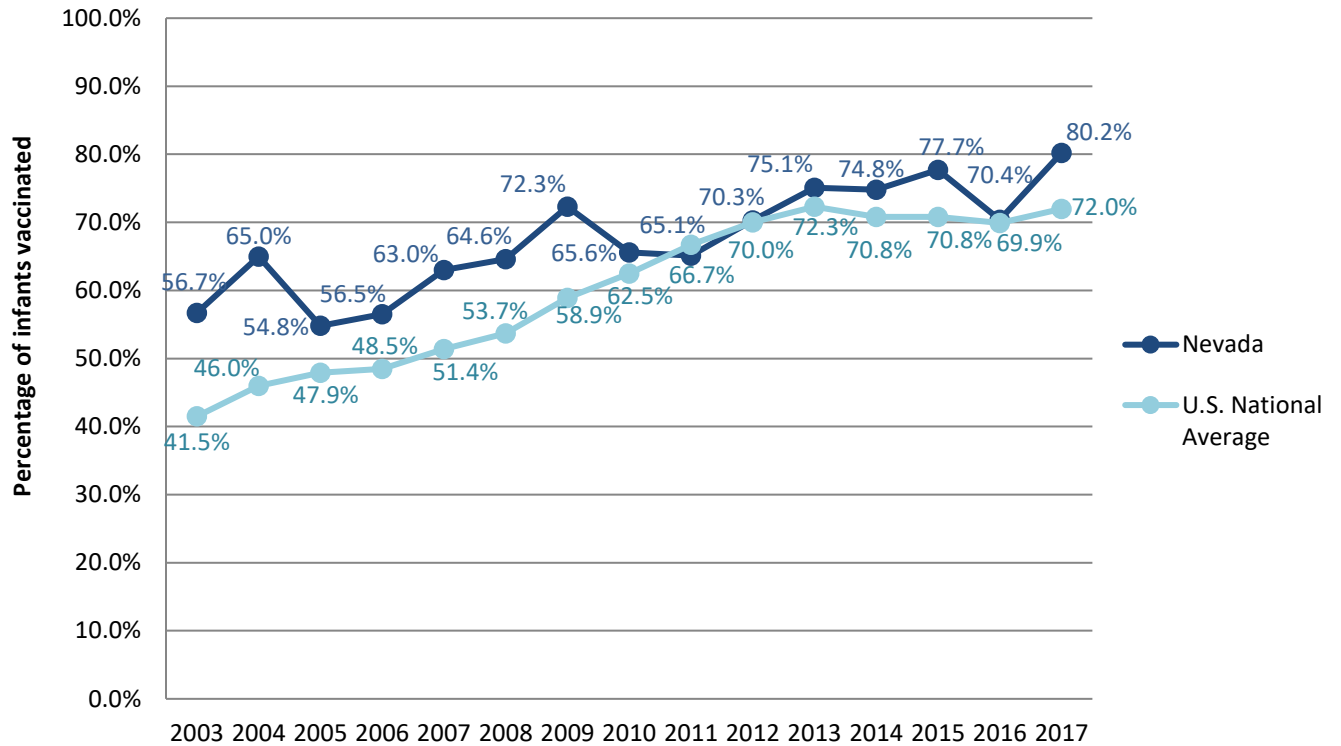
Estimated Vaccination Coverage for Hepatitis B Vaccine among Children from Birth to 3 Days of Age in Nevada



Data compiled by the ALC from National Immunization Surveys, 1995-2017¹,
<https://www.cdc.gov/vaccines/imz-managers/coverage/childvaxview/data-reports/hepb/index.html>

GRAPH:

Percentage of Infants Receiving 1 Dose of Hepatitis B Vaccine within 2 Days of Birth



Data compiled by the ALC from National Immunization Surveys, 1995-2017¹,
<https://www.cdc.gov/vaccines/imz-managers/coverage/childvaxview/data-reports/hepb/index.html>

¹ The data from the National Immunization Surveys constitute a composite of data from children who were 19-35 months of age at the time of the survey. Therefore, the data might reflect a different estimate from the states' own birth cohort data.