

NEBRASKA

CONTACT THE STAFF

COORDINATOR:

Blake Hendrickson
Email: Blake.Hendrickson@nebraska.gov
Phone: 402-471-6450
Cell: 402-310-3707
Fax: 402-471-3601

ADDRESS:

Nebraska Department of Health Immunization
Program
P.O. Box 95026
Lincoln, NE 68508

SCREENING REQUIREMENTS

Does the jurisdiction require screening of pregnant women for hepatitis B infection or hepatitis B surface antigen (HBsAg)?

No

Does the jurisdiction specifically require reporting of positive HBsAg status in pregnant women?

No

COMPLETION OF HEPATITIS B VACCINATION SERIES

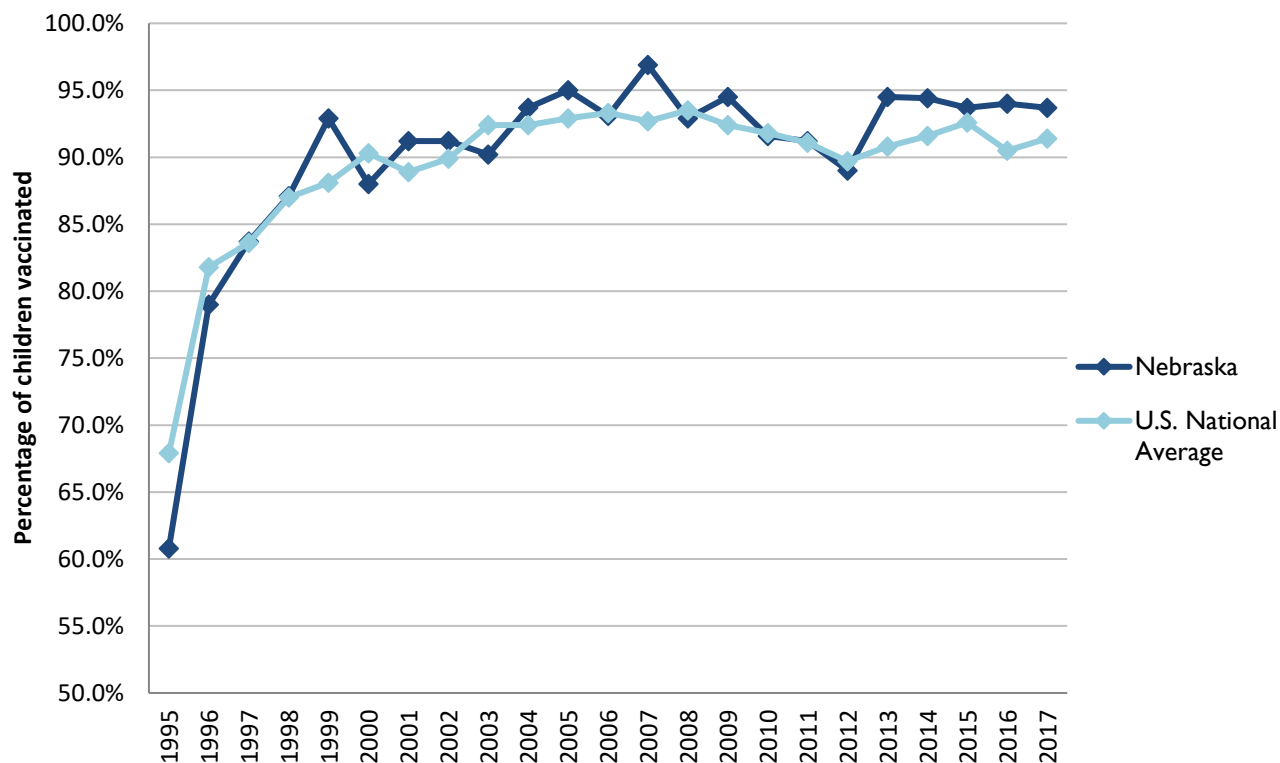
3 or more doses among children 19-35 months of age

	Percentage of children 19-35 months of age receiving 3 or more doses	Rank among other states	U.S. National Average	#1 ranked state and coverage
1995	60.8 ± 7.1%	35	67.9 ± 1.3%	88.5 ± 5.4% (South Carolina)
1996	79.0 ± 4.7%	37	81.8 ± 0.9%	95.8 ± 2.2% (South Carolina)
1997	83.7 ± 4.3%	29	83.6 ± 0.8%	91.6 ± 4.2% (New Jersey)
1998	87.1 ± 3.9%	25	87.0 ± 0.7%	94.1 ± 2.7% (South Carolina)
1999	92.9 ± 3.2%	5	88.1 ± 0.7%	94.0 ± 3.1% (Rhode Island)
2000	88.0 ± 4.3%	40	90.3 ± 0.6%	96.4 ± 1.9% (Rhode Island)
2001	91.2 ± 3.5%	11	88.9 ± 0.7%	95.8 ± 2.2% (Rhode Island)
2002	91.2 ± 4.2%	23	89.9 ± 0.7%	97.0 ± 2.0% (Rhode Island)
2003	90.2 ± 4.4%	40	92.4 ± 0.6%	98.2 ± 1.4% (Connecticut)
2004	93.7 ± 3.3%	23	92.4 ± 0.6%	96.8 ± 1.7% (Florida)
2005	95.0 ± 3.0%	10	92.9 ± 0.6%	97.9 ± 2.0% (Massachusetts)
2006	93.1 ± 4.0%	28	93.3 ± 0.6%	97.8 ± 1.6% (Rhode Island)
2007	96.9 ± 2.9%	6	92.7 ± 0.7%	98.6 ± 1.5% (New Hampshire)
2008	92.9 ± 3.4%	31	93.5 ± 0.7%	98.1 ± 1.6% (Connecticut)
2009	94.5 ± 3.0%	17	92.4 ± 0.7%	98.8 ± 1.5% (Rhode Island)
2010	91.6 ± 4.2%	31	91.8 ± 0.7%	98.3 ± 1.5% (North Dakota)
2011	91.2 ± 4.5%	25	91.1 ± 0.7%	97.1 ± 1.7% (Louisiana)
2012	89.0 ± 4.6%	35	89.7 ± 0.9%	96.3 ± 3.0% (Georgia)
2013	94.5 ± 2.8%	6	90.8 ± 1.0%	96.7 ± 2.3% (Rhode Island)
2014	94.4 ± 3.6%	14	91.6 ± 0.9%	97.6 ± 1.8% (Louisiana)
2015	93.7 ± 3.2%	20	92.6 ± 0.7%	97.3 ± 2.3% (Connecticut)
2016	94.0 ± 4.4%	15	90.5 ± 1.1%	97.4 ± 1.9% (Iowa)
2017	93.7 ± 3.5%	12	91.4 ± 0.9%	97.7 ± 1.6% (North Dakota)

Data compiled by the ALC from National Immunization Surveys, 1995-2017¹,
<https://www.cdc.gov/vaccines/imz-managers/coverage/childvaxview/data-reports/hepb/index.html>

GRAPH:

Percentage of Children 19-35 Months of Age Receiving 3 or More Doses of Hepatitis B Vaccine



Data compiled by the ALC from National Immunization Surveys, 1995-2017¹, <https://www.cdc.gov/vaccines/imz-managers/coverage/childvaxview/data-reports/hepb/index.html>

HEPATITIS B BIRTH DOSE VACCINATION COVERAGE

1 or more dose among infants within 3 days of birth

	Percentage of infants receiving			Rank among other states according to		
	1 dose within 1 day of birth*	1 dose within 2 days of birth	1 dose within 3 days of birth*	1 dose within 1 day of birth	1 dose within 2 days of birth	1 dose within 3 days of birth
2003		10.2 ± 4.1%		N/A	50	N/A
2004		14.7 ± 4.7%		N/A	50	N/A
2005		15.5 ± 5.7%		N/A	50	N/A
2006	13.3 ± 4.6%	14.2 ± 4.6%	14.2 ± 4.6%	50	51	51
2007	16.6 ± 6.0%	17.3 ± 6.1%	17.3 ± 6.1%	49	51	51
2008	27.8 ± 5.8%	29.6 ± 5.9%	31.0 ± 6.0%	48	48	49
2009	42.8 ± 7.4%	44.5 ± 7.4%	45.4 ± 7.4%	43	48	47
2010	60.7 ± 7.2%	64.5 ± 7.0%	66.7 ± 6.9%	21	27	28
2011	71.7 ± 6.6%	77.5 ± 6.1%	77.5 ± 6.1%	9	9	11
2012	76.7 ± 5.9%	78.8 ± 5.8%	79.4 ± 5.8%	4	9	10
2013	71.7 ± 6.6%	77.5 ± 6.1%	77.5 ± 6.1%	9	9	11
2014	75.1 ± 6.0%	80.0 ± 5.4%	81.3 ± 5.3%	5	9	11
2015	66.6 ± 7.1%	71.0 ± 7.0%	72.5 ± 6.8%	24	27	30
2016	76.5 ± 6.4%	78.6 ± 6.3%	79.3 ± 6.2%	2	5	5
2017	80.7 ± 5.8%	82.4 ± 5.8%	83.1 ± 5.7%	2	3	3

*No data available 2003-2005

2017 U.S. NATIONAL AVERAGE

Day 1: 65.7 ± 1.6%
Day 2: 72.0 ± 1.6%
Day 3: 73.6 ± 1.6%

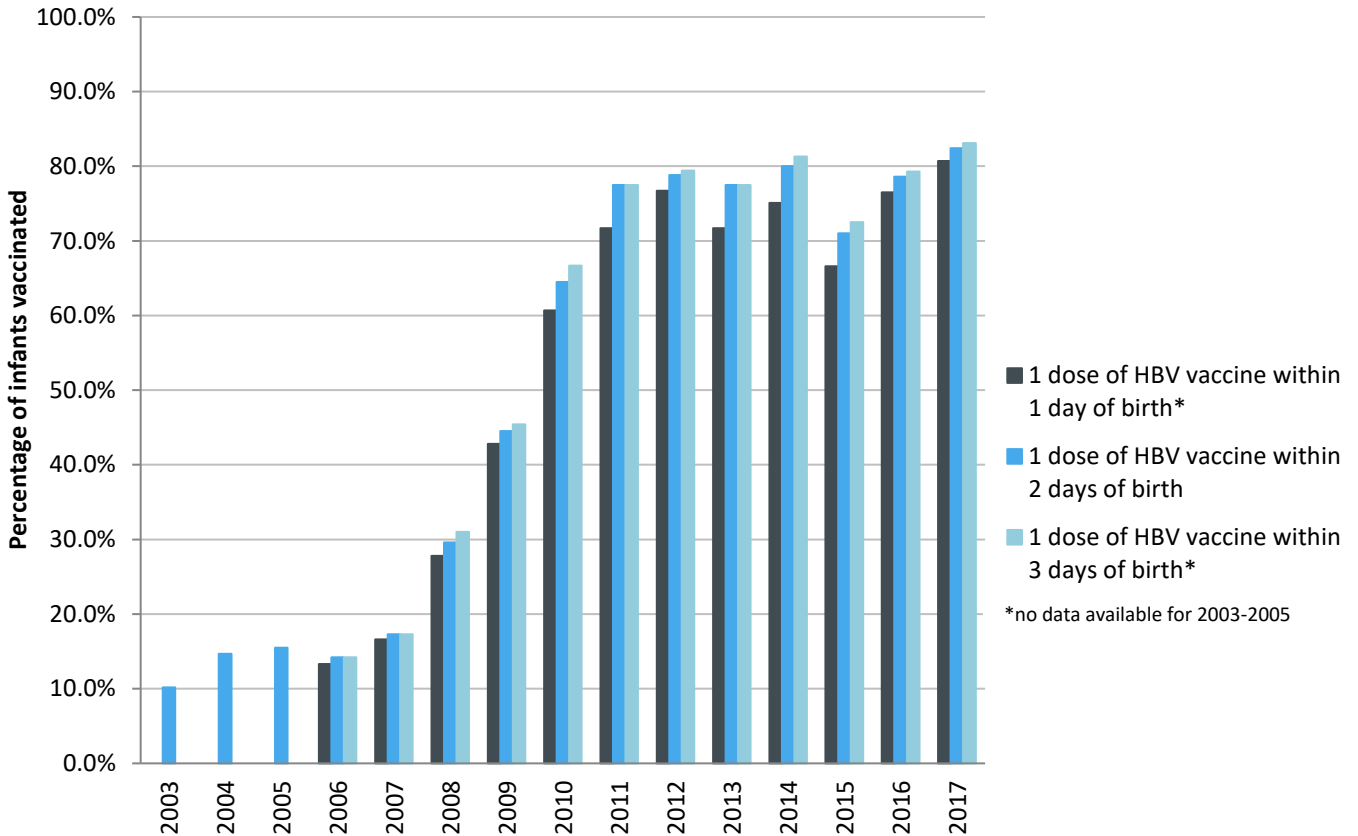
2017 HIGHEST BIRTH DOSE COVERAGE

Day 1: 82.0 ± 5.7% (Kentucky)
Day 2: 84.1 ± 5.6% (Kentucky)
Day 3: 84.1 ± 5.6% (Kentucky)

Data compiled by the ALC from National Immunization Surveys, 1995-2017¹,
<https://www.cdc.gov/vaccines/imz-managers/coverage/childvaxview/data-reports/hepb/index.html>

GRAPH:

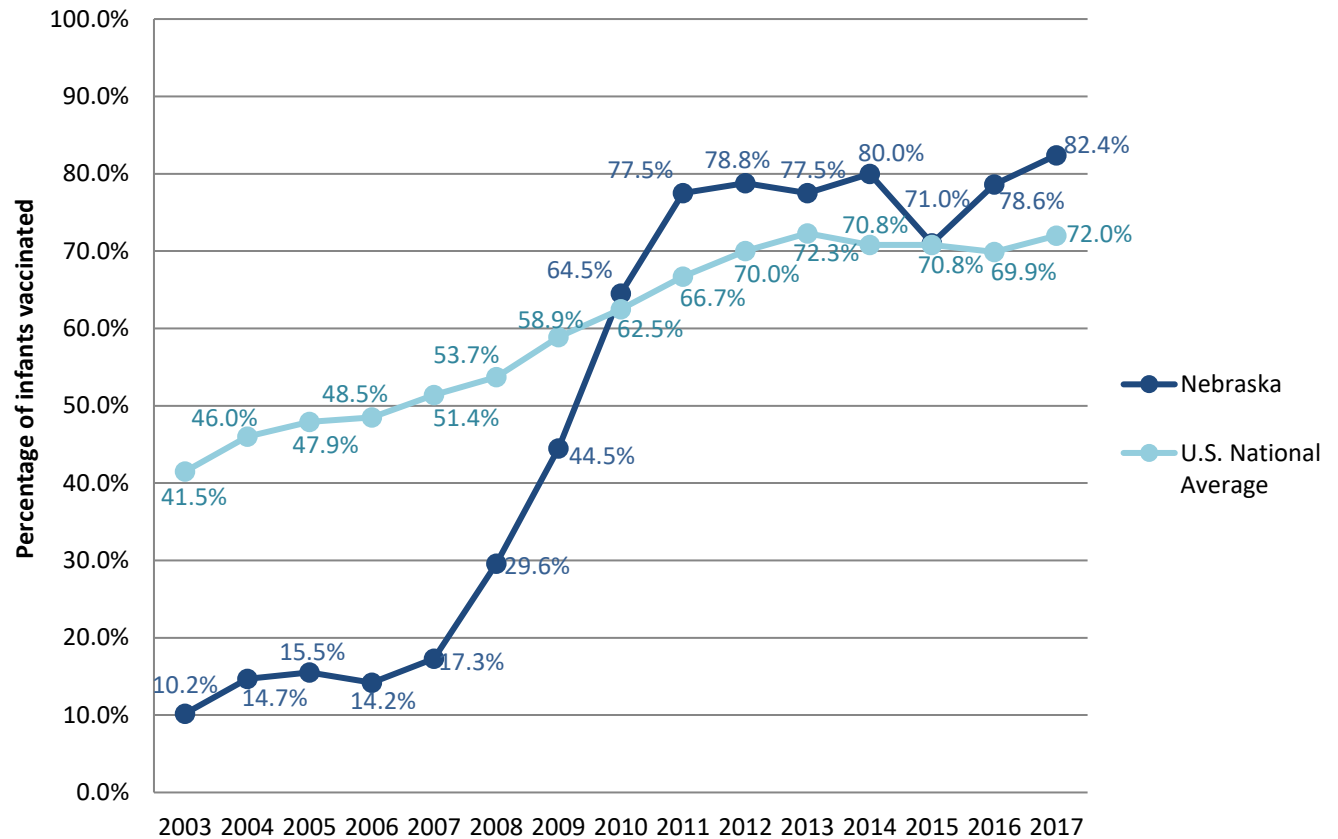
Estimated Vaccination Coverage for Hepatitis B Vaccine among Children from Birth to 3 Days of Age in Nebraska



Data compiled by the ALC from National Immunization Surveys, 1995-2017¹,
<https://www.cdc.gov/vaccines/imz-managers/coverage/childvaxview/data-reports/hepb/index.html>

GRAPH:

Percentage of Infants Receiving 1 Dose of Hepatitis B Vaccine within 2 Days of Birth



Data compiled by the ALC from National Immunization Surveys, 1995-2017¹,
<https://www.cdc.gov/vaccines/imz-managers/coverage/childvaxview/data-reports/hepb/index.html>

¹ The data from the National Immunization Surveys constitute a composite of data from children who were 19-35 months of age at the time of the survey. Therefore, the data might reflect a different estimate from the states' own birth cohort data.