

MONTANA

CONTACT THE STAFF

COORDINATOR:

Susan Reeser, RN
Email: SReeser@mt.gov
Phone: 406-444-1805
Fax: 406-444-2920

ADDRESS:

MT DPHHS Immunization Program
1400 Broadway, RM C211
Helena, MT 59620

SCREENING REQUIREMENTS

Does the jurisdiction require screening of pregnant women for hepatitis B infection or hepatitis B surface antigen (HBsAg)?

Yes - Mont. Code Ann. § 50-19-103

Does the jurisdiction specifically require reporting of positive HBsAg status in pregnant women?

Yes - Mont. Code Ann. § 50-19-105

COMPLETION OF HEPATITIS B VACCINATION SERIES

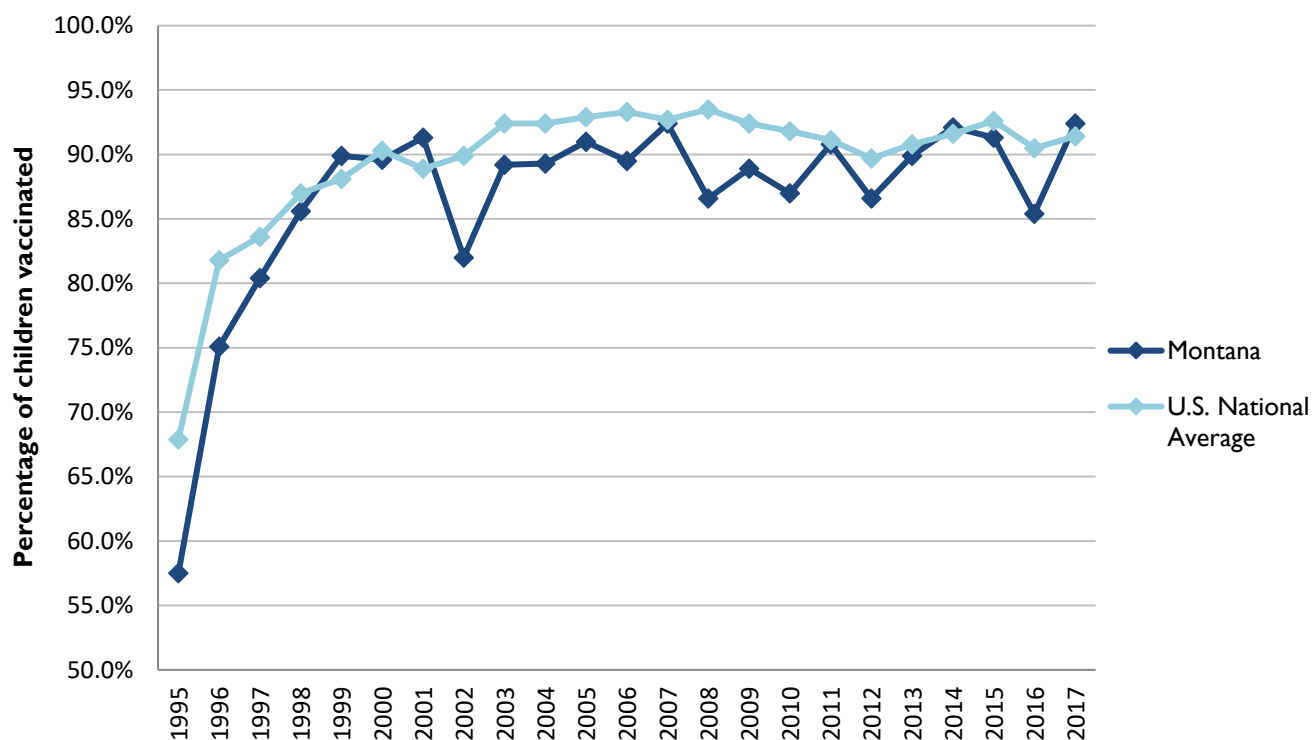
3 or more doses among children 19-35 months of age

	Percentage of children 19-35 months of age receiving 3 or more doses	Rank among other states	U.S. National Average	#1 ranked state and coverage
1995	57.5 ± 6.9%	37	67.9 ± 1.3%	88.5 ± 5.4% (South Carolina)
1996	75.1 ± 5.2%	42	81.8 ± 0.9%	95.8 ± 2.2% (South Carolina)
1997	80.4 ± 4.7%	43	83.6 ± 0.8%	91.6 ± 4.2% (New Jersey)
1998	85.6 ± 4.0%	34	87.0 ± 0.7%	94.1 ± 2.7% (South Carolina)
1999	89.9 ± 3.6%	24	88.1 ± 0.7%	94.0 ± 3.1% (Rhode Island)
2000	89.6 ± 3.9%	31	90.3 ± 0.6%	96.4 ± 1.9% (Rhode Island)
2001	91.3 ± 3.5%	10	88.9 ± 0.7%	95.8 ± 2.2% (Rhode Island)
2002	82.0 ± 5.7%	51	89.9 ± 0.7%	97.0 ± 2.0% (Rhode Island)
2003	89.2 ± 4.1%	47	92.4 ± 0.6%	98.2 ± 1.4% (Connecticut)
2004	89.3 ± 4.6%	45	92.4 ± 0.6%	96.8 ± 1.7% (Florida)
2005	91.0 ± 4.5%	37	92.9 ± 0.6%	97.9 ± 2.0% (Massachusetts)
2006	89.5 ± 4.6%	47	93.3 ± 0.6%	97.8 ± 1.6% (Rhode Island)
2007	92.4 ± 3.8%	33	92.7 ± 0.7%	98.6 ± 1.5% (New Hampshire)
2008	86.6 ± 5.4%	50	93.5 ± 0.7%	98.1 ± 1.6% (Connecticut)
2009	88.9 ± 4.4%	43	92.4 ± 0.7%	98.8 ± 1.5% (Rhode Island)
2010	87.0 ± 4.4%	48	91.8 ± 0.7%	98.3 ± 1.5% (North Dakota)
2011	90.8 ± 4.4%	29	91.1 ± 0.7%	97.1 ± 1.7% (Louisiana)
2012	86.6 ± 5.6%	45	89.7 ± 0.9%	96.3 ± 3.0% (Georgia)
2013	89.9 ± 4.6%	31	90.8 ± 1.0%	96.7 ± 2.3% (Rhode Island)
2014	92.1 ± 4.8%	27	91.6 ± 0.9%	97.6 ± 1.8% (Louisiana)
2015	91.3 ± 4.0%	38	92.6 ± 0.7%	97.3 ± 2.3% (Connecticut)
2016	85.4 ± 5.7%	49	90.5 ± 1.1%	97.4 ± 1.9% (Iowa)
2017	92.4 ± 4.3%	21	91.4 ± 0.9%	97.7 ± 1.6% (North Dakota)

Data compiled by the ALC from National Immunization Surveys, 1995-2017¹,
<https://www.cdc.gov/vaccines/imz-managers/coverage/childvaxview/data-reports/hepb/index.html>

GRAPH:

Percentage of Children 19-35 Months of Age Receiving 3 or More Doses of Hepatitis B Vaccine



Data compiled by the ALC from National Immunization Surveys, 1995-2017¹,
<https://www.cdc.gov/vaccines/imz-managers/coverage/childvaxview/data-reports/hepb/index.html>

HEPATITIS B BIRTH DOSE VACCINATION COVERAGE

1 or more dose among infants within 3 days of birth

	Percentage of infants receiving			Rank among other states according to		
	1 dose within 1 day of birth*	1 dose within 2 days of birth	1 dose within 3 days of birth*	1 dose within 1 day of birth	1 dose within 2 days of birth	1 dose within 3 days of birth
2003		45.5 ± 6.6%		N/A	28	N/A
2004		45.5 ± 6.6%		N/A	22	N/A
2005		62.2 ± 6.7%		N/A	13	N/A
2006	54.4 ± 6.7%	60.4 ± 6.6%	61.4 ± 6.6%	18	20	22
2007	64.9 ± 6.7%	70.0 ± 6.4%	70.9 ± 6.3%	8	10	12
2008	62.4 ± 6.8%	65.6 ± 6.6%	66.4 ± 6.6%	12	14	20
2009	61.5 ± 7.4%	64.5 ± 7.2%	65.2 ± 7.2%	14	21	25
2010	63.8 ± 6.7%	66.8 ± 6.5%	67.8 ± 6.4%	14	20	23
2011	75.3 ± 6.7%	80.5 ± 5.9%	81.1 ± 5.9%	4	6	7
2012	58.7 ± 7.1%	62.4 ± 7.0%	64.5 ± 6.8%	36	43	43
2013	69.7 ± 7.1%	72.0 ± 7.0%	73.9 ± 6.8%	21	32	33
2014	67.9 ± 8.2%	70.7 ± 8.1%	71.4 ± 8.0%	26	35	38
2015	70.2 ± 6.8%	72.4 ± 6.7%	73.8 ± 6.5%	17	24	25
2016	61.2 ± 7.1%	66.5 ± 6.9%	67.0 ± 6.9%	35	39	44
2017	67.9 ± 7.6%	71.9 ± 7.3%	72.7 ± 7.3%	28	33	33

*No data available 2003-2005

2017 U.S. NATIONAL AVERAGE

Day 1: 65.7 ± 1.6%
Day 2: 72.0 ± 1.6%
Day 3: 73.6 ± 1.6%

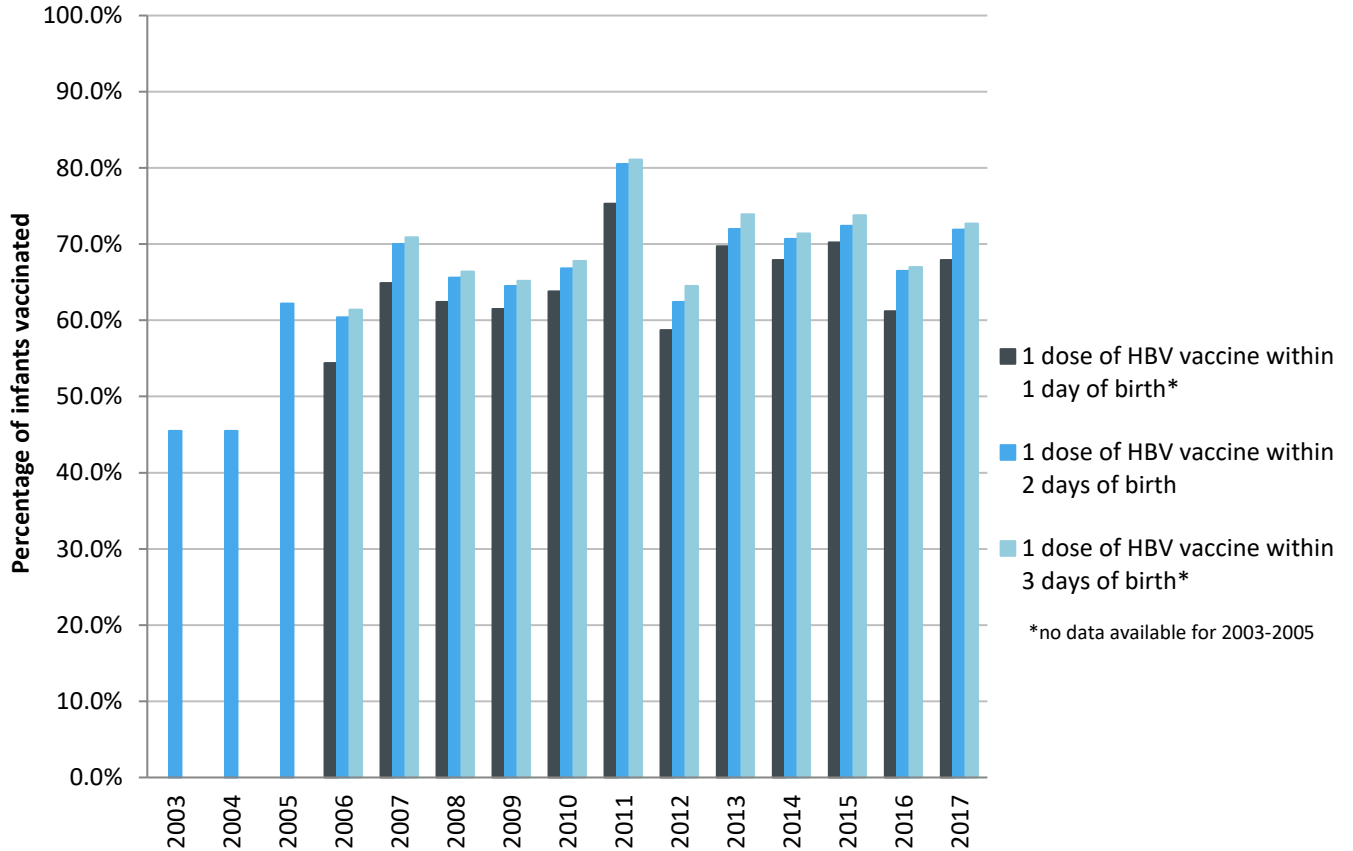
2017 HIGHEST BIRTH DOSE COVERAGE

Day 1: 82.0 ± 5.7% (Kentucky)
Day 2: 84.1 ± 5.6% (Kentucky)
Day 3: 84.1 ± 5.6% (Kentucky)

Data compiled by the ALC from National Immunization Surveys, 1995-2017¹,
<https://www.cdc.gov/vaccines/imz-managers/coverage/childvaxview/data-reports/hepb/index.html>

GRAPH:

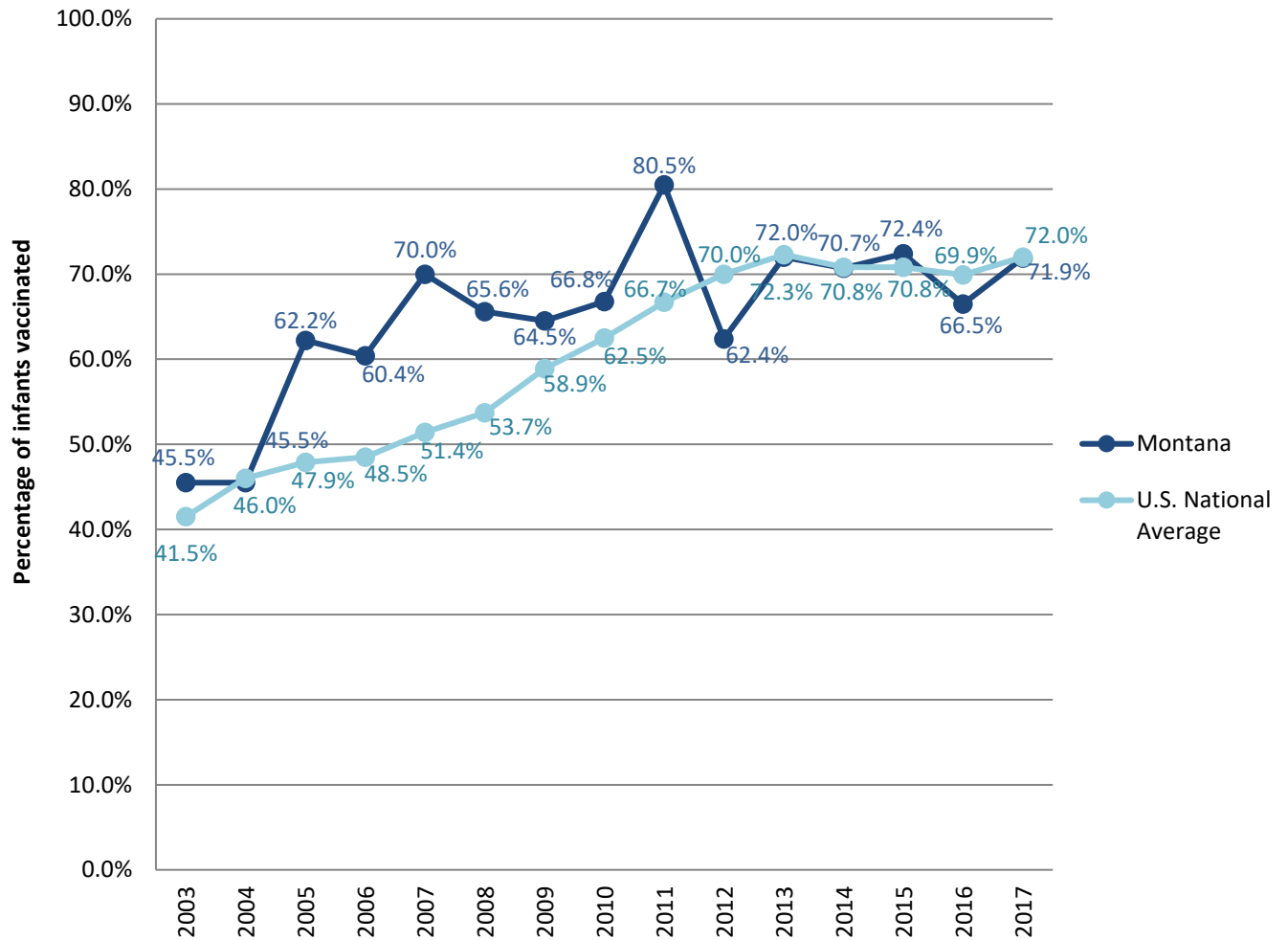
Estimated Vaccination Coverage for Hepatitis B Vaccine among Children from Birth to 3 Days of Age in Montana



Data compiled by the ALC from National Immunization Surveys, 1995-2017¹,
<https://www.cdc.gov/vaccines/imz-managers/coverage/childvaxview/data-reports/hepb/index.html>

GRAPH:

Percentage of Infants Receiving 1 Dose of Hepatitis B Vaccine within 2 Days of Birth



Data compiled by the ALC from National Immunization Surveys, 1995-2017¹, <https://www.cdc.gov/vaccines/imz-managers/coverage/childvaxview/data-reports/hepb/index.html>

¹ The data from the National Immunization Surveys constitute a composite of data from children who were 19-35 months of age at the time of the survey. Therefore, the data might reflect a different estimate from the states' own birth cohort data.