

# MISSOURI

---

## CONTACT THE STAFF

### COORDINATOR:

Tricia Cregger, CPH  
Email: [Tricia.Cregger@health.mo.gov](mailto:Tricia.Cregger@health.mo.gov)  
Phone: 573-526-1465  
Fax: 573-751-6447

### ADDRESS:

Missouri Dept. of Health and Senior Services  
Bureau of HIV/STD/Hepatitis  
P.O. Box 570  
Jefferson City, MO 65102-0570

## PERINATAL CASE MANAGEMENT

### COORDINATOR:

Tricia Sneller  
Email: [tricia.sneller@health.mo.gov](mailto:tricia.sneller@health.mo.gov)  
Phone: 573-751-6439

---

## SCREENING REQUIREMENTS

Does the jurisdiction require screening of pregnant women for hepatitis B infection or hepatitis B surface antigen (HBsAg)?

**Yes** - Mo. Rev. Stat. § 210.030

Does the jurisdiction specifically require reporting of positive HBsAg status in pregnant women?

**Yes** - Mo. Rev. Stat. § 210.040 and Mo. Code Regs. Ann. tit. 19, § 20-20.020

---

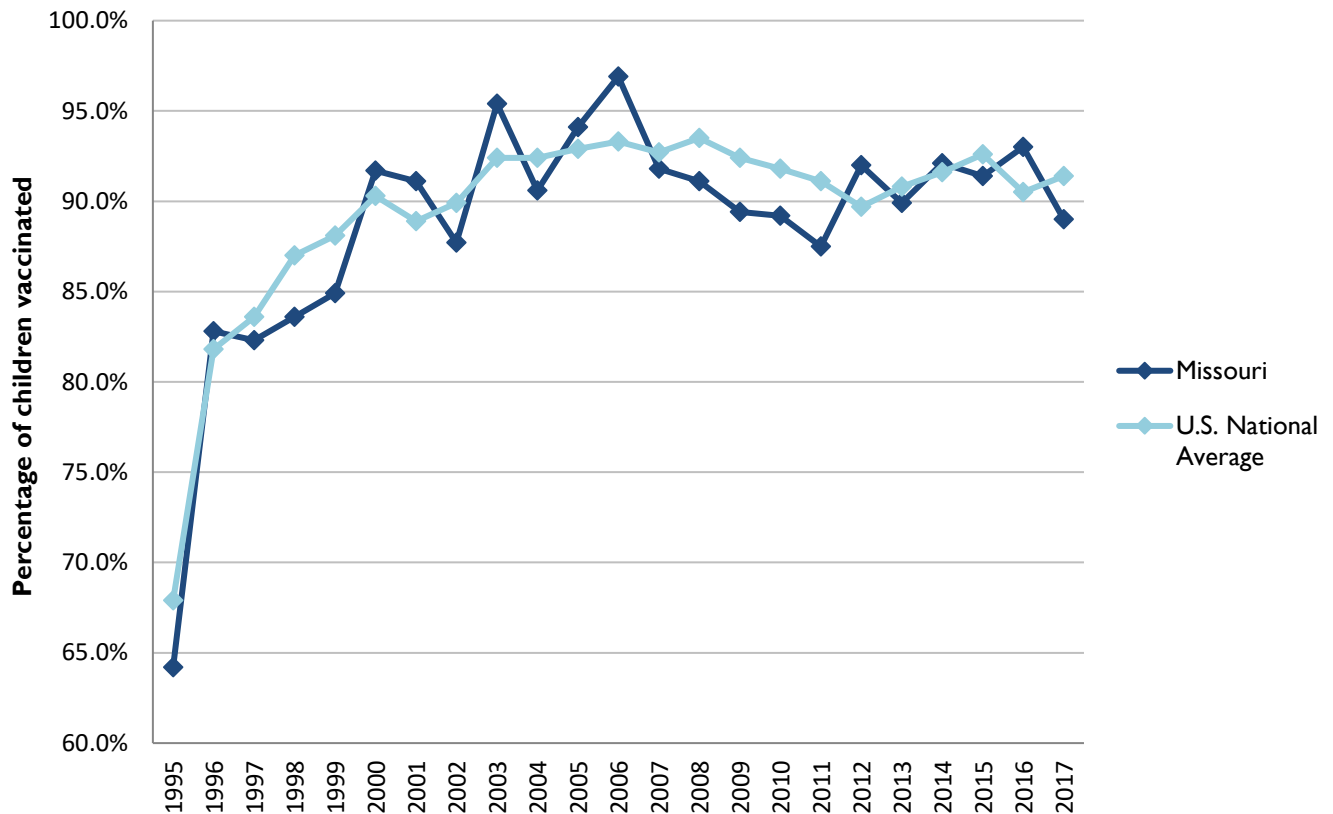
## COMPLETION OF HEPATITIS B VACCINATION SERIES

3 or more doses among children 19-35 months of age

	Percentage of children 19-35 months of age receiving 3 or more doses	Rank among other states	U.S. National Average	#1 ranked state and coverage
1995	64.2 ± 7.6%	32	67.9 ± 1.3%	88.5 ± 5.4% (South Carolina)
1996	82.8 ± 5.5%	22	81.8 ± 0.9%	95.8 ± 2.2% (South Carolina)
1997	82.3 ± 5.0%	34	83.6 ± 0.8%	91.6 ± 4.2% (New Jersey)
1998	83.6 ± 5.5%	41	87.0 ± 0.7%	94.1 ± 2.7% (South Carolina)
1999	84.9 ± 4.4%	43	88.1 ± 0.7%	94.0 ± 3.1% (Rhode Island)
2000	91.7 ± 3.7%	15	90.3 ± 0.6%	96.4 ± 1.9% (Rhode Island)
2001	91.1 ± 3.7%	14	88.9 ± 0.7%	95.8 ± 2.2% (Rhode Island)
2002	87.7 ± 5.1%	43	89.9 ± 0.7%	97.0 ± 2.0% (Rhode Island)
2003	95.4 ± 2.6%	7	92.4 ± 0.6%	98.2 ± 1.4% (Connecticut)
2004	90.6 ± 4.1%	40	92.4 ± 0.6%	96.8 ± 1.7% (Florida)
2005	94.1 ± 2.5%	17	92.9 ± 0.6%	97.9 ± 2.0% (Massachusetts)
2006	96.9 ± 2.4%	3	93.3 ± 0.6%	97.8 ± 1.6% (Rhode Island)
2007	91.8 ± 4.6%	38	92.7 ± 0.7%	98.6 ± 1.5% (New Hampshire)
2008	91.1 ± 4.2%	46	93.5 ± 0.7%	98.1 ± 1.6% (Connecticut)
2009	89.4 ± 5.0%	40	92.4 ± 0.7%	98.8 ± 1.5% (Rhode Island)
2010	89.2 ± 4.0%	43	91.8 ± 0.7%	98.3 ± 1.5% (North Dakota)
2011	87.5 ± 4.5%	44	91.1 ± 0.7%	97.1 ± 1.7% (Louisiana)
2012	92.0 ± 4.3%	14	89.7 ± 0.9%	96.3 ± 3.0% (Georgia)
2013	92.7 ± 3.4%	16	90.8 ± 1.0%	96.7 ± 2.3% (Rhode Island)
2014	92.6 ± 3.9%	22	91.6 ± 0.9%	97.6 ± 1.8% (Louisiana)
2015	91.4 ± 4.7%	35	92.6 ± 0.7%	97.3 ± 2.3% (Connecticut)
2016	93.0 ± 3.6%	21	90.5 ± 1.1%	97.4 ± 1.9% (Iowa)
2017	89.0 ± 5.1%	44	91.4 ± 0.9%	97.7 ± 1.6% (North Dakota)

## GRAPH:

Percentage of Children 19-35 Months of Age Receiving 3 or More Doses of Hepatitis B Vaccine



## HEPATITIS B BIRTH DOSE VACCINATION COVERAGE

1 or more dose among infants within 3 days of birth

	Percentage of infants receiving			Rank among other states according to		
	1 dose within 1 day of birth*	1 dose within 2 days of birth	1 dose within 3 days of birth*	1 dose within 1 day of birth	1 dose within 2 days of birth	1 dose within 3 days of birth
2003		41.9 ± 6.5%		N/A	30	N/A
2004		48.6 ± 7.8%		N/A	29	N/A
2005		48.0 ± 5.8%		N/A	32	N/A
2006	48.2 ± 7.0%	50.9 ± 6.9%	52.4 ± 6.9%	25	31	31
2007	42.8 ± 7.8%	52.6 ± 7.9%	54.1 ± 7.9%	33	32	33
2008	45.4 ± 6.8%	54.1 ± 6.7%	56.2 ± 6.6%	31	36	35
2009	50.0 ± 6.9%	54.7 ± 6.9%	59.9 ± 6.7%	33	37	34
2010	59.5 ± 6.6%	64.1 ± 6.5%	64.8 ± 6.5%	24	30	32
2011	64.9 ± 6.3%	71.0 ± 6.0%	72.9 ± 5.8%	20	22	22
2012	71.0 ± 7.0%	77.4 ± 6.4%	78.7 ± 6.2%	12	13	12
2013	74.0 ± 6.9%	76.7 ± 6.8%	79.2 ± 6.3%	10	18	17
2014	70.9 ± 7.9%	80.8 ± 6.7%	80.9 ± 6.7%	23	7	9
2015	67.4 ± 7.9%	73.4 ± 7.6%	75.0 ± 7.4%	22	23	24
2016	62.7 ± 8.0%	70.3 ± 7.5%	73.3 ± 7.2%	32	29	25
2017	69.7 ± 7.1%	77.4 ± 6.3%	80.4 ± 5.8%	22	14	8

\*No data available 2003-2005

### 2017 U.S. NATIONAL AVERAGE

Day 1: 65.7 ± 1.6%  
Day 2: 72.0 ± 1.6%  
Day 3: 73.6 ± 1.6%

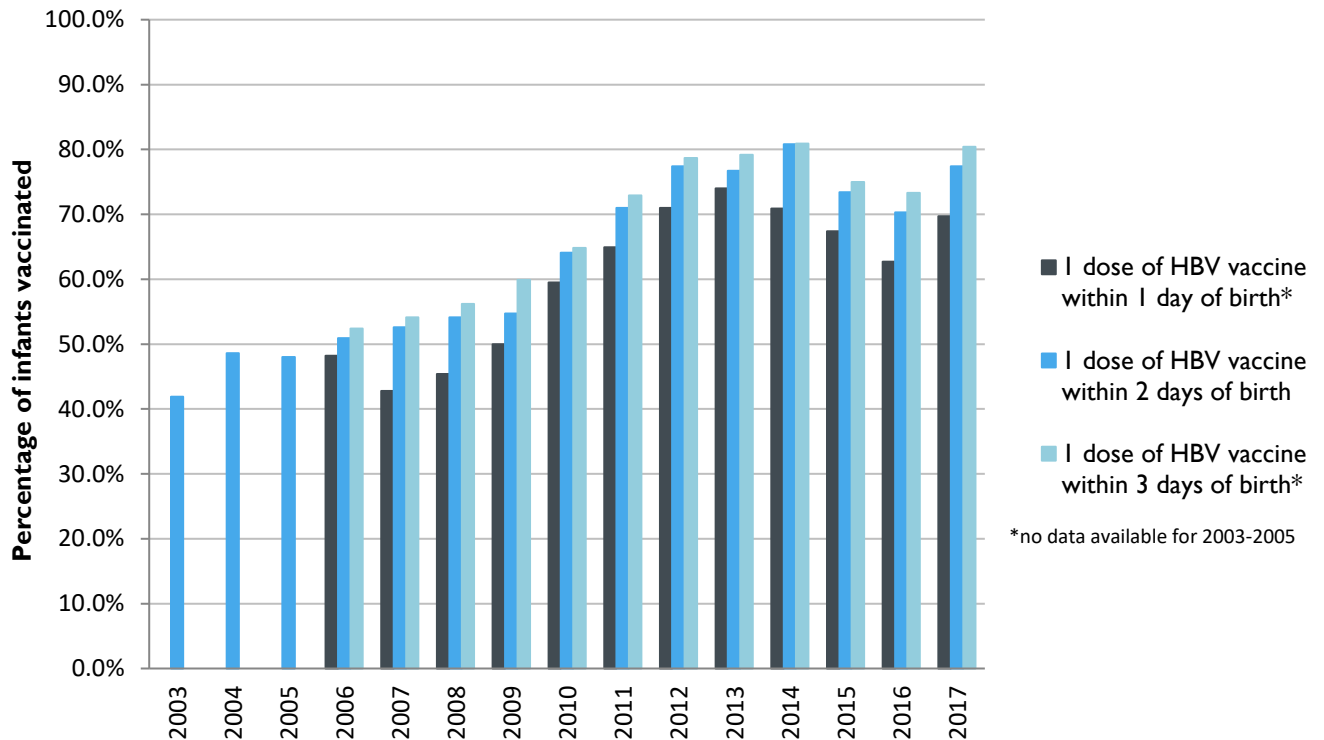
### 2017 HIGHEST BIRTH DOSE COVERAGE

Day 1: 82.0 ± 5.7% (Kentucky)  
Day 2: 84.1 ± 5.6% (Kentucky)  
Day 3: 84.1 ± 5.6% (Kentucky)

Data compiled by the ALC from National Immunization Surveys, 1995-2017<sup>1</sup>,  
<https://www.cdc.gov/vaccines/imz-managers/coverage/childvaxview/data-reports/hepb/index.html>

## GRAPH:

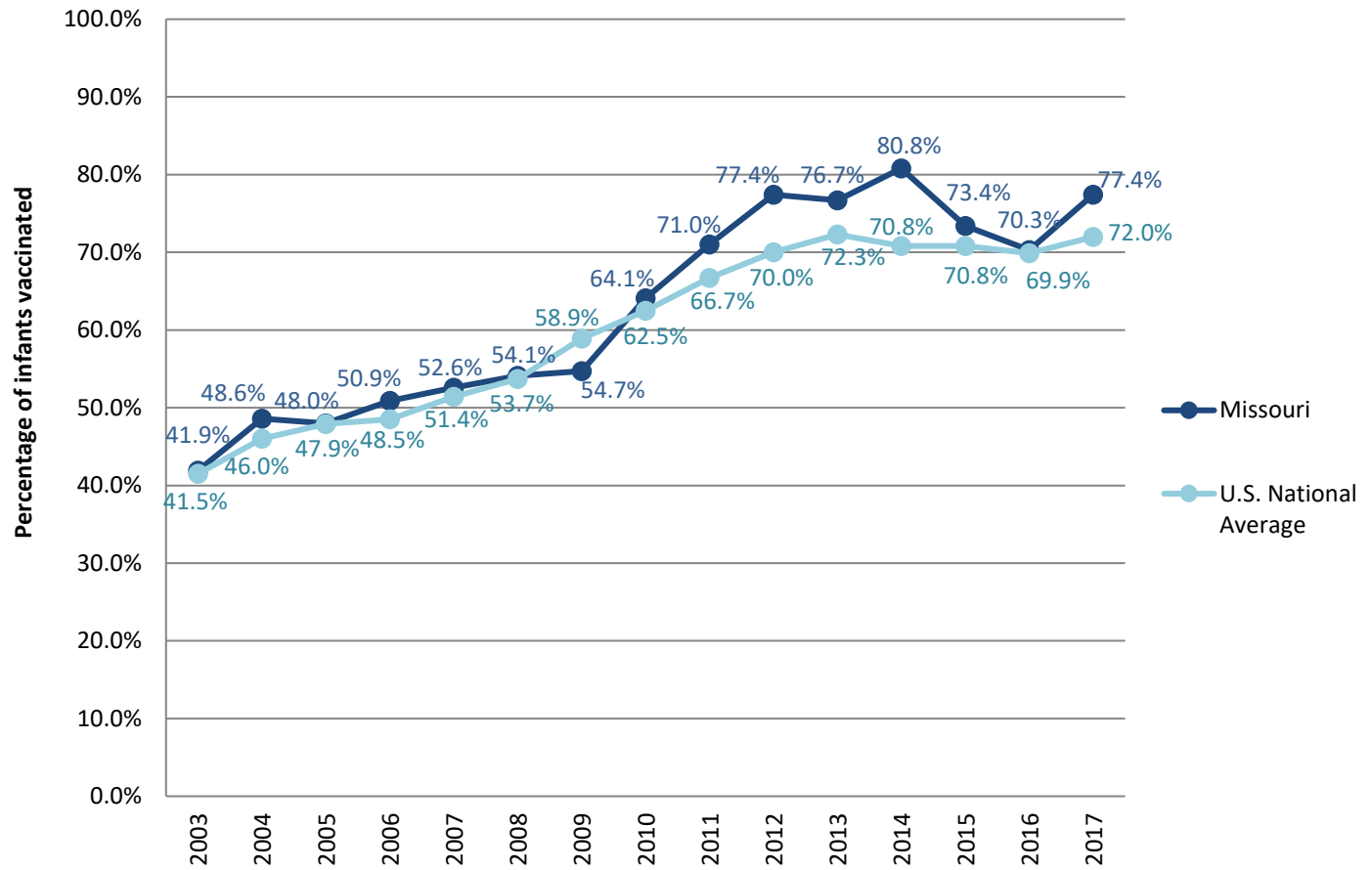
Estimated Vaccination Coverage for Hepatitis B Vaccine among Children from Birth to 3 Days of Age in Missouri



Data compiled by the ALC from National Immunization Surveys, 1995-2017<sup>1</sup>,  
<https://www.cdc.gov/vaccines/imz-managers/coverage/childvaxview/data-reports/hepb/index.html>

## GRAPH:

### Percentage of Infants Receiving 1 Dose of Hepatitis B Vaccine within 2 Days of Birth



Data compiled by the ALC from National Immunization Surveys, 1995-2017<sup>1</sup>,  
<https://www.cdc.gov/vaccines/imz-managers/coverage/childvaxview/data-reports/hepb/index.html>

<sup>1</sup> The data from the National Immunization Surveys constitute a composite of data from children who were 19-35 months of age at the time of the survey. Therefore, the data might reflect a different estimate from the states' own birth cohort data.