

# MISSISSIPPI

## CONTACT THE STAFF

### COORDINATOR:

Alfredia Johnson  
Email: [Alfredia.johnson@msdh.ms.gov](mailto:Alfredia.johnson@msdh.ms.gov)  
Phone: 601-576-7767  
Fax: 601-576-7663

### ADDRESS:

Mississippi State Dept. of Health  
Immunization Program  
570 East Woodrow Wilson, Suite O-350  
P.O. Box 1700  
Jackson, MS 39215-1700

## SCREENING REQUIREMENTS

Does the jurisdiction require screening of pregnant women for hepatitis B infection or hepatitis B surface antigen (HBsAg)?

No

Does the jurisdiction specifically require reporting of positive HBsAg status in pregnant women?

No

## COMPLETION OF HEPATITIS B VACCINATION SERIES

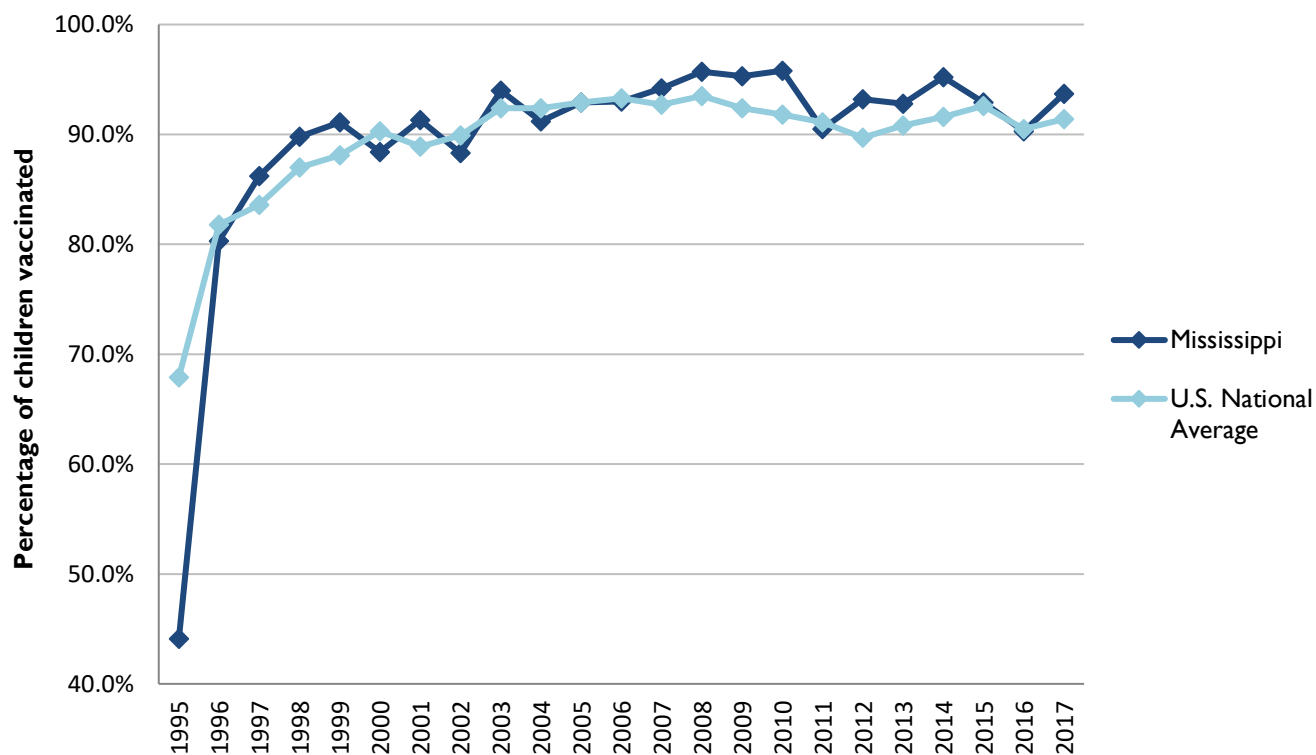
3 or more doses among children 19-35 months of age

	Percentage of children 19-35 months of age receiving 3 or more doses	Rank among other states	U.S. National Average	#1 ranked state and coverage
1995	44.1 ± 7.8%	48	67.9 ± 1.3%	88.5 ± 5.4% (South Carolina)
1996	80.3 ± 5.1%	28	81.8 ± 0.9%	95.8 ± 2.2% (South Carolina)
1997	86.2 ± 4.5%	18	83.6 ± 0.8%	91.6 ± 4.2% (New Jersey)
1998	89.8 ± 4.0%	10	87.0 ± 0.7%	94.1 ± 2.7% (South Carolina)
1999	91.1 ± 3.9%	13	88.1 ± 0.7%	94.0 ± 3.1% (Rhode Island)
2000	88.4 ± 4.3%	38	90.3 ± 0.6%	96.4 ± 1.9% (Rhode Island)
2001	91.3 ± 3.5%	10	88.9 ± 0.7%	95.8 ± 2.2% (Rhode Island)
2002	88.3 ± 5.0%	39	89.9 ± 0.7%	97.0 ± 2.0% (Rhode Island)
2003	94.0 ± 4.0%	14	92.4 ± 0.6%	98.2 ± 1.4% (Connecticut)
2004	91.2 ± 5.1%	38	92.4 ± 0.6%	96.8 ± 1.7% (Florida)
2005	92.9 ± 4.0%	24	92.9 ± 0.6%	97.9 ± 2.0% (Massachusetts)
2006	93.0 ± 4.2%	29	93.3 ± 0.6%	97.8 ± 1.6% (Rhode Island)
2007	94.2 ± 4.6%	19	92.7 ± 0.7%	98.6 ± 1.5% (New Hampshire)
2008	95.7 ± 2.4%	7	93.5 ± 0.7%	98.1 ± 1.6% (Connecticut)
2009	95.3 ± 2.8%	10	92.4 ± 0.7%	98.8 ± 1.5% (Rhode Island)
2010	95.8 ± 2.4%	8	91.8 ± 0.7%	98.3 ± 1.5% (North Dakota)
2011	90.5 ± 4.5%	32	91.1 ± 0.7%	96.2 ± 2.1% (Georgia)
2012	93.2 ± 4.5%	8	89.7 ± 0.9%	96.3 ± 3.0% (Georgia)
2013	92.8 ± 4.1%	15	90.8 ± 1.0%	96.7 ± 2.3% (Rhode Island)
2014	95.2 ± 4.1%	6	91.6 ± 0.9%	97.6 ± 1.8% (Louisiana)
2015	92.9 ± 4.7%	26	92.6 ± 0.7%	97.3 ± 2.3% (Connecticut)
2016	90.3 ± 4.6%	30	90.5 ± 1.1%	97.4 ± 1.9% (Iowa)
2017	93.7 ± 3.7%	10	91.4 ± 0.9%	97.7 ± 1.6% (North Dakota)

Data compiled by the ALC from National Immunization Surveys, 1995-2017<sup>1</sup>,  
<https://www.cdc.gov/vaccines/imz-managers/coverage/childvaxview/data-reports/hepb/index.html>

## GRAPH:

### Percentage of Children 19-35 Months of Age Receiving 3 or More Doses of Hepatitis B Vaccine



Data compiled by the ALC from National Immunization Surveys, 1995-2017<sup>1</sup>, <https://www.cdc.gov/vaccines/imz-managers/coverage/childvaxview/data-reports/hepb/index.html>

## HEPATITIS B BIRTH DOSE VACCINATION COVERAGE

1 or more dose among infants within 3 days of birth

	Percentage of infants receiving			Rank among other states according to		
	1 dose within 1 day of birth*	1 dose within 2 days of birth	1 dose within 3 days of birth*	1 dose within 1 day of birth	1 dose within 2 days of birth	1 dose within 3 days of birth
2003		27.7 ± 6.9%		N/A	41	N/A
2004		44.1 ± 7.5%		N/A	32	N/A
2005		54.6 ± 7.3%		N/A	26	N/A
2006	48.5 ± 7.4%	51.6 ± 7.4%	52.9 ± 7.5%	23	28	30
2007	59.5 ± 7.8%	62.6 ± 7.7%	62.8 ± 7.7%	15	19	22
2008	63.0 ± 6.1%	66.8 ± 5.9%	67.3 ± 5.9%	10	10	14
2009	65.5 ± 6.2%	67.5 ± 6.2%	68.0 ± 6.2%	11	15	19
2010	63.3 ± 6.2%	66.6 ± 6.1%	69.1 ± 6.0%	15	22	21
2011	70.1 ± 7.2%	74.6 ± 7.0%	76.1 ± 6.8%	13	13	13
2012	77.5 ± 6.8%	80.4 ± 6.7%	81.6 ± 6.5%	3	7	8
2013	72.5 ± 8.0%	77.0 ± 7.4%	79.2 ± 7.1%	16	17	17
2014	80.1 ± 7.4%	81.8 ± 7.2%	82.9 ± 7.1%	2	6	8
2015	72.4 ± 7.4%	76.4 ± 7.3%	77.0 ± 7.3%	9	15	19
2016	71.9 ± 6.8%	76.8 ± 6.4%	77.8 ± 6.4%	7	8	8
2017	66.9 ± 7.6%	70.0 ± 7.5%	71.0 ± 7.4%	29	38	40

\*No data available 2003-2005

### 2017 U.S. NATIONAL AVERAGE

Day 1: 65.7 ± 1.6%  
Day 2: 72.0 ± 1.6%  
Day 3: 73.6 ± 1.6%

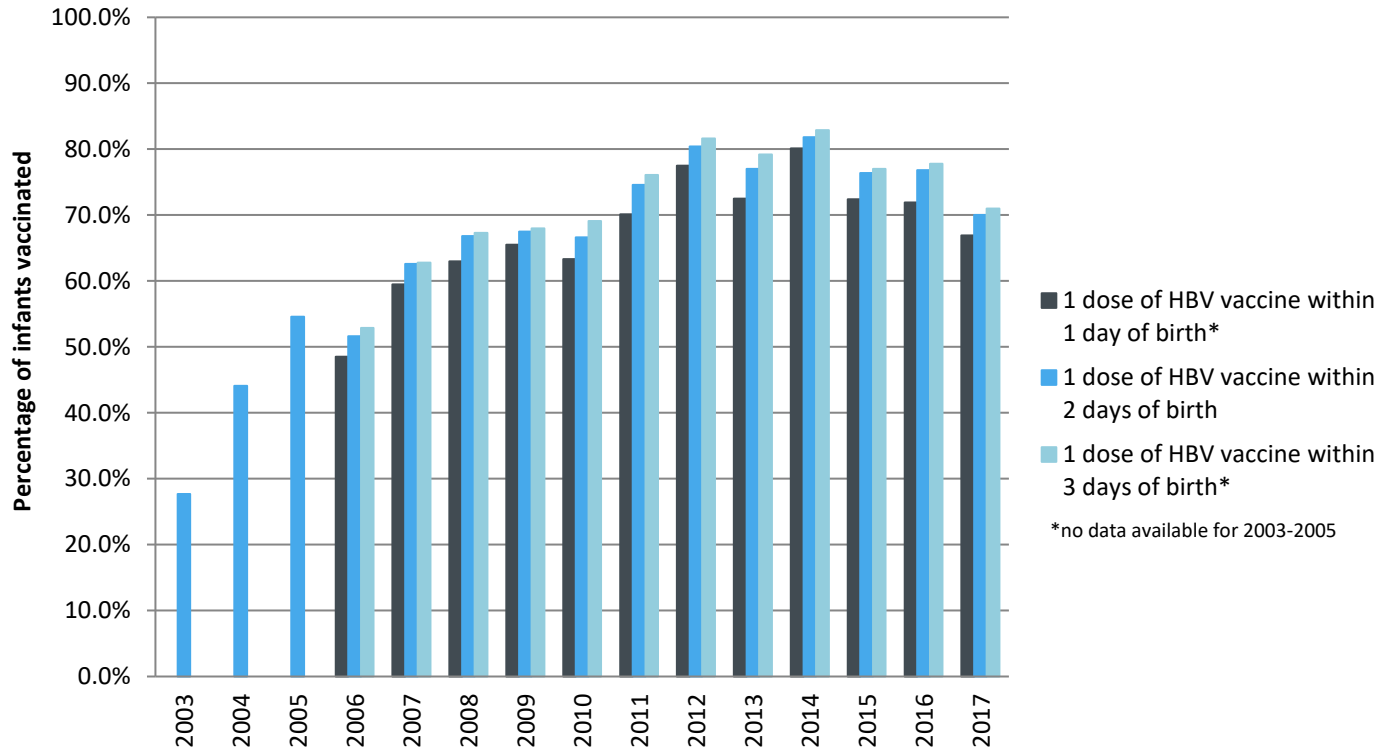
### 2017 HIGHEST BIRTH DOSE COVERAGE

Day 1: 82.0 ± 5.7% (Kentucky)  
Day 2: 84.1 ± 5.6% (Kentucky)  
Day 3: 84.1 ± 5.6% (Kentucky)

Data compiled by the ALC from National Immunization Surveys, 1995-2017<sup>1</sup>,  
<https://www.cdc.gov/vaccines/imz-managers/coverage/childvaxview/data-reports/hepb/index.html>

## GRAPH:

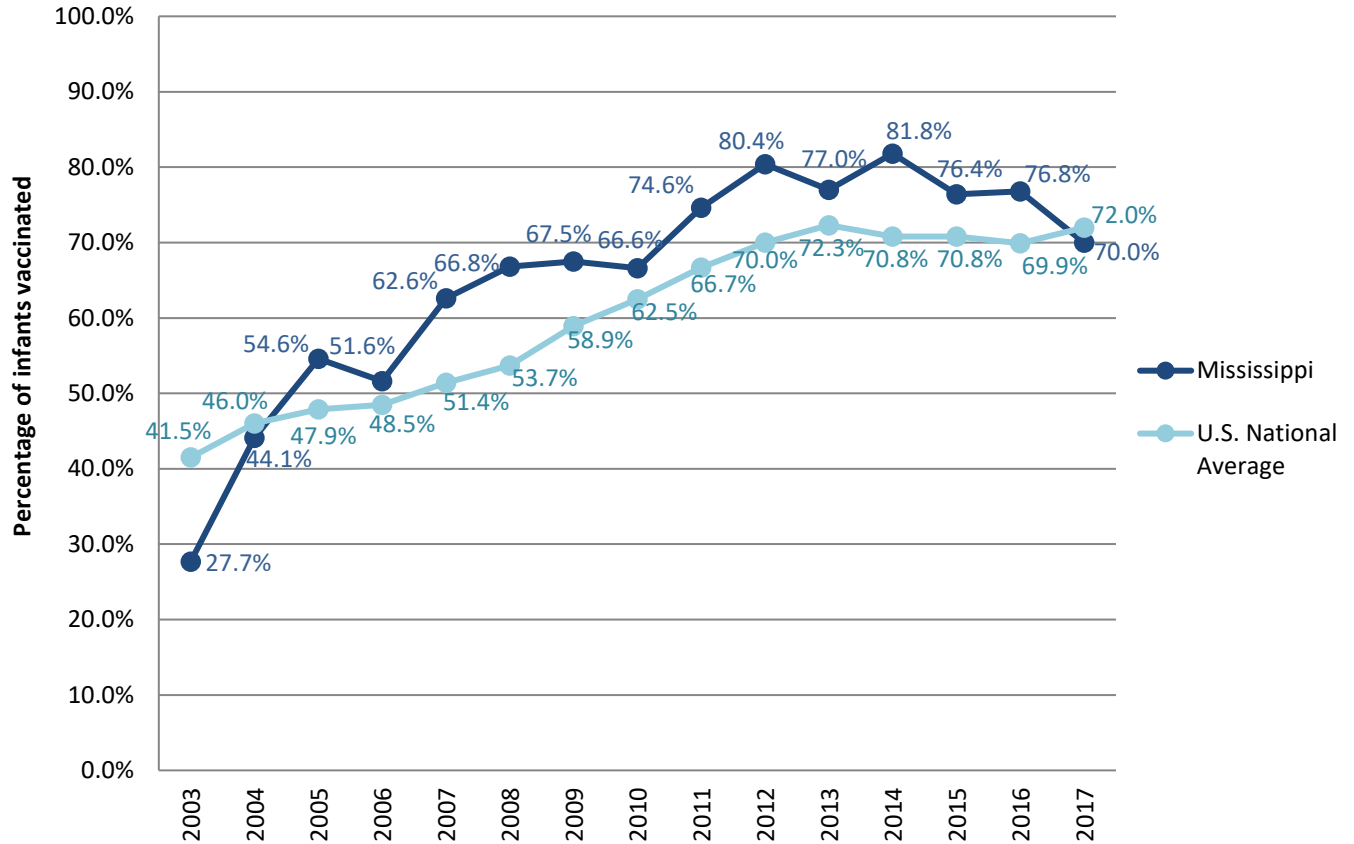
Estimated Vaccination Coverage for Hepatitis B Vaccine among Children from Birth to 3 Days of Age in Mississippi



Data compiled by the ALC from National Immunization Surveys, 1995-2017<sup>1</sup>,  
<https://www.cdc.gov/vaccines/imz-managers/coverage/childvaxview/data-reports/hepb/index.html>

## GRAPH:

### Percentage of Infants Receiving 1 Dose of Hepatitis B Vaccine within 2 Days of Birth



Data compiled by the ALC from National Immunization Surveys, 1995-2017<sup>1</sup>,  
<https://www.cdc.gov/vaccines/imz-managers/coverage/childvaxview/data-reports/hepb/index.html>

<sup>1</sup> The data from the National Immunization Surveys constitute a composite of data from children who were 19-35 months of age at the time of the survey. Therefore, the data might reflect a different estimate from the states' own birth cohort data.