

MINNESOTA

CONTACT THE STAFF

COORDINATOR:

Genny Grilli, MPH
Email: Genny.Grilli@state.mn.us
Phone: 651-201-5557
Fax: 651-201-5502

Sam Burt
Phone: 651-201-5511
Fax: 651-201-5502
Sam.Burt@state.mn.us

ADDRESS:

Minnesota Department of Health
625 Robert St N
P.O. Box 64975
St. Paul, MN 55164-0975

SCREENING REQUIREMENTS

Does the jurisdiction require screening of pregnant women for hepatitis B infection or hepatitis B surface antigen (HBsAg)?

No

Does the jurisdiction specifically require reporting of positive HBsAg status in pregnant women?

Yes - Minn. R. 4605.7044 (2007)

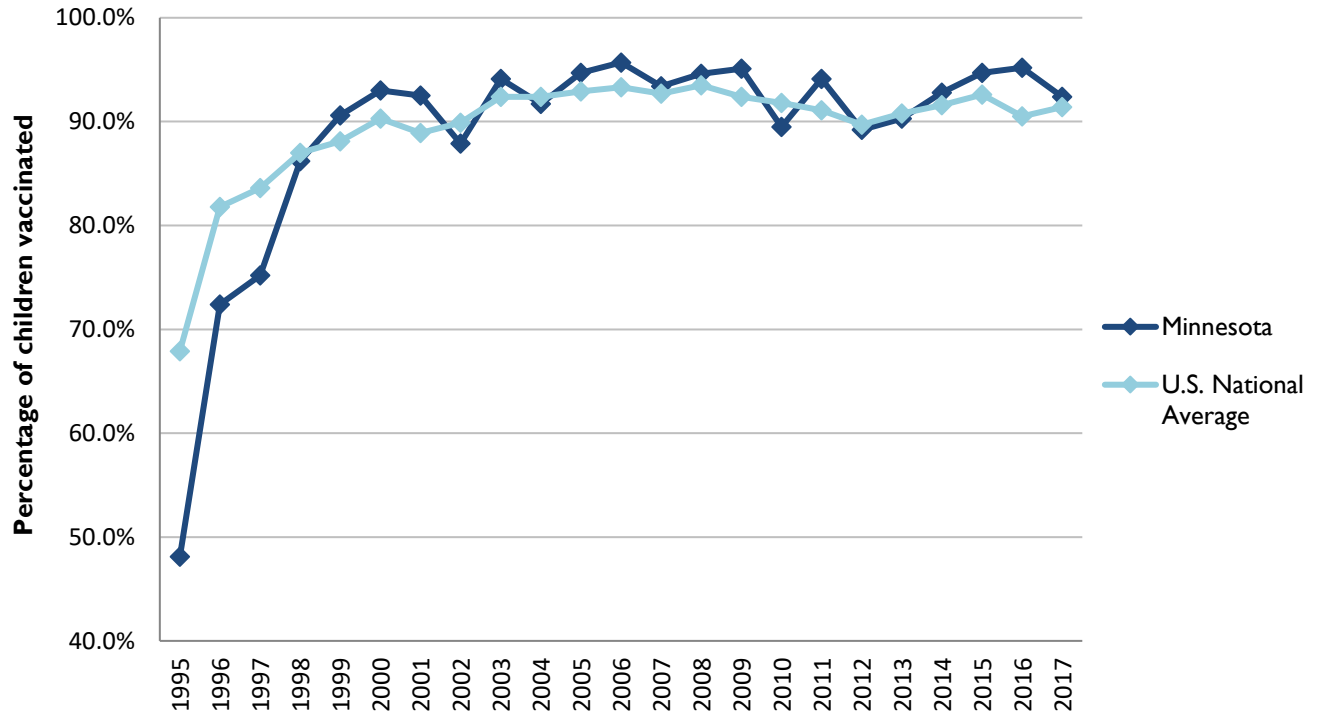
COMPLETION OF HEPATITIS B VACCINATION SERIES

3 or more doses among children 19-35 months of age

	Percentage of children 19-35 months of age receiving 3 or more doses	Rank among other states	U.S. National Average	#1 ranked state and coverage
1995	48.1 ± 7.1%	46	67.9 ± 1.3%	88.5 ± 5.4% (South Carolina)
1996	72.4 ± 5.5%	45	81.8 ± 0.9%	95.8 ± 2.2% (South Carolina)
1997	75.2 ± 5.6%	50	83.6 ± 0.8%	91.6 ± 4.2% (New Jersey)
1998	86.2 ± 4.1%	32	87.0 ± 0.7%	94.1 ± 2.7% (South Carolina)
1999	90.6 ± 3.8%	18	88.1 ± 0.7%	94.0 ± 3.1% (Rhode Island)
2000	93.0 ± 3.3%	11	90.3 ± 0.6%	96.4 ± 1.9% (Rhode Island)
2001	92.5 ± 3.4%	2	88.9 ± 0.7%	95.8 ± 2.2% (Rhode Island)
2002	87.9 ± 4.6%	42	89.9 ± 0.7%	97.0 ± 2.0% (Rhode Island)
2003	94.1 ± 3.3%	13	92.4 ± 0.6%	98.2 ± 1.4% (Connecticut)
2004	91.7 ± 5.6%	35	92.4 ± 0.6%	96.8 ± 1.7% (Florida)
2005	94.7 ± 3.6%	12	92.9 ± 0.6%	97.9 ± 2.0% (Massachusetts)
2006	95.7 ± 2.9%	8	93.3 ± 0.6%	97.8 ± 1.6% (Rhode Island)
2007	93.4 ± 3.4%	28	92.7 ± 0.7%	98.6 ± 1.5% (New Hampshire)
2008	94.6 ± 2.9%	18	93.5 ± 0.7%	98.1 ± 1.6% (Connecticut)
2009	95.1 ± 2.5%	13	92.4 ± 0.7%	98.8 ± 1.5% (Rhode Island)
2010	89.5 ± 4.3%	41	91.8 ± 0.7%	98.3 ± 1.5% (North Dakota)
2011	94.1 ± 3.6%	8	91.1 ± 0.7%	97.1 ± 1.7% (Louisiana)
2012	89.2 ± 4.4%	32	89.7 ± 0.9%	96.3 ± 3.0% (Georgia)
2013	90.3 ± 5.2%	31	90.8 ± 1.0%	96.7 ± 2.3% (Rhode Island)
2014	92.8 ± 4.7%	18	91.6 ± 0.9%	97.6 ± 1.8% (Louisiana)
2015	94.7 ± 2.9%	11	92.6 ± 0.7%	97.3 ± 2.3% (Connecticut)
2016	95.2 ± 3.0%	6	90.5 ± 1.1%	97.4 ± 1.9% (Iowa)
2017	92.4 ± 4.9%	19	91.4 ± 0.9%	97.7 ± 1.6% (North Dakota)

GRAPH:

Percentage of Children 19-35 Months of Age Receiving 3 or More Doses of Hepatitis B Vaccine



HEPATITIS B BIRTH DOSE VACCINATION COVERAGE

1 or more dose among infants within 3 days of birth

	Percentage of infants receiving			Rank among other states according to		
	1 dose within 1 day of birth*	1 dose within 2 days of birth	1 dose within 3 days of birth*	1 dose within 1 day of birth	1 dose within 2 days of birth	1 dose within 3 days of birth
2003		No data		N/A	N/A	N/A
2004		No data		N/A	N/A	N/A
2005		11.9 ± 5.5%		N/A	51	N/A
2006	12.8 ± 4.9%	14.9 ± 5.1%	15.2 ± 5.1%	51	50	50
2007	16.0 ± 6.3%	21.1 ± 6.7%	21.8 ± 6.8%	50	50	50
2008	18.1 ± 5.4%	21.2 ± 5.5%	21.7 ± 5.5%	50	50	50
2009	27.7 ± 5.8%	33.2 ± 6.1%	34.1 ± 6.2%	50	50	49
2010	42.6 ± 7.4%	46.1 ± 7.4%	46.8 ± 7.4%	46	49	49
2011	47.5 ± 7.7%	54.9 ± 8.1%	56.8 ± 8.0%	46	47	47
2012	55.0 ± 7.7%	60.9 ± 7.5%	62.8 ± 7.4%	43	45	45
2013	58.2 ± 8.9%	63.8 ± 8.6%	63.8 ± 8.6%	38	44	44
2014	58.1 ± 9.6%	67.8 ± 8.9%	70.2 ± 8.5%	39	39	40
2015	62.9 ± 6.7%	67.3 ± 6.5%	67.8 ± 6.5%	32	37	41
2016	61.0 ± 7.5%	67.2 ± 7.4%	71.8 ± 7.1%	37	37	33
2017	73.5 ± 6.5%	79.5 ± 6.0%	81.2 ± 5.7%	25	31	36

*No data available 2003-2005

2017 U.S. NATIONAL AVERAGE

Day 1: 65.7 ± 1.6%
Day 2: 72.0 ± 1.6%
Day 3: 73.6 ± 1.6%

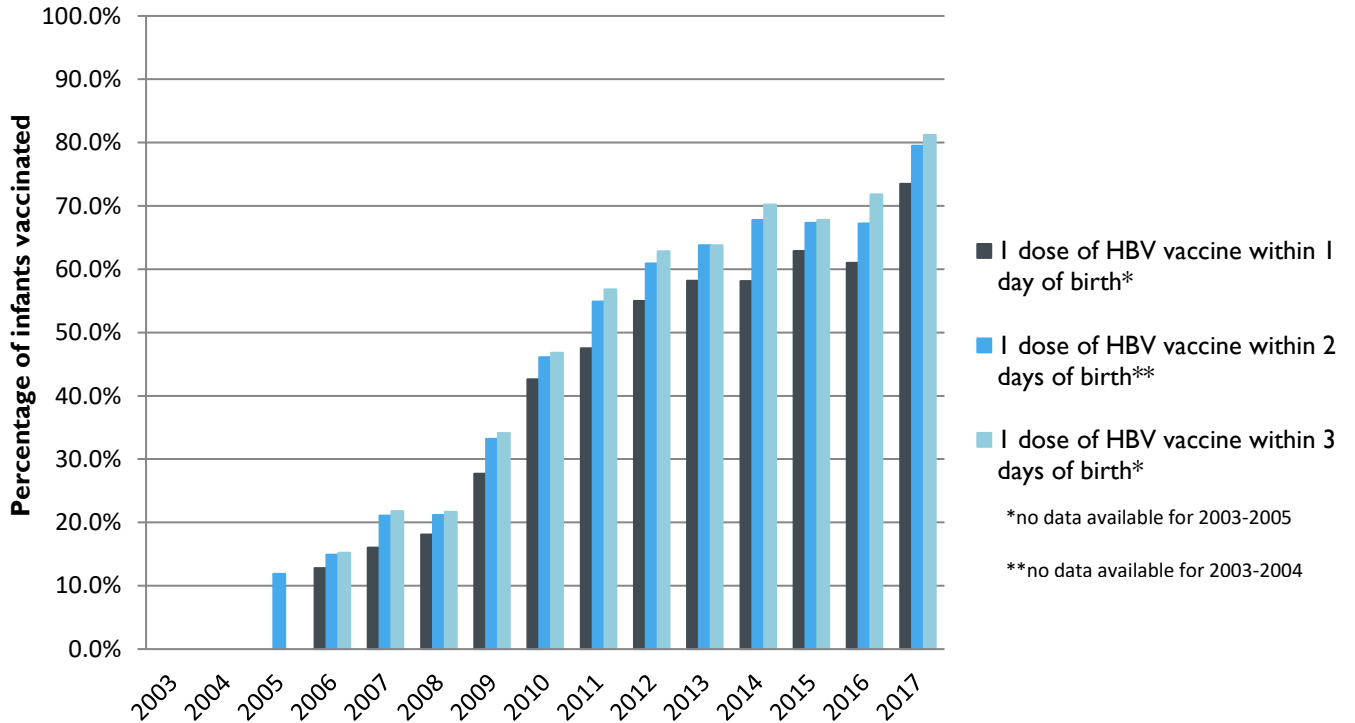
2017 HIGHEST BIRTH DOSE COVERAGE

Day 1: 82.0 ± 5.7% (Kentucky)
Day 2: 84.1 ± 5.6% (Kentucky)
Day 3: 84.1 ± 5.6% (Kentucky)

Data compiled by the ALC from National Immunization Surveys, 1995-2017¹,
<https://www.cdc.gov/vaccines/imz-managers/coverage/childvaxview/data-reports/hepb/index.html>

GRAPH:

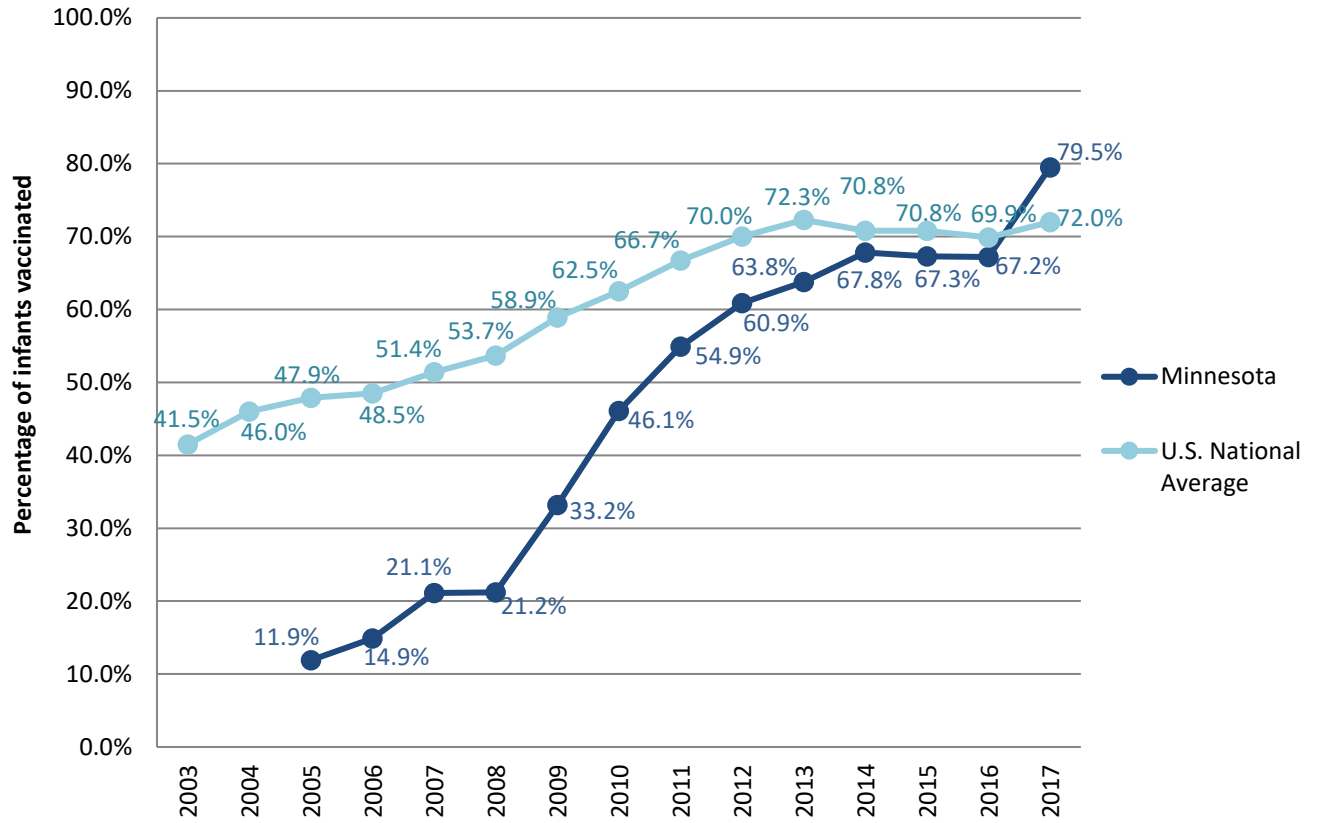
Estimated Vaccination Coverage for Hepatitis B Vaccine among Children from Birth to 3 Days of Age in Minnesota



Data compiled by the ALC from National Immunization Surveys, 1995-2017¹,
<https://www.cdc.gov/vaccines/imz-managers/coverage/childvaxview/data-reports/hepb/index.html>

GRAPH:

Percentage of Infants Receiving 1 Dose of Hepatitis B Vaccine within 2 Days of Birth



Data compiled by the ALC from National Immunization Surveys, 1995-2017¹,
<https://www.cdc.gov/vaccines/imz-managers/coverage/childvaxview/data-reports/hepb/index.html>

¹ The data from the National Immunization Surveys constitute a composite of data from children who were 19-35 months of age at the time of the survey. Therefore, the data might reflect a different estimate from the states' own birth cohort data.