

MASSACHUSETTS

CONTACT THE STAFF

COORDINATOR:

Katie Reilly, MPH, MSN, RN, APHN-BC
Email: catherine.reilly@state.ma.usg
Phone: 508-441-3982 (M/W/F)
Phone: 508-983-6833 (T/TH)
Fax: 617-983-6840

ADDRESS:

Massachusetts Department of Public Health
Immunization Program
305 South Street
Jamaica Plain, MA 02130

SCREENING REQUIREMENTS

Does the jurisdiction require screening of pregnant women for hepatitis B infection or hepatitis B surface antigen (HBsAg)?

Yes - Mass. Regs. Code tit. 105, § 130.627

Does the jurisdiction specifically require reporting of positive HBsAg status in pregnant women?

No

COMPLETION OF HEPATITIS B VACCINATION SERIES

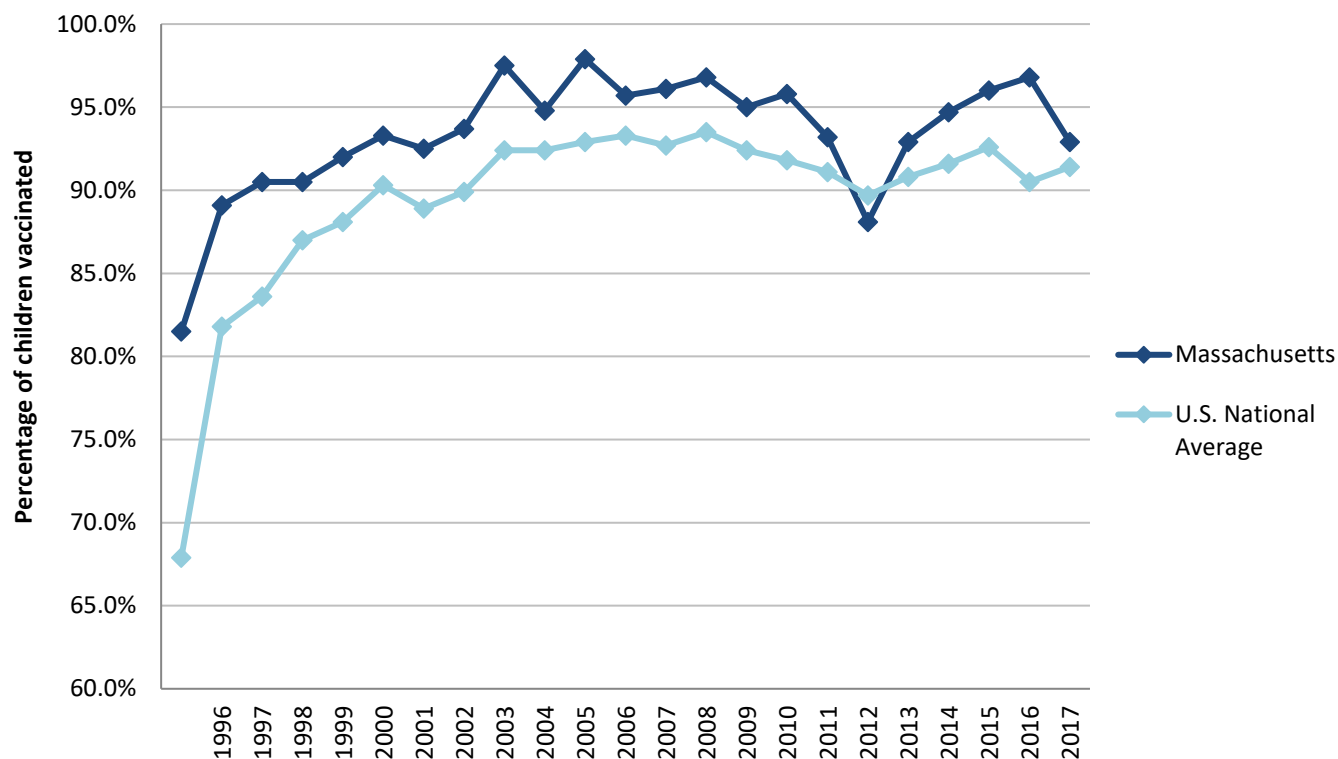
3 or more doses among children 19-35 months of age

	Percentage of children 19-35 months of age receiving 3 or more doses	Rank among other states	U.S. National Average	#1 ranked state and coverage
1995	81.5 ± 5.0%	3	67.9 ± 1.3%	88.5 ± 5.4% (South Carolina)
1996	89.1 ± 3.8%	4	81.8 ± 0.9%	95.8 ± 2.2% (South Carolina)
1997	90.5 ± 3.2%	3	83.6 ± 0.8%	91.6 ± 4.2% (New Jersey)
1998	90.5 ± 3.2%	4	87.0 ± 0.7%	94.1 ± 2.7% (South Carolina)
1999	92.0 ± 3.2%	10	88.1 ± 0.7%	94.0 ± 3.1% (Rhode Island)
2000	93.3 ± 2.7%	9	90.3 ± 0.6%	96.4 ± 1.9% (Rhode Island)
2001	92.5 ± 3.0%	3	88.9 ± 0.7%	95.8 ± 2.2% (Rhode Island)
2002	93.7 ± 3.0%	4	89.9 ± 0.7%	97.0 ± 2.0% (Rhode Island)
2003	97.5 ± 1.5%	2	92.4 ± 0.6%	98.2 ± 1.4% (Connecticut)
2004	94.8 ± 2.8%	11	92.4 ± 0.6%	96.8 ± 1.7% (Florida)
2005	97.9 ± 2.0%	1	92.9 ± 0.6%	97.9 ± 2.0% (Massachusetts)
2006	95.7 ± 2.2%	11	93.3 ± 0.6%	97.8 ± 1.6% (Rhode Island)
2007	96.1 ± 2.7%	8	92.7 ± 0.7%	98.6 ± 1.5% (New Hampshire)
2008	96.8 ± 2.4%	3	93.5 ± 0.7%	98.1 ± 1.6% (Connecticut)
2009	95.0 ± 2.7%	15	92.4 ± 0.7%	98.8 ± 1.5% (Rhode Island)
2010	95.8 ± 2.5%	7	91.8 ± 1.5%	98.3 ± 1.5% (North Dakota)
2011	93.2 ± 3.3%	12	91.1 ± 0.7%	97.1 ± 1.7% (Louisiana)
2012	88.1 ± 4.8%	40	89.7 ± 0.9%	96.3 ± 3.0% (Georgia)
2013	92.9 ± 3.7%	13	90.8 ± 1.0%	96.7 ± 2.3% (Rhode Island)
2014	94.7 ± 3.4%	12	91.6 ± 0.9%	97.6 ± 1.8% (Louisiana)
2015	96.0 ± 2.3%	5	92.6 ± 0.7%	97.3 ± 2.3% (Connecticut)
2016	96.8 ± 2.4%	2	90.5 ± 1.1%	97.4 ± 1.9% (Iowa)
2017	92.9 ± 4.6%	17	91.4 ± 0.9%	97.7 ± 1.6% (North Dakota)

Data compiled by the ALC from National Immunization Surveys, 1995-2017¹,
<https://www.cdc.gov/vaccines/imz-managers/coverage/childvaxview/data-reports/hepb/index.html>

GRAPH:

Percentage of Children 19-35 Months of Age Receiving 3 or More Doses of Hepatitis B Vaccine



Data compiled by the ALC from National Immunization Surveys, 1995-2017¹, <https://www.cdc.gov/vaccines/imz-managers/coverage/childvaxview/data-reports/hepb/index.html>

HEPATITIS B BIRTH DOSE VACCINATION COVERAGE

1 or more dose among infants within 3 days of birth

	Percentage of infants receiving			Rank among other states according to		
	1 dose within 1 day of birth*	1 dose within 2 days of birth	1 dose within 3 days of birth*	1 dose within 1 day of birth	1 dose within 2 days of birth	1 dose within 3 days of birth
2003		83.5 ± 4.4%		N/A	1	N/A
2004		76.8 ± 5.1%		N/A	4	N/A
2005		81.1 ± 5.8%		N/A	1	N/A
2006	61.9 ± 6.5%	82.7 ± 4.4%	85.6 ± 4.2%	8	1	1
2007	55.1 ± 9.0%	65.6 ± 8.8%	72.4 ± 8.3%	19	14	10
2008	49.7 ± 7.5%	64.4 ± 7.3%	66.8 ± 7.3%	27	19	16
2009	44.3 ± 7.3%	59.6 ± 6.9%	62.5 ± 6.8%	39	30	31
2010	45.4 ± 7.3%	62.4 ± 6.8%	67.3 ± 6.5%	42	32	25
2011	51.8 ± 7.8%	62.9 ± 7.6%	70.0 ± 7.3%	41	39	32
2012	52.5 ± 7.0%	67.8 ± 6.7%	74.0 ± 6.2%	46	34	26
2013	56.9 ± 8.0%	72.6 ± 6.9%	78.0 ± 6.4%	41	29	20
2014	60.3 ± 7.7%	71.1 ± 7.1%	74.8 ± 6.9%	37	34	29
2015	58.7 ± 6.9%	73.9 ± 6.1%	78.4 ± 5.8%	39	22	13
2016	57.0 ± 7.3%	72.7 ± 6.8%	76.7 ± 6.3%	42	20	11
2017	57.1 ± 8.5%	73.7 ± 7.6%	75.0 ± 7.5%	44	26	27

*No data available 2003-2005

2017 U.S. NATIONAL AVERAGE

Day 1: 65.7 ± 1.6%
Day 2: 72.0 ± 1.6%
Day 3: 73.6 ± 1.6%

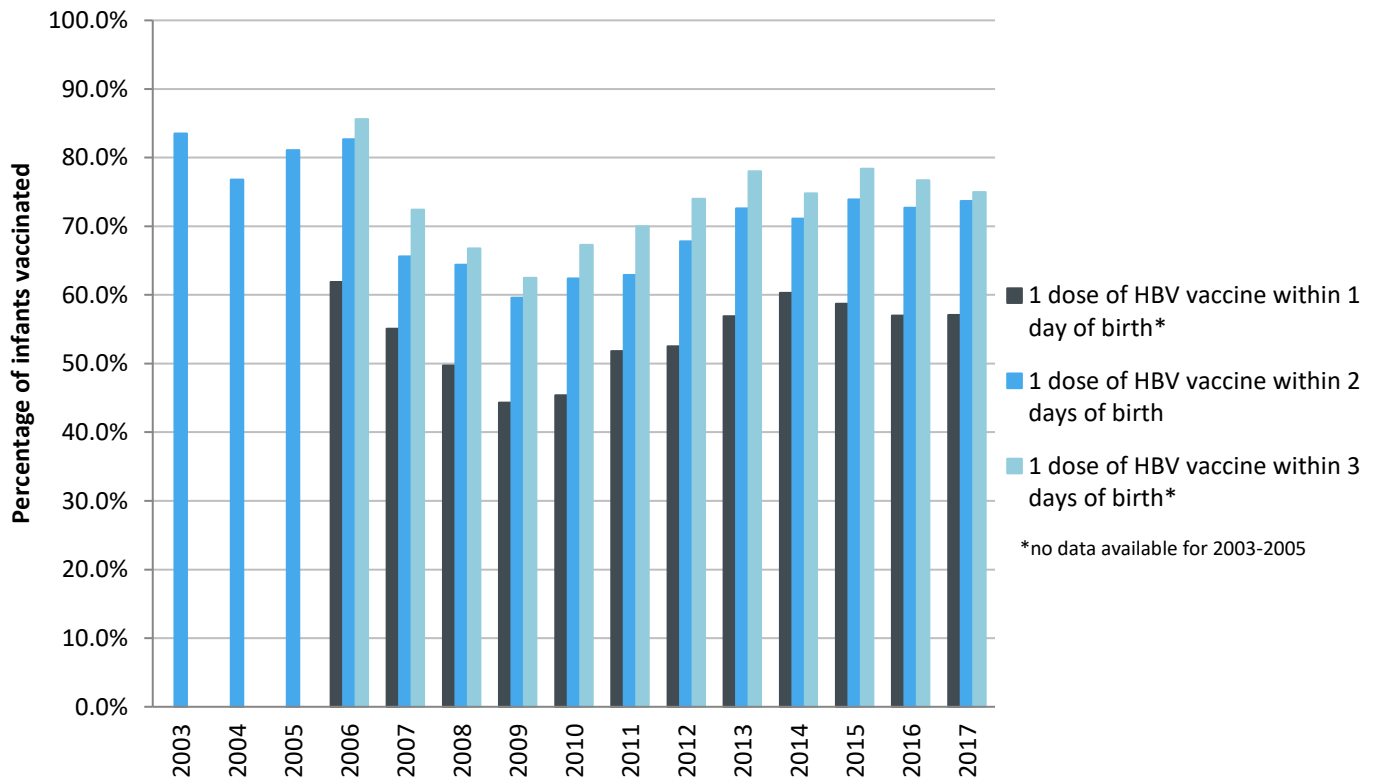
2017 HIGHEST BIRTH DOSE COVERAGE

Day 1: 82.0 ± 5.7% (Kentucky)
Day 2: 84.1 ± 5.6% (Kentucky)
Day 3: 84.1 ± 5.6% (Kentucky)

Data compiled by the ALC from National Immunization Surveys, 1995-2017¹,
<https://www.cdc.gov/vaccines/imz-managers/coverage/childvaxview/data-reports/hepb/index.html>

GRAPH:

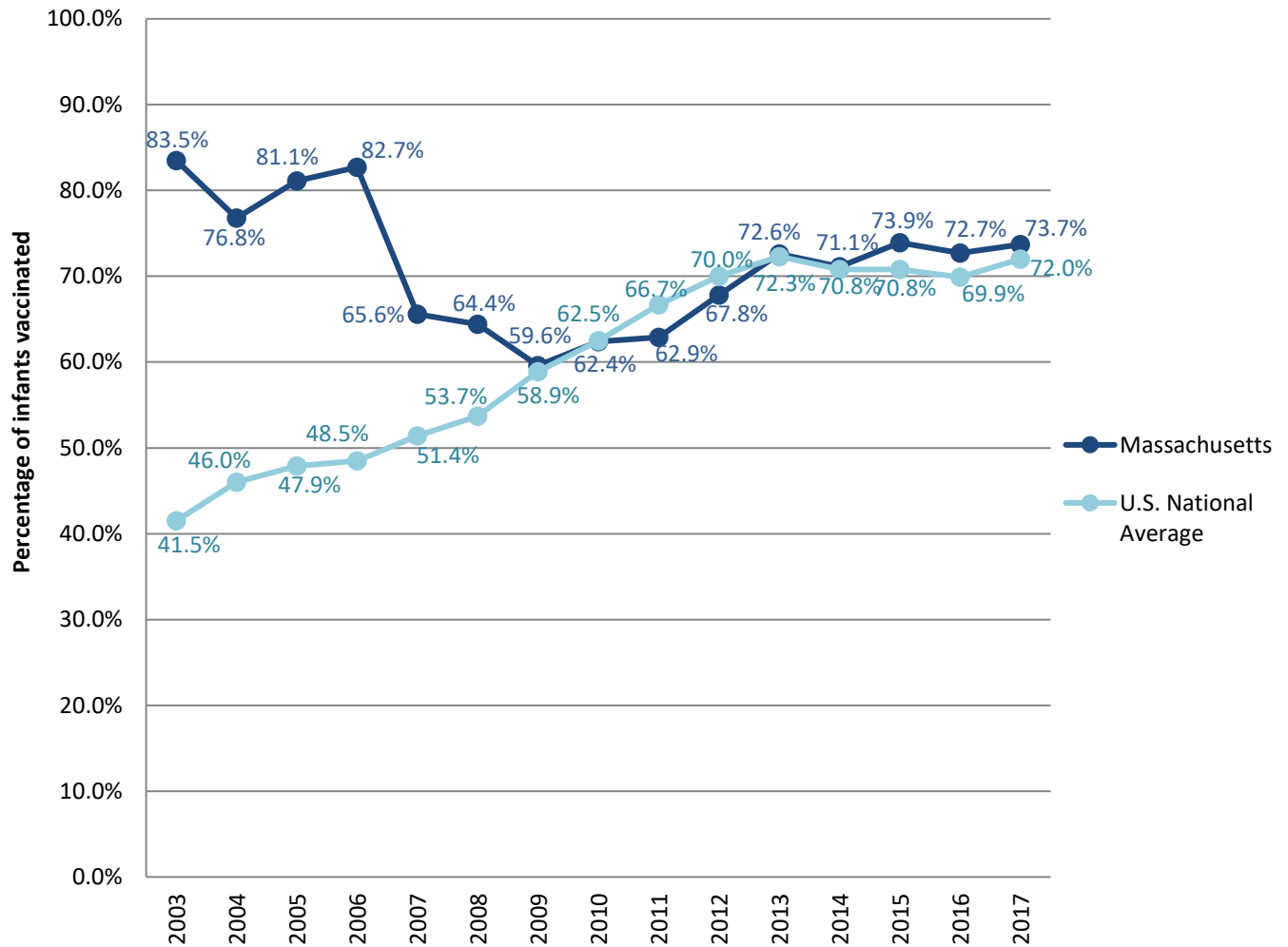
Estimated Vaccination Coverage for Hepatitis B Vaccine among Children from Birth to 3 Days of Age in Massachusetts



Data compiled by the ALC from National Immunization Surveys, 1995-2017¹,
<https://www.cdc.gov/vaccines/imz-managers/coverage/childvaxview/data-reports/hepb/index.html>

GRAPH:

Percentage of Infants Receiving 1 Dose of Hepatitis B Vaccine within 2 Days of Birth



Data compiled by the ALC from National Immunization Surveys, 1995-2017¹, <https://www.cdc.gov/vaccines/imz-managers/coverage/childvaxview/data-reports/hepb/index.html>

¹ The data from the National Immunization Surveys constitute a composite of data from children who were 19-35 months of age at the time of the survey. Therefore, the data might reflect a different estimate from the states' own birth cohort data.