

LOUISIANA

CONTACT THE STAFF

COORDINATOR:

Lyndsey Kirchner, MPH
Email: Lyndsey.Kirchner@la.gov
Phone: 504-568-2600
Fax: 504-568-2659

ADDRESS:

Louisiana Office of Public Health
Immunization Program
1450 Poydras Street, Suite 1938
New Orleans, LA 70112

HEPATITIS PROGRAM CONSULTANT:

Jennifer Ledet, MBA
Email: Jennifer.Ledet@la.gov

SCREENING REQUIREMENTS

Does the jurisdiction require screening of pregnant women for hepatitis B infection or hepatitis B surface antigen (HBsAg)?

No

Does the jurisdiction specifically require reporting of positive HBsAg status in pregnant women?

Yes - La. Admin. Code tit. 51, § 105

COMPLETION OF HEPATITIS B VACCINATION SERIES

3 or more doses among children 19-35 months of age

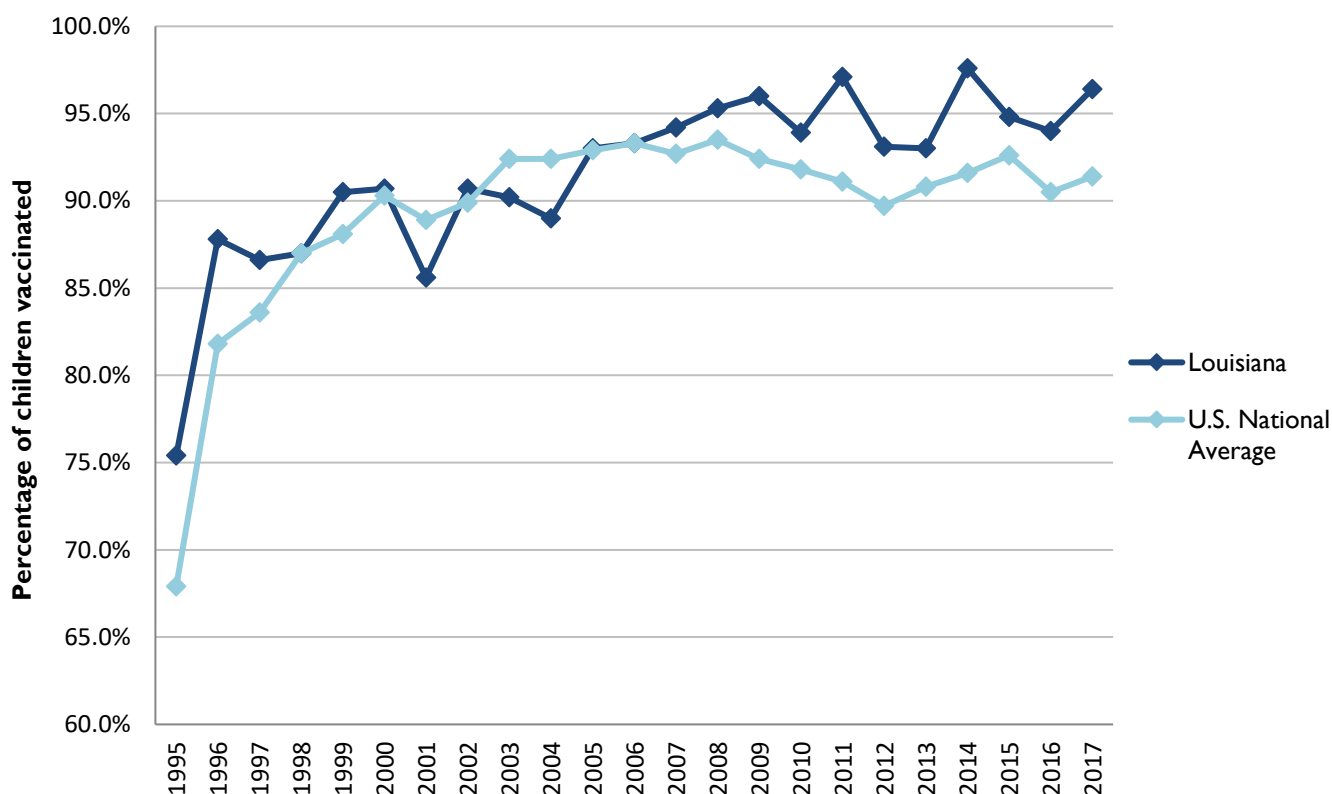
	Percentage of children 19-35 months of age receiving 3 or more doses	Rank among other states	U.S. National Average	#1 ranked state and coverage
1995	75.4 ± 6.2%	9	67.9 ± 1.3%	88.5 ± 5.4% (South Carolina)
1996	87.8 ± 4.3%	6	81.8 ± 0.9%	95.8 ± 2.2% (South Carolina)
1997	86.6 ± 3.8%	16	83.6 ± 0.8%	91.6 ± 4.2% (New Jersey)
1998	87.0 ± 3.8%	27	87.0 ± 0.7%	94.1 ± 2.7% (South Carolina)
1999	90.5 ± 2.9%	21	88.1 ± 0.7%	94.0 ± 3.1% (Rhode Island)
2000	90.7 ± 3.2%	24	90.3 ± 0.6%	96.4 ± 1.9% (Rhode Island)
2001	85.6 ± 4.4%	42	88.9 ± 0.7%	95.8 ± 2.2% (Rhode Island)
2002	90.7 ± 3.4%	26	89.9 ± 0.7%	97.0 ± 2.0% (Rhode Island)
2003	90.2 ± 3.8%	41	92.4 ± 0.6%	98.2 ± 1.4% (Connecticut)
2004	89.0 ± 3.7%	46	92.4 ± 0.6%	96.8 ± 1.7% (Florida)
2005	93.0 ± 2.5%	23	92.9 ± 0.6%	97.9 ± 2.0% (Massachusetts)
2006	93.3 ± 3.9%	26	93.3 ± 0.6%	97.8 ± 1.6% (Rhode Island)
2007	94.2 ± 2.9%	20	92.7 ± 0.7%	98.6 ± 1.5% (New Hampshire)
2008	95.3 ± 2.6%	10	93.5 ± 0.7%	98.1 ± 1.6% (Connecticut)
2009	96.0 ± 2.4%	7	92.4 ± 0.7%	98.8 ± 1.5% (Rhode Island)
2010	93.9 ± 3.6%	15	91.8 ± 0.7%	98.3 ± 1.5% (North Dakota)
2011	97.1 ± 1.7%	1	91.1 ± 0.7%	97.1 ± 1.7% (Louisiana)
2012	93.1 ± 4.4%	9	89.7 ± 0.9%	96.3 ± 3.0% (Georgia)
2013	93.0 ± 3.9%	12	90.8 ± 1.0%	96.7 ± 2.3% (Rhode Island)
2014	97.6 ± 1.8%	1	91.6 ± 0.9%	97.6 ± 1.8% (Louisiana)
2015	94.8 ± 2.9%	10	92.6 ± 0.7%	97.3 ± 2.3% (Connecticut)
2016	94.0 ± 3.0%	15	90.5 ± 1.1%	97.4 ± 1.9% (Iowa)
2017	96.4 ± 2.0%	3	91.4 ± 0.9%	97.7 ± 1.6% (North Dakota)

Data compiled by the ALC from National Immunization Surveys, 1995-2017¹,

<https://www.cdc.gov/vaccines/imz-managers/coverage/childvaxview/data-reports/hepb/index.html>

GRAPH:

Percentage of Children 19-35 Months of Age Receiving 3 or More Doses of Hepatitis B Vaccine



Data compiled by the ALC from National Immunization Surveys, 1995-2017¹,
<https://www.cdc.gov/vaccines/imz-managers/coverage/childvaxview/data-reports/hepb/index.html>

HEPATITIS B BIRTH DOSE VACCINATION COVERAGE

1 or more dose among infants within 3 days of birth

	Percentage of infants receiving			Rank among other states according to		
	1 dose within 1 day of birth*	1 dose within 2 days of birth	1 dose within 3 days of birth*	1 dose within 1 day of birth	1 dose within 2 days of birth	1 dose within 3 days of birth
2003		52.7 ± 6.0%		N/A	23	N/A
2004		52.2 ± 6.6%		N/A	26	N/A
2005		56.0 ± 4.9%		N/A	22	N/A
2006	54.3 ± 7.2%	57.9 ± 7.2%	61.0 ± 7.1%	19	23	23
2007	49.4 ± 7.4%	57.9 ± 7.5%	60.4 ± 7.4%	28	28	28
2008	52.2 ± 6.5%	59.5 ± 6.3%	62.3 ± 6.2%	24	31	30
2009	51.9 ± 7.4%	61.5 ± 7.0%	63.0 ± 6.9%	29	27	29
2010	52.7 ± 7.9%	57.6 ± 7.8%	61.6 ± 7.8%	33	39	37
2011	61.5 ± 7.3%	67.4 ± 7.3%	76.7 ± 6.0%	30	32	12
2012	64.9 ± 7.6%	72.6 ± 7.1%	76.6 ± 6.8%	24	24	20
2013	69.8 ± 7.0%	80.1 ± 5.8%	81.6 ± 5.7%	20	8	10
2014	71.4 ± 7.0%	80.3 ± 5.7%	83.2 ± 5.1%	20	9	5
2015	70.3 ± 7.4%	74.6 ± 7.2%	75.3 ± 7.1%	16	21	23
2016	63.7 ± 7.3%	71.5 ± 6.8%	72.7 ± 6.8%	29	23	29
2017	68.7 ± 7.0%	75.8 ± 6.6%	78.6 ± 6.4%	26	19	14

*No data available 2003-2005

2017 U.S. NATIONAL AVERAGE

Day 1: 65.7 ± 1.6%
Day 2: 72.0 ± 1.6%
Day 3: 73.6 ± 1.6%

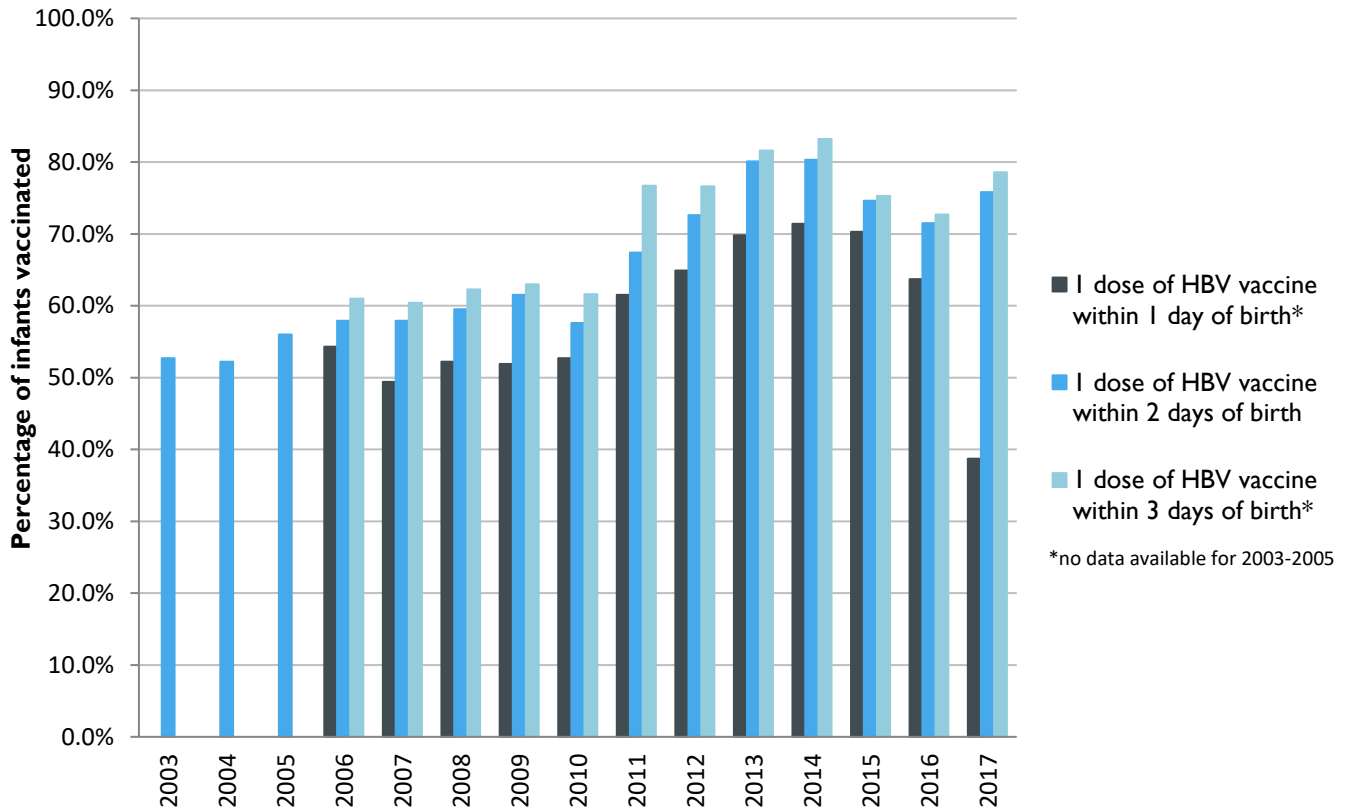
2017 HIGHEST BIRTH DOSE COVERAGE

Day 1: 82.0 ± 5.7% (Kentucky)
Day 2: 84.1 ± 5.6% (Kentucky)
Day 3: 84.1 ± 5.6% (Kentucky)

Data compiled by the ALC from National Immunization Surveys, 1995-2017¹,
<https://www.cdc.gov/vaccines/imz-managers/coverage/childvaxview/data-reports/hepb/index.html>

GRAPH:

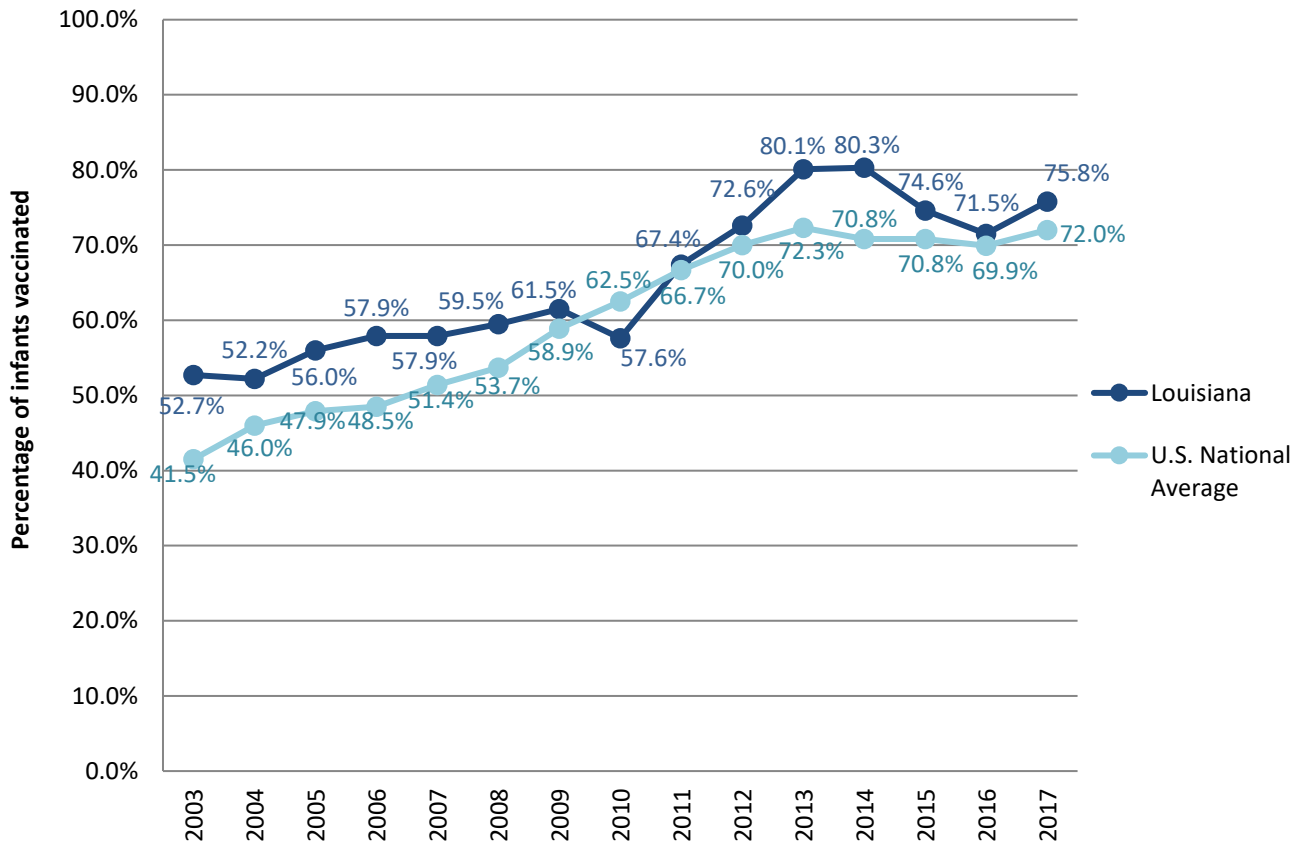
Estimated Vaccination Coverage for Hepatitis B Vaccine among Children from Birth to 3 Days of Age in Louisiana



Data compiled by the ALC from National Immunization Surveys, 1995-2017¹,
<https://www.cdc.gov/vaccines/imz-managers/coverage/childvaxview/data-reports/hepb/index.html>

GRAPH:

Percentage of Infants Receiving 1 Dose of Hepatitis B Vaccine within 2 Days of Birth



Data compiled by the ALC from National Immunization Surveys, 1995-2017¹,
<https://www.cdc.gov/vaccines/imz-managers/coverage/childvaxview/data-reports/hepb/index.html>

¹ The data from the National Immunization Surveys constitute a composite of data from children who were 19-35 months of age at the time of the survey. Therefore, the data might reflect a different estimate from the states' own birth cohort data.