

KANSAS

CONTACT THE STAFF

COORDINATOR:

Kelly Gillespie, MPH
Email: Kelly.Gillespie@ks.gov
Phone: 785-296-5588
Cell: 785-291-3775
Epidemiology Hotline: 877-427-7317

ADDRESS:

Bureau of Epidemiology and Public Health
Informatics
Kansas Department of Health and Environment
1000 SW Jackson St, Suite 075
Topeka, KS 66612

SCREENING REQUIREMENTS

Does the jurisdiction require screening of pregnant women for hepatitis B infection or hepatitis B surface antigen (HBsAg)?

Yes - Kan. Stat. Ann. § 65-153f

Does the jurisdiction specifically require reporting of positive HBsAg status in pregnant women?

Yes - Kan. Admin. Regs. 28-1-2

COMPLETION OF HEPATITIS B VACCINATION SERIES

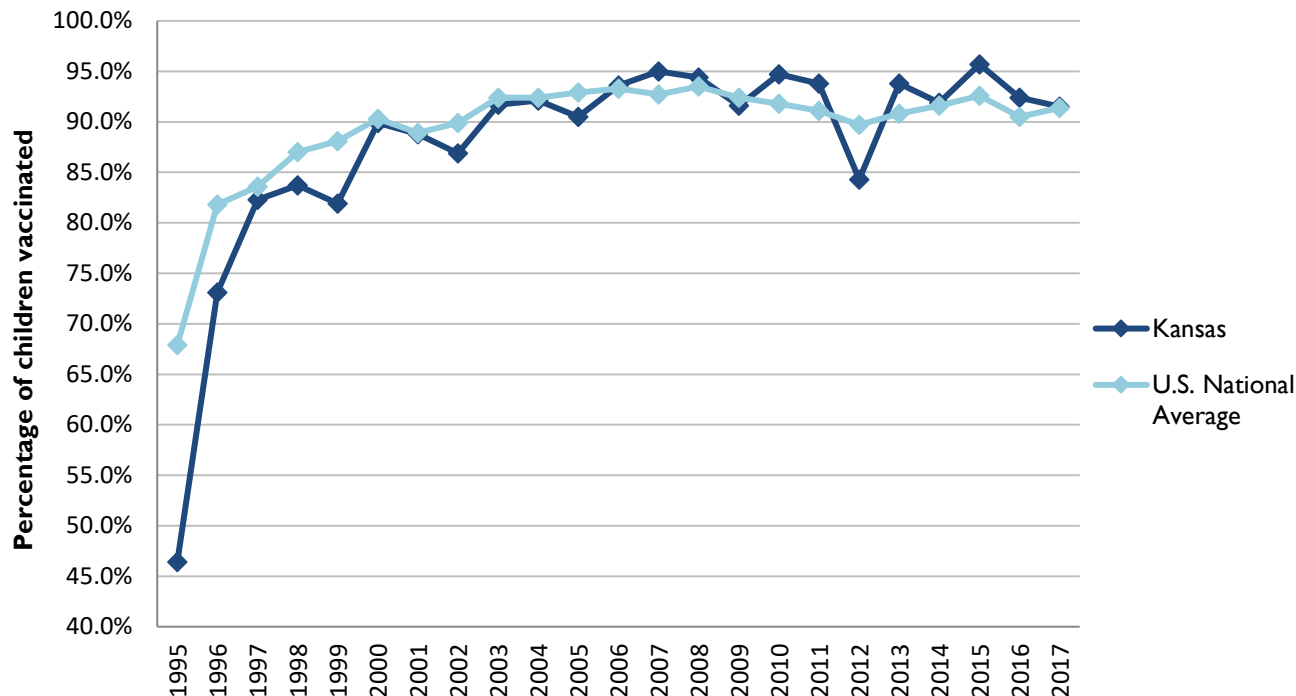
3 or more doses among children 19-35 months of age

	Percentage of children 19-35 months of age receiving 3 or more doses	Rank among other states	U.S. National Average	#1 ranked state and coverage
1995	46.4 ± 7.2%	47	67.9 ± 1.3%	88.5 ± 5.4% (South Carolina)
1996	73.1 ± 5.8%	44	81.8 ± 0.9%	95.8 ± 2.2% (South Carolina)
1997	82.3 ± 4.8%	35	83.6 ± 0.8%	91.6 ± 4.2% (New Jersey)
1998	83.7 ± 4.9%	40	87.0 ± 0.7%	94.1 ± 2.7% (South Carolina)
1999	81.9 ± 4.5%	47	88.1 ± 0.7%	94.0 ± 3.1% (Rhode Island)
2000	89.9 ± 3.8%	30	90.3 ± 0.6%	96.4 ± 1.9% (Rhode Island)
2001	88.8 ± 4.9%	26	88.9 ± 0.7%	95.8 ± 2.2% (Rhode Island)
2002	86.9 ± 5.5%	44	89.9 ± 0.7%	97.0 ± 2.0% (Rhode Island)
2003	91.7 ± 3.7%	32	92.4 ± 0.6%	98.2 ± 1.4% (Connecticut)
2004	92.1 ± 4.9%	31	92.4 ± 0.6%	96.8 ± 1.7% (Florida)
2005	90.5 ± 3.9%	39	92.9 ± 0.6%	97.9 ± 2.0% (Massachusetts)
2006	93.6 ± 2.5%	23	93.3 ± 0.6%	97.8 ± 1.6% (Rhode Island)
2007	95.0 ± 2.9%	14	92.7 ± 0.7%	98.6 ± 1.5% (New Hampshire)
2008	94.4 ± 3.1%	19	93.5 ± 0.7%	98.1 ± 1.6% (Connecticut)
2009	91.6 ± 4.6%	30	92.4 ± 0.7%	98.8 ± 1.5% (Rhode Island)
2010	94.7 ± 2.6%	12	91.8 ± 0.7%	98.3 ± 1.5% (North Dakota)
2011	93.8 ± 3.4%	10	91.1 ± 0.7%	97.1 ± 1.7 (Louisiana)
2012	84.3 ± 5.5%	49	89.7 ± 0.9%	96.3 ± 3.0% (Georgia)
2013	93.8 ± 3.6%	9	90.8 ± 1.0%	96.7 ± 2.3% (Rhode Island)
2014	91.9 ± 4.3%	29	91.6 ± 0.9%	97.6 ± 1.8% (Louisiana)
2015	95.7 ± 2.8%	8	92.6 ± 0.7%	97.3 ± 2.3% (Connecticut)
2016	92.4 ± 4.2%	24	90.5 ± 1.1%	97.4 ± 1.9% (Iowa)
2017	91.5 ± 4.5%	29	91.4 ± 0.9%	97.7 ± 1.6% (North Dakota)

Data compiled by the ALC from National Immunization Surveys, 1995-2017¹,
<https://www.cdc.gov/vaccines/imz-managers/coverage/childvaxview/data-reports/hepb/index.html>

GRAPH:

Percentage of Children 19-35 Months of Age Receiving 3 or More Doses of Hepatitis B Vaccine



Data compiled by the ALC from National Immunization Surveys, 1995-2017¹, <https://www.cdc.gov/vaccines/imz-managers/coverage/childvaxview/data-reports/hepb/index.html>

HEPATITIS B BIRTH DOSE VACCINATION COVERAGE

1 or more dose among infants within 3 days of birth

	Percentage of infants receiving			Rank among other states according to		
	1 dose within 1 day of birth*	1 dose within 2 days of birth	1 dose within 3 days of birth*	1 dose within 1 day of birth	1 dose within 2 days of birth	1 dose within 3 days of birth
2003		67.9 ± 6.3%		N/A	7	N/A
2004		69.0 ± 7.4%		N/A	9	N/A
2005		58.5 ± 7.2%		N/A	18	N/A
2006	62.6 ± 5.8%	66.9 ± 5.6%	67.4 ± 5.6%	7	12	14
2007	63.5 ± 7.5%	65.0 ± 7.4%	65.9 ± 7.4%	10	15	17
2008	64.3 ± 7.0%	67.7 ± 6.7%	68.1 ± 6.7%	6	8	12
2009	67.9 ± 8.2%	70.3 ± 8.1%	72.6 ± 7.7%	7	11	8
2010	77.3 ± 5.9%	80.1 ± 5.5%	80.1 ± 5.5%	5	3	5
2011	74.6 ± 7.6%	76.8 ± 7.4%	77.7 ± 7.4%	5	11	10
2012	74.5 ± 5.8%	76.9 ± 5.6%	78.3 ± 5.4%	9	15	15
2013	72.3 ± 6.9%	77.2 ± 6.5%	77.2 ± 6.5%	17	16	22
2014	75.2 ± 7.1%	78.7 ± 6.7%	78.9 ± 6.6%	9	15	17
2015	80.5 ± 5.9%	82.6 ± 5.5%	83.3 ± 5.4%	1	3	2
2016	71.9 ± 7.0%	75.4 ± 6.5%	75.9 ± 6.5%	7	13	14
2017	70.9 ± 8.2%	71.5 ± 8.2%	72.6 ± 8.1%	18	34	34

*No data available 2003-2005

Day 3: 73.6 ± 1.6%

2017 HIGHEST BIRTH DOSE COVERAGE

Day 1: 82.0 ± 5.7% (Kentucky)

Day 2: 84.1 ± 5.6% (Kentucky)

Day 3: 84.1 ± 5.6% (Kentucky)

2017 U.S. NATIONAL AVERAGE

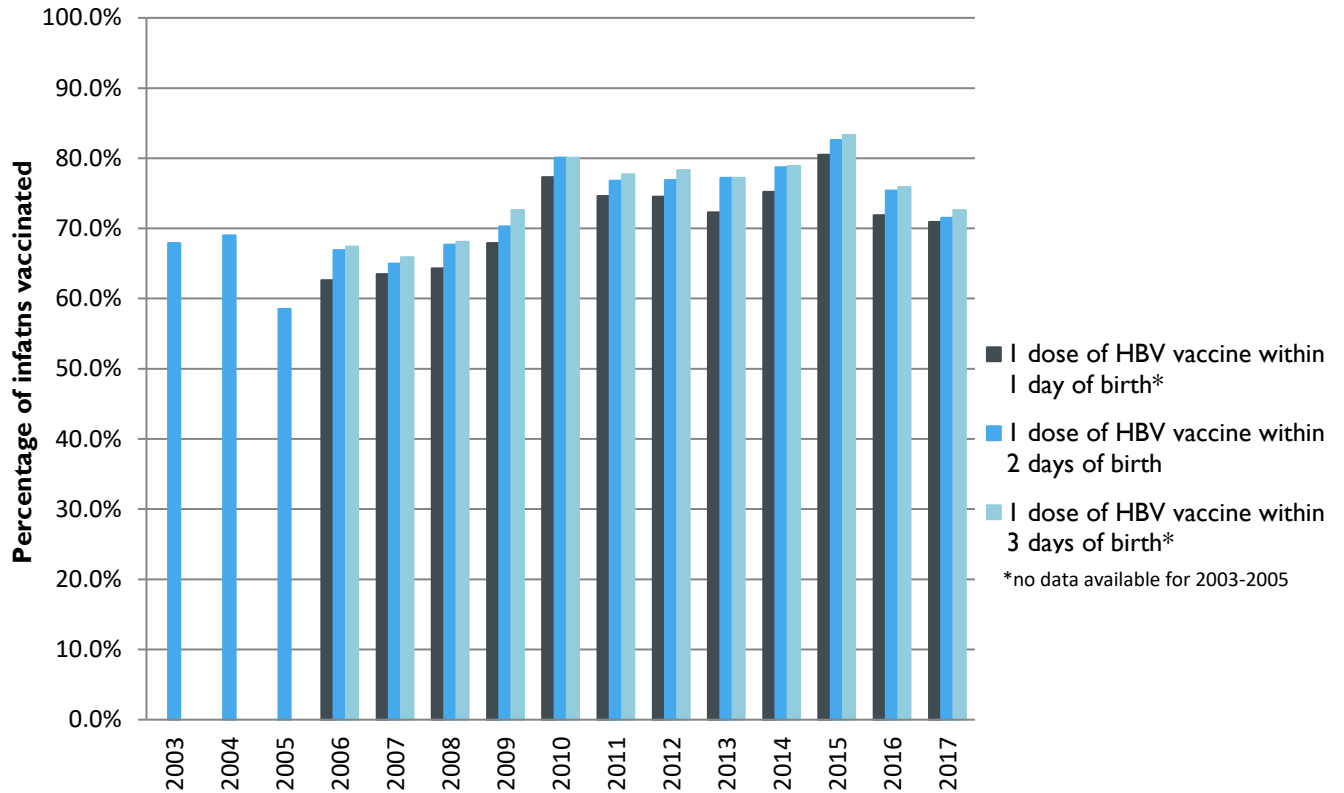
Day 1: 65.7 ± 1.6%

Day 2: 72.0 ± 1.6%

Data compiled by the ALC from National Immunization Surveys, 1995-2017¹,
<https://www.cdc.gov/vaccines/imz-managers/coverage/childvaxview/data-reports/hepb/index.html>

GRAPH:

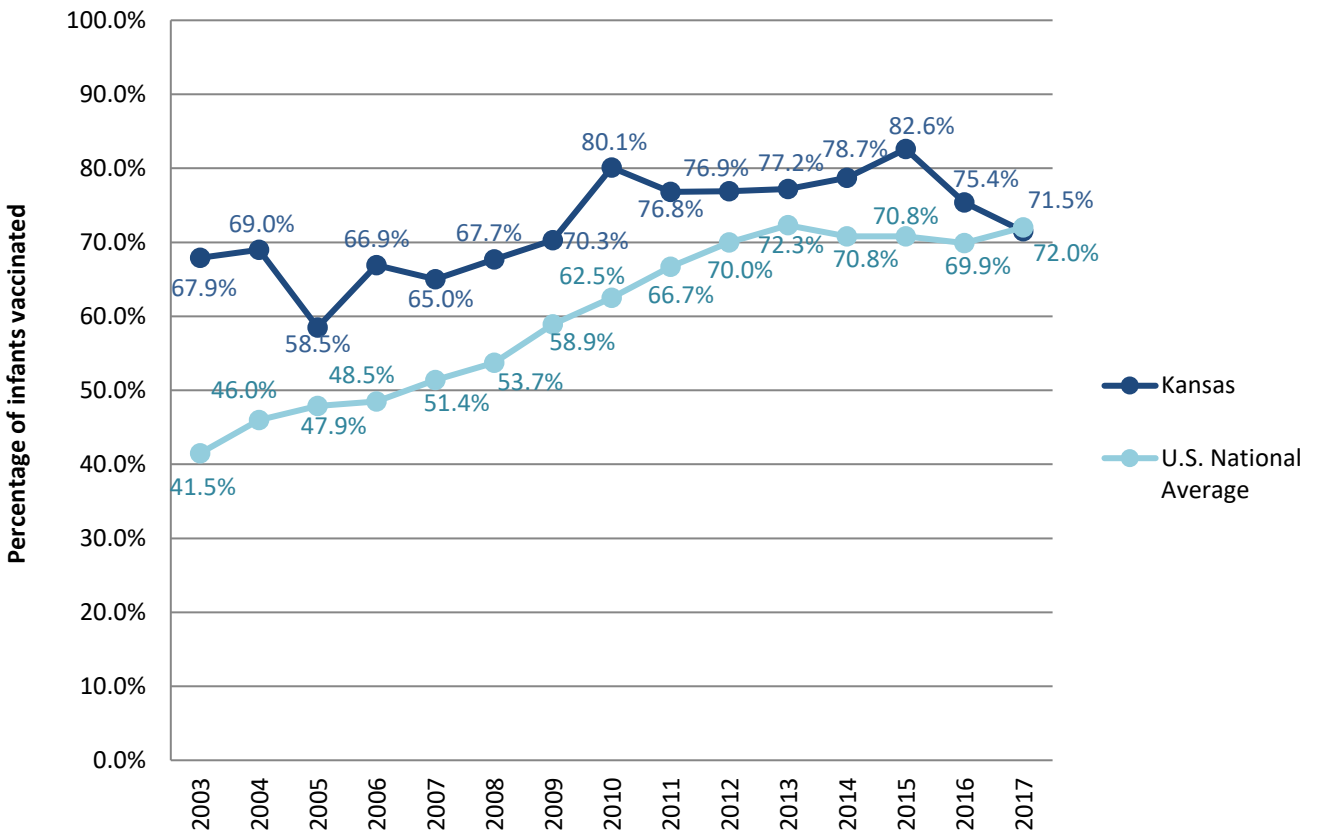
Estimated Vaccination Coverage for Hepatitis B Vaccine among Children from Birth to 3 Days of Age in Kansas



Data compiled by the ALC from National Immunization Surveys, 1995-2017¹,
<https://www.cdc.gov/vaccines/imz-managers/coverage/childvaxview/data-reports/hepb/index.html>

GRAPH:

Percentage of Infants Receiving 1 Dose of Hepatitis B Vaccine within 2 Days of Birth



Data compiled by the ALC from National Immunization Surveys, 1995-2017¹, <https://www.cdc.gov/vaccines/imz-managers/coverage/childvaxview/data-reports/hepb/index.html>

¹ The data from the National Immunization Surveys constitute a composite of data from children who were 19-35 months of age at the time of the survey. Therefore, the data might reflect a different estimate from the states' own birth cohort data.