

ILLINOIS

CONTACT THE STAFF

COORDINATOR:

Jodi Morgan, BSN RN CIC
Email: Jodi.morgan@illinois.gov
Phone: 217-782-2016
Fax: 217-524-0962

ADDRESS:

Illinois Department of Public Health
525 W. Jefferson Street
Springfield, IL 62761

SCREENING REQUIREMENTS

Does the jurisdiction require screening of pregnant women for hepatitis B infection or hepatitis B surface antigen (HBsAg)?

Yes - Ill. Admin. Code tit. 77, § 690.451 and Ill. Admin. Code tit. 77, § 350.3220

Does the jurisdiction specifically require reporting of positive HBsAg status in pregnant women?

Yes - Ill. Admin. Code tit. 77, § 690.451

COMPLETION OF HEPATITIS B VACCINATION SERIES

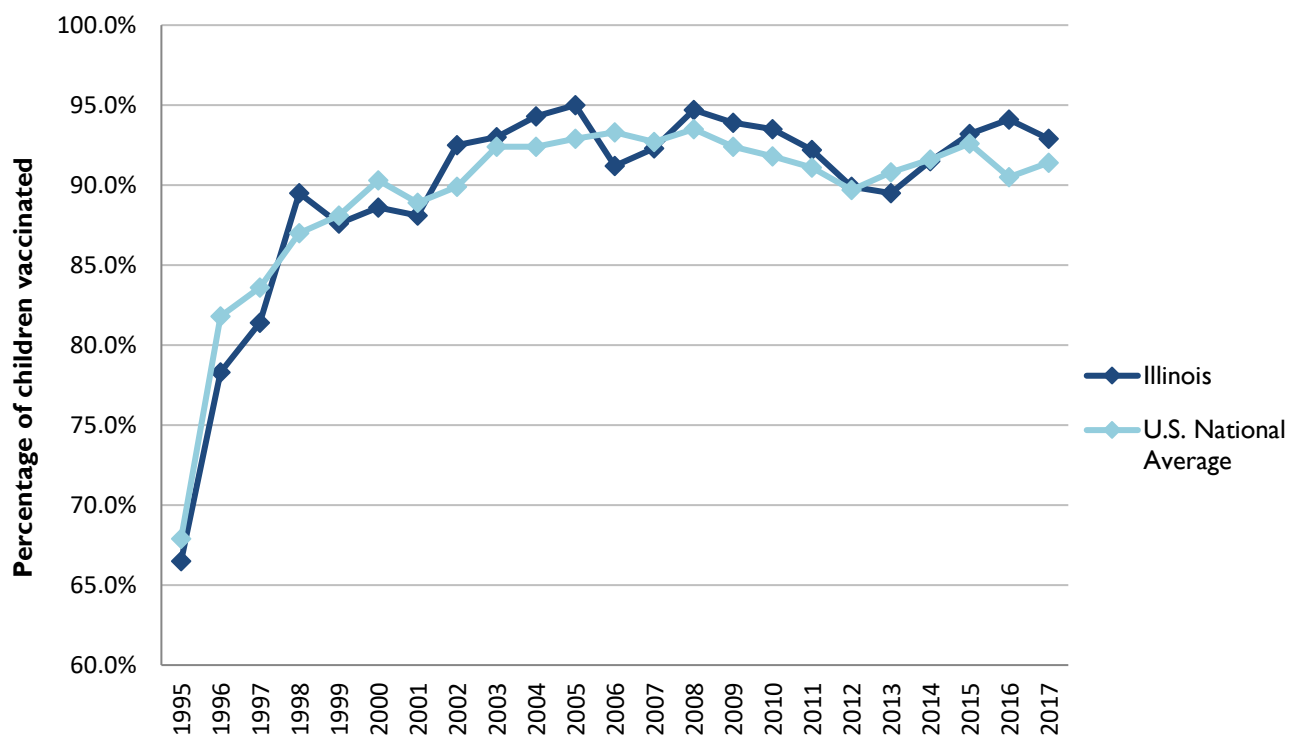
3 or more doses among children 19-35 months of age

	Percentage of children 19-35 months of age receiving 3 or more doses	Rank among other states	U.S. National Average	#1 ranked state and coverage
1995	66.5 ± 6.1%	25	67.9 ± 1.3%	88.5 ± 5.4% (South Carolina)
1996	78.3 ± 4.2%	38	81.8 ± 0.9%	95.8 ± 2.2% (South Carolina)
1997	81.4 ± 4.0%	39	83.6 ± 0.8%	91.6 ± 4.2% (New Jersey)
1998	89.5 ± 3.1%	13	87.0 ± 0.7%	94.1 ± 2.7% (South Carolina)
1999	87.6 ± 3.4%	34	88.1 ± 0.7%	94.0 ± 3.1% (Rhode Island)
2000	88.6 ± 3.1%	37	90.3 ± 0.6%	96.4 ± 1.9% (Rhode Island)
2001	88.1 ± 3.1%	30	88.9 ± 0.7%	95.8 ± 2.2% (Rhode Island)
2002	92.5 ± 2.7%	12	89.9 ± 0.7%	97.0 ± 2.0% (Rhode Island)
2003	93.0 ± 2.8%	21	92.4 ± 0.6%	98.2 ± 1.4% (Connecticut)
2004	94.3 ± 2.4%	16	92.4 ± 0.6%	96.8 ± 1.7% (Florida)
2005	95.0 ± 2.6%	11	92.9 ± 0.6%	97.9 ± 2.0% (Massachusetts)
2006	91.2 ± 4.8%	39	93.3 ± 0.6%	97.8 ± 1.6% (Rhode Island)
2007	92.3 ± 3.0%	34	92.7 ± 0.7%	98.6 ± 1.5% (New Hampshire)
2008	94.7 ± 2.1%	16	93.5 ± 0.7%	98.1 ± 1.6% (Connecticut)
2009	93.9 ± 2.6%	22	92.4 ± 0.7%	98.8 ± 1.5% (Rhode Island)
2010	93.5 ± 2.6%	23	91.8 ± 0.7%	98.3 ± 1.5% (North Dakota)
2011	92.2 ± 3.0%	16	91.1 ± 0.7%	97.1 ± 1.7% (Louisiana)
2012	89.9 ± 3.0%	28	89.7 ± 0.9%	96.3 ± 3.0% (Georgia)
2013	89.5 ± 3.6%	35	90.8 ± 1.0%	96.7 ± 2.3% (Rhode Island)
2014	91.5 ± 3.3%	34	91.6 ± 0.9%	97.6 ± 1.8% (Louisiana)
2015	93.2 ± 2.3%	24	92.6 ± 0.7%	97.3 ± 2.3% (Connecticut)
2016	94.1 ± 2.3%	13	90.5 ± 1.1%	97.4 ± 1.9% (Iowa)
2017	92.9 ± 2.6%	18	91.4 ± 0.9%	97.7 ± 1.6% (North Dakota)

Data compiled by the ALC from National Immunization Surveys, 1995-2017¹,
<https://www.cdc.gov/vaccines/imz-managers/coverage/childvaxview/data-reports/hepb/index.html>

GRAPH:

Percentage of Children 19-35 Months of Age Receiving 3 or More Doses of Hepatitis B Vaccine



Data compiled by the ALC from National Immunization Surveys, 1995-2017¹,
<https://www.cdc.gov/vaccines/imz-managers/coverage/childvaxview/data-reports/hepb/index.html>

HEPATITIS B BIRTH DOSE VACCINATION COVERAGE

1 or more dose among infants within 3 days of birth

	Percentage of infants receiving			Rank among other states according to		
	1 dose within 1 day of birth*	1 dose within 2 days of birth	1 dose within 3 days of birth*	1 dose within 1 day of birth	1 dose within 2 days of birth	1 dose within 3 days of birth
2003		36.6 ± 5.2%		N/A	33	N/A
2004		40.1 ± 5.4%		N/A	34	N/A
2005		48.5 ± 7.5%		N/A	31	N/A
2006	45.7 ± 6.2%	50.3 ± 6.3%	51.6 ± 6.3%	28	32	33
2007	43.2 ± 5.2%	46.4 ± 5.3%	47.5 ± 5.3%	32	38	38
2008	49.0 ± 5.1%	54.3 ± 5.1%	56.4 ± 5.1%	29	35	34
2009	54.5 ± 5.8%	56.9 ± 5.7%	58.6 ± 5.7%	25	34	36
2010	61.4 ± 5.3%	64.7 ± 5.2%	66.1 ± 5.2%	20	26	30
2011	60.2 ± 5.7%	64.7 ± 5.4%	69.4 ± 5.2%	31	33	34
2012	66.0 ± 5.1%	70.1 ± 5.0%	71.3 ± 5.0%	23	28	33
2013	63.4 ± 5.4%	68.1 ± 5.2%	71.4 ± 5.1%	29	38	37
2014	65.4 ± 5.7%	71.5 ± 5.5%	73.3 ± 5.4%	30	32	33
2015	64.2 ± 4.8%	69.2 ± 4.7%	71.2 ± 4.6%	29	33	33
2016	63.5 ± 5.1%	70.3 ± 4.8%	71.0 ± 4.8%	30	29	35
2017	64.5 ± 5.1%	72.1 ± 4.8%	73.4 ± 4.7%	35	32	31

*No data available 2003-2005

2017 U.S. NATIONAL AVERAGE

Day 1: 65.7 ± 1.6%
Day 2: 72.0 ± 1.6%
Day 3: 73.6 ± 1.6%

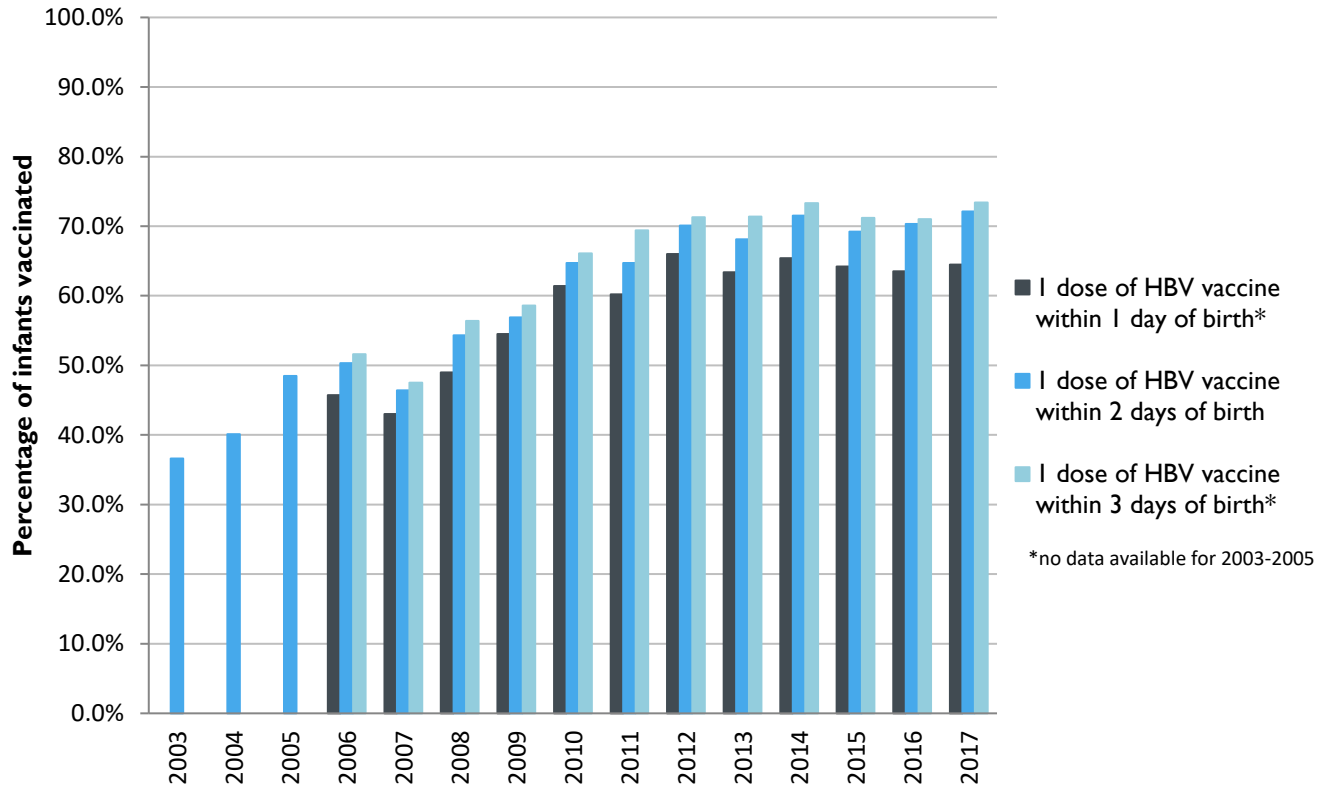
2017 HIGHEST BIRTH DOSE COVERAGE

Day 1: 82.0 ± 5.7% (Kentucky)
Day 2: 84.1 ± 5.6% (Kentucky)
Day 3: 84.1 ± 5.6% (Kentucky)

Data compiled by the ALC from National Immunization Surveys, 1995-2017¹,
<https://www.cdc.gov/vaccines/imz-managers/coverage/childvaxview/data-reports/hepb/index.html>

GRAPH:

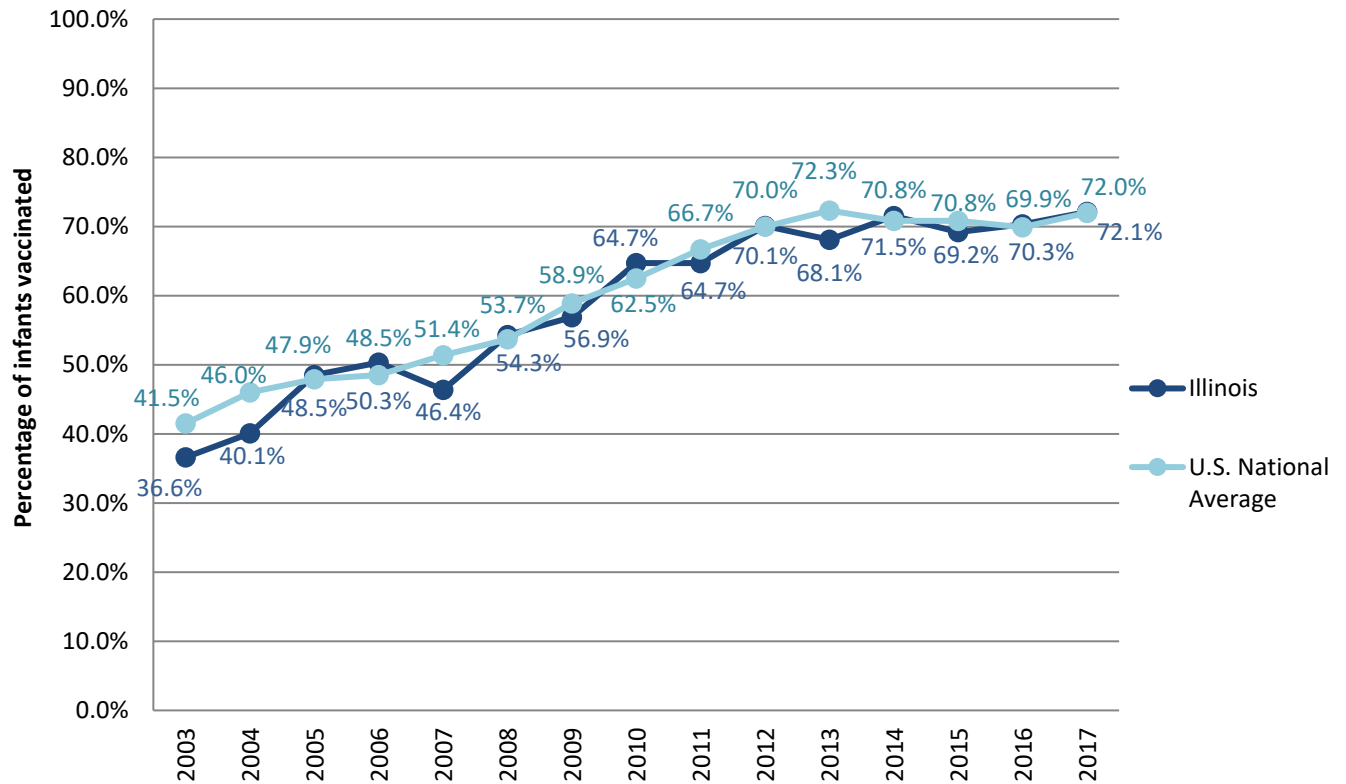
Estimated Vaccination Coverage for Hepatitis B Vaccine among Children from Birth to 3 Days of Age in Illinois



Data compiled by the ALC from National Immunization Surveys, 1995-2017¹,
<https://www.cdc.gov/vaccines/imz-managers/coverage/childvaxview/data-reports/hepb/index.html>

GRAPH:

Percentage of Infants Receiving 1 Dose of Hepatitis B Vaccine within 2 Days of Birth



Data compiled by the ALC from National Immunization Surveys, 1995-2017¹,
<https://www.cdc.gov/vaccines/imz-managers/coverage/childvaxview/data-reports/hepb/index.html>

¹ The data from the National Immunization Surveys constitute a composite of data from children who were 19-35 months of age at the time of the survey. Therefore, the data might reflect a different estimate from the states' own birth cohort data.