

# HAWAII

## CONTACT THE STAFF

### COORDINATOR:

Cathy Wu  
Email: [cathy.wu@doh.hawaii.gov](mailto:cathy.wu@doh.hawaii.gov)  
Phone: 808-586-8359  
Fax: 808-586-7511

### ADDRESS:

Hawaii Department of Health Immunization  
Branch  
1250 Punchbowl Street, 4th Floor  
Honolulu, HI 96813

## SCREENING REQUIREMENTS

Does the jurisdiction require screening of pregnant women for hepatitis B infection or hepatitis B surface antigen (HBsAg)?

**Yes** - Weil's Code of Hawaii Rules § 11-156-8.1

Does the jurisdiction specifically require reporting of positive HBsAg status in pregnant women?

**Yes** - Weil's Code of Hawaii Rules § 11-156-8.1

## COMPLETION OF HEPATITIS B VACCINATION SERIES

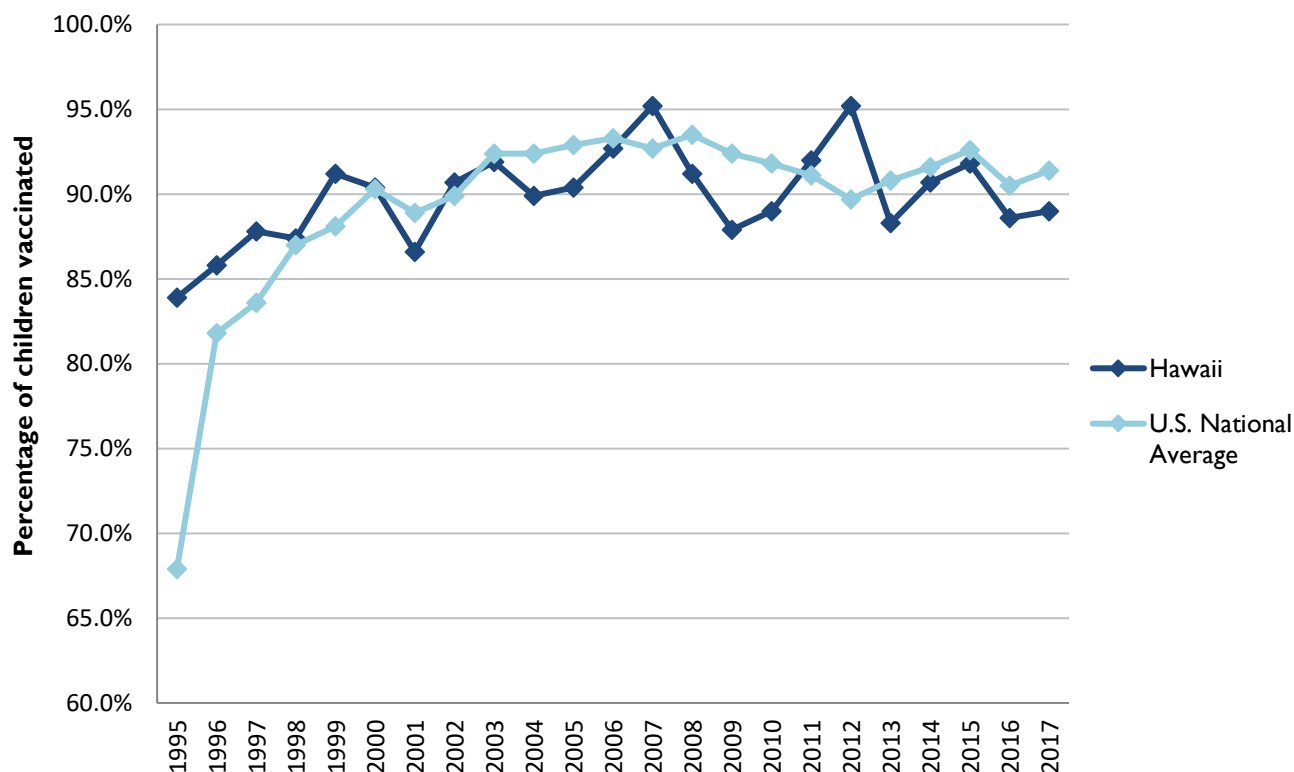
3 or more doses among children 19-35 months of age

	Percentage of children 19-35 months of age receiving 3 or more doses	Rank among other states	U.S. National Average	#1 ranked state and coverage
1995	83.9 ± 7.1%	2	67.9 ± 1.3%	88.5 ± 5.4% (South Carolina)
1996	85.8 ± 5.1%	13	81.8 ± 0.9%	95.8 ± 2.2% (South Carolina)
1997	87.8 ± 4.6%	9	83.6 ± 0.8%	91.6 ± 4.2% (New Jersey)
1998	87.4 ± 4.5%	23	87.0 ± 0.7%	94.1 ± 2.7% (South Carolina)
1999	91.2 ± 3.5%	11	88.1 ± 0.7%	94.0 ± 3.1% (Rhode Island)
2000	90.4 ± 4.5%	26	90.3 ± 0.6%	96.4 ± 1.9% (Rhode Island)
2001	86.6 ± 5.7%	37	88.9 ± 0.7%	95.8 ± 2.2% (Rhode Island)
2002	90.7 ± 4.3%	25	89.9 ± 0.7%	97.0 ± 2.0% (Rhode Island)
2003	91.9 ± 3.4%	30	92.4 ± 0.6%	98.2 ± 1.4% (Connecticut)
2004	89.9 ± 3.9%	43	92.4 ± 0.6%	96.8 ± 1.7% (Florida)
2005	90.4 ± 4.7%	40	92.9 ± 0.6%	97.9 ± 2.0% (Massachusetts)
2006	92.7 ± 3.6%	32	93.3 ± 0.6%	97.8 ± 1.6% (Rhode Island)
2007	95.2 ± 2.9%	12	92.7 ± 0.7%	98.6 ± 1.5% (New Hampshire)
2008	91.2 ± 5.3%	44	93.5 ± 0.7%	98.1 ± 1.6% (Connecticut)
2009	87.9 ± 5.0%	47	92.4 ± 0.7%	98.8 ± 1.5% (Rhode Island)
2010	89.0 ± 4.4%	44	91.8 ± 1.5%	98.3 ± 1.5% (North Dakota)
2011	92.0 ± 5.4%	18	91.1 ± 0.7%	97.1 ± 1.7% (Louisiana)
2012	95.2 ± 2.3%	3	89.7 ± 0.9%	96.3 ± 3.0% (Georgia)
2013	88.3 ± 4.9%	45	90.8 ± 1.0%	96.7 ± 2.3% (Rhode Island)
2014	90.7 ± 4.5%	38	91.6 ± 0.9%	97.6 ± 1.8% (Louisiana)
2015	91.8 ± 3.6%	33	92.6 ± 0.7%	97.3 ± 2.3% (Connecticut)
2016	88.6 ± 4.4%	43	90.5 ± 1.1%	97.4 ± 1.9% (Iowa)
2017	89.0 ± 4.7%	46	91.4 ± 0.9%	97.7 ± 1.6% (North Dakota)

Data compiled by the ALC from National Immunization Surveys, 1995-2017<sup>1</sup>,  
<https://www.cdc.gov/vaccines/imz-managers/coverage/childvaxview/data-reports/hepb/index.html>

## GRAPH:

Percentage of Children 19-35 Months of Age Receiving 3 or More Doses of Hepatitis B Vaccine



Data compiled by the ALC from National Immunization Surveys, 1995-2017<sup>1</sup>,  
<https://www.cdc.gov/vaccines/imz-managers/coverage/childvaxview/data-reports/hepb/index.html>

## HEPATITIS B BIRTH DOSE VACCINATION COVERAGE

1 or more dose among infants within 3 days of birth

	Percentage of infants receiving			Rank among other states according to		
	1 dose within 1 day of birth*	1 dose within 2 days of birth	1 dose within 3 days of birth*	1 dose within 1 day of birth	1 dose within 2 days of birth	1 dose within 3 days of birth
2003		54.5 ± 6.5%		N/A	22	N/A
2004		47.0 ± 6.7%		N/A	31	N/A
2005		51.3 ± 8.2%		N/A	28	N/A
2006	51.6 ± 8.0%	61.1 ± 7.8%	62.6 ± 7.8%	21	19	19
2007	59.5 ± 7.9%	66.5 ± 7.6%	68.9 ± 7.5%	14	13	13
2008	57.2 ± 7.4%	67.0 ± 7.2%	68.3 ± 7.2%	17	9	11
2009	59.7 ± 7.6%	64.1 ± 7.4%	65.4 ± 7.3%	18	23	24
2010	65.2 ± 6.3%	69.3 ± 6.1%	71.5 ± 6.0%	11	15	14
2011	69.1 ± 8.1%	72.3 ± 8.0%	72.9 ± 8.0%	15	18	21
2012	75.2 ± 6.3%	81.9 ± 5.4%	82.7 ± 5.2%	6	3	5
2013	74.2 ± 6.9%	76.7 ± 6.7%	77.3 ± 6.7%	8	19	21
2014	76.6 ± 6.8%	79.5 ± 6.5%	79.5 ± 6.5%	5	11	12
2015	72.2 ± 6.4%	74.6 ± 6.4%	75.5 ± 6.3%	10	20	21
2016	70.5 ± 6.3%	74.0 ± 6.0%	75.4 ± 5.8%	13	16	17
2017	73.0 ± 6.9%	75.8 ± 6.7%	76.3 ± 6.7%	15	18	22

\*No data available 2003-2005

### 2017 U.S. NATIONAL AVERAGE

Day 1: 65.7 ± 1.6%  
Day 2: 72.0 ± 1.6%  
Day 3: 73.6 ± 1.6%

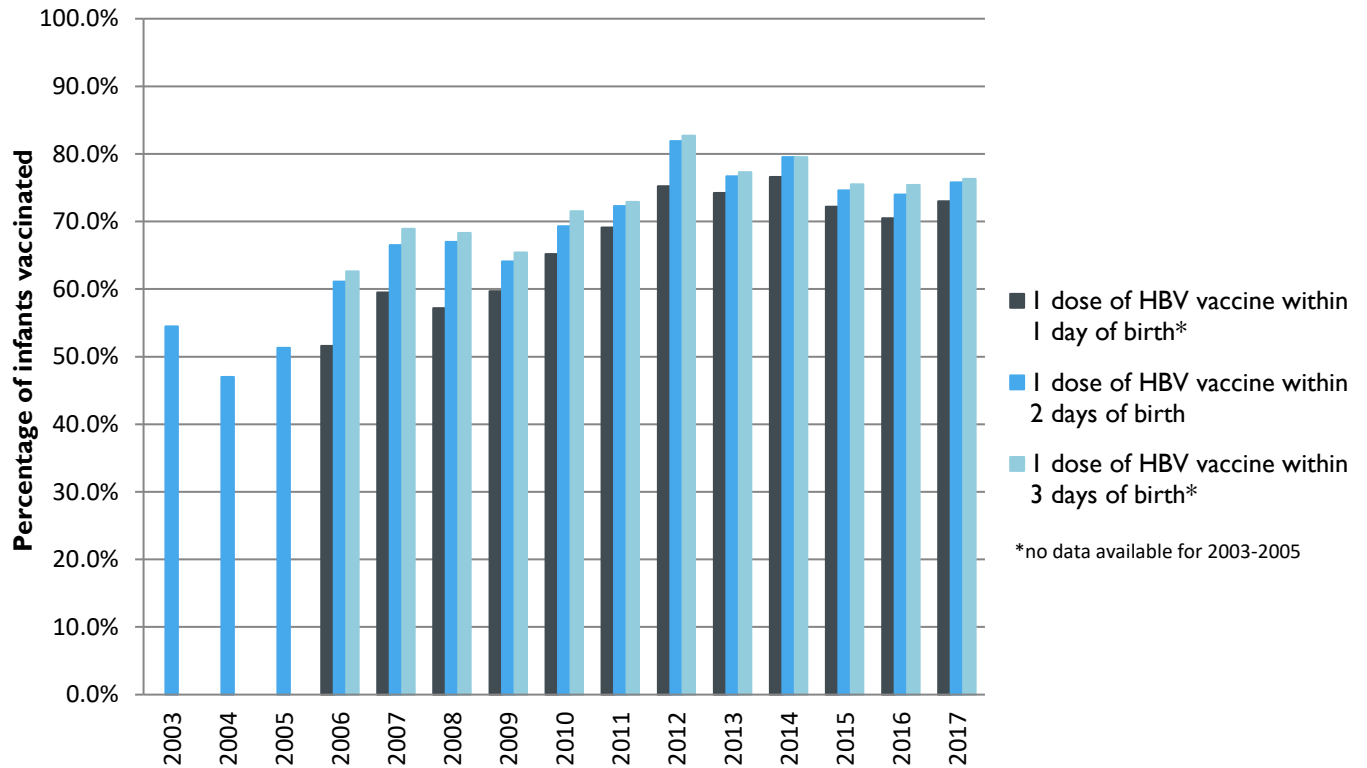
### 2017 HIGHEST BIRTH DOSE COVERAGE

Day 1: 82.0 ± 5.7% (Kentucky)  
Day 2: 84.1 ± 5.6% (Kentucky)  
Day 3: 84.1 ± 5.6% (Kentucky)

Data compiled by the ALC from National Immunization Surveys, 1995-2017<sup>1</sup>,  
<https://www.cdc.gov/vaccines/imz-managers/coverage/childvaxview/data-reports/hepb/index.html>

## GRAPH:

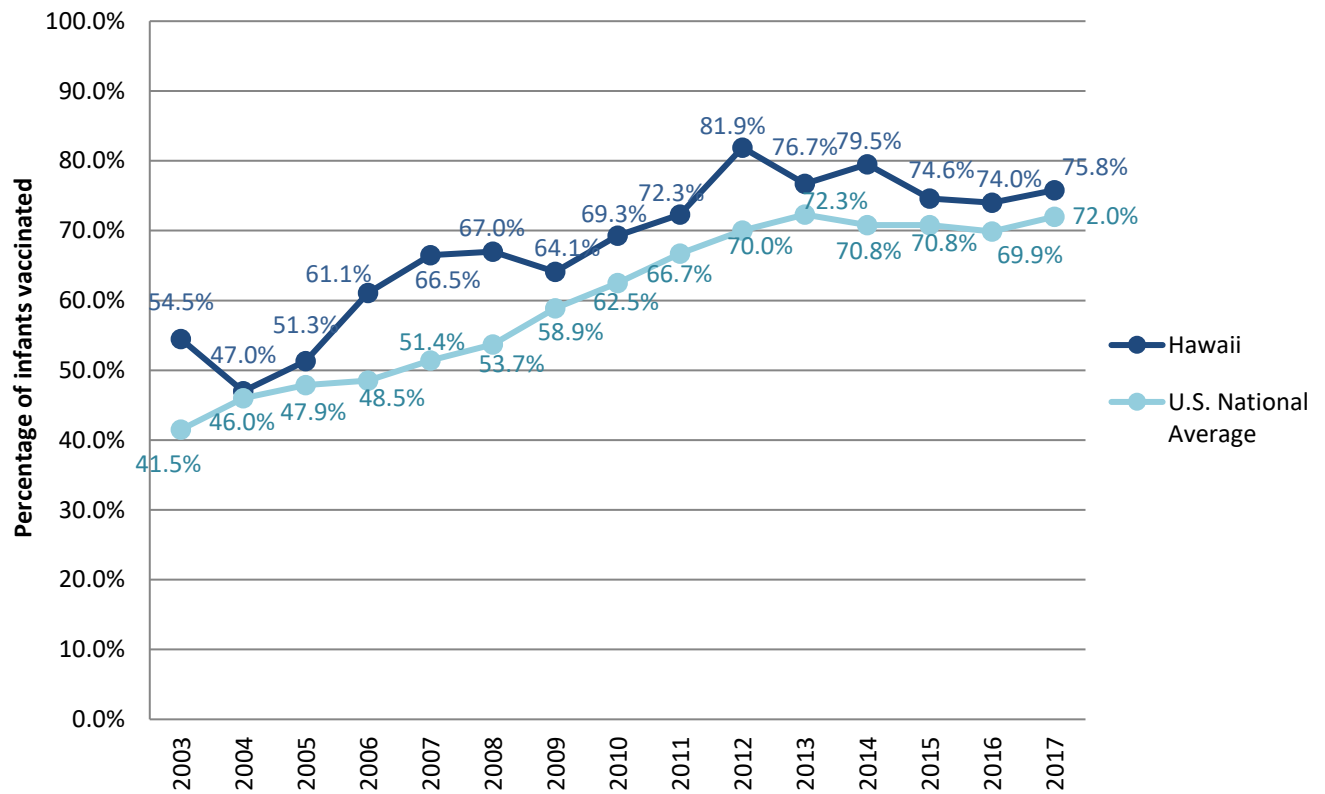
Estimated Vaccination Coverage for Hepatitis B Vaccine among Children from Birth to 3 Days of Age in Hawaii



Data compiled by the ALC from National Immunization Surveys, 1995-2017<sup>1</sup>,  
<https://www.cdc.gov/vaccines/imz-managers/coverage/childvaxview/data-reports/hepb/index.html>

## GRAPH:

### Percentage of Infants Receiving 1 Dose of Hepatitis B Vaccine within 2 Days of Birth



Data compiled by the ALC from National Immunization Surveys, 1995-2017<sup>1</sup>,  
<https://www.cdc.gov/vaccines/imz-managers/coverage/childvaxview/data-reports/hepb/index.html>

<sup>1</sup> The data from the National Immunization Surveys constitute a composite of data from children who were 19-35 months of age at the time of the survey. Therefore, the data might reflect a different estimate from the states' own birth cohort data.