

CONNECTICUT

CONTACT THE STAFF

COORDINATOR:

Kristin Gerard, MPH
Email: Kristin.gerard@ct.gov
Phone: 860-509-8187
Program Phone: 860-509-7729
Fax: 860-707-1905

ADDRESS:

Connecticut Dept. of Public Health
Immunization Program
410 Capitol Avenue, MS #11 MUN
Hartford, CT 06134-0308

SCREENING REQUIREMENTS

Does the jurisdiction require screening of pregnant women for hepatitis B infection or hepatitis B surface antigen (HBsAg)?

No

Does the jurisdiction specifically require reporting of positive HBsAg status in pregnant women?

Yes - Connecticut General Statute § 19a-2a (as of January 2005)

COMPLETION OF HEPATITIS B VACCINATION SERIES

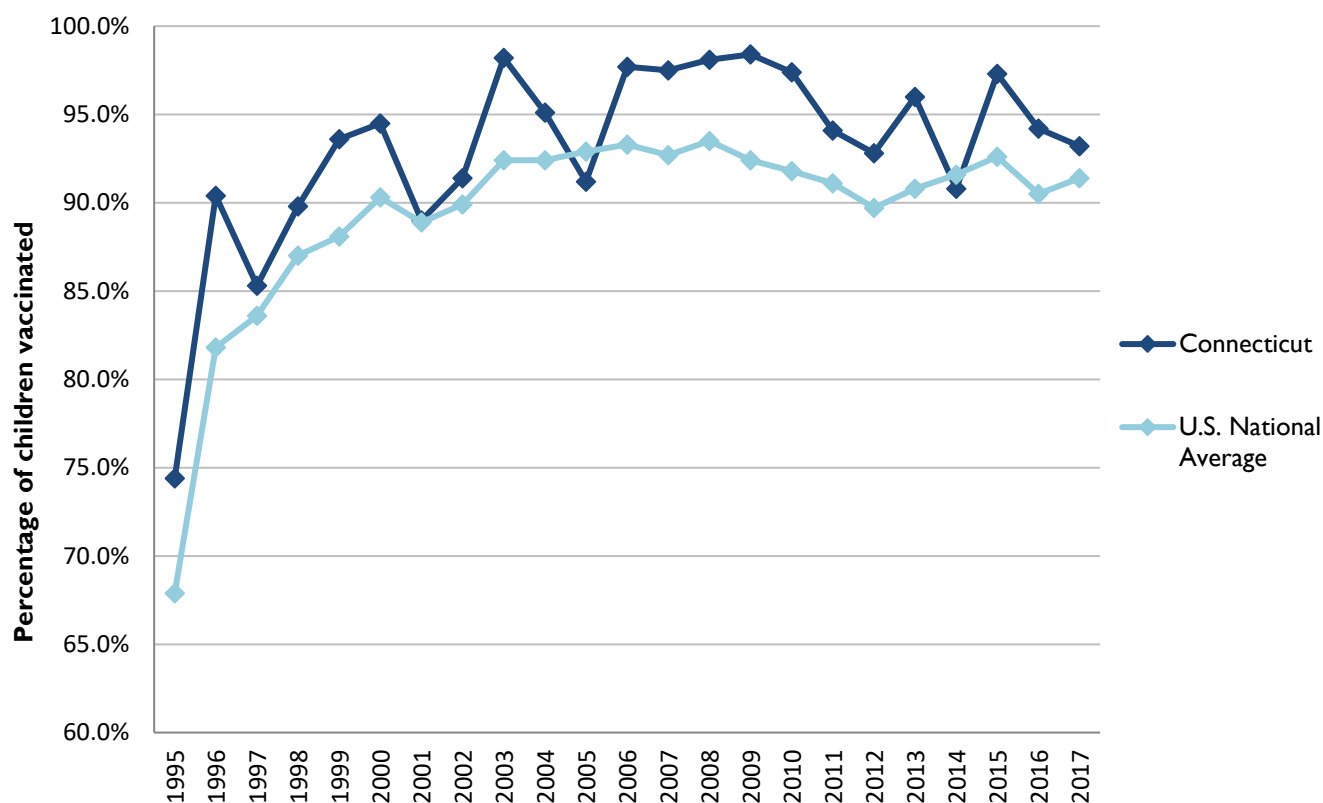
3 or more doses among children 19-35 months of age

	Percentage of children 19-35 months of age receiving 3 or more doses	Rank among other states	U.S. National Average	#1 ranked state and coverage
1995	74.4 ± 6.4%	12	67.9 ± 1.3%	88.5 ± 5.4% (South Carolina)
1996	90.4 ± 3.8%	2	81.8 ± 0.9%	95.8 ± 2.2% (South Carolina)
1997	85.3 ± 4.2%	23	83.6 ± 0.8%	91.6 ± 4.2% (New Jersey)
1998	89.8 ± 3.8%	11	87.0 ± 0.7%	94.1 ± 2.7% (South Carolina)
1999	93.6 ± 2.9%	4	88.1 ± 0.7%	94.0 ± 3.1% (Rhode Island)
2000	94.5 ± 2.9%	6	90.3 ± 0.6%	96.4 ± 1.9% (Rhode Island)
2001	89.0 ± 4.8%	24	88.9 ± 0.7%	95.8 ± 2.2% (Rhode Island)
2002	91.4 ± 3.8%	22	89.9 ± 0.7%	97.0 ± 2.0% (Rhode Island)
2003	98.2 ± 1.4%	1	92.4 ± 0.6%	98.2 ± 1.4% (Connecticut)
2004	95.1 ± 3.6%	7	92.4 ± 0.6%	96.8 ± 1.7% (Florida)
2005	91.2 ± 4.8%	35	92.9 ± 0.6%	97.9 ± 2.0% (Massachusetts)
2006	97.7 ± 2.2%	2	93.3 ± 0.6%	97.8 ± 1.6% (Rhode Island)
2007	97.5 ± 2.2%	4	92.7 ± 0.7%	98.6 ± 1.5% (New Hampshire)
2008	98.1 ± 1.6%	1	93.5 ± 0.7%	98.1 ± 1.6% (Connecticut)
2009	98.4 ± 1.3%	2	92.4 ± 0.7%	98.8 ± 1.5% (Rhode Island)
2010	97.4 ± 1.7%	3	91.8 ± 1.5%	98.3 ± 1.5% (North Dakota)
2011	94.1 ± 2.6%	9	91.1 ± 0.7%	97.1 ± 1.7% (Louisiana)
2012	92.8 ± 3.7%	10	89.7 ± 0.9%	96.3 ± 3.0% (Georgia)
2013	96.0 ± 2.7%	3	90.8 ± 1.0%	96.7 ± 2.3% (Rhode Island)
2014	90.8 ± 4.9%	36	91.6 ± 0.9%	97.6 ± 1.8% (Louisiana)
2015	97.3 ± 2.3%	1	92.6 ± 0.7%	97.3 ± 2.3% (Connecticut)
2016	94.2 ± 3.5%	11	90.5 ± 1.1%	97.4 ± 1.9% (Iowa)
2017	93.2 ± 3.7%	15	91.4 ± 0.9%	97.7 ± 1.6% (North Dakota)

Data compiled by the ALC from National Immunization Surveys, 1995-2017¹,
<https://www.cdc.gov/vaccines/imz-managers/coverage/childvaxview/data-reports/hepb/index.html>

GRAPH:

Percentage of Children 19-35 Months of Age Receiving 3 or More Doses of Hepatitis B Vaccine



Data compiled by the ALC from National Immunization Surveys, 1995-2017¹,
<https://www.cdc.gov/vaccines/imz-managers/coverage/childvaxview/data-reports/hepb/index.html>

HEPATITIS B BIRTH DOSE VACCINATION COVERAGE

1 or more dose among infants within 3 days of birth

	Percentage of infants receiving			Rank among other states according to		
	1 dose within 1 day of birth*	1 dose within 2 days of birth	1 dose within 3 days of birth*	1 dose within 1 day of birth	1 dose within 2 days of birth	1 dose within 3 days of birth
2003		65.2 ± 6.4%		N/A	9	N/A
2004		65.4 ± 7.4%		N/A	12	N/A
2005		62.0 ± 7.4%		N/A	14	N/A
2006	36.5 ± 6.8%	50.1 ± 7.0%	55.2 ± 7.0%	36	33	28
2007	41.8 ± 7.5%	50.9 ± 7.6%	54.0 ± 7.6%	34	26	34
2008	45.3 ± 7.8%	60.8 ± 7.4%	63.2 ± 7.2%	32	28	28
2009	32.4 ± 8.1%	45.3 ± 9.5%	46.8 ± 9.6%	48	47	45
2010	43.3 ± 7.6%	57.4 ± 7.8%	60.0 ± 7.7%	45	40	39
2011	58.9 ± 6.3%	68.9 ± 5.7%	71.1 ± 5.6%	32	28	26
2012	63.9 ± 6.3%	72.9 ± 5.9%	75.7 ± 5.7%	27	23	22
2013	61.3 ± 8.4%	74.6 ± 7.5%	75.2 ± 7.5%	33	27	29
2014	66.4 ± 7.7%	75.5 ± 6.8%	76.8 ± 6.7%	29	23	22
2015	67.1 ± 7.5%	79.7 ± 6.4%	81.6 ± 6.2%	23	6	4
2016	62.6 ± 7.0%	71.0 ± 6.6%	75.2 ± 6.3%	33	25	18
2017	70.7 ± 6.7%	76.5 ± 6.3%	78.5 ± 6%	19	17	15

*No data available 2003-2005

2017 U.S. NATIONAL AVERAGE

Day 1: 65.7 ± 1.6%
Day 2: 72.0 ± 1.6%
Day 3: 73.6 ± 1.6%

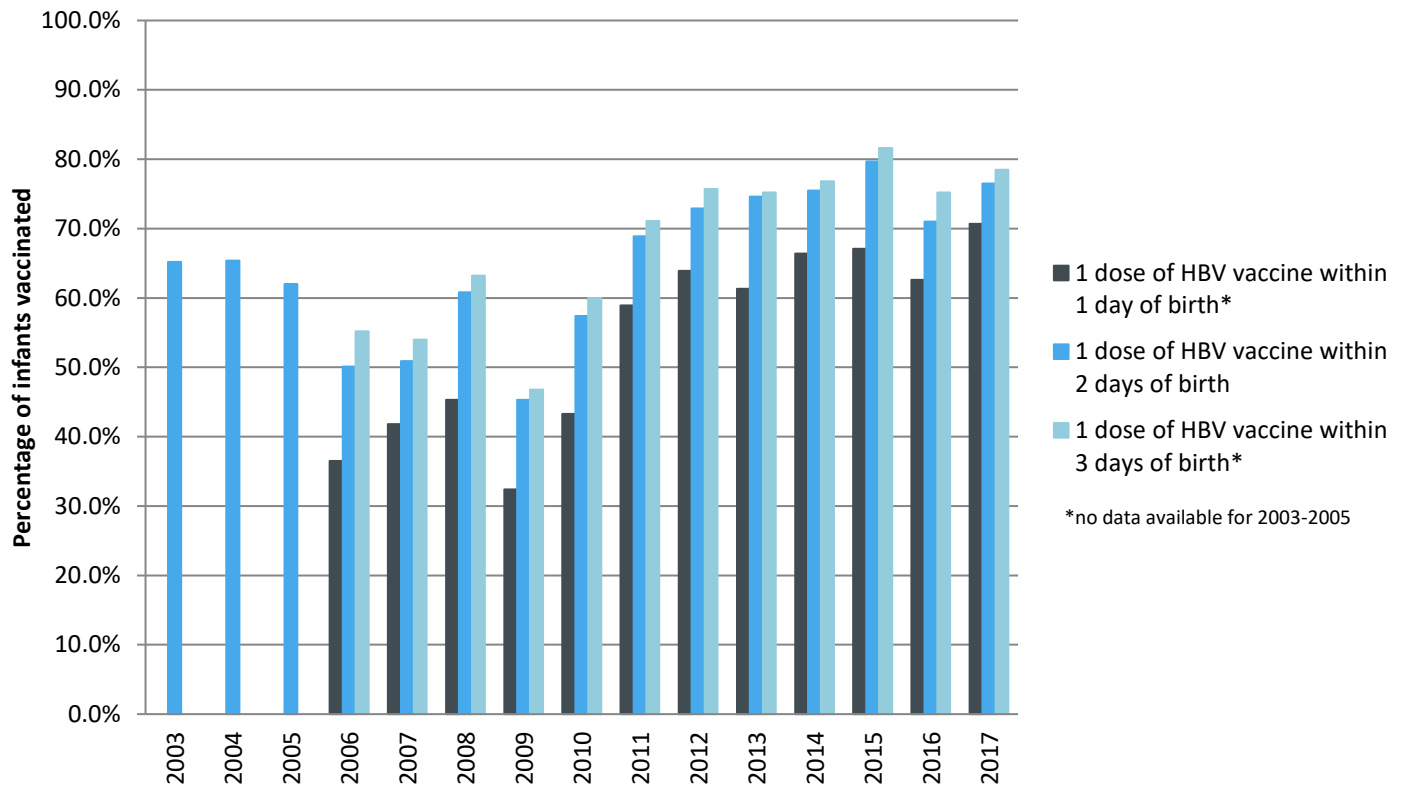
2017 HIGHEST BIRTH DOSE COVERAGE

Day 1: 82.0 ± 5.7% (Kentucky)
Day 2: 84.1 ± 5.6% (Kentucky)
Day 3: 84.1 ± 5.6% (Kentucky)

Data compiled by the ALC from National Immunization Surveys, 1995-2017¹,
<https://www.cdc.gov/vaccines/imz-managers/coverage/childvaxview/data-reports/hepb/index.html>

GRAPH:

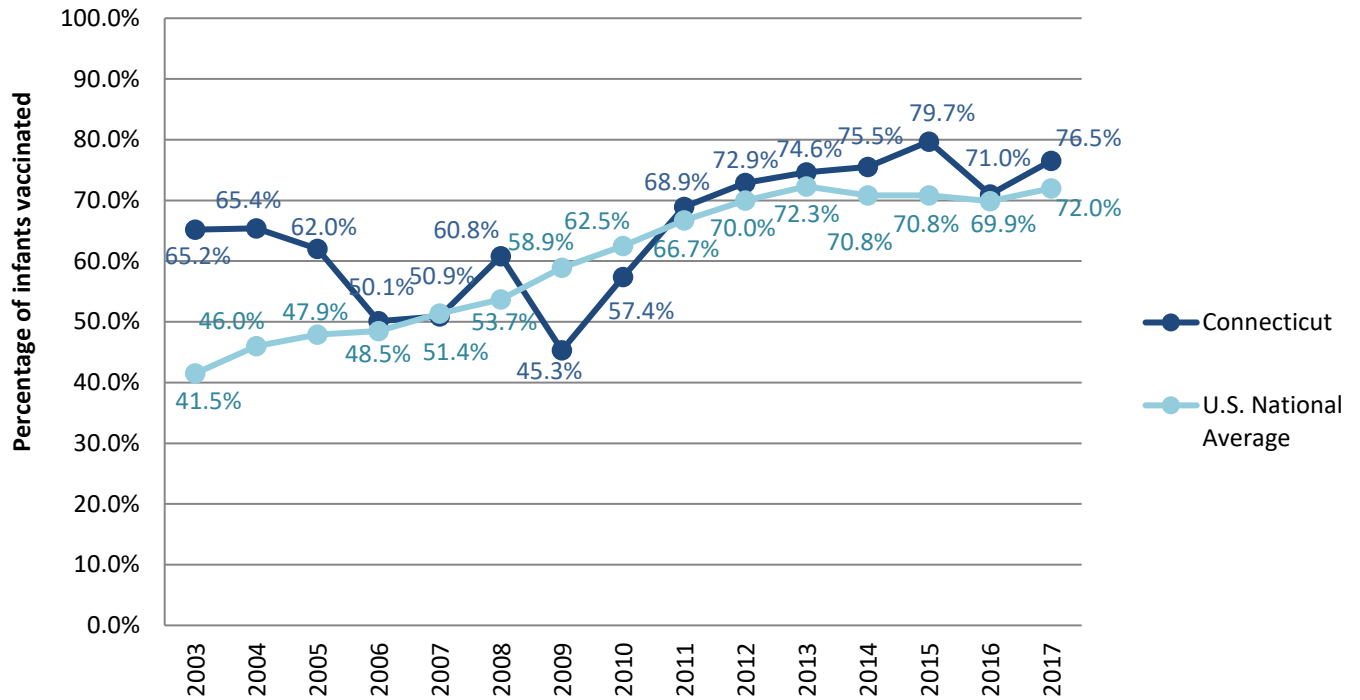
Estimated Vaccination Coverage for Hepatitis B Vaccine among Children from Birth to 3 Days of Age in Connecticut



Data compiled by the ALC from National Immunization Surveys, 1995-2017¹,
<https://www.cdc.gov/vaccines/imz-managers/coverage/childvaxview/data-reports/hepb/index.html>

GRAPH:

Percentage of Infants Receiving 1 Dose of Hepatitis B Vaccine within 2 Days of Birth



Data compiled by the ALC from National Immunization Surveys, 1995-2017¹, <https://www.cdc.gov/vaccines/imz-managers/coverage/childvaxview/data-reports/hepb/index.html>

¹ The data from the National Immunization Surveys constitute a composite of data from children who were 19-35 months of age at the time of the survey. Therefore, the data might reflect a different estimate from the states' own birth cohort data.