

ALABAMA

CONTACT THE STAFF

COORDINATOR:

LyTasha Foster
Email: lytasha.foster@adph.state.al.us
Phone: 334-206-2030
Fax: 334-206-2204

ADDRESS:

Immunization Division
Alabama Dept. of Public Health
RSA Tower
201 Monroe Street
Montgomery, AL 36104

To see a list of the Perinatal Hepatitis B Coordinators for each region of Alabama, go to:

<http://www.adph.org/Immunization/assets/PerinatalHepBCoordinatorMap.pdf>

SCREENING REQUIREMENTS

Does the jurisdiction require screening of pregnant women for hepatitis B infection or hepatitis B surface antigen (HBsAg)?

Yes - Ala. Admin. Code § 22-11A-16

Does the jurisdiction specifically require reporting of positive HBsAg status in pregnant women?

No

COMPLETION OF HEPATITIS B VACCINATION SERIES

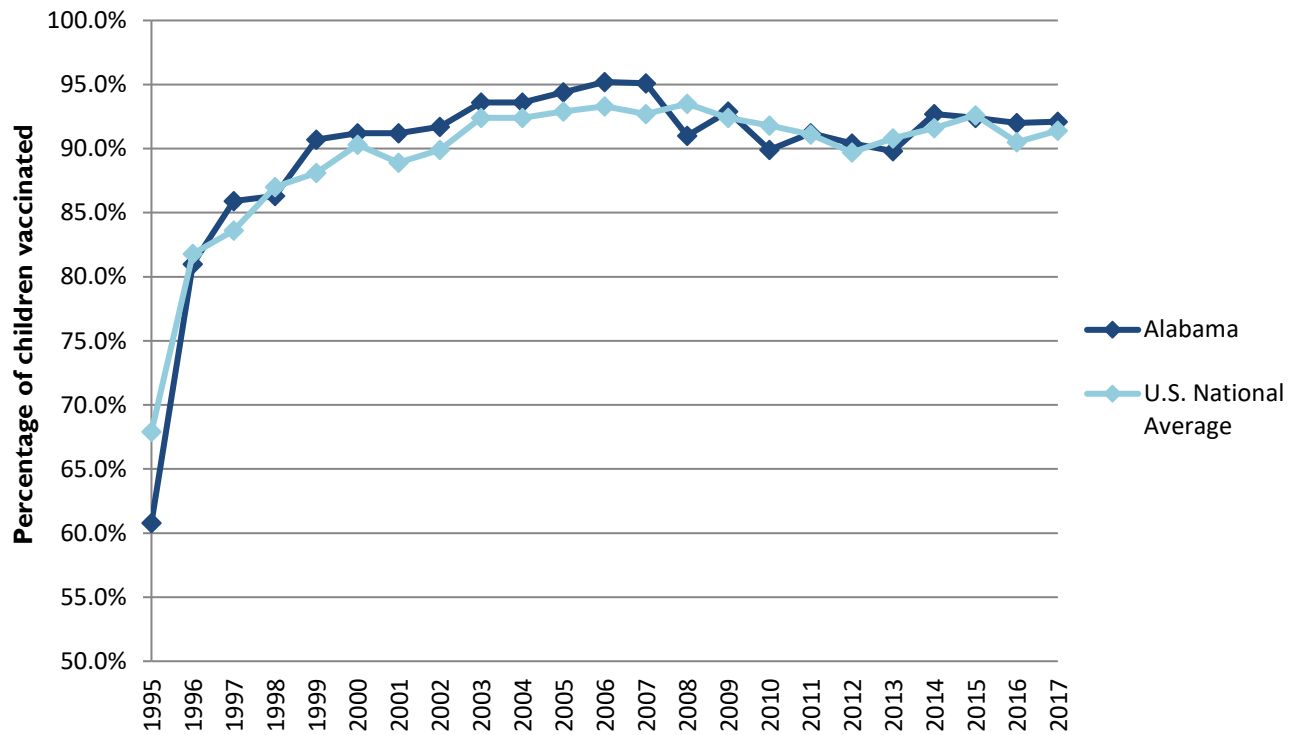
3 or more doses among children 19-35 months of age

	Percentage of children 19-35 months of age receiving 3 or more doses	Rank among other states	U.S. National Average	#1 ranked state and coverage
1995	60.8 ± 7.4%	34	67.9 ± 1.3%	88.5 ± 5.4% (South Carolina)
1996	81.0 ± 4.7%	26	81.8 ± 0.9%	95.8 ± 2.2% (South Carolina)
1997	85.9 ± 3.8%	19	83.6 ± 0.8%	91.6 ± 4.2% (New Jersey)
1998	86.3 ± 3.7%	31	87.0 ± 0.7%	94.1 ± 2.7% (South Carolina)
1999	90.7 ± 3.4%	17	88.1 ± 0.7%	94.0 ± 3.1% (Rhode Island)
2000	91.2 ± 3.1%	17	90.3 ± 0.6%	96.4 ± 1.9% (Rhode Island)
2001	91.2 ± 2.8%	12	88.9 ± 0.7%	95.8 ± 2.2% (Rhode Island)
2002	91.7 ± 3.2%	19	89.9 ± 0.7%	97.0 ± 2.0% (Rhode Island)
2003	93.6 ± 3.3%	17	92.4 ± 0.6%	98.2 ± 1.4% (Connecticut)
2004	93.6 ± 3.8%	24	92.4 ± 0.6%	96.8 ± 1.7% (Florida)
2005	94.4 ± 2.9%	15	92.9 ± 0.6%	97.9 ± 2.0% (Massachusetts)
2006	95.2 ± 2.8%	14	93.3 ± 0.6%	97.8 ± 1.6% (Rhode Island)
2007	95.1 ± 2.9%	13	92.7 ± 0.7%	98.6 ± 1.5% (New Hampshire)
2008	91.0 ± 4.2%	47	93.5 ± 0.7%	98.1 ± 1.6% (Connecticut)
2009	92.9 ± 4.1%	24	92.4 ± 0.7%	98.8 ± 1.5% (Rhode Island)
2010	89.9 ± 3.8%	40	91.8 ± 1.5%	98.3 ± 1.5% (North Dakota)
2011	91.2 ± 3.5%	26	91.1 ± 0.7%	97.1 ± 1.7% (Louisiana)
2012	90.4 ± 3.9%	24	89.7 ± 0.9%	96.3 ± 3.0% (Georgia)
2013	89.8 ± 6.1%	33	90.8 ± 1.0%	96.7 ± 2.3% (Rhode Island)
2014	92.7 ± 5.1%	20	91.6 ± 0.9%	97.6 ± 1.8% (Louisiana)
2015	92.4 ± 3.9%	28	92.6 ± 0.7%	97.3 ± 2.3% (Connecticut)
2016	92.0 ± 4.5%	25	90.5 ± 1.1%	97.4 ± 1.9% (Iowa)
2017	92.1 ± 3.7%	24	91.4 ± 0.9%	97.7 ± 1.6% (North Dakota)

Data compiled by the ALC from National Immunization Surveys, 1995-2017¹,
<https://www.cdc.gov/vaccines/imz-managers/coverage/childvaxview/data-reports/hepb/index.html>

GRAPH:

Percentage of Children 19-35 Months of Age Receiving 3 or More Doses of Hepatitis B Vaccine



Data compiled by the ALC from National Immunization Surveys, 1995-2017¹

<https://www.cdc.gov/vaccines/imz-managers/coverage/childvaxview/data-reports/hepb/index.html>

HEPATITIS B BIRTH DOSE VACCINATION COVERAGE

1 or more dose among infants within 3 days of birth

	Percentage of infants receiving			Rank among other states according to		
	1 dose within 1 day of birth*	1 dose within 2 days of birth	1 dose within 3 days of birth*	1 dose within 1 day of birth	1 dose within 2 days of birth	1 dose within 3 days of birth
2003		49.4 ± 6.3%		N/A	25	N/A
2004		61.4 ± 6.5%		N/A	20	N/A
2005		59.4 ± 7.2%		N/A	17	N/A
2006	59.1 ± 7.4%	68.2 ± 7.2%	69.1 ± 7.2%	11	9	12
2007	54.4 ± 7.4%	67.1 ± 6.9%	68.6 ± 6.9%	20	12	14
2008	55.1 ± 6.2%	66.0 ± 5.9%	66.5 ± 5.8%	20	12	19
2009	60.6 ± 7.2%	67.1 ± 7.0%	68.1 ± 7.0%	16	16	18
2010	59.2 ± 6.1%	68.8 ± 5.6%	70.7 ± 5.5%	26	17	17
2011	68.1 ± 6.4%	74.6 ± 5.8%	75.3 ± 5.8%	16	14	14
2012	77.7 ± 5.5%	81.7 ± 5.2%	83.8 ± 4.9%	2	4	2
2013	75.0 ± 1.5%	80.4 ± 7.2%	81.7 ± 7.1%	6	7	9
2014	81.7 ± 6.9%	86.1 ± 6.1%	87.2 ± 6.0%	1	2	2
2015	78.6 ± 5.8%	82.7 ± 5.5%	83.2 ± 5.4%	3	2	3
2016	83.4 ± 5.7%	87.6 ± 5.2%	88.7 ± 5.1%	1	1	1
2017	72.3 ± 6.6%	76.7 ± 6.4%	77.6 ± 6.3%	16	16	19

*No data available 2003-2005

2017 U.S. NATIONAL AVERAGE

Day 1: 65.7 ± 1.6%

Day 2: 72.0 ± 1.6%

Day 3: 73.6 ± 1.6%

2017 HIGHEST BIRTH DOSE COVERAGE

Day 1: 82.0 ± 5.7% (Kentucky)

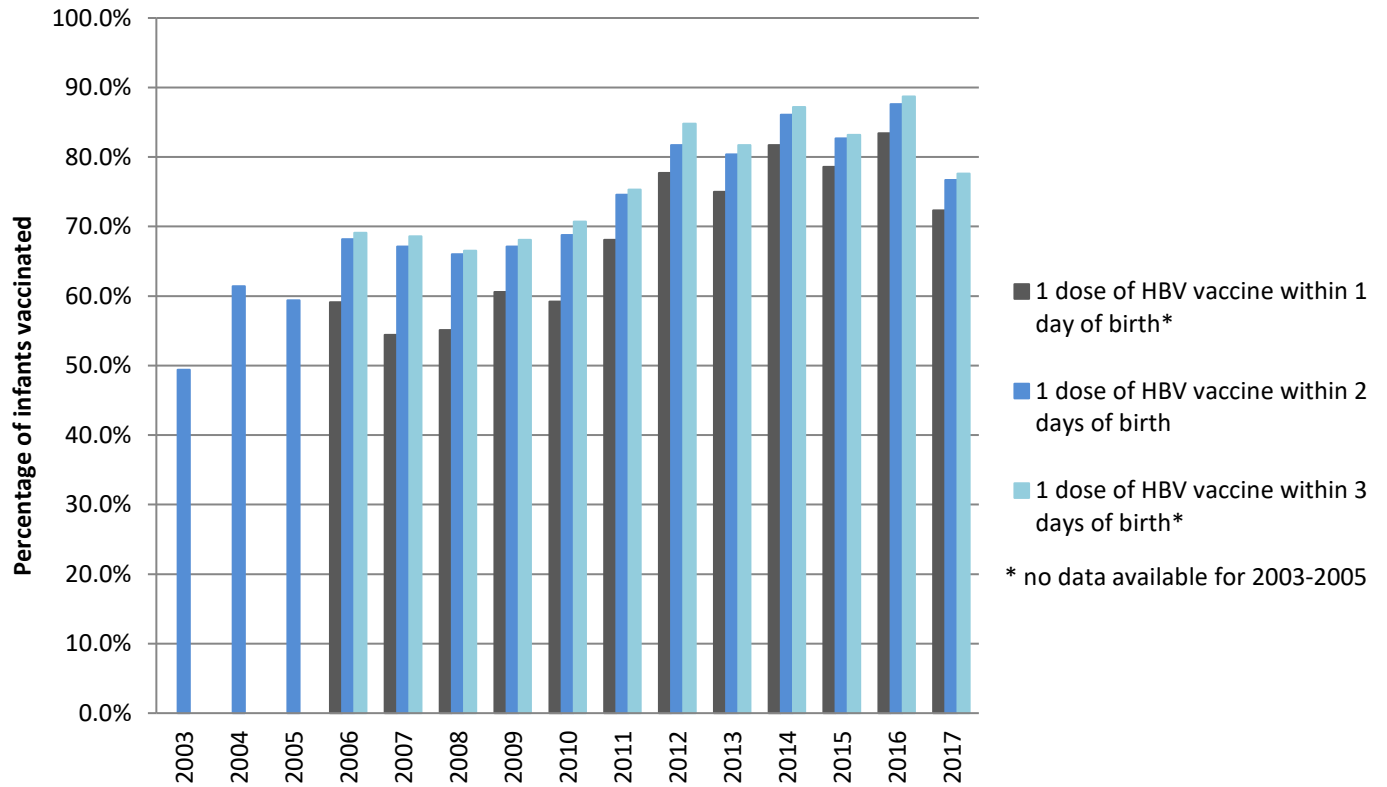
Day 2: 84.1 ± 5.6% (Kentucky)

Day 3: 84.1 ± 5.6% (Kentucky)

Data compiled by the ALC from National Immunization Surveys, 1995-2017¹,
<https://www.cdc.gov/vaccines/imz-managers/coverage/childvaxview/data-reports/hepb/index.html>

GRAPH:

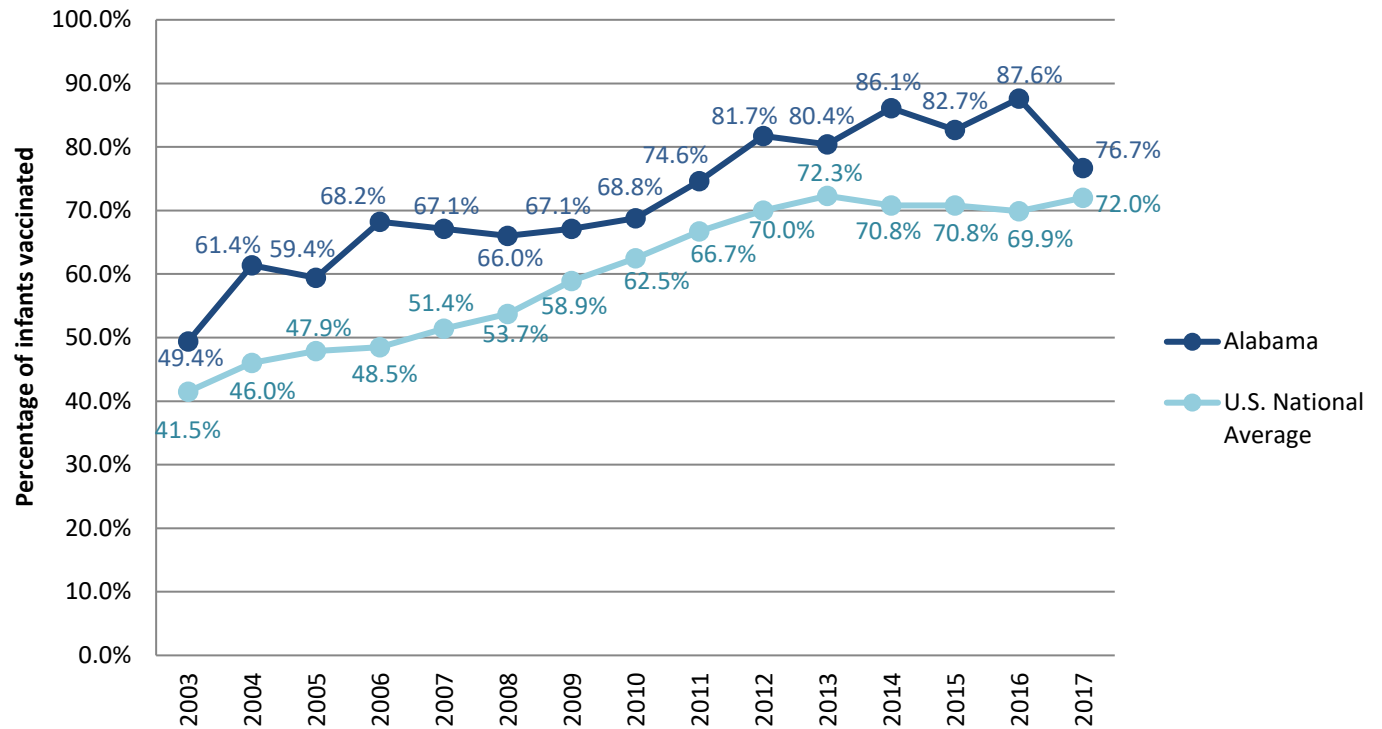
Estimated Vaccination Coverage for Hepatitis B Vaccine among Children from Birth to 3 Days of Age in Alabama



Data compiled by the ALC from National Immunization Surveys, 1995-2017¹,
<https://www.cdc.gov/vaccines/imz-managers/coverage/childvaxview/data-reports/hepb/index.html>

GRAPH:

Percentage of Infants Receiving 1 Dose of Hepatitis B Vaccine within 2 Days of Birth



Data compiled by the ALC from National Immunization Surveys, 1995-2017¹,
<https://www.cdc.gov/vaccines/imz-managers/coverage/childvaxview/data-reports/hepb/index.html>

¹ The data from the National Immunization Surveys constitute a composite of data from children who were 19-35 months of age at the time of the survey. Therefore, the data might reflect a different estimate from the states' own birth cohort data.