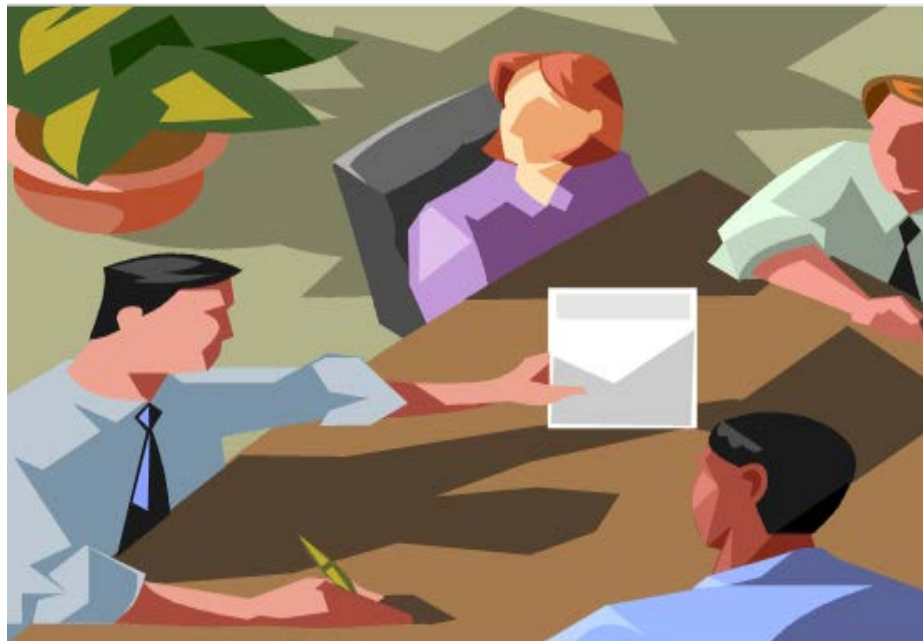


Program Director Education Meeting

January 9, 2020



Agenda

- ▶ CLER – THANK YOU ALL!!
- ▶ Medical License CA
- ▶ MedHub Prepopulated Hours
- ▶ Program Director Retreat
- ▶ Milestone Reporting
- ▶ ACGME Surveys
- ▶ Coordinator's Travel Fund
- ▶ GME House Staff Survey

► **THANK YOU** for all your help!



New California Physician License Requirements

- ▶ Senate Bill 798 effective **1/1/2020**
- ▶ MD applicants must complete **3 years of ACGME** before obtaining a full unrestricted license
- ▶ US or international medical school graduates
- ▶ Training must include 4 months of general medicine (pediatrics, Ob/Gyn, family medicine, etc.)
- ▶ Must complete 24 consecutive months of training in the same program

2020 Changes to CA MD Licensing

- ▶ All residents must obtain a Postgraduate Training License (PTL) to participate in ACGME training in CA
- ▶ Must be obtained within 180 days after enrollment in the program
- ▶ Does not need renewal
- ▶ For unlicensed residents currently in Ca programs-must have the PTL by June 30, 2020.

What medical schools are acceptable?

- ▶ To be eligible for licensure in California, you must have received all of your medical school education from and graduated from a:
 - U.S. or Canadian medical school accredited by the Liaison Committee for Medical Education (LCME), the Committee on Accreditation of Canadian Medical Schools; or
 - The foreign medical school which has been evaluated by the Educational Commission for Foreign Medical Graduates (ECFMG), the foreign medical school is listed on the World Federation for Medical Education (WFME), the Foundation for Advancement of International Medical Education and Research (FAIMER) World Directory of Medical Schools joint directory, or the World Directory of Medical Schools; or
 - A foreign medical school that has been approved by the Medical Board of California (Board).

Cost of the Training License

- ▶ There are two fees involved in the licensing process. The first fee is the application fee, which is **\$491** and includes the \$49 non-refundable fingerprint processing fee.



Postgraduate Training License (PTL) Checklist

► Can apply on line

- PTL1-5 application-all 5 pages (can be completed on line: <https://www.mbc.ca.gov/Forms/>)
- Have application notarized (GME has free notary service)
- Application fee which includes the fingerprinting fee (can be paid on line but be sure to obtain a receipt)
- Live Scan fingerprinting form or cards (from the MBC website). Must be mailed to MBC
- USMLE (or Canadian LMCC) scores. (Parts 1 and 2)
- ECFMG Certification status (IMGs only)
- Certificate of Medical Education (Form Med-sent directly from the Medical School)
- Official Medical School Transcript (sent directly from the Medical School)
- Certified Medical School Diploma (sent directly from the Medical School)
- Certification of any previous ACGME training (Form PTA-PTB) (example internship from out of CA)
- Postgraduate Training License Enrollment Form (Form EF) (sent directly from the program to MBC)

Postgraduate Training License (PTL) Checklist cont'd

- ▶ Timeline of activities (Form TOA) –if applicant graduated from medical school more than 6 months prior
- ▶ Explanation of Application Question (Form EXP) –used to provide detailed explanations of any questions on the application
- ▶ License verification-official verification of any MD licenses. Sent directly from the licensing agencies to MBC. Verification of other training licenses is NOT required.

Program Requirements

- ▶ MBC must be notified within 30 days of the following (FormPSU1-PSU2):
 - Transfers to other CA residencies
 - Terminations
 - Resignations
 - Leaves of absence

Process

- ▶ Incoming interns and residents who have not completed 3 years of ACGME training must – as soon as they receive a contract from SHC
 - Apply for the PTL on line (<https://www.mbc.ca.gov/Forms/>)
 - Have the application notarized (GME will do this for free but does not reimburse for outside notaries)
 - Download the LiveScan fingerprint forms or cards. Complete and mail to MBC.
 - Keep receipts for MBC application, fingerprinting fee, and Notary services.
 - GME will reimburse after the start of internship/residency after receipts are presented.

- ▶ **PTL must be received within 180 of start of ACGME training.**

MedHub Prepopulated Hours

- ▶ GME will remove the feature of “prepopulate work hours” from program’s page starting Jan 11 (Saturday).
- ▶ All trainees will must log work hours.

Program Director Retreat

- ▶ January 27th (Monday) 8am – 12 pm at Assembly Hall in 500P
- ▶ Speakers:
 - Kelly Skeff, MD PhD (Professor in Medicine)
 - Nicole Ofiesh, PhD (Executive Director of Stanford Schwab Learning Center)
- ▶ Theme: Diversity of Learning in Graduate Medical Education

Milestone Reporting

- ▶ CCC and semi-evaluation should be completed by now
- ▶ Report milestone ratings of all trainees to ACGME by **Jan 10**.

ACGME Surveys

► 3 cohorts:

— 1/13-2/16

Adult cardiothoracic anesthesiology	Maternal-fetal medicine
Allergy and immunology	Medical biochemical genetics
Anesthesiology	Medical genetics and genomics
Child neurology	Molecular genetic pathology (multidisciplinary)
Clinical neurophysiology	Neurology
Critical care medicine (Anesthesiology)	Neuromuscular medicine (Neurology)
Dermatology	Neurotology
Dermatopathology (multidisciplinary)	Obstetric anesthesiology
Emergency medical services	Obstetrics and gynecology
Emergency medicine	Otolaryngology - Head and Neck Surgery
Epilepsy	Pediatric anesthesiology
Epilepsy	Pediatric emergency medicine (Emergency medicine)
Family medicine	Pediatric otolaryngology
Gynecologic oncology	Plastic Surgery - Integrated
Hand surgery (Plastic surgery)	Regional anesthesiology and acute pain medicine
Hospice and palliative medicine (multidisciplinary)	Reproductive endocrinology and infertility
Interventional radiology - integrated	Sports medicine (Family medicine)
	Vascular neurology

— 2/10-3/15

— 3/9-4/12

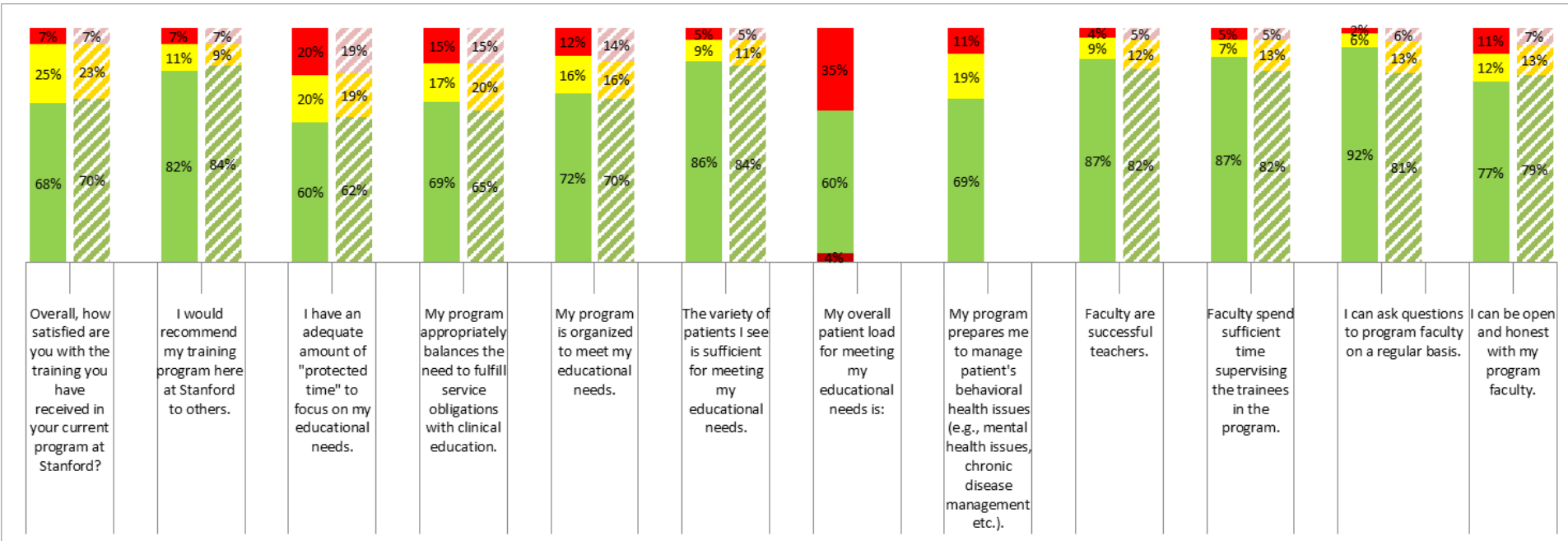
Coordinator's Travel Fund for ACGME Conference

- ▶ Call for applications for the 2020 Stanford GME Coordinator's Travel Fund for the ACGME Conference
- ▶ One funding recipient, \$1500
- ▶ Eligibility:
 - Must be able to attend the ACGME Conference in San Diego, CA Feb 27-29
 - Has been a program coordinator for a residency or a fellowship program for at least 2 years
 - Has never attended the ACGME conference
 - Willing to share what was learned to the group by giving a 15-minute presentation at the March 12th Coordinator Meeting

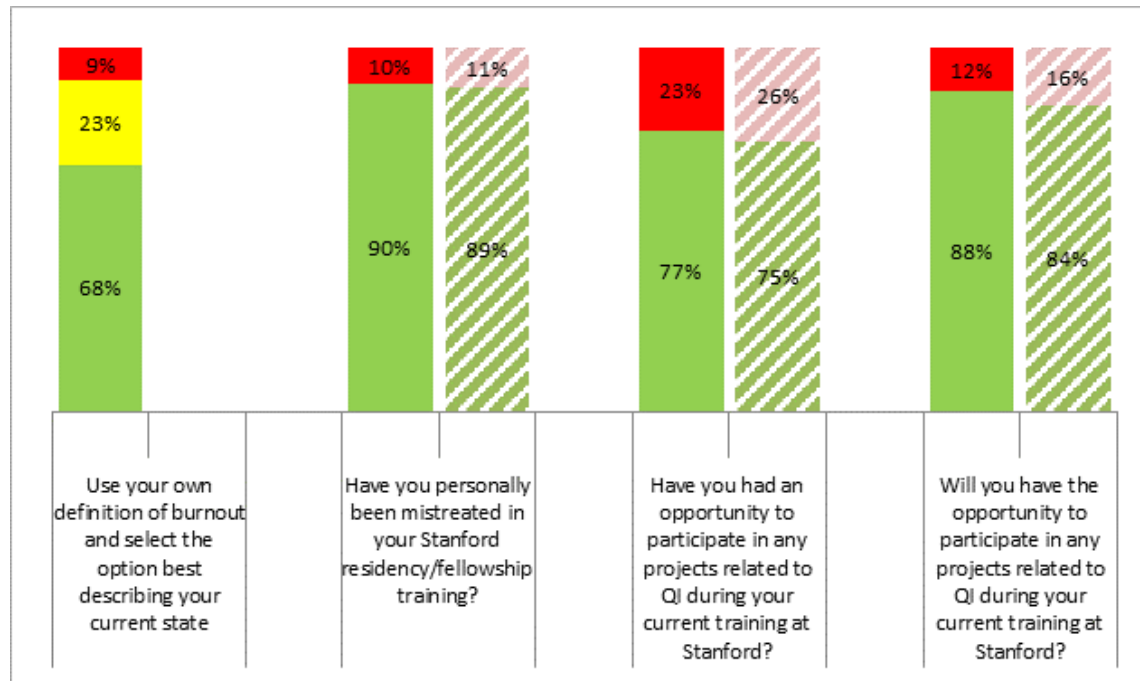
GME House Staff Survey

- ▶ Oct 24 – Dec 2
- ▶ 674 out of 1410 responded (48%)
- ▶ Reports generated for 41 programs
 - Sent to Program Directors and Program Coordinators
 - Uploaded in MedHub → Program Accreditation → APE → under “File Attachments”
- ▶ Poster of the institutional report was presented at the December’s house staff breakfast session and is displayed in GME lounge

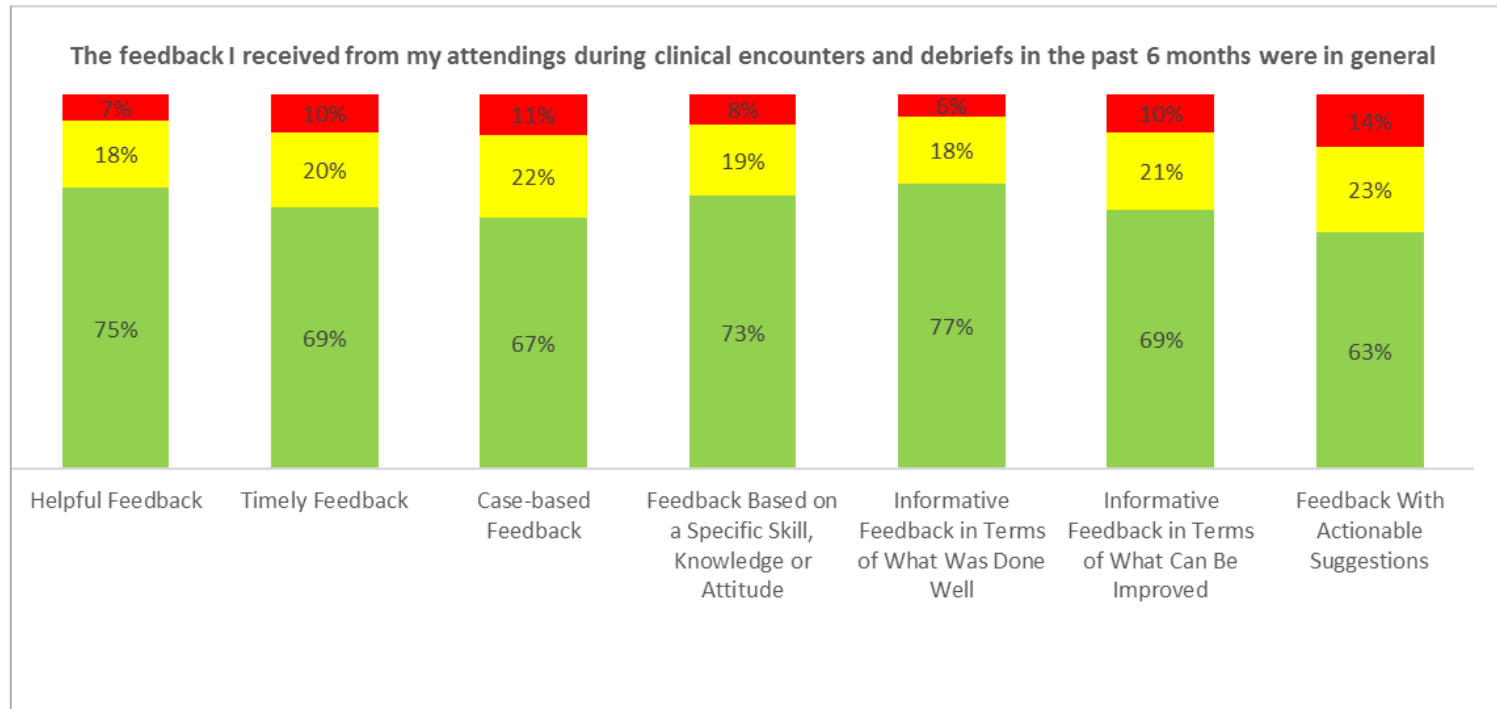
Institutional Report: Education 1



Institutional Report: Education 2



Institutional Report: Feedback



Institutional Report: Mentorship



GME House Staff Survey – Next Step

- ▶ An early warning system
- ▶ Share with your trainees
- ▶ Identify weak areas and generate an improvement plan ... and get ready for the ACGME Surveys

Questions?



Program Director Orientation

▶ Current Format:

- Three 1-hour consecutive sessions on 3 days
- Video recorded

▶ Problems:

- Very low attendance
- Overwhelming

▶ Alternatives:

- Online learning modules?
- An (or two) session(s) with focuses on resources and timelines?
- Individual orientation?
- Get oriented along the way?
- Other ideas?