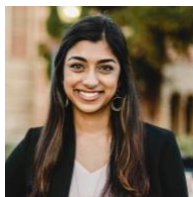


## Stanford University's MS in Human Genetics and Genetic Counseling Class of 2021



**Nivedita (Nivi) Ahlawat** is from San Jose, California and graduated from the University of California, Los Angeles in 2019 with a bachelor's degree in Neuroscience and minor in Cognitive Science. As an undergraduate, she conducted research on neurodegenerative diseases and wrote her senior thesis on variant interpretation. She also peer counseled undergraduate students with anxiety and depression, utilizing cognitive behavioral therapy. As a director of the CPR and First Aid Program at UCLA, she expanded the organization's outreach by designing health, nutrition, and wellness workshops for underserved communities in the greater Los Angeles area. She gained valuable exposure to genetic counseling as a volunteer at the Stanford Center for Inherited Cardiovascular Disease and as a member of UCLA's Genetic Counseling Student Interest Group. In her free time, Nivi enjoys stand-up comedy, skiing at Lake Tahoe, wildlife photography, and Italian food.



**Daniela Diaz Caro** is from Trujillo, Peru and graduated from the University of Washington in 2017 with a bachelor's degree in Molecular, Cellular, and Developmental Biology. As an undergraduate, she was a teaching assistant for Molecular Biology and Genetics courses and conducted cancer research at Fred Hutchinson Cancer Research Center. After graduation, Daniela worked as a Laboratory Genetic Counseling Assistant at Seattle Children's Hospital assisting with the preauthorization of genetic tests. There she had the opportunity to shadow genetic counselors in the biochemical genetics, pediatric genetics, and craniofacial genetics specialty clinics. Daniela also volunteered as a crisis line phone worker for the Seattle King County area and taught science courses for Spanish speaking GED adult students. In her free time, Daniela enjoys painting, sand-boarding at the Oregon dunes, and playing with her pet bunny named Chichi.



**Braeden Ego** is from the San Francisco Bay Area and received her bachelor's degree in Molecular and Cell Biology from the University of California, Berkeley in 2016. As an undergraduate, she served as a student instructor for an introductory biology lab course, a mentor for MCB genetics students, and a research assistant at Lawrence Berkeley National Laboratory studying epigenetic effectors involved with aging. Following graduation, Braeden was involved with research at Genentech and Stanford University where she studied immunotherapeutics for macular degeneration and the applications of genome-wide CRISPR-Cas9 screening technologies. During this time, Braeden was also involved with volunteer work at the Down Syndrome Connection of the Bay Area, Crisis Text Line, and Rare Genomics Institute. To gain more hands-on exposure to genetic counseling, Braeden volunteered with genetic counselors at the Stanford Center for Inherited Cardiovascular Disease and the Stanford Undiagnosed Disease Network. During her spare time, Braeden enjoys trying out new boba shops and hotpot restaurants, listening to podcasts, watching forensics/crime shows, and going on hikes throughout the Bay Area.



**Kathryn (Kate) Elliott** is from San Carlos, California and graduated from the University of California, Los Angeles in 2018 with a bachelor's degree in Human Biology and Society. As an undergraduate, she conducted research in molecular biology and biological anthropology laboratories. In addition, Kate mentored and taught public health through the UCLA T.E.A.C.H. program, and served as the community relations director for the UCLA Pediatric AIDS Coalition. She gained exposure to the field of genetic counseling as a medical genetics-oncology intern at the Cedars-Sinai Medical Center and as a member of the UCLA Genetic Counseling Student Interest Group. After graduating, Kate continued to conduct research at UCLA as Staff Research Associate in a human genetics laboratory studying biological mechanisms underlying rare mendelian diseases. In addition to being a student, Kate is an avid Bay Area sports fan, an amateur watercolor-er, and a great British baking show enthusiast.



**Gabriella (Gaby) Lee** is from the Bay Area and received her bachelor's degree in Genetics and Genomics with a minor in Human Development from UC Davis in 2015. After graduating, she moved to southern California to work at the City of Hope in a lab that studies pathways that lead to chromosomal rearrangements in cancer. While there, she was also a genetic counseling intern at Providence Hospital in a cancer clinic. She then moved back to the Bay Area and has been working at Color Genomics as part of the insurance team. She's been a volunteer with Crisis Text Line, Exhale and Vitas Healthcare. She enjoys cooking, gardening and befriending neighborhood cats.



**Hannah Llorin** is from Baltimore, Maryland and graduated from Stanford University in 2019 with a bachelor's degree in Human Biology with a self-designed concentration in Genetic Counseling. As an undergraduate, Hannah conducted research on the genetic factors of glial cell development and interned at a public health nonprofit while studying abroad in Cape Town, South Africa. She gained counseling experience by serving as a sexual health counselor, resident assistant, and peer health educator for undergraduate students. Most recently, Hannah volunteered with genetic counselors at the Stanford Center for Inherited Cardiovascular Disease and the Stanford Center for Undiagnosed Diseases. Her research project explores how tumor genomic testing can reveal hereditary

cancer risk. As a member of the LGBTQ+ community, she is passionate about improving inclusivity in genetic counseling for gender and sexual minority people. In her spare time, she enjoys running, listening to podcasts, and being near the ocean.



**Kathleen Murphy** is originally from Cleveland, Ohio. She graduated from the University of Oxford with a degree in molecular and cellular biochemistry in 2011 where she did a Master's thesis in the Department of Molecular Biophysics. Kathleen comes to genetic counseling from the biotechnology sector, where she was most recently part of the market research team at Illumina. Before joining Illumina, Kathleen was a Program Analyst with the Harrington Discovery Institute, a nonprofit focused on transitioning early-stage drug development research into the clinic. In her free time, Kathleen loves to play tennis and video chat with (and talk about) her adorable twin nieces.



**Miles Picus** is originally from Singapore, and his family now resides in Carmel, California. Miles graduated from UCLA in 2018 with a bachelor's degree in Human Biology and Society. As an undergrad, he spent time in a cancer biology lab, and also did research at the UCLA center for social medicine, working on a project to evaluate and improve a branch of the mental health system in LA. Miles initially gained experience in genetic counseling through shadowing a cancer genetic counselor at Providence St. Joseph's in LA. In the clinic, he also worked on various projects and was named co-author on a publication studying the demographics of access to genetic counseling. He then went on to work on two GC-related research projects, while shadowing the lead GC of those projects, at the Cedars-Sinai Medical Center. Outside of GC-related interests, Miles worked as a behavioral therapist for children with Autism Spectrum disorder. Miles balances his academic and career interests through attending Stanford athletic events, surfing, and yoga.



**Jennifer Siranosian** is from Cape Cod, Massachusetts and graduated from Wesleyan University in 2017 with a bachelor's degree in biology and archaeology. As an undergraduate, Jennifer worked as a research assistant in an evolutionary genetics lab and excavated archaeological sites in Kenya and France inspiring a senior thesis on paleopathology. After graduation, she researched spinal muscular atrophy and other neuromuscular disorders as a lab technician at Massachusetts General Hospital. Jennifer gained genetic counseling experience by assisting in targeted SMA carrier screening throughout the US and through shadowing opportunities at MGH. She also volunteered as a one-on-one mentor and tutor for recently immigrated high school students in the Boston area. Now that she lives in sunny California, Jennifer enjoys spending extra time outdoors and learning about the West Coast's bird species, as well as baking new recipes for friends and colleagues.



**Caroline Stanclift** is from Camden, Maine and graduated from Wheaton College (MA) in 2016 with a bachelor's degree in Biochemistry. As an undergraduate, she joined a lab focused on zebrafish genetics. Upon graduation, she was a Science Teaching Fellow at Culver Academies in Indiana. Following her fellowship, she worked as a Research Associate at The Broad Institute of MIT and Harvard, studying how disease alters protein interaction networks. During her time in Boston, she also interned with the genetic counseling team in Cancer Genetics and Prevention at Beth Israel Deaconess Medical Center, volunteered with the national suicide prevention hotline, and became involved with advocacy for the ALS Association. In her free time, you'll likely find her outside in some sunshine hiking or skiing.



**Monty Worthington** is from Anchorage Alaska and received his bachelor's degree in physics from Tulane University. Pivoting from a career in the renewable energy field — that focused on providing energy solutions to remote, underserved populations — in 2018 he founded The Suz Fund, a nonprofit that works to provide support to cancer patients and survivors in Alaska, with an emphasis on providing assistance to individuals diagnosed with early onset cancers. He gained experience in the genetic counseling field and inspiration to pursue this vocation shadowing genetic counselors at the Providence Cancer Center and Providence Children's Hospital in Anchorage. Growing up in Alaska instilled a deep appreciation for the outdoors early on, and he continues to enjoy spending his free time exploring outside whether it be on foot, on skis, in a packraft, or under a paraglider.