



**STANFORD
MATERNAL & CHILD HEALTH
RESEARCH INSTITUTE**

[View this email in your browser](#)

October 2022 MCHRI Newsletter

News & Notables

Don't miss the 5th annual MCHRI Symposium on October 20!

Please join in-person for this annual event focused on today's pressing topics in maternal and child health. This research symposium brings together faculty, trainees, students, and postdocs from Stanford and beyond to explore the latest developments and innovations. This year's keynote speakers will highlight Community-Engaged Research, with opportunities to hear from community partners, and afternoon sessions featuring Rising Scientists and neurodevelopment.



[Register now!](#)



MCHRI EUREKA 2023: Apply Now!

Applications due: Rolling acceptances through December 9, 2022

MCHRI is recruiting for the second annual **Eureka Certificate Course in Translational Medicine**. This 5-day intensive course will be held at Asilomar Conference Center in Monterey, CA, from **Sunday, February 26, to Thursday, March 2, 2023**. This course is designed to bring early career faculty together with mentors and resources to foster a community focused on promoting new innovations in maternal child health.

[More information](#)

Funding Opportunities

For more information about MCHRI programs and deadlines, visit the [Funding Calendar](#) page

For more eligibility information and other details, visit individual funding opportunity pages.

[Uyengsu-Hamilton 22q11 Neuropsychiatry Research Program](#)

Application Deadline: October 17, 2022

[Stanford Medicine Center for Improvement \(SMCI\) Lillie and Donnelly Seed Grant Program](#)

Application Deadline: November 7, 2022

[Interprofessional Clinician Program Award](#)

Application Deadline: December 2, 2022

MCHRI Education and Seminars

INVESTIGATOR-INITIATED STUDIES

WEDNESDAY NOVEMBER 2, 2022 | 12-1PM PST

[UPCOMING] Investigator-Initiated Studies*Wednesday, November 2, 2022 at 12:00-1:00PM*

Join this MCHRI Seminar to learn how to get involved with Investigator-Initiated Studies (IIS), with insight from industry leaders and faculty at Stanford that have extensive IIS experience, and resources for how to embark on your own IIS.

Speakers:**Ha Tran, MD, MS**, Executive Medical Director at Astella Pharma**Greg Enns, MD**, Professor, Pediatrics-Genetics, Stanford University[Register Here](#)**Leveraging PEDSnet**

MONDAY, NOVEMBER 7, 2022 | 12-1PM PST

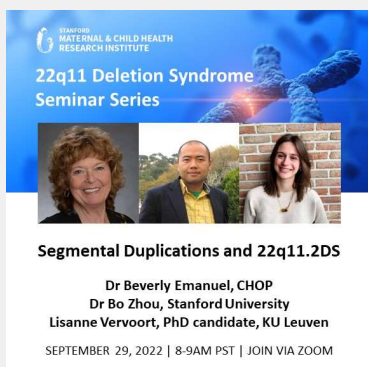
[UPCOMING] PEDSNet*Monday, November 7, 2022 at 12:00-1:00PM*

PEDSnet is a multi-site network that utilizes a common data model to enable a Pediatric Learning Health System that leverages a common governance structure, administrative efficiencies, and logistical, scientific and training resources. Gain insight on how to leverage this powerful tool for your research.

Speakers:**Grace Lee, MD, MPH**, PEDSnet Site Principal Investigator, Professor, Pediatrics (Infectious Diseases)**Keith Morse, MD, MBA**, PEDSnet Co-Site Principal Investigator/Informatics Lead, Clinical Assistant Professor, Pediatrics**Yair Bennett, MD**, Instructor, Pediatrics[Register Here](#)**HIGHLIGHTING THE
CENTER FOR ASIAN HEALTH
RESEARCH AND EDUCATION (CARE)**

MONDAY SEPTEMBER 12, 2022 | 12-1PM PST

[Recording] Highlighting the Center for Asian Health and Education (CARE)**Speakers:****Zackary Sellers, MD, PhD**, Assistant Professor of Pediatrics**Malathi Srinivasan, MD**, Clinical Professor - Medicine, Associate Director of Stanford CARE[View Recording Here](#)



[Recording] Segmental Duplications and 22q11.2DS

This Stanford 22q11 Deletion Syndrome Seminar focuses on emerging research in segmental duplications and 22q11.2DS, and features three speakers: Dr. Beverly Emanuel, Dr. Bo Zhou, and Lisanne Vervoort, PhD candidate.

[View Recording Here](#)

Recordings Available! [Check our YouTube page for past recordings.](#)

How Can MCHRI Help Your Research?

I want help from **experienced** maternal and pediatric focused **research coordinators** -

[Check our MCHRI's Clinical Research Coordinator Services!](#)

I want help with my **research study** at Stanford Children's Health -

[Check out the Clinical Research Support Office!](#)

I want help with **biostatistics and data management** support for maternal and child health research

[Check out MCHRI's partner, the Quantitative Sciences Unit \(QSU\)!](#)

I want help **finding funding** for my maternal or child health **research**

[Check out MCHRI's Funding Opportunities!](#)



Website



Twitter



YouTube



Email

Join MCHRI Community

Join Our Mailing List

Copyright © 2022 Stanford Maternal & Child Health Research Institute, All rights reserved.

[unsubscribe from this list](#) [update subscription preferences](#)



