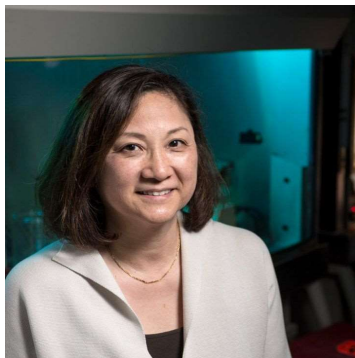


## Asian American Pacific Islander (AAPI) Heritage Month



### Spotlighting Kathleen Sakamoto, MD

An MCHRI member since 2013, Kathleen Sakamoto, MD, Professor of Pediatrics (Hematology & Oncology) has been an outstanding advocate for maternal and child health research. The first in her family to graduate from college, she has received numerous MCHRI grants including Transdisciplinary Initiatives Program and Pilot Grants. Sakamoto has served many years both as Panel Chair on the MCHRI Postdoctoral Support program, and previously on the MCHRI Executive Committee. Several postdoctoral fellows in her lab have also received MCHRI fellowship grants.

In 2022, Sakamoto was an NIH R25 grantee, for the project title "Increasing Diversity in Hematology: Training for Underrepresented Students", establishing a new underrepresented minority internship program alongside Bonnie Halpern-Felsher, PhD. Earlier, in 2014, Sakamoto also received an NIH T32 grant, for her project "Training in Pediatric Nonmalignant Hematology and Stem Cell Biology." She works tirelessly to create opportunities for our trainees.

## News & Notables

### Challenges and Opportunities for Fetal Pediatric Device Development



**\*\*\*IN PERSON AND ONLINE\*\*\***  
**MONDAY, MAY 22, 2023 | 12-1PM**  
**AT THE RED OAK ROOM IN CAM**

### MCHRI Seminar Series:

#### **Challenges and opportunities for fetal and pediatric device development**

*Monday, May 22, 2023 at 12:00-1:00PM*

*Hybrid: Red Oak Room in CAM or Virtual via Zoom*

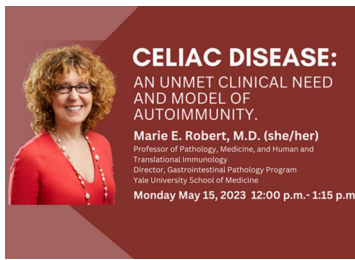
Join this MCHRI seminar to learn about Impact1, the Stanford Biodesign program targeted at advancing pediatric, fetal, and maternal health technology to impact lives from day one. We will explore the unique attributes of fetal and pediatric device development, share the recent development of a novel fetal bladder shunt for the treatment of fetal lower urinary tract obstruction, and highlight Stanford resources you can use for your own translational pursuit.

#### Speakers:

Yair Blumenfeld, MD, Professor of Obstetrics and Gynecology (Maternal Fetal Medicine)

Kunj Sheth, MD, Assistant Professor of Urology

[Register here](#)



## Celiac Disease: An Unmet Clinical Need and Model of Autoimmunity

Monday, May 15, 2023 at 12:00-1:15PM

Hybrid: LKSC or Virtual via Zoom

Stanford Medicine Children's Health Center for IBD and Celiac Disease is co-hosting a talk with Marie Robert, MD on Celiac Disease. Dr. Robert established the Yale Celiac Disease Translational Research Group, and her current research includes inflammatory signatures at diagnosis and remission and establishing histologic endpoints for clinical trials.

[Register to join in person at LKSC](#)

[Register to join virtually via Zoom](#)



## Stanford Medicine Health Matters

Saturday, May 20, 2023

In Person and Online

Health Matters—Stanford Medicine's free community event—explores the latest advances in medicine, health, and wellness. Stanford Medicine will welcoming our community to the medical school campus, where our world-renowned experts will present the latest research and practical tips for healthy living. MCHRI's [Office of Community Engaged Research](#) will be in attendance to connect with our community.

[Learn more and register](#)



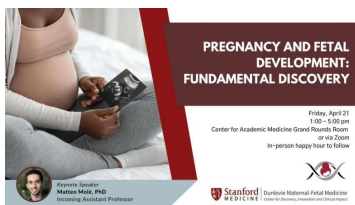
## Summer Scamper Registration

Sunday, June 25, 2023

In Person and Online

Summer Scamper is more than just a fun race—it's also Lucile Packard Children's Hospital Stanford's biggest community fundraiser of the year. Once again this year, you can choose to scamper in person or virtually, from anywhere, with a 5k and kids' fun run! Please register today. Your support makes a difference for patients and their families who need your help.

[Learn more and register](#)



## Dunlevie Maternal-Fetal Medicine 2023 Symposium Recordings

The Symposium, Pregnancy and Fetal Development: Fundamental Discovery, was held on April 21, with the goal to promote innovative collaborations and stimulate discoveries that will advance the science of maternal-fetal medicine. Bringing together basic and translational scientists across the Stanford campus this event focused on sharing discoveries related to human pregnancy and fetal development.

[View recordings here](#)



## Stanford Medicine Continues Participation in the Neonatal Research Network

The Neonatal Research Network (NRN) conducts multi-center clinical trials designed to improve healthcare and outcomes for newborns, with Stanford being 1 of 15 centers across the country awarded this prestigious grant. Stanford has secured funding to continue to participate in the NRN through 2030. David Stevenson, MD, MCHRI Co-Director, was the inaugural Stanford PI in 1991 and the current PI,

Krista Van Meurs, MD took over for him in 2006.

[Learn more](#)

## MCHRI VISIONARY LEADERSHIP AWARD

### NOMINATIONS

#### Visionary Leadership Award Nominations

The annual MCHRI Visionary Leadership Award is a lifetime achievement award that spotlights individuals within the Stanford maternal and child health research community who have made long-lasting and impactful contributions. This will be our 5th annual award given at the MCHRI Symposium to one or more recipients in recognition of their extraordinary leadership, vision, contribution to maternal child health research over their career. Individuals who are currently in MCHRI leadership positions are not eligible.

Past recipients included:

2019: Hugh O'Brodovich, Phil Pizzo, Chris Dawes

2020: Fernando Mendoza

2021: Bonnie Maldonado

2022: Christy Sandborg

Please send nominations via this link by July 7, 2023 including a short nomination description of why the individual(s) deserve this award.

[Submit your nomination](#)

## MCHRI Clinical Research Coordinator Corner

Swathi Alagandula, MCHRI Assistant CRC, is supporting a study which investigates outcomes between *automatically scheduled follow-up visits* vs. *guardian-led PRN (as needed) follow-up visits* in children recovering from common conditions such as pneumonia, skin/soft tissue infections, or UTIs, in a post-hospitalization setting. Swathi is championing this study by partnering with hospitalists at SMCH and at Packard El Camino (PEC), and having the patient's care team introduce the study which has shown to increase the likelihood of participation.



[Learn more about the Clinical Research Coordinator Services here](#)

## Funding Opportunities

For more information about MCHRI programs and deadlines, visit the [Funding Opportunities](#) page  
For more eligibility information and other details, visit individual funding opportunity pages.

[MCHRI Instructor K Support](#)

**Application Deadline:** May 15, 2023

[MCHRI Bridge Support](#)

**Application Deadline:** May 15, 2023

[Innovative Medicine Accelerator: Small Molecule Drug Prototyping](#)

**Application Deadline:** June 5, 2023

For more eligibility information and other details, visit individual funding opportunity pages.

## MCHRI Seminar Series Recordings



#### MCHRI Seminar Series:

##### Biodesign Faculty Fellows: Designing Innovations to Improve Health and Health Care

MCHRI annually sponsor Stanford Byers Center for Biodesign Faculty Fellowships to spur innovations in maternal and child health, offering faculty the opportunity to apply their knowledge to advance care delivered through Stanford Medicine Children's Health.

[View recording.](#)

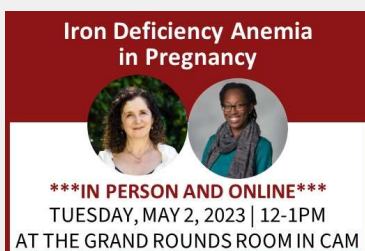


#### MCHRI Seminar Series:

##### Using Digital Imaging for Monitoring Skin Disease

With technological advances researchers are now using patient sourced data-wound photos from a mobile app to conduct the largest natural history study of Epidermolysis Bullosa skin wounds over time, exploring the power of home-monitoring. Researchers are also evaluating the current state of AI in dermatology, discussing the pitfalls of representation and bias of AI in dermatology and how to develop fair algorithms for real-time AI clinical trials.

[View recording.](#)



#### MCHRI Seminar Series:

##### Iron Deficiency Anemia in Pregnancy

Maternal morbidity has many causes and is on the rise. Join this seminar to learn how iron deficiency anemia in pregnancy contributes to maternal and neonatal morbidity, its importance as a clinical and research target, and innovative, patient-informed approached toward its evaluation and treatment.

[View recording](#)

### How Can MCHRI Help Your Research?

FUNDING  
OPPORTUNITIES



CLINICAL RESEARCH  
SUPPORT OFFICE



QUANTITATIVE  
SCIENCES UNIT (QSU)



CLINICAL RESEARCH  
COORDINATORS

OFFICE OF  
COMMUNITY-  
ENGAGED RESEARCH





Website



Twitter



YouTube



Email

**Join MCHRI Community**

**Join Our Mailing List**

*Copyright © 2023 Stanford Maternal & Child Health Research Institute, All rights reserved.*

[unsubscribe from this list](#) [update subscription preferences](#)

