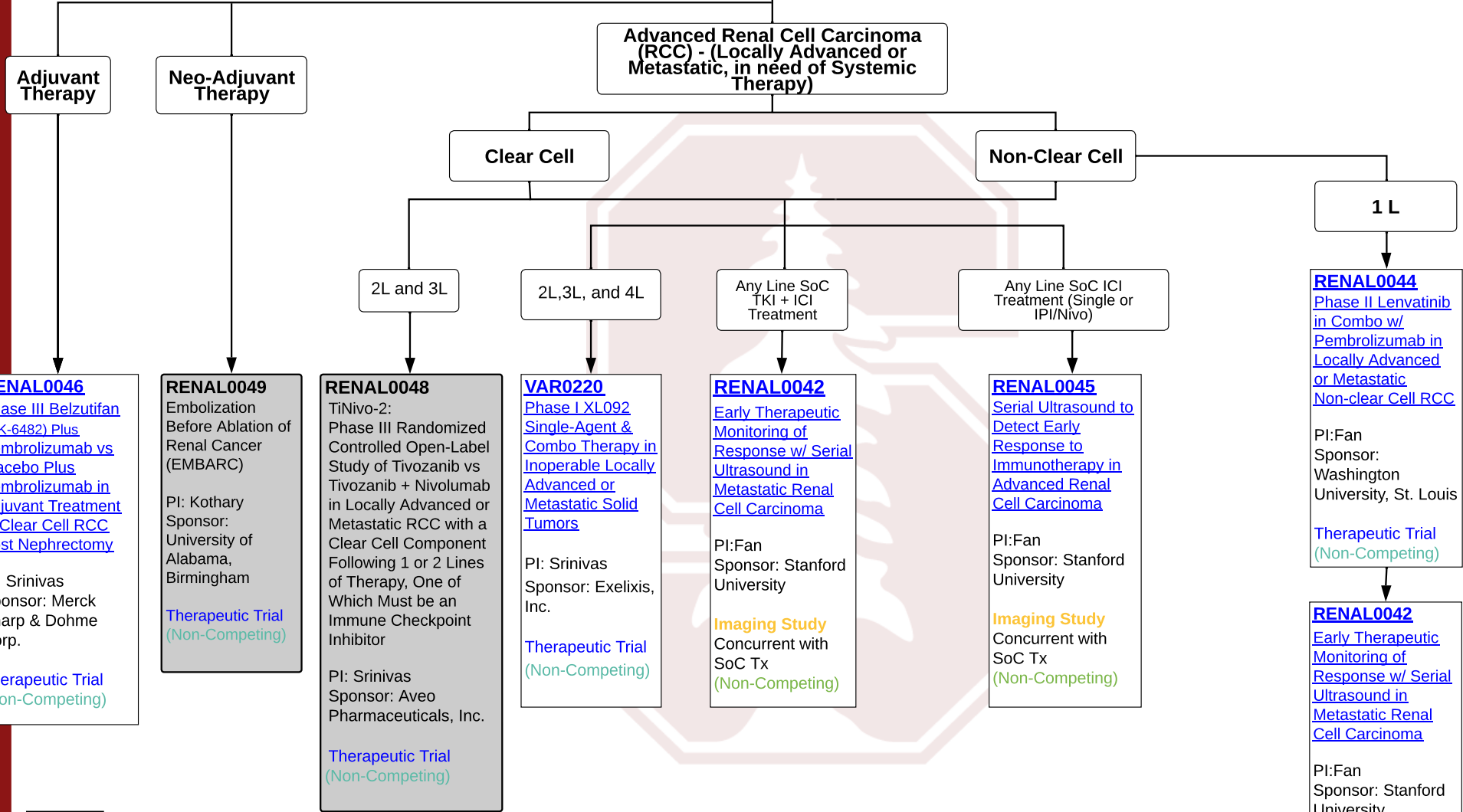


Kidney

Advanced Renal Cell Carcinoma (RCC) - (Locally Advanced or Metastatic, in need of Systemic Therapy)



RENAL0046
[Phase III Belzutifan \(MK-6482\) Plus Pembrolizumab vs Placebo Plus Pembrolizumab in Adjuvant Treatment of Clear Cell RCC Post Nephrectomy](#)
PI: Srinivas
Sponsor: Merck Sharp & Dohme Corp.
Therapeutic Trial (Non-Competing)

RENAL0049
Embolization Before Ablation of Renal Cancer (EMBARC)
PI: Kothary
Sponsor: University of Alabama, Birmingham
Therapeutic Trial (Non-Competing)

RENAL0048
TINivo-2: Phase III Randomized Controlled Open-Label Study of Tivozanib vs Tivozanib + Nivolumab in Locally Advanced or Metastatic RCC with a Clear Cell Component Following 1 or 2 Lines of Therapy, One of Which Must be an Immune Checkpoint Inhibitor
PI: Srinivas
Sponsor: Aveo Pharmaceuticals, Inc.
Therapeutic Trial (Non-Competing)

VAR0220
[Phase I XL092 Single-Agent & Combo Therapy in Inoperable Locally Advanced or Metastatic Solid Tumors](#)
PI: Srinivas
Sponsor: Exelixis, Inc.
Therapeutic Trial (Non-Competing)

RENAL0042
[Early Therapeutic Monitoring of Response w/ Serial Ultrasound in Metastatic Renal Cell Carcinoma](#)
PI: Fan
Sponsor: Stanford University
Imaging Study Concurrent with SoC Tx (Non-Competing)

RENAL0045
[Serial Ultrasound to Detect Early Response to Immunotherapy in Advanced Renal Cell Carcinoma](#)
PI: Fan
Sponsor: Stanford University
Imaging Study Concurrent with SoC Tx (Non-Competing)

RENAL0044
[Phase II Lenvatinib in Combo w/ Pembrolizumab in Locally Advanced or Metastatic Non-clear Cell RCC](#)
PI: Fan
Sponsor: Washington University, St. Louis
Therapeutic Trial (Non-Competing)

RENAL0042
[Early Therapeutic Monitoring of Response w/ Serial Ultrasound in Metastatic Renal Cell Carcinoma](#)
PI: Fan
Sponsor: Stanford University
Imaging Study Concurrent with RENAL0044 (Non-Competing)

KEY

- Pending
- Open for Enrollment
- Observational Study
- Optional Path
- Trial Posting
- Enrollment on Hold
- Extension Study
- Immunotherapy