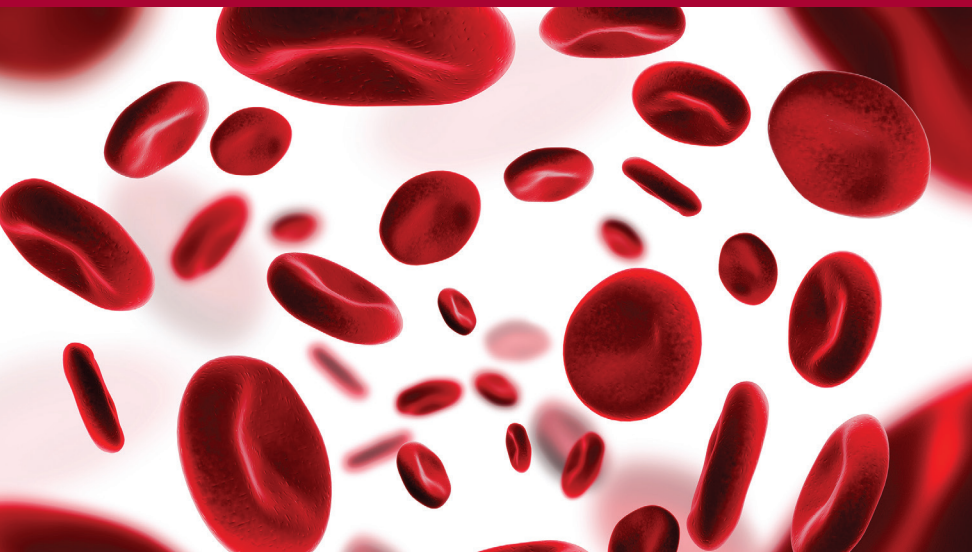


Stanford's Review of the 60TH Annual American Society of Hematology Meeting

A Continuing Medical Education Conference presented by the Department of Medicine, Division of Hematology at the Stanford University School of Medicine.



January 26, 2019

7:30 AM – 4:00 PM



The Ritz-Carlton,
Half Moon Bay
Half Moon Bay, CA

Sponsored by the
Stanford University School of Medicine



Stanford | MEDICINE

Program *Subject to change.*

SATURDAY, JANUARY 26, 2019

- 7:30-8:00 am REGISTRATION AND CONTINENTAL BREAKFAST
- 8:00-8:10 WELCOME/INTRODUCTION
Jason Gotlib, MD, MS
- 8:10-8:45 **60 Years of Hematology and Lymphoma at Stanford**
Saul Rosenberg, MD and Stanley Schrier, MD
- 8:45-9:05 **Myelodysplastic Syndromes (MDS)**
Peter Greenberg, MD
- 9:05-9:30 **Acute Myeloid Leukemia (AML)**
Daniel Pollyea, MD, MS
- 9:30-9:40 **Q&A Session**
Peter Greenberg, MD and Daniel Pollyea, MD, MS
- 9:40-10:00 BREAK
- 10:00-11:00 **Non-Malignant Hematology Case-Based Panel Discussion With Open Forum Q&A**
Caroline Berube, MD; Larry Leung, MD and fellows

BREAKOUT SESSIONS *Please select one session*

- 11:00-11:45 **Minimal Residual Disease Monitoring** OR **Focus on New Drug Approvals**
Steven Coutre, MD; Michaela Liedtke, MD; Daniel Pollyea, MD, MS TBD
- 11:45-12:45 pm LUNCH
- 12:45-1:30 **Molecular Hematopathology Tumor Board**
Jason Kurzer, MD, PhD; Jean Oak, MD PhD; Jim Zehnder, MD, and fellows
- 1:30-1:55 **Multiple Myeloma (MM)**
Michaela Liedtke, MD
- 1:55-2:20 **Myeloproliferative Neoplasms (MPN)**
Jason Gotlib, MD, MS
- 2:20-2:30 **Q&A Session**
Jason Gotlib, MD, MS and Michaela Liedtke, MD
- 2:30-2:45 BREAK
- 2:45-3:10 **Chronic Lymphocytic Leukemia (CLL)**
Steven Coutre, MD
- 3:10-3:50 **Hodgkin and Non-Hodgkin Lymphomas**
Ranjana Advani, MD
- 3:50-4:00 **Q&A Session**
Ranjana Advani, MD and Steven Coutre, MD
- 4:00-4:05 **Closing Remarks**
Michaela Liedtke, MD

Faculty *All faculty members are from Stanford University School of Medicine unless otherwise noted.*

COURSE DIRECTORS

- Jason Gotlib, MD, MS**
Professor of Medicine, Hematology
- Michaela Liedtke, MD**
Associate Professor of Medicine, Hematology

GUEST FACULTY

- Daniel Pollyea, MD, MS**
Associate Professor of Medicine
Clinical Director of Leukemia Services,
Division of Hematology
University of Colorado School of Medicine

STANFORD FACULTY

- Ranjana Advani, MD**
Saul A. Rosenberg, MD, Professor of Lymphoma,
Lymphoma DMG Leader, Stanford Cancer Institute
- Caroline Berube, MD**
Clinical Associate Professor of Medicine (Hematology)
- Steven Coutre, MD**
Professor of Medicine (Hematology)
Director of Hematology Clinic
- Jason Gotlib, MD, MS**
Professor of Medicine (Hematology)
- Peter Greenberg, MD**
Professor of Medicine (Hematology), Emeritus
- Jason Kurzer, MD, PhD**
Clinical Assistant Professor, Pathology
- Larry Leung, MD**
Maureen Lyles D'Ambrogio Professor in the School of Medicine,
Senior Associate Dean, Veteran Affairs
- Michaela Liedtke, MD**
Associate Professor of Medicine (Hematology)
- Jean Oak, MD, PhD**
Clinical Assistant Professor, Pathology
- Saul Rosenberg, MD**
Maureen Lyles D'Ambrogio Professor in the School of Medicine,
Emeritus
- Stanley Schrier, MD**
Professor of Medicine (Hematology), Emeritus
- Jim Zehnder, MD**
Professor Pathology (Research) and of Medicine (Hematology)

Register online at cme.stanford.edu/hematology

Stanford's Review of the 60TH Annual American Society of Hematology Meeting

January 26, 2019 • 7:30 AM – 4:00 PM • The Ritz-Carlton, Half Moon Bay, Half Moon Bay, CA

Course Overview

STATEMENT OF NEED

The 2019 Stanford Review of the 60th Annual ASH Conference will highlight cutting-edge research and data on hematologic disorders presented at the conference, as well as provide participants with updated treatment algorithms and strategies for optimizing the care of their patients. The symposium will utilize a variety of learning modalities, including case studies, panel discussions, and audience response questions, to facilitate meaningful interactions between expert faculty presenters and symposium participants.

TARGET AUDIENCE

This is a local/regional conference designed to meet the educational needs of Hematologists, Nurse Practitioners, Physician Assistants, Nurses, Pharmacists and Allied Health Professionals who care for patients with benign and malignant hematologic diseases.

LEARNING OBJECTIVES

At the conclusion of this activity, participants should be able to:

- Evaluate the use of new chemotherapeutics and biologic regimens in subpopulations of acute myeloid leukemia patients based on patient clinical and genetic prognostic factors and treatment goals
- Apply treatment strategies that optimally utilize JAK inhibitors and other novel agents in patients with myelofibrosis, PV, and other relevant MPNs
- Use prognostic models to risk stratify MPN patients for therapy
- Analyze the role of new biologics for the treatment of advanced systemic mastocytosis
- Evaluate optimal sequencing and combinations of novel biologicals for CLL
- Discuss the current role of Minimal Residue Disease (MRD) testing for the detection of molecular abnormalities
- Incorporate available therapeutic options for patients with low- or high-risk myelodysplastic syndromes and utilize the IPSS-R prognostic scoring system along with new mutation data to classify patients for treatment
- Determine the best combination regimens, novel agents, and new antibody therapies for different populations of newly diagnosed and relapsed/refractory myeloma patients, including patients who are transplant eligible and transplant ineligible
- Evaluate the results of phase II/III trials in Hodgkin and non-Hodgkin lymphomas
- Incorporate appropriate emerging novel therapies for patients with hemophilia
- Evaluate new treatment indications for direct oral anticoagulants for patients with non-malignant hematology
- Discuss new therapeutic directions in sickle cell disease and disorders of iron homeostasis

ACCREDITATION

The Stanford University School of Medicine is accredited by the Accreditation Council for Continuing Medical Education (ACCME) to provide continuing medical education for physicians.

CREDIT DESIGNATION

The Stanford University School of Medicine designates this live activity for a maximum of 6.25 *AMA PRA Category 1 Credits*[™]. Physicians should claim only the credit commensurate with the extent of their participation in the activity.

The California Board of Registered Nursing recognizes that Continuing Medical Education (CME) is acceptable for meeting RN continuing education requirements as long as the course is certified for *AMA PRA Category 1 Credit*[™] (rn.ca.gov). Nurses will receive a Certificate of Participation following this activity that may be used for license renewal.

COMMERCIAL SUPPORT ACKNOWLEDGEMENT

This CME activity is supported in part by educational grants. A complete list of commercial supporters will be published in the course syllabus.

FACULTY DISCLOSURE

The Stanford University School of Medicine adheres to ACCME Criteria, Standards and Policies regarding industry support of continuing medical education. Disclosure of faculty and their commercial relationships will be made prior to the activity.

Registration

Registration fee includes course materials, certificate of participation, breakfast and lunch.

ATTENDEE TYPE	FEES
Physicians	\$175
Nurses and Allied Health Professionals	\$175

Register online with Visa or Master Card by visiting cme.stanford.edu/hematology. If you prefer to pay by check or need assistance, please call (650) 497-8554 or email stanfordcme@stanford.edu. Be sure to register with an email address that you check frequently. Your email address is used for critical information, including registration confirmation, evaluation, and certificate.

CANCELLATION POLICY

Cancellations received in writing no less than 30 days before the course will be refunded, less a 20% administrative fee. No refunds will be made on cancellations received after that date. Please send cancellation requests to stanfordcme@stanford.edu.

Stanford University School of Medicine reserves the right to cancel this program; in the event of cancellation, course fees will be fully refunded.

CONFERENCE LOCATION



Ritz-Carlton, Half Moon Bay
1 Miramontes Point Road
Half Moon Bay, CA 94109

(650) 712-7000

<http://www.ritzcarlton.com/en/hotels/california/half-moon-bay>

ACCOMMODATIONS

For hotel accommodations please visit:
<https://www.visithalfmoonbay.org/stay>

CONTACT INFORMATION

For questions about the symposium, please contact Debbie Aube, CME Conference Coordinator at (650) 724-5318 or debbie.aube@stanford.edu.


Stanford Center for Continuing Medical Education

1520 Page Mill Road, Palo Alto, CA 94304

Phone: (650) 497-8554

Email: stanfordcme@stanford.edu Web: cme.stanford.edu

ACCESSIBILITY STATEMENT

 Stanford University School of Medicine is committed to ensuring that its programs, services, goods and facilities are accessible to individuals with disabilities as specified under Section 504 of the Rehabilitation Act of 1973 and the Americans with Disabilities Amendments Act of 2008. If you have needs that require special accommodations, including dietary concerns, please contact the CME Conference Coordinator.