

Stanford Breast in the West: Multi-Modality Breast Imaging Symposium for Radiologists



October 18-20, 2018

Monterey Plaza Hotel
Monterey, CA

A Continuing Medical Education Conference
presented by the Department of Radiology at
the Stanford University School of Medicine.

Sponsored by the Stanford University School of Medicine



Stanford | MEDICINE

Course Overview

WELCOME MESSAGE FROM THE COURSE DIRECTOR



“I am excited about our comprehensive Stanford Program with practical tips from world renowned experts Drs. Fredewald, Leung, Conant, Edmonds, and DeMartini on DBT, screening, abbreviated MRI, US, fiducials, and axillary lymph nodes. It will be a great update for breast imaging specialists and general radiologists alike!”

- Debra Ikeda, MD, Course Director

STATEMENT OF NEED

This CME course seeks to fulfill the need in the practicing radiology community to increase and improve the fund of knowledge as well as procedural skillset in performing the large variety of breast imaging procedures and techniques possible to optimize patients’ breast cancer detection and diagnosis. The course will utilize lectures and case studies to demonstrate best practices and imaging techniques/biopsy methods for finding breast cancer, and for positioning the breast to see cancer on mammograms.

TARGET AUDIENCE

This international conference is designed to meet the educational needs of physicians with a focus in radiology.

LEARNING OBJECTIVES

Upon completion of this educational activity, participants will be better able to:

- Utilize appropriate imaging techniques and modalities to ensure the optimal images are obtained to detect breast cancer
- Differentiate between the criteria for good and poor breast positioning in mammography
- Implement best practices for optimal breast positioning necessary for mammographic facilities

to meet MQSA EQUIP standards and to pass and maintain MQSA Accreditation

- Incorporate MQSA standards for Digital Breast Tomosynthesis (DBT) accreditation into clinical practice to pass yearly MQSA EQUIP inspections
- Identify best practices to interpret and correlate tomosynthesis results to mammography for the diagnosis of suspected breast cancer
- Evaluate the advantages and pitfalls associated with interpreting the results from breast MRI abbreviated sequences compared to standard MRI
- Develop strategies to correctly interpret the results from breast MRI abbreviated sequences
- Use best practices for image-guided breast biopsy under the guidance of mammography, ultrasound, or MRI

ACCREDITATION

The Stanford University School of Medicine is accredited by the Accreditation Council for Continuing Medical Education (ACCME) to provide continuing medical education for physicians.

CREDIT DESIGNATION

The Stanford University School of Medicine designates this live activity for a maximum of 17.5 *AMA PRA Category 1 Credits™*. Physicians should claim only the credit commensurate with the extent of their participation in the activity.

Program **Program is subject to change.*

Thursday, October 18, 2018

- 7:00-7:55 am REGISTRATION AND
■
- 7:55-8:00 **Welcome & Announcements**
Debra M. Ikeda, MD, FACR, FSBI
- 8:00-8:40 **Improving Breast Positioning with Standardized Approaches: Impact on EQUIP Inspections**
Debra M. Ikeda, MD, FACR, FSBI
- 8:40-9:20 **Tomosynthesis Literature Update 2018**
Sarah M. Friedewald, MD
- 9:20-10:00 **SPECIAL SESSION: Breast Density and Beyond: Risk Assessment in Breast Imaging**
Emily F. Conant, MD
- 10:00-10:15 BREAK
- 10:15-10:55 **Imaging of Breast Implants and the Reconstructed Breast**
Debra M. Ikeda, MD, FACR, FSBI
- 10:55-11:35 **Case-Based DBT and Synthetic 2D Imaging Implementation**
Emily F. Conant, MD
- 11:35-1:00 pm LUNCH
- 1:00-1:05 **Radiology CME Updates**
Geoffrey Riley, MD
- Afternoon Announcements**
Wendy B. DeMartini, MD, FSBI
- 1:05-1:45 **SPECIAL SESSION: How I Do It: Implementing DBT in Your Practice**
Sarah M. Friedewald, MD
- 1:45-2:25 **Ultrasound BI-RADS Review with Cases**
Wendy B. DeMartini, MD, FSBI
- 2:25-3:00 **Needle and Fiducial Marker Preoperative Localizations**
Debra M. Ikeda, MD, FACR, FSBI
- 3:00-3:15 BREAK
- 3:15-3:45 **Common DBT Misconceptions**
Sarah M. Friedewald, MD
- 3:45-4:45 **Film Panel—Multiple Breast Masses and Other Common Clinical Dilemmas on FFDM, DBT, US and MRI**
Moderator: Debra M. Ikeda, MD, FACR, FSBI
Emily F. Conant, MD
Wendy B. DeMartini, MD, FSBI
Sarah M. Friedewald, MD
- 4:45 pm **Adjourn for the day**

Friday, October 19, 2018

- 7:00-7:55 am ■
- 7:55-8:00 **Announcements**
Wendy B. DeMartini, MD, FSBI
- 8:00-8:40 **MRI BI-RADS and Review with cases**
Wendy B. DeMartini, MD, FSBI
- 8:40-9:20 **Breast Asymmetries: Terminology and Clinical Significance**
Jessica W.T. Leung, MD, FACR, FSBI

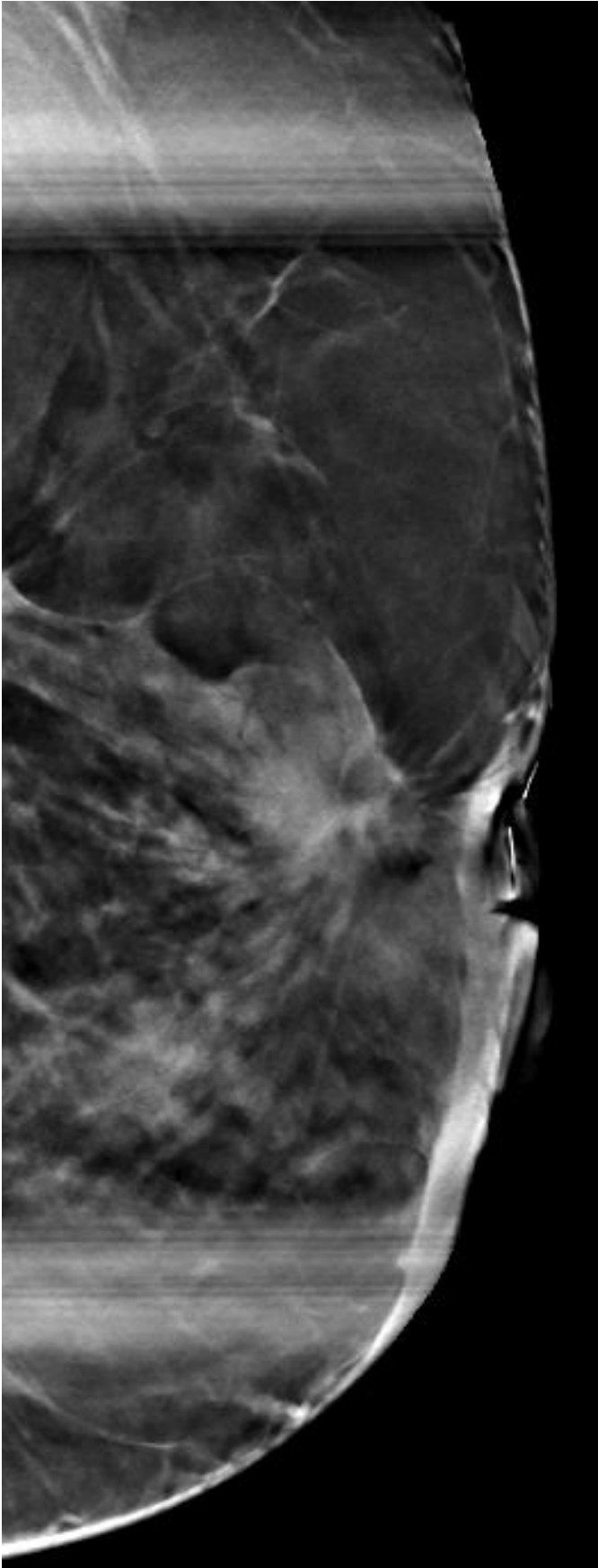
- 9:20-10:00 **SPECIAL SESSION: How we did it: Clinical Implementation of Fast MRI**
Emily F. Conant, MD
- 10:00-10:15 BREAK
- 10:15-10:55 **SPECIAL SESSION: PET for Breast Cancer**
Christine E. Edmonds, MD
- 10:55-11:35 **Ultrasound in Locoregional Staging of Breast Cancer**
Jessica W.T. Leung, MD, FACR, FSBI
- 11:35-1:00 pm LUNCH
- 1:00-1:05 **Afternoon Announcements**
Debra M. Ikeda, MD, FACR, FSBI
- 1:05-1:45 **SPECIAL SESSION: Background Parenchymal Enhancement**
Christine E. Edmonds, MD
- 1:45-2:25 **Imaging in Neoadjuvant Breast Cancer Treatment**
Jessica W.T. Leung, MD, FACR, FSBI
- 2:25-2:40 BREAK
- 2:40-3:20 **MRI-Guided and Other Image-Guided Biopsies**
Wendy B. DeMartini, MD, FSBI
- 3:20-3:50 **Breast MRI BI-RADS 3—What's the Data?**
Debra M. Ikeda, MD, FACR, FSBI
- 3:50-4:40 **Q&A on MRI, Mammography, Ultrasound and Biopsies**
Moderator: Debra M. Ikeda, MD, FACR, FSBI
- 4:40 pm **Adjourn for day**

Saturday, October 20, 2018

- 7:00-7:55 am ☒ ☒ ☒ ☒
- 7:55-8:00 **Announcements**
Debra M. Ikeda, MD, FACR, FSBI
- 8:00-8:40 **Breast MRI Interesting and Challenging Cases**
Christine E. Edmonds, MD
- 8:40-9:20 **Multimodality Breast Imaging: Case Review**
Jessica W.T. Leung, MD, FACR, FSBI
- 9:20-10:00 **SPECIAL SESSION: Tomosynthesis Guided Biopsy: Technique and Practice**
Sarah M. Friedewald, MD
- 10:00-10:15 BREAK
- 10:15-10:55 **Axillary Lymph Nodes: Evolving Imaging and Management Strategies**
Wendy B. DeMartini, MD, FSBI
- 10:55-11:25 **Radiologic Pathologic Correlation of MRI Guided Core Biopsy: Which Lesions to Remove?**
Christine E. Edmonds, MD
- 11:25-12:05 **False Negative Imaging: Where Did We Go Wrong?**
Emily F. Conant, MD
- 12:05-12:35 **Q&A**
Moderator: Debra M. Ikeda, MD, FACR, FSBI
- 12:35 pm **ADJOURN**

Faculty

All faculty members are from Stanford University School of Medicine unless otherwise noted.



COURSE DIRECTORS

Debra Ikeda, MD, FACR, FSBI

Professor of Radiology
Breast Imaging Fellowship Director

Wendy B. DeMartini, MD, FSBI

Professor of Radiology
Chief, Breast Imaging Division

GUEST FACULTY

Emily F. Conant, MD

Professor and Chief, Division of Breast Imaging
Vice Chair of Faculty Development
Department of Radiology
Hospital of the University of Pennsylvania

Christine E. Edmonds, MD

Instructor in Radiology
Center for Precision Imaging
Massachusetts General Hospital

Sarah M. Friedewald, MD

Division Chief of Breast and Women's Imaging
Medical Director, Lynn Sage Comprehensive
Breast Center
Northwestern Medicine/Prentice
Women's Hospital

Jessica W.T. Leung, MD, FACR, FSBI

Professor of Diagnostic Radiology
Section Chief of Breast Imaging
The University of Texas MD Anderson Cancer Center

FACULTY DISCLOSURE

The Stanford University School of Medicine adheres to ACCME Criteria, Standards and Policies regarding industry support of continuing medical education. Disclosure of faculty and their commercial relationships will be made prior to the activity.

Stanford Breast in the West: Multi-Modality Breast Imaging Symposium for Radiologists

October 18-20, 2018 • Monterey Plaza Hotel Monterey, CA

ATTENDEE TYPE	FEES
Physicians	\$1100
Fellows and Residents	\$ 495
Residents or fellows presenting poster session	\$ 450

Registration fee includes course materials, certificate of participation, breakfast and one lunch.

Register online with Visa or Master Card by visiting cme.stanford.edu/breastimg.

If you prefer to pay by check or need assistance, please call **(650) 497-8554** or email stanfordcme@stanford.edu. Be sure to register with an email address that you check frequently. Your email address is used for critical information, including registration confirmation, evaluation, and certificate.

CANCELLATION POLICY

Cancellations received in writing no less than 30 days before the course will be refunded, less a 20% administrative fee. No refunds will be made on cancellations received after that date. Please send cancellation requests to stanfordcme@stanford.edu.

Stanford University School of Medicine reserves the right to cancel this program; in the event of cancellation, course fees will be fully refunded.

CONFERENCE LOCATION



Monterey Plaza Hotel
400 Cannery Row
Monterey, CA 93940
Phone: (877) 636-1618

A block of rooms has been reserved at a reduced rate of \$289 (plus taxes) at the Monterey Plaza Hotel for

conference participants on a first-come, first-served basis. Please make your reservation by **September 17, 2018** in order to receive the conference rate. After this date, reservations will be accepted on a space-available basis and at regular hotel rates.

Room reservations should be made directly with hotel at **(800) 334-3999**. Please mention “Stanford Center for CME – Breast Imaging and Breast MRI Conference” when making your reservation. Note that upon making your reservation, your credit card will be charged one night room and tax to guarantee your reservation.

VISITOR INFORMATION

To learn more about traveling to Monterey, please visit <https://www.seemonterey.com/regions/monterey>.

CONTACT INFORMATION

For questions about the conference, please contact Joyce Wong, Conference Operations Manager at **(650) 497-4050** or Joyce.Wong@stanford.edu.

Stanford Center for Continuing Medical Education

1520 Page Mill Road, Palo Alto, CA 94304

Phone: **(650) 497-8554**

Email: stanfordcme@stanford.edu

Web: cme.stanford.edu



Stanford University School of Medicine is committed to ensuring that its programs, services, goods and facilities are accessible to individuals with disabilities as specified under Section 504 of the Rehabilitation Act of 1973 and the Americans with Disabilities Amendments Act of 2008. If you have needs that require special accommodations, including dietary concerns, please contact the CME Conference Coordinator.