

# Stanford Breast in the West: Multi-Modality Breast Imaging Symposium for Radiologists



**October 18-20, 2018**

Monterey Plaza Hotel  
Monterey, CA

A Continuing Medical Education Conference  
presented by the Department of Radiology at  
the Stanford University School of Medicine.

Sponsored by the Stanford University School of Medicine



**Stanford** | MEDICINE

# Course Overview

## WELCOME MESSAGE FROM THE COURSE DIRECTOR



*“I am excited about our comprehensive Stanford Program with practical tips from world renowned experts Drs. Fredewald, Leung, Conant, Edmonds, and DeMartini on DBT, screening, abbreviated MRI, US, fiducials, and axillary lymph nodes. It will be a great update for breast imaging specialists and general radiologists alike!”*

- Debra Ikeda, MD, Course Director

## STATEMENT OF NEED

This CME course seeks to fulfill the need in the practicing radiology community to increase and improve the fund of knowledge as well as procedural skillset in performing the large variety of breast imaging procedures and techniques possible to optimize patients’ breast cancer detection and diagnosis. The course will utilize lectures and case studies to demonstrate best practices and imaging techniques/biopsy methods for finding breast cancer, and for positioning the breast to see cancer on mammograms.

## TARGET AUDIENCE

This international conference is designed to meet the educational needs of physicians with a focus in radiology.

## LEARNING OBJECTIVES

*Upon completion of this educational activity, participants will be better able to:*

- Utilize appropriate imaging techniques and modalities to ensure the optimal images are obtained to detect breast cancer
- Differentiate between the criteria for good and poor breast positioning in mammography
- Implement best practices for optimal breast positioning necessary for mammographic facilities

to meet MQSA EQUIP standards and to pass and maintain MQSA Accreditation

- Incorporate MQSA standards for Digital Breast Tomosynthesis (DBT) accreditation into clinical practice to pass yearly MQSA EQUIP inspections
- Identify best practices to interpret and correlate tomosynthesis results to mammography for the diagnosis of suspected breast cancer
- Evaluate the advantages and pitfalls associated with interpreting the results from breast MRI abbreviated sequences compared to standard MRI
- Develop strategies to correctly interpret the results from breast MRI abbreviated sequences
- Use best practices for image-guided breast biopsy under the guidance of mammography, ultrasound, or MRI

## ACCREDITATION

The Stanford University School of Medicine is accredited by the Accreditation Council for Continuing Medical Education (ACCME) to provide continuing medical education for physicians.

## CREDIT DESIGNATION

The Stanford University School of Medicine designates this live activity for a maximum of 17.5 *AMA PRA Category 1 Credits*<sup>™</sup>. Physicians should claim only the credit commensurate with the extent of their participation in the activity.

# Program *\*Program is subject to change.*

## Thursday, October 18, 2018

7:00-7:55 am	REGISTRATION AND LIGHT BREAKFAST
7:55-8:00	<b>Welcome &amp; Announcements</b> <i>Debra M. Ikeda, MD, FACR, FSBI</i>
8:00-8:40	<b>Improving Breast Positioning with Standardized Approaches: Impact on EQUIP Inspections</b> <i>Debra M. Ikeda, MD, FACR, FSBI</i>
8:40-9:20	<b>Tomosynthesis Literature Update 2018</b> <i>Sarah M. Friedewald, MD</i>
9:20-10:00	<b>SPECIAL SESSION: Breast Density and Beyond: Risk Assessment in Breast Imaging</b> <i>Emily F. Conant, MD</i>
10:00-10:15	BREAK
10:15-10:55	<b>Imaging of Breast Implants and the Reconstructed Breast</b> <i>Debra M. Ikeda, MD, FACR, FSBI</i>
10:55-11:35	<b>Case-Based DBT and Synthetic 2D Imaging Implementation</b> <i>Emily F. Conant, MD</i>
11:35-1:00 pm	LUNCH
1:00-1:05	<b>Radiology CME Updates</b> <i>Geoffrey Riley, MD</i>
	<b>Afternoon Announcements</b> <i>Wendy B. DeMartini, MD, FSBI</i>
1:05-1:45	<b>SPECIAL SESSION: How I Do It: Implementing DBT in Your Practice</b> <i>Sarah M. Friedewald, MD</i>
1:45-2:25	<b>Ultrasound BI-RADS Review with Cases</b> <i>Wendy B. DeMartini, MD, FSBI</i>
2:25-3:00	<b>Needle and Fiducial Marker Preoperative Localizations</b> <i>Debra M. Ikeda, MD, FACR, FSBI</i>
3:00-3:15	BREAK
3:15-3:45	<b>Common DBT Misconceptions</b> <i>Sarah M. Friedewald, MD</i>
3:45-4:45	<b>Film Panel—Multiple Breast Masses and Other Common Clinical Dilemmas on FFDM, DBT, US and MRI</b> <i>Moderator: Debra M. Ikeda, MD, FACR, FSBI</i> <i>Emily F. Conant, MD</i> <i>Wendy B. DeMartini, MD, FSBI</i> <i>Sarah M. Friedewald, MD</i>
4:45 pm	<b>Adjourn for the day</b>
5:30-7:00 pm	<b>Reception and Scientific/Educational Poster Session—NO CME</b>

## Friday, October 19, 2018

7:00-7:55 am	LIGHT BREAKFAST
7:55-8:00	<b>Announcements</b> <i>Wendy B. DeMartini, MD, FSBI</i>
8:00-8:40	<b>MRI BI-RADS and Review with cases</b> <i>Wendy B. DeMartini, MD, FSBI</i>
8:40-9:20	<b>Breast Asymmetries: Terminology and Clinical Significance</b> <i>Jessica W.T. Leung, MD, FACR, FSBI</i>

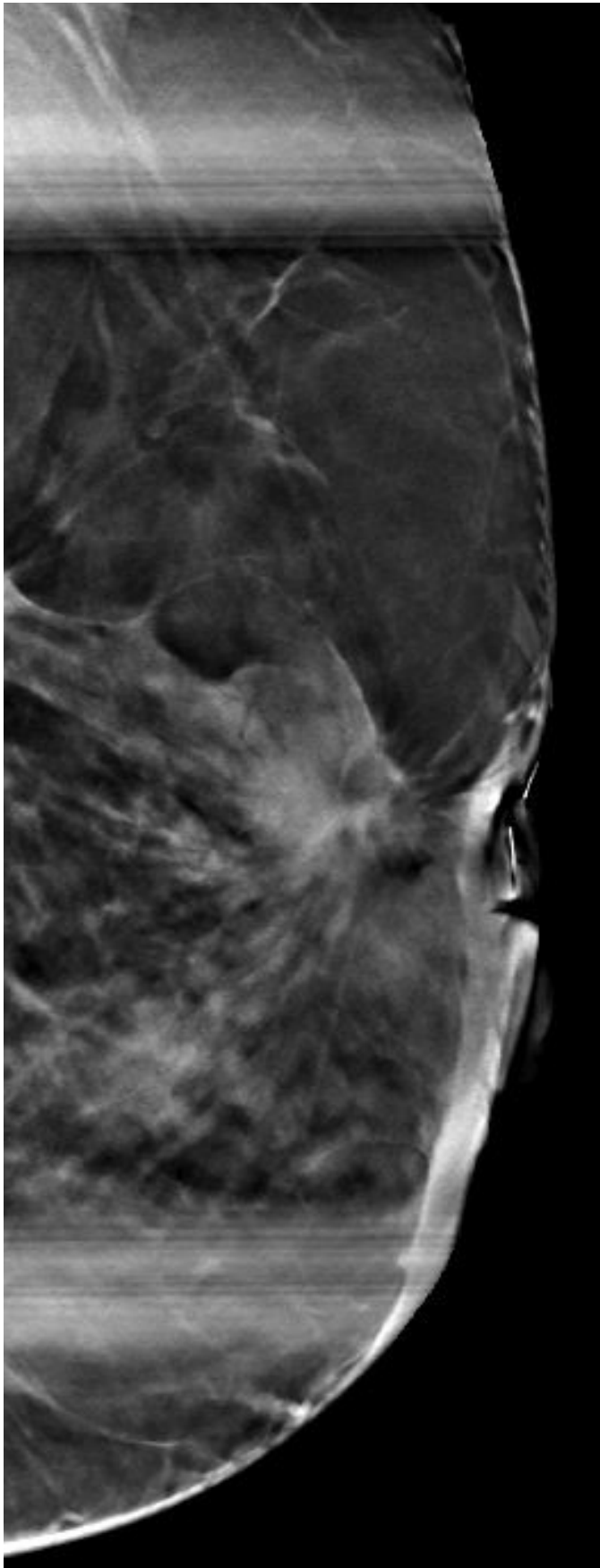
9:20-10:00	<b>SPECIAL SESSION: How we did it: Clinical Implementation of Fast MRI</b> <i>Emily F. Conant, MD</i>
10:00-10:15	BREAK
10:15-10:55	<b>SPECIAL SESSION: PET for Breast Cancer</b> <i>Christine E. Edmonds, MD</i>
10:55-11:35	<b>Ultrasound in Locoregional Staging of Breast Cancer</b> <i>Jessica W.T. Leung, MD, FACR, FSBI</i>
11:35-1:00 pm	LUNCH ON YOUR OWN
1:00-1:05	<b>Afternoon Announcements</b> <i>Debra M. Ikeda, MD, FACR, FSBI</i>
1:05-1:45	<b>SPECIAL SESSION: Background Parenchymal Enhancement</b> <i>Christine E. Edmonds, MD</i>
1:45-2:25	<b>Imaging in Neoadjuvant Breast Cancer Treatment</b> <i>Jessica W.T. Leung, MD, FACR, FSBI</i>
2:25-2:40	BREAK
2:40-3:20	<b>MRI-Guided and Other Image-Guided Biopsies</b> <i>Wendy B. DeMartini, MD, FSBI</i>
3:20-3:50	<b>Breast MRI BI-RADS 3—What's the Data?</b> <i>Debra M. Ikeda, MD, FACR, FSBI</i>
3:50-4:40	<b>Q&amp;A on MRI, Mammography, Ultrasound and Biopsies</b> <i>Moderator: Debra M. Ikeda, MD, FACR, FSBI</i>
4:40 pm	<b>Adjourn for day</b>

## Saturday, October 20, 2018

7:00-7:55 am	LIGHT BREAKFAST
7:55-8:00	<b>Announcements</b> <i>Debra M. Ikeda, MD, FACR, FSBI</i>
8:00-8:40	<b>Breast MRI Interesting and Challenging Cases</b> <i>Christine E. Edmonds, MD</i>
8:40-9:20	<b>Multimodality Breast Imaging: Case Review</b> <i>Jessica W.T. Leung, MD, FACR, FSBI</i>
9:20-10:00	<b>SPECIAL SESSION: Tomosynthesis Guided Biopsy: Technique and Practice</b> <i>Sarah M. Friedewald, MD</i>
10:00-10:15	BREAK
10:15-10:55	<b>Axillary Lymph Nodes: Evolving Imaging and Management Strategies</b> <i>Wendy B. DeMartini, MD, FSBI</i>
10:55-11:25	<b>Radiologic Pathologic Correlation of MRI Guided Core Biopsy: Which Lesions to Remove?</b> <i>Christine E. Edmonds, MD</i>
11:25-12:05	<b>False Negative Imaging: Where Did We Go Wrong?</b> <i>Emily F. Conant, MD</i>
12:05-12:35	<b>Q&amp;A</b> <i>Moderator: Debra M. Ikeda, MD, FACR, FSBI</i>
12:35 pm	<b>ADJOURN</b>

# Faculty

*All faculty members are from Stanford University School of Medicine unless otherwise noted.*



## **COURSE DIRECTORS**

### **Debra Ikeda, MD, FACR, FSBI**

Professor of Radiology  
Breast Imaging Fellowship Director

### **Wendy B. DeMartini, MD, FSBI**

Professor of Radiology  
Chief, Breast Imaging Division

## **GUEST FACULTY**

### **Emily F. Conant, MD**

Professor and Chief, Division of Breast Imaging  
Vice Chair of Faculty Development  
Department of Radiology  
Hospital of the University of Pennsylvania

### **Christine E. Edmonds, MD**

Instructor in Radiology  
Center for Precision Imaging  
Massachusetts General Hospital

### **Sarah M. Friedewald, MD**

Division Chief of Breast and Women's Imaging  
Medical Director, Lynn Sage Comprehensive  
Breast Center  
Northwestern Medicine/Prentice  
Women's Hospital

### **Jessica W.T. Leung, MD, FACR, FSBI**

Professor of Diagnostic Radiology  
Section Chief of Breast Imaging  
The University of Texas MD Anderson Cancer Center

## **FACULTY DISCLOSURE**

The Stanford University School of Medicine adheres to ACCME Criteria, Standards and Policies regarding industry support of continuing medical education. Disclosure of faculty and their commercial relationships will be made prior to the activity.



## Stanford Breast in the West: Multi-Modality Breast Imaging Symposium for Radiologists

October 18-20, 2018 • Monterey Plaza Hotel Monterey, CA

ATTENDEE TYPE	FEES
Physicians	\$1100
Fellows and Residents	\$ 495
Residents or fellows presenting poster session	\$ 450

Registration fee includes course materials, certificate of participation, breakfast and one lunch.

Register online with Visa or Master Card by visiting [cme.stanford.edu/breastimg](http://cme.stanford.edu/breastimg).

If you prefer to pay by check or need assistance, please call **(650) 497-8554** or email [stanfordcme@stanford.edu](mailto:stanfordcme@stanford.edu). Be sure to register with an email address that you check frequently. Your email address is used for critical information, including registration confirmation, evaluation, and certificate.

### CANCELLATION POLICY

Cancellations received in writing no less than 30 days before the course will be refunded, less a 20% administrative fee. No refunds will be made on cancellations received after that date. Please send cancellation requests to [stanfordcme@stanford.edu](mailto:stanfordcme@stanford.edu).

Stanford University School of Medicine reserves the right to cancel this program; in the event of cancellation, course fees will be fully refunded.

### CONFERENCE LOCATION



**Monterey Plaza Hotel**  
400 Cannery Row  
Monterey, CA 93940  
Phone: (877) 636-1618

A block of rooms has been reserved at a reduced rate of \$289 (plus taxes) at the Monterey Plaza Hotel for

conference participants on a first-come, first-served basis. Please make your reservation by **September 17, 2018** in order to receive the conference rate. After this date, reservations will be accepted on a space-available basis and at regular hotel rates.

Room reservations should be made directly with hotel at **(800) 334-3999**. Please mention “Stanford Center for CME – Breast Imaging and Breast MRI Conference” when making your reservation. Note that upon making your reservation, your credit card will be charged one night room and tax to guarantee your reservation.

### VISITOR INFORMATION

To learn more about traveling to Monterey, please visit <https://www.seemonterey.com/regions/monterey>.

### CONTACT INFORMATION

For questions about the conference, please contact Joyce Wong, Conference Operations Manager at **(650) 497-4050** or [Joyce.Wong@stanford.edu](mailto:Joyce.Wong@stanford.edu).

### Stanford Center for Continuing Medical Education

1520 Page Mill Road, Palo Alto, CA 94304

Phone: **(650) 497-8554**

Email: [stanfordcme@stanford.edu](mailto:stanfordcme@stanford.edu)

Web: [cme.stanford.edu](http://cme.stanford.edu)



Stanford University School of Medicine is committed to ensuring that its programs, services, goods and facilities are accessible to individuals with disabilities as specified under Section 504 of the Rehabilitation Act of 1973 and the Americans with Disabilities Amendments Act of 2008. If you have needs that require special accommodations, including dietary concerns, please contact the CME Conference Coordinator.