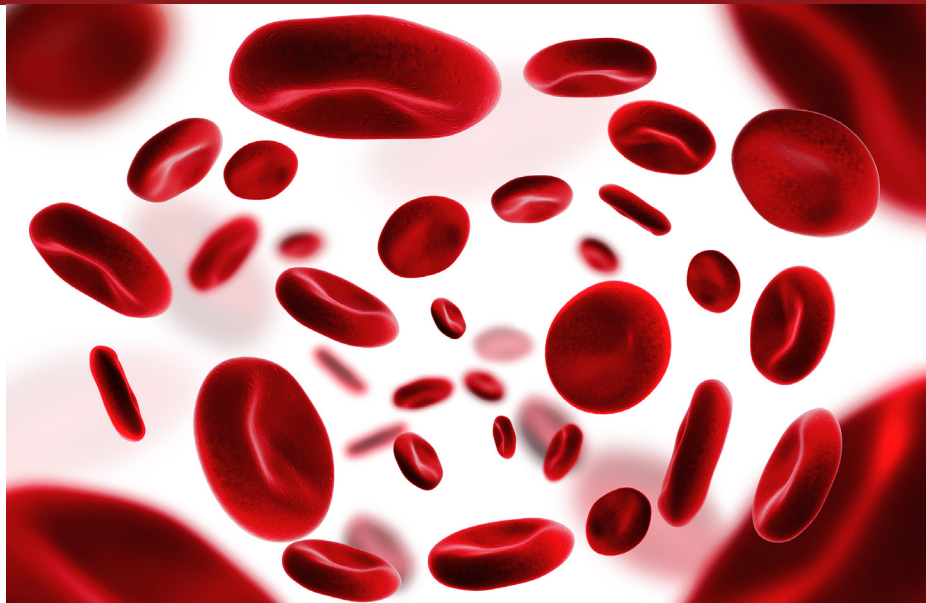


# Stanford's Review of the 59<sup>th</sup> Annual American Society of Hematology Meeting 2018

A Continuing Medical Education Conference Presented by the Division of Hematology at the Stanford University School of Medicine



## February 3, 2018

8:00 AM - 4:50 PM

Ritz-Carlton  
Half Moon Bay, CA



## Stanford | MEDICINE

Sponsored by the Stanford University School of Medicine

### Faculty

All faculty are with the Stanford University School of Medicine unless otherwise noted.

#### Course Director

**Jason Gotlib, MD, MS**

*Professor of Medicine, Division of Hematology*

#### Course Co-Director

**Michaela Liedtke, MD**

*Associate Professor of Medicine, Division of Hematology*

#### Stanford Faculty

**Ranjana Advani, MD**

*Saul A. Rosenberg MD, Professor of Lymphoma  
Division of Hematology*

**Caroline Berube, MD**

*Clinical Associate Professor, Division of Hematology*

**Steven Coutre, MD**

*Professor of Medicine, Division of Hematology*

**Dita Gratzinger, MD, PhD**

*Assistant Professor of Pathology, Department of Pathology*

**Peter Greenberg, MD**

*Professor of Medicine, Emeritus, Division of Hematology*

**Lawrence Leung, MD**

*Professor of Medicine, Division of Hematology*

**Bruno Medeiros, MD**

*Associate Professor of Medicine, Division of Hematology*

**Robert Ohgami, MD, PhD**

*Assistant Professor, Department of Pathology*

**Stanley Schrier, MD**

*Professor of Medicine, Emeritus, Division of Hematology*

**James Zehnder, MD**

*Professor, Department of Medicine (Hematology)  
and Department of Pathology*

#### Faculty Disclosure

The Stanford University School of Medicine adheres to ACCME Criteria, Standards and Policies regarding industry support of continuing medical education. Disclosure of faculty and their commercial relationships will be made prior to the activity.

### Program (subject to change)

8:00-8:30 AM	<b>Registration and Continental Breakfast</b>
8:30-8:40 AM	<b>Welcome/Introduction</b> Jason Gotlib, MD, MS
8:40-9:15 AM	<b>Myelodysplastic Syndromes (MDS)</b> Peter Greenberg, MD
9:15-9:50 AM	<b>Acute Myeloid Leukemia (AML)</b> Bruno Medeiros, MD
9:50-10:05 AM	<b>Q&amp;A Session</b> Peter Greenberg, MD and Bruno Medeiros, MD
10:05-10:20 AM	<b>Break</b>
10:20-11:30 AM	<b>Non-Malignant Hematology Case-Based Panel Discussion</b> Caroline Berube, MD; Lawrence Leung, MD; Stanley Schrier, MD; Moderator: Michaela Liedtke, MD
11:30-12:30 PM	<b>Lunch</b>
12:30-1:30 PM	<b>Molecular Hematopathology Tumor Board</b> Dita Gratzinger, MD, PhD; Robert Ohgami, MD, PhD; James Zehnder, MD
1:35-2:10 PM	<b>Multiple Myeloma (MM)</b> Michaela Liedtke, MD
2:10-2:45 PM	<b>Myeloproliferative Neoplasms (MPN)</b> Jason Gotlib, MD, MS
2:45-3:00 PM	<b>Q&amp;A Session</b> Michaela Liedtke, MD and Jason Gotlib, MD, MS
3:00-3:15 PM	<b>Break</b>
3:15-3:50 PM	<b>Chronic Lymphocytic Leukemia (CLL)</b> Steven Coutre, MD
3:50-4:30 PM	<b>Hodgkin and Non-Hodgkin Lymphomas</b> Ranjana Advani, MD
4:30-4:45 PM	<b>Q&amp;A Session</b> Steven Coutre, MD and Ranjana Advani, MD
4:45-4:50 PM	<b>Closing Remarks</b>

Register online at [cme.stanford.edu/hematology](http://cme.stanford.edu/hematology)

# Stanford's Review of the 59<sup>th</sup> Annual American Society of Hematology Meeting 2018

February 3, 2018 • 8:00 AM – 4:50 PM • Ritz-Carlton • Half Moon Bay, CA

## Conference Information

### STATEMENT OF NEED

This CME event led by the Stanford Division of Hematology seeks to fulfill the need of practicing Hematologists/Oncologists, Nurse Practitioners, Physician Assistants, Pharmacists and Allied Health Care Practitioners in the academic and community settings to increase the fund of knowledge in malignant and benign hematology by reviewing the latest data presented at the 59th Annual American Society of Hematology Meeting. The goal of the symposium is to enhance both competence and performance of practitioners in the diagnosis, prognostication, and treatment of patients with malignant and non-malignant hematologic disorders

### TARGET AUDIENCE

This conference is for hematologists, oncologists, nurse practitioners, physician assistants, nurses and pharmacists who care for patients with malignant and benign hematologic diseases.

### LEARNING OBJECTIVES

At the conclusion of this activity, learners will be able to:  
Review and evaluate data from the most recent clinical trials and develop strategies to:

1. Evaluate new chemotherapy/biologic regimens for different subpopulations of acute myeloid leukemia patients based on clinical and genetic prognostic factors and determine how to apply them to treatment decisions
2. Apply strategies to optimally utilize JAK inhibition and other novel agents in patients with myelofibrosis, polycythemia vera (PV), and other relevant Myeloproliferative Neoplasms (MPNs) and use prognostic models to risk stratify MPN patients for therapy
3. Analyze the role of new biologics for advanced systemic mastocytosis
4. Evaluate optimal sequencing and combinations of novel biologics for Chronic Lymphocytic Leukemia (CLL), and the current role of testing for molecular abnormalities and Minimal Residue Disease (MRD) testing
5. Incorporate available therapeutic options for patients with low- or high-risk myelodysplastic syndromes, including those who are relapsed/refractory to hypomethylating agents and utilize the IPSS-R prognostic scoring system and new mutation data to classify patients for treatment
6. Determine the best combination regimens and novel agents for relevant populations of newly diagnosed and relapsed/refractory myeloma patients, including transplant eligible vs. ineligible, and new antibody therapies, as well as the role for MRD testing
7. Evaluate the results of phase II/III trials in Hodgkin and non-Hodgkin lymphomas
8. Determine appropriate use of emerging novel therapies for patients with hemophilia
9. Evaluate new treatment indications for direct oral anticoagulants for patients with non-malignant hematology
10. Review new therapeutic directions in sickle cell disease and disorders of iron homeostasis

### ACCREDITATION

The Stanford University School of Medicine is accredited by the Accreditation Council for Continuing Medical Education (ACCME) to provide continuing medical education for physicians.

### CREDIT DESIGNATION

The Stanford University School of Medicine designates this live activity for a maximum of **6.75 AMA PRA Category 1 Credits™**. Physicians should claim only the credit commensurate with the extent of their participation in the activity.

The California Board of Registered Nursing recognizes that Continuing Medical Education (CME) is acceptable for meeting RN continuing education requirements as long as the course is certified for **AMA PRA Category 1 Credit™ (rn.ca.gov)**. Nurses will receive a Certificate of Participation following this activity that may be used for license renewal.

### COMMERCIAL SUPPORT ACKNOWLEDGEMENT

This CME activity is supported in part by educational grants. A complete list of commercial supporters will be published in the course syllabus.

### REGISTRATION

Registration fee includes course materials, certificate of participation, continental breakfast, and lunch.

Register online with a Visa or Master Card by visiting [cme.stanford.edu/hematology](http://cme.stanford.edu/hematology). If you prefer to pay by check or need assistance, please call (650) 497-8554 or email [stanfordcme@stanford.edu](mailto:stanfordcme@stanford.edu). Be sure to register with an email address that you check frequently. Your email address is used for critical information, including registration confirmation, evaluation, and certificate.

### ATTENDEE TYPE

ATTENDEE TYPE	FEE
Stanford Physician/Nurse/AHP	\$160.00
Stanford Resident/Fellow	Complimentary
Non-Stanford Physician/Nurse/AHP	\$160.00
Non-Stanford Resident/Fellow	\$160.00

### CANCELLATION POLICY

Cancellations received in writing no less than 30 days before the course will be refunded, less a 20% administrative fee. No refunds will be made on cancellations received after that date. Please send cancellation requests to [stanfordcme@stanford.edu](mailto:stanfordcme@stanford.edu).

*Stanford University School of Medicine reserves the right to cancel this program; in the event of cancellation, course fees will be fully refunded.*

### CONFERENCE LOCATION

#### Ritz-Carlton

1 Miramontes Point Rd, Half Moon Bay, CA 94019  
(650) 712-7000  
[www.ritzcarlton.com/en/hotels/california/half-moon-bay](http://www.ritzcarlton.com/en/hotels/california/half-moon-bay)

### LODGING & DIRECTIONS

For reservations, call (800) 241-3333 before January 2, 2018 and reference the name of the event.

### VISITOR INFORMATION

For more information about Half Moon Bay, CA please visit [www.visithalfmoonbay.org](http://www.visithalfmoonbay.org).

### CONTACT INFORMATION

For questions about the symposium, please contact **Dianna Ziehm**, CME Conference Coordinator, (650)724-7166 or email [dziehm@stanford.edu](mailto:dziehm@stanford.edu).

### Stanford Center for Continuing Medical Education

1520 Page Mill Road, Palo Alto, CA 94304  
Phone: (650) 497-8554 • Email: [stanfordcme@stanford.edu](mailto:stanfordcme@stanford.edu) • Web: [cme.stanford.edu](http://cme.stanford.edu)



Stanford University School of Medicine is committed to ensuring that its programs, services, goods and facilities are accessible to individuals with disabilities as specified under Section 504 of the Rehabilitation Act of 1973 and the Americans with Disabilities Amendments Act of 2008. If you have needs that require special accommodations, including dietary concerns, please contact the CME Conference Coordinator.

Register online at [cme.stanford.edu/hematology](http://cme.stanford.edu/hematology)