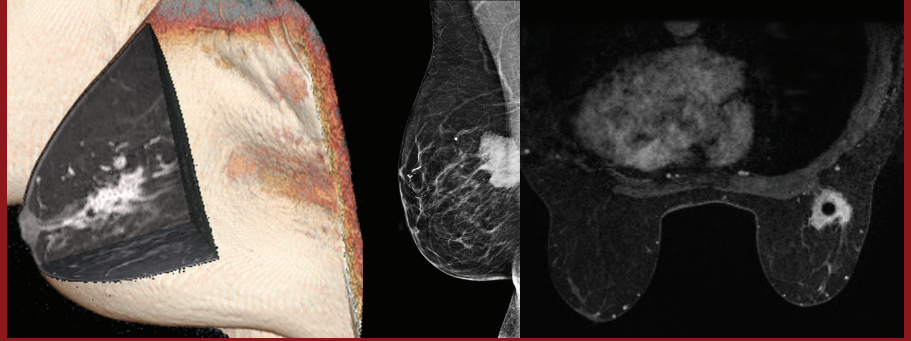


Stanford Breast in the West

MRI and MRI-Guided Procedure Update for Radiologists and Technologists



Includes a Saturday one-day course on Mammographic Breast Positioning, MQSA, and EQUIP for Mammography Technologists and Radiologists.

A Continuing Medical Education Conference presented by the Department of Radiology at the Stanford University School of Medicine

March 15-17, 2018

The Westin St. Francis, San Francisco Union Square, San Francisco, CA

Faculty *All faculty members and conference planners are from Stanford University School of Medicine unless otherwise noted.*

COURSE DIRECTOR



Debra M. Ikeda, M.D., FACR, FSBI
Professor of Radiology

COURSE CO-DIRECTORS



Bruce L. Daniel, M.D.
Professor of Radiology



Wendy B. DeMartini, M.D., FSBI
Professor of Radiology

STANFORD FACULTY

Bruce L. Daniel, M.D.

Professor of Radiology

Wendy B. DeMartini, M.D.

Professor of Radiology

Brian Hargreaves, Ph.D.

Associate Professor of Radiology (Radiological Sciences Laboratory) and, by Courtesy, of Electrical Engineering

and of Bioengineering

Debra M. Ikeda, M.D., FACR, FSBI

Professor of Radiology

GUEST FACULTY

Christopher E. Comstock, M.D., FACR, FSBI

Professor of Radiology

Memorial Sloan Kettering Cancer Center

Christiane K. Kuhl, M.D., Ph.D.

Professor and Chairman of Radiology

University Hospital Aachen, Germany

Constance D. Lehman, M.D., Ph.D., FACR, FSBI

Professor of Radiology, Chief of Breast Imaging

Massachusetts General Hospital

Louise Miller, RT, (R) (M) (ARRT), CRT, FSBI

Education Director, Mammography Educators

San Diego, CA

FACULTY DISCLOSURE

The Stanford University School of Medicine adheres to ACCME Criteria, Standards and Policies regarding industry support of continuing medical education. Disclosure of faculty and their commercial relationships will be made prior to the activity.

CALL FOR SCIENTIFIC AND EDUCATIONAL ABSTRACTS
cme.stanford.edu/breastmri

Sponsored by the Stanford University School of Medicine



Stanford | MEDICINE

Register online at cme.stanford.edu/breastmri

Program (subject to change)

Thursday, March 15, 2018

7:00-7:55 am	Registration and Continental Breakfast
7:55-8:00	Welcome & Announcements Debra M. Ikeda, M.D., FACR, FSBI
8:00-8:40	Breast MRI: Evidence-Based Clinical Indications Wendy B. DeMartini, M.D., FSBI
8:40-9:15	Breast MRI Physics: What You Need to Know About Your Sequences, Hardware and Software Brian Hargreaves, Ph.D.
9:15-9:55	Special Session: Background Parenchymal Enhancement Christopher E. Comstock, M.D., FACR, FSBI
9:55-10:15	Break
10:15-10:50	Breast MRI: Update on ACR Breast Lexicon and Standardized Reporting Wendy B. DeMartini, M.D., FSBI
10:50-11:30	Update on MRI and Contrast-Enhanced Digital Mammography Christopher E. Comstock, M.D., FACR, FSBI
11:30-12:00 pm	Imaging Breast Implants and the Reconstructed Breast Debra M. Ikeda, M.D., FACR, FSBI
12:00-1:15	Lunch on your own
1:15-1:20	Radiology CME Updates Geoffrey M. Riley, M.D.
	Afternoon Announcements Wendy B. DeMartini, M.D., FSBI
1:20-2:00	Special Session: How I Do It: A Practical Approach to Breast MRI Interpretation Wendy B. DeMartini, M.D., FSBI
2:00-2:35	MRI Safety Brian Hargreaves, Ph.D.
2:35-3:15	Case Review: Complexities of MRI/Ultrasound/Digital Breast Tomosynthesis (DBT)/Mammography Cases Christopher E. Comstock, M.D., FACR, FSBI
3:15-3:30	Break
3:30-4:10	MRI Artifacts Brian Hargreaves, Ph.D.
4:10-5:00	Q&A Panel: Artifacts, MRI, Contrast-Enhanced Mammography Diagnostic Cases with Correlation to Mammography, Digital Breast Tomosynthesis (DBT), and Ultrasound Diagnostic Cases Wendy B. DeMartini, M.D., FSBI, Moderator
5:00 pm	Adjourn for the day
5:30-7:00 pm	Reception and Poster Session (No CME)

Friday, March 16, 2018

7:00-7:55 am	Registration and Continental Breakfast
7:55-8:00	Announcements Debra M. Ikeda, M.D., FACR, FSBI
8:00-8:40	MRI-Guided Needle Localizations: How We Do It and Correlation to Mammography, Digital Breast Tomosynthesis (DBT), and Ultrasound Bruce L. Daniel, M.D.
8:40-9:20	MRI-Guided Core Biopsy: How To Get the Target Constance D. Lehman, M.D., Ph.D., FACR, FSBI
9:20-10:00	Special Session: Preoperative Staging for Breast Cancer with MRI Christiane K. Kuhl, M.D., Ph.D.
10:00-10:15	Break
10:15-10:55	What To Do With Incidental Enhancing Lesions and Probably Benign Findings Bruce L. Daniel, M.D.
10:55-11:45 pm	MRI-Guided Core Biopsies and Radiologic-Pathologic Correlation: Which Lesions to Remove? Christopher E. Comstock, M.D., FACR, FSBI
11:45-1:10	Lunch on your own
1:10-1:15	Afternoon Announcements Bruce L. Daniel, M.D.
1:15-1:55	Special Session: Update on Breast Cancer Screening with MRI and Mammography, including Abbreviated Sequences and Average-Risk Women Christiane K. Kuhl, M.D., Ph.D.
1:55-2:35	Difficult MRI Biopsy Cases with Mammography, Digital Breast Tomosynthesis (DBT), and Ultrasound Correlation Constance D. Lehman, M.D., Ph.D., FACR, FSBI
2:35-2:55	Break

2:55-3:35	Update on Axillary Lymph Nodes: Evolving Imaging and Management Strategies Wendy B. DeMartini, M.D., FSBI
3:35-4:15	MRI/DBT/Stereo/US Case Dilemmas Debra M. Ikeda, M.D., FACR, FSBI
4:15-5:00	Panel Discussion: MRI, Mammography, Digital Breast Tomosynthesis (DBT), Ultrasound, Biopsy, Breast Reconstruction, and Difficult Cases Moderator: Bruce L. Daniel, M.D.
5:00 pm	Adjourn for the day

Saturday, March 17, 2018

MRI and MRI-Guided Procedure Updates Concurrent Session	
7:00-7:55 am	Registration and Continental Breakfast
7:55-8:00	Announcements Bruce L. Daniel, M.D.
8:00-8:40	ACR Accreditation for Breast MRI Constance D. Lehman, M.D., Ph.D., FACR, FSBI
8:40-9:20	Digital Hybrid Breast PET/MRI for Enhanced Diagnosis of Breast Cancer (HYPMED): Concept and Rationale Christiane K. Kuhl, M.D., Ph.D.
9:20-10:00	Non-Contrast MRI Breast Sequences Bruce L. Daniel, M.D.
10:00-10:15	Break
10:15-10:55	Tricky MRI and MRI Biopsy Cases: Pitfalls and Solutions Christiane K. Kuhl, M.D., Ph.D.
10:55-11:30	Special Session: State of MRI in the United States Constance D. Lehman, M.D., Ph.D., FACR, FSBI
11:30-12:00 pm	Q&A Bruce L. Daniel, M.D., Moderator
12:00-1:25	Lunch on your own
Mammography Positioning, MQSA and EQUIP for Mammography Technologists and Radiologists	
7:00-7:25 am	Registration and Continental Breakfast
7:25-7:30	Welcome and Course Announcements Debra M. Ikeda, M.D., FACR, FSBI
7:30-8:30	Standardized Positioning: What's the Big Deal? Louise Miller, RT (R) (M) (ARRT), CRT, FSBI
8:30-9:00	Mammography and Digital Breast Tomosynthesis for Breast Cancer Diagnosis Debra M. Ikeda, M.D., FACR, FSBI
9:00-9:30	Criteria for Good Image Quality: How We Got Agreement Between Technologists and Radiologists for Optimal Workflow and Maintaining Optimal Imaging Debra M. Ikeda, M.D., FACR, FSBI
9:30-10:15	Positioning Problem Solving Louise Miller, RT (R) (M) (ARRT), CRT, FSBI
10:15-10:30	Break
10:30-12:00pm	Positioning Demonstration Louise Miller, RT (R) (M) (ARRT), CRT, FSBI
12:00-1:25	Lunch on your own
1:25-1:30	Afternoon Announcements Debra M. Ikeda, M.D., FACR, FSBI
1:30-2:10	Obtaining and Maintaining High Quality Mammography Images Through Quality Improvement: Practical Tips Debra M. Ikeda, M.D., FACR, FSBI
2:10-2:45	Special Session: Mammography Regulations: MQSA/EQUIP Debra M. Ikeda, M.D., FACR, FSBI; Louise Miller, RT (R) (M) (ARRT), CRT, FSBI
2:45-3:00	Break
3:00-3:30	Correlating Mammography, Digital Breast Tomosynthesis (DBT), Ultrasound and MRI Debra M. Ikeda, M.D., FACR, FSBI
3:30-4:10	Mission and Motivation for Mammography Technologists and Facilities Louise Miller, RT (R) (M) (ARRT), CRT, FSBI
4:10-5:00	Q&A: Mammography Positioning, Image Quality, Image Quality Programs, Digital Breast Tomosynthesis (DBT), Ultrasound, MRI, and MQSA/EQUIP Debra M. Ikeda, M.D., FACR, FSBI
5:00 pm	Adjourn

Conference Information

STATEMENT OF NEED

This CME activity seeks to fulfill the educational needs of radiologists and technologists who manage patients with possible breast cancer undergoing Breast Magnetic Resonance Imaging (MRI) or mammography. The goal of the conference is to address identified clinical challenges, to update practitioners and technologists on the latest advances and best practices in breast MRI and mammography positioning, and to assist practitioners in developing strategies to apply this knowledge to the diagnosis, treatment and/or referral of patients with breast cancer. Lectures with question and answer sessions will afford learners the opportunity to discuss practice dilemmas with expert faculty.

TARGET AUDIENCE

This international conference is designed to meet the educational needs of Radiologists, MRI Technologists, and Mammography Technologists.

LEARNING OBJECTIVES

Breast MRI and MRI-Guided Procedure Updates

At the conclusion of this activity, participants should be able to:

- Apply national standards for Breast MRI indications and the latest information on MRI screening, and adopt a practice to determine when to perform which imaging modality (MRI, DBT, mammography or ultrasound) in order to achieve the best outcomes for patients.
- Consider MRI safety issues and develop strategies to implement safety measures in practice.
- Evaluate the advantages and pitfalls of abbreviated breast MRI pulse sequences and determine their implications for workflow in practice.
- Adopt standard breast MRI, ultrasound and mammography terminology from the updated 2013 BIRADS Atlas
- Correctly interpret and report breast-imaging findings and correlate them from one study to the next to avoid diagnostic mistakes.
- Employ techniques to safely and accurately target and biopsy suspicious breast lesions under MRI, and identify which pathologies to follow with imaging or to remove with surgery.
- Evaluate the scientific literature on Contrast-Enhanced Mammography (CEM) in order to determine if it is a safe method to use on patients.

Saturday one-day course on Mammography Positioning, MQSA and EQUIP for Mammography Technologists and Radiologists

At the conclusion of this activity, participants should be able to:

- Evaluate mammograms for good positioning using 13 criteria.
- Demonstrate ability to apply appropriate mammographic techniques to ensure the best images to detect breast cancer.
- Apply MQSA standards for digital breast tomosynthesis accreditation and comply with new MQSA EQUIP standards.

ACCREDITATION

The Stanford University School of Medicine is accredited by the Accreditation Council for Continuing Medical Education (ACCME) to provide continuing medical education for physicians.

CREDIT DESIGNATION

The Stanford University School of Medicine designates this live activity for a maximum of **21.50 AMA PRA Category 1 Credits™**. Physicians should claim only the credit commensurate with the extent of their participation in the activity.

- Three Day Breast MRI and MRI-Guided Procedure Updates: Maximum of **21.00 AMA PRA Category 1 Credits™**
- Two Day Breast MRI and MRI-Guided Procedure Updates plus Mammography Positioning and EQUIP for Mammography Technologists and Radiologists: Maximum of **21.50 AMA PRA Category 1 Credits™**.
- One Day Mammography Positioning and EQUIP for Mammography Technologists and Radiologists: Maximum of **7.50 AMA PRA Category 1 Credits™**.

COMMERCIAL SUPPORT ACKNOWLEDGEMENT

This CME activity is supported in part by educational grants and in-kind support. A complete list of commercial supporters will be published in the course syllabus.

CALL FOR SCIENTIFIC AND EDUCATIONAL ABSTRACTS

Information about submission for poster abstracts may be found on the conference website at cme.stanford.edu/breastmri.

Registration

REGISTRATION

Registration fee includes course materials, certificate of participation, breakfast each day and reception on Thursday, March 15, 2018.

Register online with Visa or Master Card by visiting cme.stanford.edu/breastmri. If you prefer to pay by check or need assistance, please call (650) 497-8554 or email stanfordcme@stanford.edu.

Be sure to register with an email address that you check frequently. Your email address is used for critical information, including registration confirmation, evaluation, and certificate.

ATTENDEE TYPE

ATTENDEE TYPE	FEES
Physicians, all three days	\$1,100
Technologists, all three days	\$595
Residents/Fellows, all three days	\$595
Poster Presenters	\$500
Mammography Positioning Course, Saturday, March 17, 2018 (only)	\$395

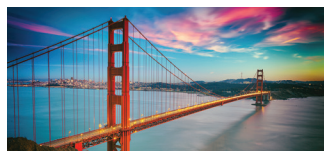
CANCELLATION POLICY

Cancellations received in writing no less than 30 days before the course will be refunded, less a 20% administrative fee. No refunds will be made on cancellations received after that date. Please send cancellation requests to stanfordcme@stanford.edu.

Stanford University School of Medicine reserves the right to cancel this program; in the event of cancellation, course fees will be fully refunded. We are not responsible for other costs incurred such as non-refundable airline tickets or hotel penalties.

CONFERENCE LOCATION

The Westin St. Francis
335 Powell Street
San Francisco CA 94102



ACCOMMODATIONS

A block of rooms has been reserved at a reduced rate of \$259 (plus taxes) at the Westin St. Francis, Union Square for conference participants on a first-come, first-served basis. Please make your reservation by **February 12, 2018** in order to receive the conference rate. After this date, reservations will be accepted on a space-available basis and at regular hotel rates.

Room reservations should be made directly with the Westin St. Francis, San Francisco either online: <http://bit.ly/2hgSks7> or by calling the hotel directly at (800) 937-8461. Please mention "Stanford Medicine Spring Breast Imaging Conference" when making your reservation.

VISITOR INFORMATION

Learn more about visiting San Francisco by going here: <http://www.sftravel.com>

CONTACT INFORMATION

For questions about the conference, please contact **Dianna Ziehm**, CME Conference Coordinator at (650) 724-7166 or dziehm@stanford.edu.

Stanford Center for Continuing Medical Education

1520 Page Mill Road, Palo Alto, CA 94304

Phone: (650) 497-8554

Email: stanfordcme@stanford.edu

Web: cme.stanford.edu



Stanford University School of Medicine is committed to ensuring that its programs, services, goods and facilities are accessible to individuals with disabilities as specified under Section 504 of the Rehabilitation Act of 1973 and the Americans with Disabilities Amendments Act of 2008. If you have needs that require special accommodations, including dietary concerns, please contact the CME Conference Coordinator.

Register early, space is limited • Register online at cme.stanford.edu/breastmri