

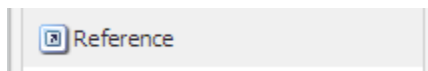
Reference Component

Description of Component

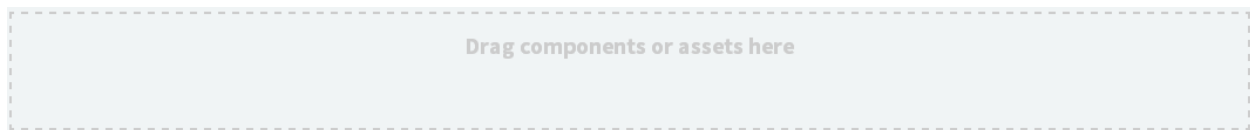
The Reference component is a great tool to utilize for the reuse of content that is repeatable on your website. For content that stays the same (such as text that is reused) you can use the Reference component to select the content and place it on multiple web pages, without having to retype the content.

How to Use the Component

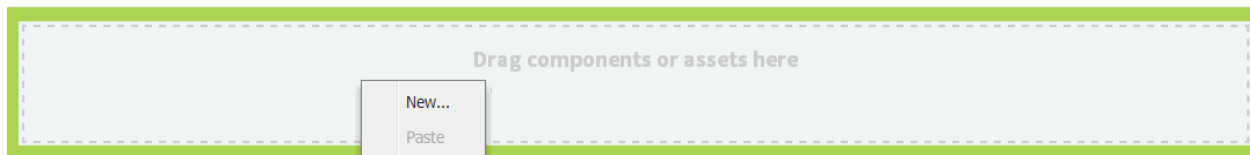
1. You can identify the Reference component in the Web Author toolkit as follows:



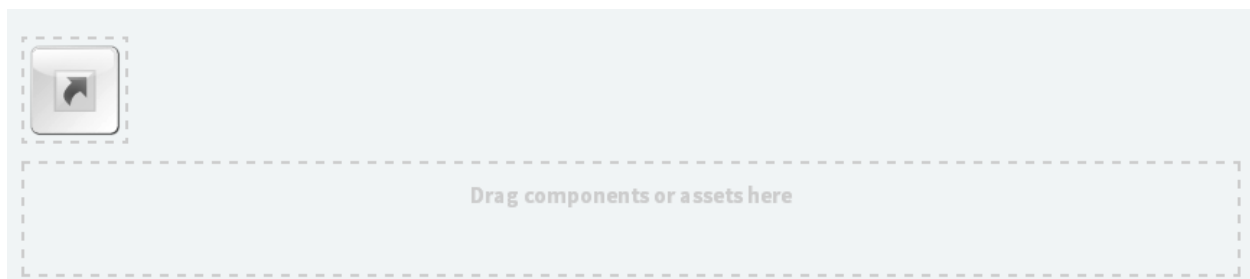
2. Drag the component onto the page in the place where you want the text to display.



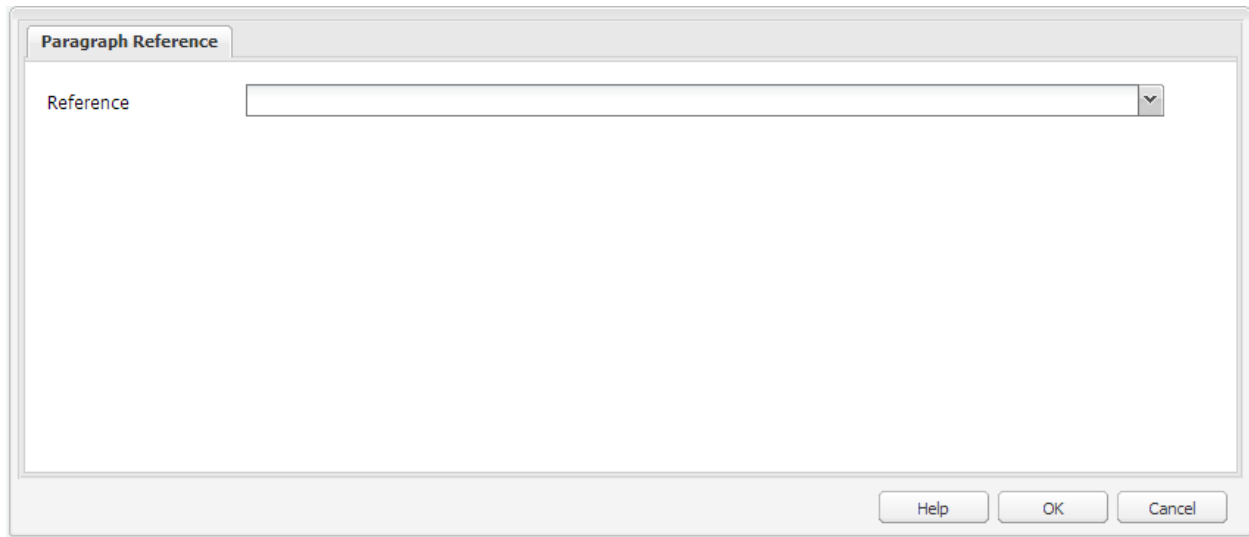
3. Or, right click and select New.



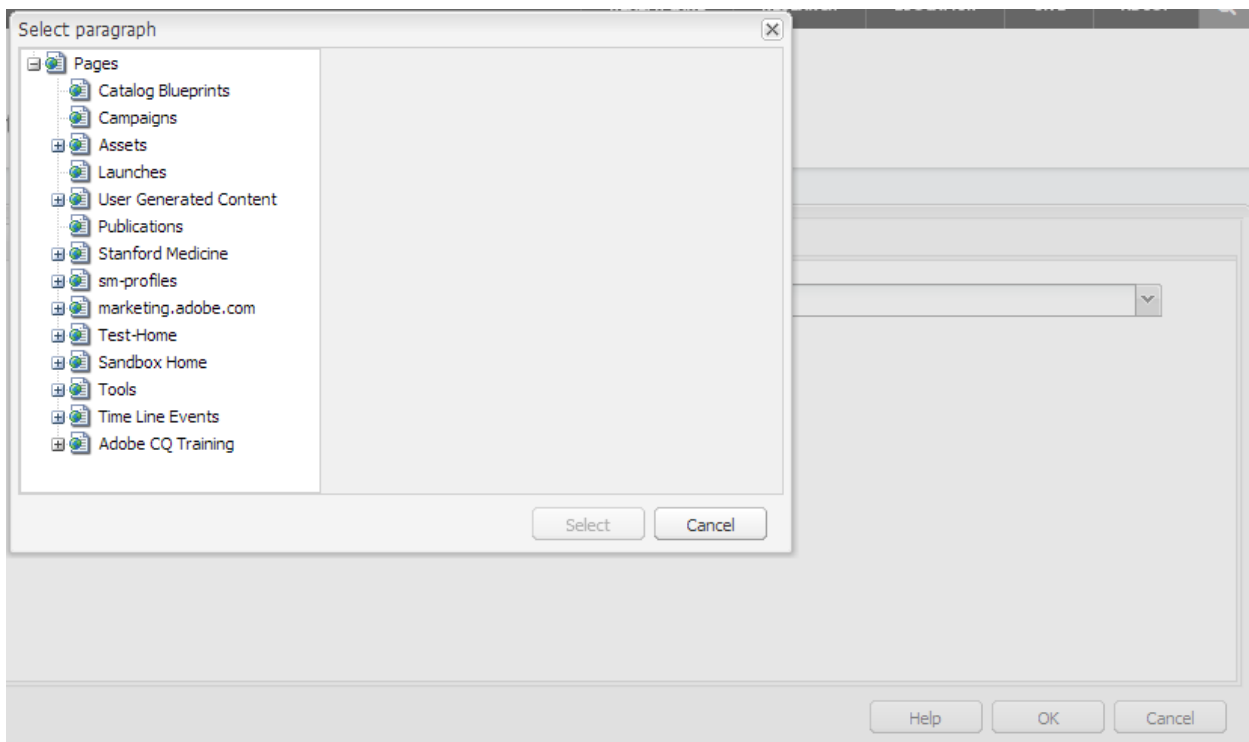
The component displays on the web page similar to the example below.



4. Right click or double click to open the component to edit it.

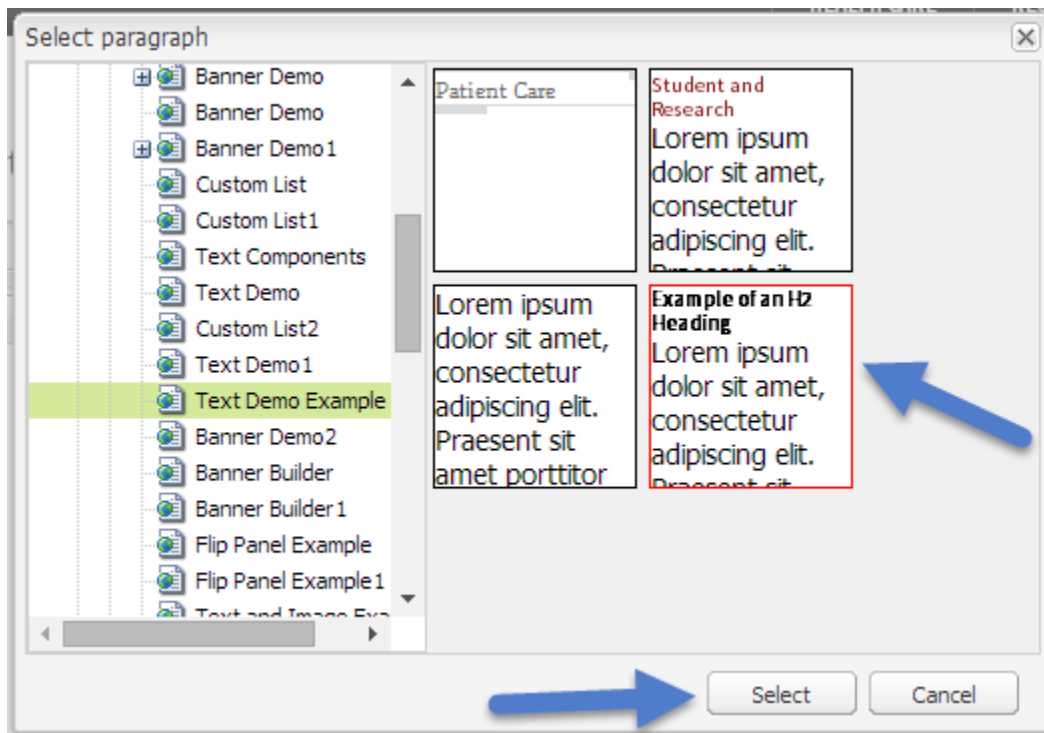


5. Click the down arrow to select the content to reuse.

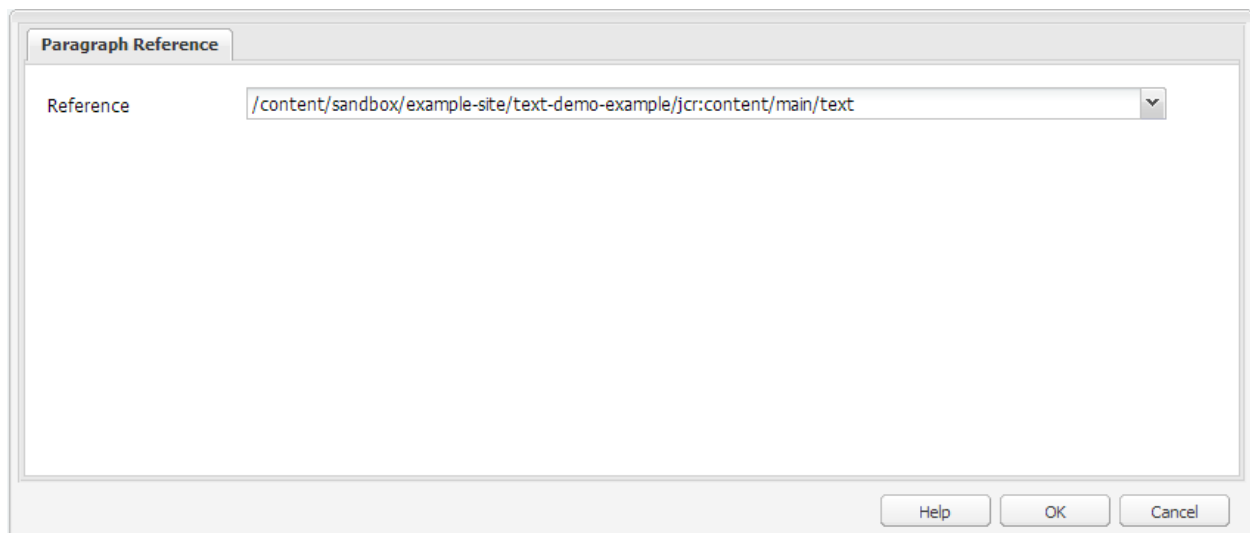


6. Select the page from the list.

7. Select the content from the page to highlight it. To save the selection click Select.



8. The content path displays.



9. Click OK to save to the page.

10. The results save to the page as formatted from the source material.

Example of an H2 Heading

Lorem ipsum dolor sit amet, consectetur adipiscing elit. Praesent sit amet porttitor nisi. Donec arcu arcu, sodales a hendrerit ut, auctor ut enim. Morbi ullamcorper ipsum non risus varius, eget pretium nunc scelerisque. Quisque semper diam a nunc vulputate, in mollis metus bibendum. Nunc porta eleifend tincidunt. Nunc dictum turpis lorem, sed tempus augue pharetra at. Cras eu ullamcorper nunc. In hac habitasse platea dictumst. Aliquam erat volutpat. Nulla facilisi. Phasellus vestibulum elementum libero, a pulvinar tortor hendrerit eu. Nullam velit mauris, malesuada at lacinia sed, tincidunt sed mauris. Ut adipiscing libero at sapien sodales gravida. Praesent non diam a erat porttitor lobortis sit amet quis nisi.