

STANFORD PD SURGERY – 2023 Quick Start Literature Searching Toolkit

Surgery Liaison: Christopher Stave, MLS
GME/Clinical Education Librarian
Lane Medical Library, Stanford Medicine
cstave@stanford.edu



COURSE OBJECTIVES: *BY THE END OF THIS SESSION YOU WILL BE ABLE TO*

1. Quickly locate articles, journals, and books
2. Manage your citations, PDFs, and bibliographies with Zotero
3. Utilize some quick tips for getting better results from PubMed
4. Explore some of Lane's powerful anatomy visualization tools
5. Register for Browzine, a web/mobile based current awareness tool

Part 1: *THE BASICS*

LANE LIBRARY WEBSITE: Use it to find digital texts, journals, etc. e.g., *JOMI*

SURGERY GUIDE: Core texts and other research resources in Surgery.

TOP MOBILE APPS AT LANE Source Download and install *UpToDate*, *DynaMed*, *Complete Anatomy* and more.

LITERATURE SEARCH SERVICE Need to run a lit review? We can help!

LIBKEY full-text browser extension. If we don't carry the journal, we get you the article at no charge to you via our **DOCPRESS** service. [Example](#)

ZOTERO: Open-source reference/PDF/bibliography management application. Extremely effective at quickly capturing a wide variety of content from the web; e.g., webpages, PDFs, databases citations, etc.

GETTING HELP, ASKING FOR STUFF: Use "Live Chat" or "Ask Us" if you have a question. You can also ask for help from your divisions/department's library liaison:

Part 2: *PUBMED: KEYS TO SUCCESS*

- **BEST MATCH:** Run a search and note the results are sorted by *Best Match*
simulation vascular access
- **WILDCARDS:** Use the asterisk * as a wildcard for term variants,
*intubat** retrieves intubation, intubate, etc.
- **PHRASE SEARCHING:** Use quotes when looking for a phrase
"surgical residen" AND simulation*
- **OPERATORS:** The key PubMed search operators are "AND," "OR," "NOT." MUST be in upper case!

"cardiothoracic surgery" AND career AND women*
"cardiothoracic surgery" AND career AND women OR gender Why so many?*
"cardiothoracic surgery" AND career AND (women OR gender) Parentheses! Big improvement!*

- **TAGS:** Use PubMed field tags to search particular field(s) within a reference.
 - **[ti] TITLE** searching is an incredibly effective initial strategy as it quickly retrieves highly relevant citations: *"cardiothoracic surgery" [ti] AND (women [ti] OR gender [ti])*
 - **[tw] TEXTWORD** searching is a broad search of multiple fields within a reference, *not* the full text of the article. These fields include: Title, Abstract, Medical Subject Headings, and Author Keywords. *"cardiothoracic surgery" [tw] AND (women [ti] OR gender [ti])*
- **SEARCH FILTERS:** Limits include language, age group, subject, date range, and study type.
- **SEARCH STRING FOR COVID – e.g., "cardiothoracic surgery" [tw] AND**

("covid 19" [tw] OR "novel coronavirus" [tw] OR "sars cov 2" [tw] OR "ncov 2019" [tw] OR (wuhan [tw] AND coronavirus [tw]) OR "corono virus" [tw] OR "coronavirus disease 2019" [tw] OR "coronavirus disease 19" [tw] OR "2019 ncov" [tw] OR "coronavirus 2" [tw] OR "severe acute respiratory syndrome coronavirus 2" [Supplementary Concept] OR "COVID-19" [Supplementary Concept]) AND english [lang]

- **SEARCH STRING FOR PEDIATRICS:**
 (infan* [tw] OR newborn* [tw] OR "new-born" [tw] OR "new borns" [tw] OR perinat* [tw] OR neonat* [tw] OR baby [tw] OR baby* [tw] OR babies [tw] OR toddler* [tw] OR minors [tw] OR child [tw] OR child* [tw] OR children* [tw] OR schoolchild* [tw] OR "school child" [tw] OR "school children" [tw] OR adolescen* [tw] OR juvenil* [tw] OR youth* [tw] OR teen* [tw] OR "under age" [tw] OR pubescen* [tw] OR prepubesc* [tw] OR pediatric* [tw] OR paediatric* [tw] OR "Nursery school" [tw] OR kindergar* [tw] OR "primary school" [tw] OR "secondary school" [tw] OR "elementary school" [tw] OR "high school" [tw] OR "primary schools" [tw] OR "secondary schools" [tw] OR "elementary school" [tw] OR "high schools" [tw] OR highschool* [tw] OR "infant" [mesh] OR "Child" [mesh] OR "Adolescent" [mesh] OR "Minors" [mesh] OR "Puberty" [mesh] OR "Pediatrics" [mesh] OR pediatrics)
- **SEARCH STRING FOR TRAINING/CURRICULUM:**
 ("Curriculum" [Mesh] OR "Inservice Training" [Mesh] OR train* [tw] OR curricul* [tw] OR education [sh] OR educat* [tw])
- **SEARCH STRING FOR RESIDENTS/FELLOWS:**
 ("internship and residency" [mesh] OR "Education, Medical, Graduate" [mesh] OR "Fellowships and Scholarships" [Mesh] OR interns [ti] OR intern [ti] OR residen* [ti] OR fellow* [ti])

Part 3: **BEYOND PUBMED! EXPLORING OTHER DATABASES**

Choosing Databases: As a Stanford affiliate, you have access to an amazing array of electronic databases and databanks. Not sure where to start? Contact a research librarian at Lane Library.

- **WEB OF SCIENCE:** A multi-disciplinary database that tracks the number of times articles are cited. Covers scientific journals, books and many conference proceedings *cardiothoracic AND staph**Run the search, then sort by **Times Cited** Also, note the Global Health database!
- **MEDEDPORAL.ORG:** AAMC's open access *journal* of teaching and learning resources in the health professions. Publications are "...publications are stand-alone, complete teaching or learning modules that have

been implemented and evaluated with medical or dental trainees or practitioners." *surgical skills medical students*

- **GRADUATE SCHOOL OF BUSINESS LIBRARY:** The Graduate School of Business Library has developed a variety of guides to business resources related to medical devices and healthcare, including market research reports. *surgery virtual reality*

Part 4: **GOOGLE TIPS! GOOGLE AND/OR GOOGLE SCHOLAR**

GOOGLE: SITE: When a website's search engine feels "under powered," you can use Google's "SITE:" option to search the website from within Google.

antibiotic prophylaxis site:sts.org

guideline Hypertrophic Cardiomyopathy site:.org

exercise heart disease -site:.com

GOOGLE: FILETYPE: PDF and more. You can limit searches to certain types of files, e.g., PPT, DOC, PDF.

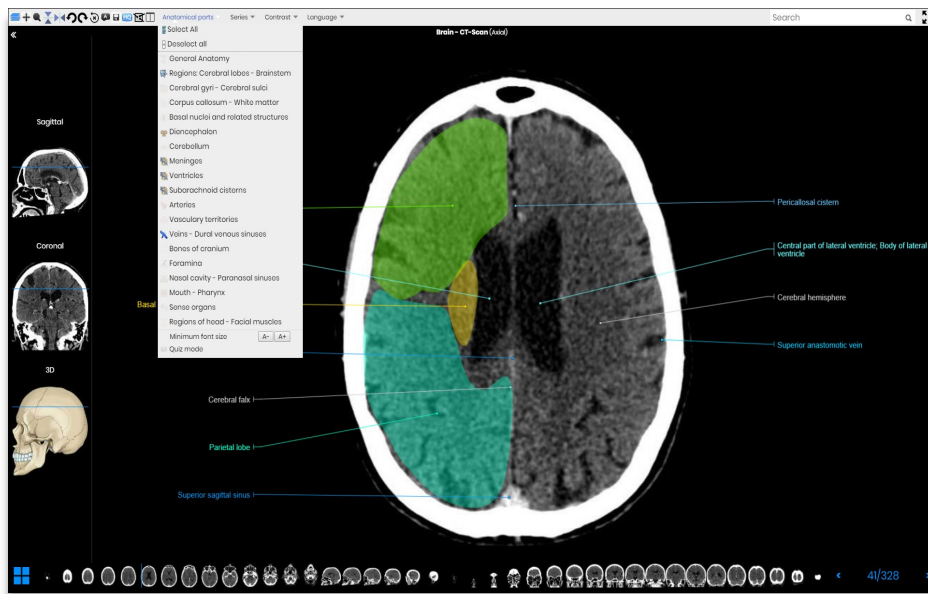
implementation "surgical checklist" global health filetype:pdf

GOOGLE SCHOLAR: A full-text academic journal article search engine.

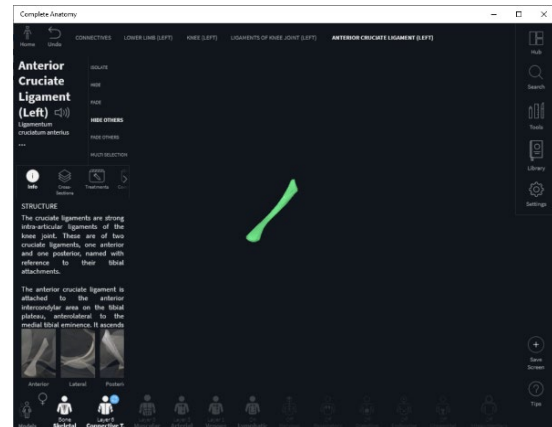
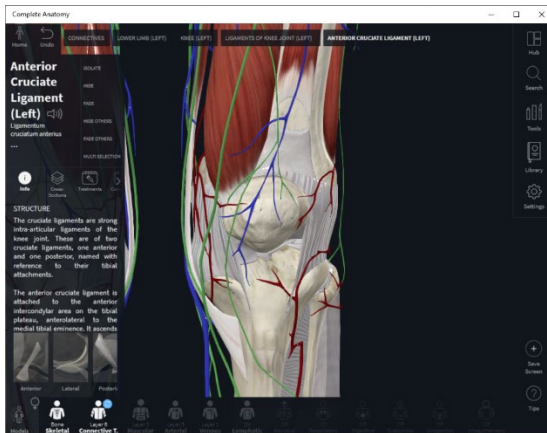
"validated instrument" burnout residents

Part 5: **COOL PICTURES! ENHANCING YOUR PRESENTATIONS WITH IMAGES**

e-Anatomy: Connect to the body region of interest, then use your mouse-wheel to roll through layers of MRI and CT images. Very popular with radiologists and surgeons as a teaching tool.



Complete Anatomy: An app that provides 3D modelling with structure-specific innervation and arterial supply. It allows users to view body systems, add layers, explore physiological features, and range of motion. Tools include; cutting, labeling, bone spurs, screen recordings, and quiz creation.



Part 6: STAYING CURRENT – CME & JOURNAL TRACKING RESOURCES

STAT+

[Newsletters and podcasts](#) providing stories on the technologies, personalities, and political forces driving changes in the life science and human health industries.

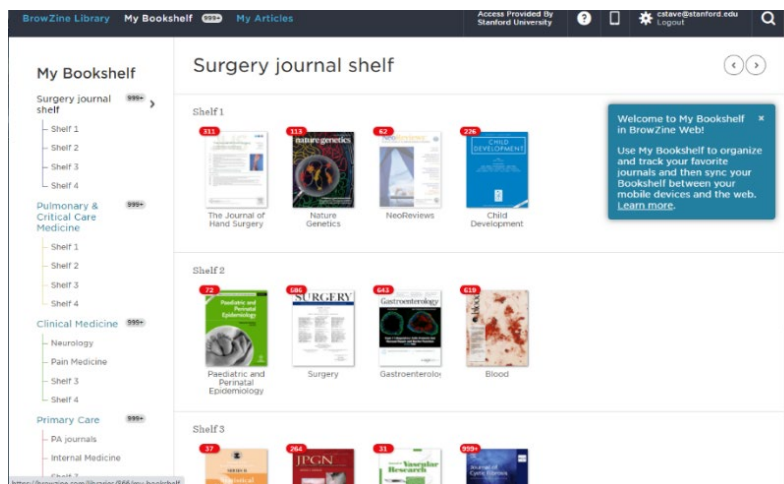
BOARDVITALS

[Exam preparation](#)

AUDIODIGEST

[AudioDigest](#) CME/CE and Maintenance of Certification for medical professionals.

BROWZINE: [Instructions for downloading](#) Instructions for downloading. Find, read, and monitor thousands of scholarly journals available from your university or college library. Browzine covers all academic disciplines, not just biomedicine!



CONTACT INFORMATION:

Christopher Stave, MLS
Graduate/Clinical Education Librarian
Lane Medical Library, Stanford Medicine
cstave@stanford.edu