

2021 Frontiers in Cardiovascular Science Virtual Series

Please see below for information regarding our next speaker, the corresponding [Zoom](#) access link and password.
We encourage you to attend and have a lively Q&A discussion.
Questions? Please email [Francesca Tongco](mailto:Francesca.Tongco)



January 5, 2021

[ÅSA GUSTAFSSON, PHD](#)

Professor, Skaggs School of Pharmacy and Pharmaceutical Sciences, Department of Pharmacology, UCSD School of Medicine

1 PM - 2 PM via [Zoom](#) , Password: **012021**

Add to Calendar: [Outlook](#) | [Google](#) | [Apple](#)



February 23, 2021

[NAOMI CHESLER, PHD](#)

Professor of Biomedical Engineering and Director of the Edwards Lifesciences Center for Advanced Cardiovascular Technology, UCI Samueli School of Engineering

1 PM - 2 PM via [Zoom](#) , Password: **022021**

Add to Calendar: [Outlook](#) | [Google](#) | [Apple](#)



January 12, 2021

[MICHAEL REGNIER, PHD](#)

Director, UW Center for Translational Muscle Research, and Professor of Bioengineering, School of Medicine & College of Engineering, University of Washington

1 PM - 2 PM via [Zoom](#) , Password: **012021**

Add to Calendar: [Outlook](#) | [Google](#) | [Apple](#)



March 2, 2021

[SUMANTH D. PRABHU, MD](#)

Professor of Medicine, Mary G. Waters Chair of Cardiovascular Medicine, and Director of the Division of Cardiovascular Disease, University of Alabama at Birmingham

1 PM - 2 PM via [Zoom](#) , Password: **032021**

Add to Calendar: [Outlook](#) | [Google](#) | [Apple](#)



January 19, 2021

[JOAN HELLER BROWN, PHD](#)

Distinguished Professor and Chair, Department of Pharmacology, UCSD School of Medicine

1 PM - 2 PM via [Zoom](#) , Password: **012021**

Add to Calendar: [Outlook](#) | [Google](#) | [Apple](#)



March 9, 2021

[STAVROS G. DRAKOS, MD, PHD](#)

Professor of Medicine & Nora Eccles Treadwell Scholar, Division of Cardiology Research Director, Co-Chief of Heart Failure & Transplant, and Medical Director of Mechanical Circulatory Support, Nora Eccles Harrison Cardiovascular Research and Training, University of Utah

1 PM - 2 PM via [Zoom](#) , Password: **032021**

Add to Calendar: [Outlook](#) | [Google](#) | [Apple](#)



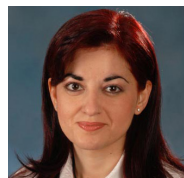
January 26, 2021

[TEJAL DESAI, PHD](#)

Department Chair and Professor, Department of Bioengineering and Therapeutic Sciences, UCSF School of Pharmacy

12 PM - 1 PM via [Zoom](#) , Password: **012021**

Add to Calendar: [Outlook](#) | [Google](#) | [Apple](#)



March 16, 2021

[AIKATERINI KONTROGIANNI-KONSTANTOPOULOS, PHD](#)

Professor of Biochemistry and Molecular Biology, Director of Interdisciplinary Training Program in Muscle Biology, Marlene and Stewart Greenebaum Comprehensive Cancer Center, University of Maryland School of Medicine

1 PM - 2 PM via [Zoom](#) , Password: **032021**

Add to Calendar: [Outlook](#) | [Google](#) | [Apple](#)



February 2, 2021

[CATHERINE BOILEAU, PHARM.D., PH.D](#)

Chair of the Genetics Department, Bichat Hospital

12 PM - 1 PM via [Zoom](#) Password: **022021**

Add to Calendar: [Outlook](#) | [Google](#) | [Apple](#)



March 23, 2021

[CHARLES C. HONG, MD, PHD](#)

Dr. Melvin Sharoky Professor of Medicine and Director of Cardiology Research, University of Maryland School of Medicine

1 PM - 2 PM via [Zoom](#) , Password: **032021**

Add to Calendar: [Outlook](#) | [Google](#) | [Apple](#)



February 9, 2021

[KATHERINE YUTZEY, PHD](#)

Professor of Molecular Cardiovascular Biology, The Heart Institute, Cincinnati Children's Medical Center, Cincinnati Children's Hospital

1 PM - 2 PM via [Zoom](#) , Password: **022021**

Add to Calendar: [Outlook](#) | [Google](#) | [Apple](#)



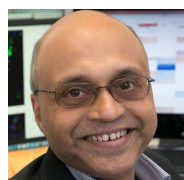
February 16, 2021

[HANNAH VALANTINE, MD, MRCP](#)

Professor of Medicine, Division of Cardiovascular Medicine and Senior Associate Dean for Diversity and Faculty Development, Stanford University School of Medicine

1 PM - 2 PM via [Zoom](#) , Password: **022021**

Add to Calendar: [Outlook](#) | [Google](#) | [Apple](#)



March 30, 2021

[ARIUN DEB, MD](#)

Professor of Cardiology; Molecular, Cell and Developmental Biology; and Director of the UCLA Cardiovascular Medicine Research Theme, UCLA

1 PM - 2 PM via [Zoom](#) , Password: **032021**

Add to Calendar: [Outlook](#) | [Google](#) | [Apple](#)

Host: Joseph C. Wu, MD, PhD
Email: joewu@stanford.edu

Stanford |  **Cardiovascular
Institute**

Additional Information & References:
[Stanford CVI](#)
[Frontiers in Cardiovascular Science](#)
[Archived Frontiers Seminar Videos](#)