



**STANFORD**  
**MATERNAL & CHILD HEALTH**  
**RESEARCH INSTITUTE**



# ANNUAL REPORT **FY 2021**

ADVANCING RESEARCH IN MATERNAL AND CHILD HEALTH



## Advancing research to solve the greatest health challenges facing pregnant women and children

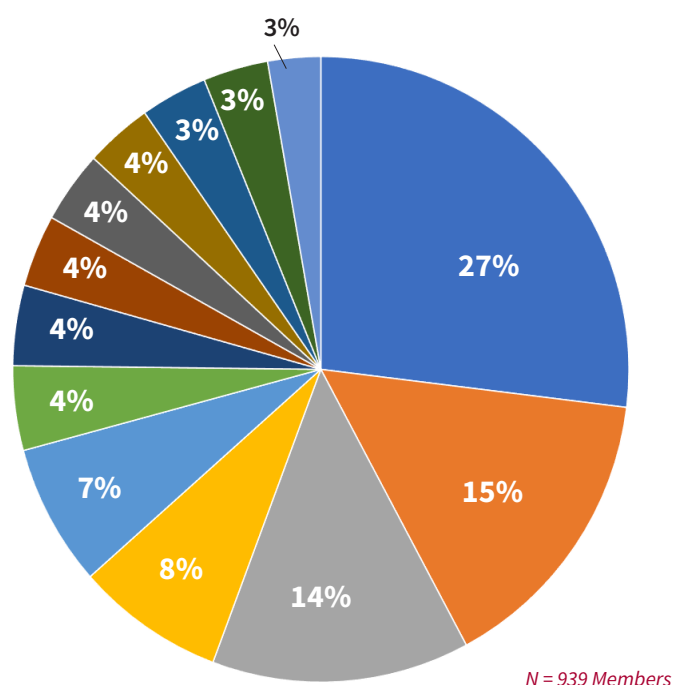
The Stanford Maternal and Child Health Research Institute (MCHRI) accelerates Stanford discoveries to improve the health of pregnant women and children by fostering transdisciplinary research in the pre-clinical, clinical, and basic sciences.

### MCHRI's strategic goals are to:

- Focus Stanford's intellectual talent on solving the greatest health challenges facing expectant mothers and children
- Increase the number of future academic leaders dedicated to these problems
- Accelerate innovative research to make transformational discoveries
- Enable the translation of our discoveries into action
- Promote maternal and pediatric health and well-being, nationally and globally

## OUR COMMUNITY

FY21 MCHRI Membership by Department/Schools

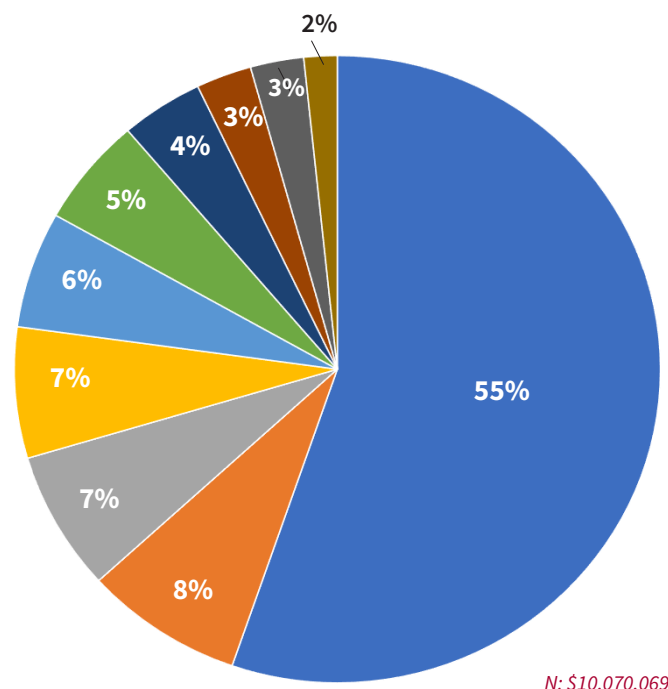


- |                                    |                                   |
|------------------------------------|-----------------------------------|
| ■ Pediatrics                       | ■ School of Engineering           |
| ■ Other Schools/Depts.             | ■ Radiology                       |
| ■ Medicine                         | ■ School of Humanities & Sciences |
| ■ Psychiatry & Behavioral Sciences | ■ Obstetrics & Gynecology         |
| ■ Basic Science Depts.             | ■ Surgery                         |

Other Schools/Depts: Cardiothoracic Surgery; Cardiovascular Institute; Dermatology; Emergency Medicine; Epidemiology & Population Health; Graduate School of Education; Health Research & Policy; Institute for Immunity, Transplantation, & Infection; Institute for Stem Cell Biology & Regenerative Medicine; Neurosurgery; Ophthalmology; Orthopaedic Surgery; Otolaryngology; School of Earth, Energy & Environmental Sciences; School of Law; Sociology; Urology

## FUNDING OVERVIEW

FY21 Total Funding Awarded by Department



- |   |                                    |
|---|------------------------------------|
| ■ Pediatrics                                    | ■ Psychiatry & Behavioral Sciences |
| ■ Obstetrics & Gynecology                       | ■ School of Engineering            |
| ■ Basic Science Depts.                          | ■ School of Humanities & Sciences  |
| ■ Anesthesiology, Perioperative & Pain Medicine | ■ Other Schools/Depts.             |
| ■ Medicine                                      | ■ Neurosurgery                     |

Other Schools/Depts: Orthopaedic Surgery; Pathology; Neurology; School of Earth, Energy, & Environmental Sciences; Emergency Medicine; Ophthalmology; Otolaryngology

# HIGHLIGHTS OF 2020-2021

Awarded **127 new grants** for maternal and child health research across the University, for a total of

## \$10,070,069

Provided biostatistical support to **180 projects** leading to  
**27 NIH GRANT SUBMISSIONS**  
through **MCHRI-funded partner, Quantitative Sciences Unit.**

MCHRI membership increased by **17%** for a total of **939 MEMBERS**



Stanford Medicine served as a test site for Pfizer's nationwide COVID-19 vaccine trial in children under 12, supported by

### MCHRI Clinical Research Coordinators

MCHRI established two new DE&I initiatives:

- Research on the Structural Racism, Social Injustice and Health Disparities in Maternal and Child Health Pilot Grants
- DRIVE (Diversity, Respect, and Inclusion are Vital for Excellence) in Research Pipeline for Stanford underrepresented minority (URM) and first generation and low income (FLI) undergraduates to work with faculty mentors on summer research projects.



The **Clinical Research Support Office** received **93 new clinical and translational research study submissions** through its new hospital-wide Clinical Research Intake Portal for Stanford Children's Health, representing **32 School of Medicine Departments and Divisions.**



MCHRI launched the inaugural **Drug & Device Development (D<sup>3</sup>) Training Program** to support Stanford investigators in developing therapeutic and diagnostic devices to benefit mothers and children with **6 industry partners**



“

We have used the MCHRI Clinical Research Coordinators for several studies and have very much appreciated their professionalism and diligence. It is wonderful to have these services readily available to us in order to facilitate prospective research.

*Alan Schroeder, MD  
Pediatrics (Emergency Medicine & Critical Care)*

## Clinical Research Coordinator Services

The **Clinical Research Core** consists of experienced maternal and pediatric-focused clinical research coordinators (CRCs) who support a wide variety of research studies and trials.



75+

Studies supported by MCHRI CRCs



24%

NIH-funded



13%

Industry-funded



63%

Other, including PI-Initiated, Foundation, Internal Grant, and Non-Federal

### MCHRI jumpstarts two COVID-19 research studies

in children supporting our PIs to improve global health initiatives

### Pediatric Research Immune Network on SARS-CoV-2 and MIS-C (PRISM)

A study to understand the clinical spectrum of illness and long-term outcomes of children with COVID-19.

### Pfizer Pediatric COVID-19 Vaccine Trial, Phase 1 and 2/3

A study to evaluate the SARS-CoV-2 RNA vaccine against COVID-19 in healthy infants and children.

### MCHRI expands clinical research coordinator services

Increased flexibility to assist PIs with hiring and onboarding division-dedicated clinical research coordinators. PIs or Divisions can select one of MCHRI's hiring models:

- **Hourly Model:** CRCs support multiple PIs on hourly basis
- **Part-time Model:** CRCs support single or multiple PIs
- **Full-time Model:** MCHRI hires new CRC dedicated to PI or Division

# Lucile Salter Packard Children's Hospital Stanford



*Ang Homonay Photography courtesy of the Lucile Packard Foundation for Children's Health*

## Streamlining Clinical Research Operations

The **Clinical Research Support Office (CRSO)** serves as a central resource for operational, informatics, regulatory, and other support for conducting studies at Stanford Children's Health (SCH).



### Enhanced Research Functionality in the Electronic Medical Record (EMR)

- Provided remote access to SCH EMR (Epic) for 150+ sponsor monitors in FY21
- Enabled clinical research staff functionalities in Epic (notes, order entry, billing review, notifications)
- Facilitated subject recruitment to clinical trials through Epic patient portal (MyChart)
- Partnered with Hospital Privacy to develop an adjudication process for research staff access to confidential content in SCH Epic.



### Supported Hospital Research Operations

- Implemented Clinical Research Intake Portal for SCH, enabling 93 new studies representing 32 School of Medicine (SoM) Departments/Divisions
- Partnered with SCH Process Improvement and Investigational Drug Services (IDS) teams to develop new tools and improve workflows for IDS study budgeting and initiation



### Provided Training & Education for School of Medicine Staff

- Deployed SCH safety, infection prevention, emergency preparedness, and communication training to 140+ clinical research staff
- Developed guidance for study budgeting and research documentation in Epic
- Created 15+ Epic training videos and tip sheets

Education & Training

# Building a Research Community



PC: Chris Montgomery/Unsplash

**3rd Annual MCHRI Symposium features the latest science and innovation in maternal and child health research**



## Virtual Symposium

15 Speakers, 81 Posters

The Education Committee organized the third annual research symposium as an online event, drawing over 800 virtual participants throughout the day and featuring timely topics, from stem cell and gene therapy to school-age learning in COVID-19.



## Keynote Speaker

David A. Williams, MD

David A. Williams, MD, Senior Vice President and Chief Scientific Officer at Boston Children's Hospital, delivered his keynote address entitled, "Flipping the Switch on Fetal Globin in Sickle Cell Disease: From GWAS to Therapeutics" at the annual symposium.



## Visionary Leadership Award

Fernando Mendoza, MD, MPH

Fernando Mendoza, MD, MPH, Emeritus Professor of Pediatrics and former Associate Dean of Minority Advising and Programs for the Office of Student Affairs, received the 2021 MCHRI Visionary Leadership Award for his lifelong work in minority and immigrant child health and workforce diversity.

## MCHRI Drug and Device Development (D<sup>3</sup>) Training Program

Through the support of a generous philanthropic donation, MCHRI launched the inaugural Drug & Device Development (D<sup>3</sup>) Training Program in 2020 to support Stanford investigators in developing therapeutic and diagnostic devices to benefit mothers and children.

Led by Faculty Director, Gary Shaw, DrPH, and Director of Innovation and Development, Grant Wells, MS, the training program provided individuals with an experience and education in the development of novel therapeutics, medical devices, and diagnostics in an industry environment.



## Maternal and Child Health Seminar Series

MCHRI hosted 11 virtual seminars, highlighting more than 30 different speakers and featuring today's most pressing topics in maternal and child health, including:

- Adolescent and Young Adult Health
- Childhood Cancers and Survivorship
- Global Health and Infectious Diseases
- Maternal-Fetal Precision Medicine
- Pediatric Critical Care and Anesthesiology
- Social Policy and Population Health Sciences



PC: Rawpixel

## Uytengsu-Hamilton 22q11 Neuropsychiatry Research Networking Meeting

MCHRI hosted the 22q11 Neuropsychiatry Research and Networking Meeting in March 2021. The event aimed to highlight the range of current neuroscience and mental health research in 22q11 deletion syndrome at Stanford.

The meeting brought together researchers from a broad range of disciplines across campus, as well as international speakers, and created a forum for knowledge exchange and new connections, cultivating opportunities for new collaborations and research ideas.

Diversity Initiatives

# Research Through Diverse Perspectives

PC: Rodnae Productions/Pexels

“

*My team and I are fortunate to be among the first round of recipients of MCHRI's new health disparities grants program. This funding has facilitated the development of a new partnership with the Food Equality Initiative—a community-based organization that has been working to improve health and end hunger in individuals diagnosed with food allergies by providing food as medicine.*

*R. Sharon Chinthrajah, MD  
Medicine (Pulmonary, Allergy & Critical Care  
Medicine) and Pediatrics (Immunology and Allergy)*

## **MCHRI provides pilot grants for research on Structural Racism, Social Injustice and Health Disparities in Maternal and Child Health**

MCHRI launched the Structural Racism, Social Injustice and Health Disparities in Maternal and Child Health Pilot Awards in 2020 and awarded ten pilot grants for a total of \$350,000.

This funding mechanism encourages researchers to focus on reasons or drivers of health disparities, and supports action-oriented strategies to promote equity and improve health outcomes in diverse communities through policy or programmatic changes and innovations.

Investigators engage with community partners as part of their research to promote health equity and addressing the impact of structural racism and social injustice in maternal and child health.

*See pages 14-15 for a list of 2021 awarded projects.*

## MCHRI welcomes 10 students to the DRIVE (Diversity, Respect, and Inclusion are Vital for Excellence) in Research Pipeline program

In 2021, MCHRI launched the DRIVE (Diversity, Respect, and Inclusion are Vital for Excellence) Research Pipeline Award, a summer research internship program for underrepresented minorities (URM) and first-generation and/or low income (FLI) Stanford undergraduate students. Ten students were each matched with an established faculty mentor.

Students worked on maternal and child health relevant research projects and attended weekly lectures by mentors who shared their research and career journeys.



## Students present their projects and share overall learning experiences at the Final Student Presentations on August 25

“

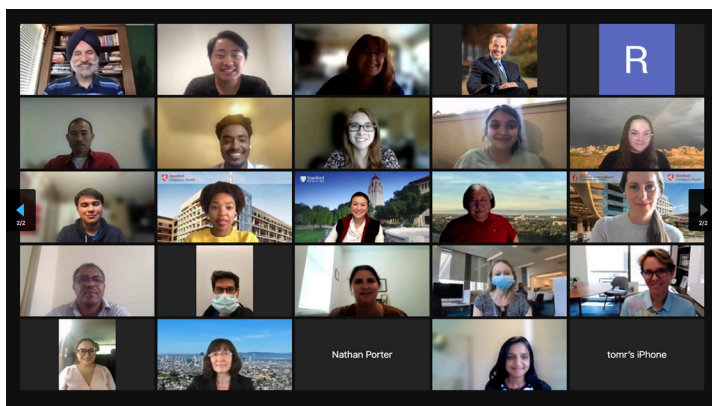
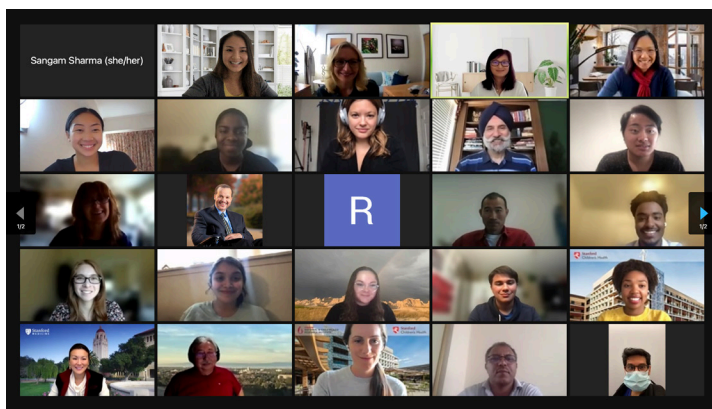
*The students not only left an incredible mark on our faculty, but also our departments and the School of Medicine with the work that they contributed and really driving forward the merits of looking at health disparities. They're the future of what we want to see in research and what's driving us, hence the name of this research program that they are driving for diversity, respect, and inclusion in medical research.*

**- Carmin Powell, MD,  
Pediatrics and Co-Founder of DRIVE in Research Pipeline**

*The program provides a wonderful opportunity for students from backgrounds underrepresented in medical science to gain valuable research experience at a critical stage in their career. The hope is that such experience will inspire students to pursue any number of pathways for careers in Medicine and Medicine and Science.*

**- Eric Sibley, MD, PhD  
Pediatrics and Co-Founder of DRIVE in Research Pipeline**

*See page 17 for a list of 2021 DRIVE students and projects.*



Grants & Programs

# Investing in People & Innovation

“

*MCHRI support is integral for our research aiming at developing new therapeutic strategies for patients with Gaucher disease. We strongly believe that our research will provide the proof of concept of a one-time therapy even for the most severe Gaucher disease forms affecting young children. Moreover, this scholarship will allow me to generate additional discoveries that will further the field and our understanding of Gaucher disease therapies.*

*Marc Francois Philippe Gastou, MS, PhD  
Pediatrics (Medical Genetics)*



**Thank you to our Reviewers!**

We are grateful for our dedicated community of expert Scientific Reviewers who enable the Institute to invest in the most promising science and investigators!

## Faculty Scholars

### \$100K/year for three to five years

#### Program Co-Chairs

- Harvey Cohen, MD - Professor, Pediatrics
- David K. Stevenson, MD - Professor, Pediatrics

**Danton Char, MD, MAS**, Laurie Kraus Lacob Faculty Scholar in Pediatric Translational Medicine  
Associate Professor, Anesthesiology, Perioperative & Pain Medicine; Study Title: Integration of Pediatric Palliative Care and Cardiac Ventricular Assist Device Care for Children

**Sushma Reddy, MD**, Anne T. and Robert M. Bass Faculty Scholar Assistant Professor, Pediatrics (Cardiology); Study Title: A Non-invasive Signature of Myocardial Signaling in Children with Single Ventricle Heart Failure

**Bo Yu, MD, MS**, Yamazaki and Jerry Yang Faculty Scholar in Pediatric Translational Medicine  
Assistant Professor, Obstetrics & Gynecology (Reproductive Endocrinology & Infertility); Study Title: Non-Invasive Preconceptional Chromosomal Diagnosis in Living Sperm

## Transdisciplinary Initiatives Program

### \$100K/year for two years

#### Study Title: In Vivo Evaluation of Short Bowel Function Using Soft Bioelectronic Sensors

PI: James Dunn, MD, PhD, School of Medicine (Surgery)  
Co-PI: Zhenan Bao, PhD, School of Engineering (Chemical Engineering)

#### Study Title: AI to Monitor Maternal and Child Health Globally in Near Real Time and At an Extremely High Spatial Resolution: A Proof-Of-Concept Study

PI: Pascal Geldsetzer, MD, PhD, MPH, School of Medicine (Medicine); Co-PIs: Marshall Burke, PhD, School of Earth, Energy & Environmental Sciences (Earth System Science); Gary Darmstadt, MD, MS, School of Medicine (Pediatrics); David Lobell, PhD, School of Earth, Energy & Environmental Sciences (Earth System Science); Stefano Ermon, PhD, School of Engineering (Computer Science)

#### Study Title: Data-Driven Approach to Personalized Type 1 Diabetes for Underserved Populations Facilitated by Continuous Glucose Monitor Data and Telehealth: Scaling Beyond Lucile Packard Children's Hospital

PI: Ramesh Johari, PhD, School of Engineering (Management Science & Engineering); Co-PIs: David Maahs, MD, PhD, School of Medicine (Pediatrics); Priya Prahalad, MD, School of Medicine (Pediatrics); David Scheinker, PhD, School of Medicine (Pediatrics)

#### Study Title: FocusLab

PI: Anthony Norcia, PhD, School of Humanities and Sciences (Psychology); Co-PIs: Tawna Roberts, OD, PhD, School of Medicine (Ophthalmology); Euna Koo, MD, School of Medicine (Ophthalmology); Scott R. Lambert, School of Medicine (Ophthalmology); Ann Shue, MD, School of Medicine (Ophthalmology); Consultant: Christina Hecht, PhD; Ken Hecht, LLB

#### Study Title: Examining Communication and Marketing Strategies to Reduce Food Insecurity among Latinx Children in California's San Joaquin Valley

PI: Anisha Patel, MD, MSPH, MSHS, School of Medicine (Pediatrics); Co-PI: Szu-Chi Huang, MA, PhD, Graduate School of Business (Marketing)

#### Study Title: Using Maternal Metabolomic Profiles to Determine Gestational Age and Risk of Preterm Birth and Preeclampsia in Low Resource Settings

PI: Victoria Ward, MD, School of Medicine (Pediatrics)  
Co-PIs: David K. Stevenson, MD, School of Medicine (Pediatrics); Andrea Montanari, PhD, School of Engineering (Electrical Engineering and Statistics); Mohsen Bayati, PhD, MSc, Graduate School of Business (Operations, Information & Technology); Gary L. Darmstadt, MD, MS, School of Medicine (Pediatrics); Karl G. Sylvester, MD, School of Medicine (Surgery)

## Clinical (MD) Trainee

### Up to 100% salary/benefits support for up to two years

#### Program Co-Chairs

- Daniel Bernstein, MD - Professor, Pediatrics
- Gerald Grant, MD, FACS - Professor, Neurosurgery

#### Haejun Ahn, MD

Ernest and Amelia Gallo Endowed Postdoctoral Fellow  
Clinical Fellow, Pediatrics (Nephrology)  
Study Title: Application of a Novel Acute Kidney Injury Severity Score in Neonates with Hypoxic Ischemic Encephalopathy

#### Anne Berens, MD

Ernest and Amelia Gallo Endowed Postdoctoral Fellow  
Clinical Fellow, Pediatrics (Developmental-Behavioral Pediatrics)  
Study Title: Early Life Stress as a Risk Factor for Attention Deficit Hyperactivity Disorder in Adolescence: Mechanistic Pathways and Clinical Implications

#### Bhavika Chopuri, MD

The Stephen Bechtel Endowed Fellow in Pediatric Translational Medicine Fellow  
Clinical Fellow Pediatrics (Pediatric Gastroenterology)  
Study Title: The ENGAGE Curriculum: Evidence Based Non-Pharmacologic Gastroenterology Curriculum

### John Feister, MD

Stanford Maternal & Child Health Research Institute Fellow  
Clinical Fellow, Pediatrics (Neonatal & Developmental Medicine)  
Study Title: The Impact of Paid Family Leave on Health Outcomes of Very Low Birthweight Infants in California

### Neha Joshi, MD

Ernest and Amelia Gallo Endowed Postdoctoral Fellow  
Clinical Fellow, Pediatrics (Hospital Medicine)  
Study Title: Towards Identifying Optimal NICU Admission Criteria for Late Preterm Infant

### Lauren Kushner, MD

Tashia and John Morgridge Endowed Postdoctoral Fellow  
Clinical Fellow, Pediatrics (Infectious Diseases)  
Study Title: Application of the FUNGAL CELL-FREE DNA (cfDNA) Polymerase Chain Reaction (PCR) Assay to Invasive Fungal Disease Evaluation in the Neutropenic Pediatric Oncology and Stem Cell Transplant Population

### Lori Lee, PhD, MD

Tashia and John Morgridge Endowed Postdoctoral Fellow  
Clinical Fellow, Pediatrics (Pulmonary Medicine)  
Study Title: Role of CFTR Mutations in Adaptive Immunity

### Talia Lester, MD

Ernest and Amelia Gallo Endowed Postdoctoral Fellow  
Clinical Fellow, Pediatrics (Developmental-Behavioral Pediatrics)  
Study Title: Primary Care Provider Use of Evidence-based Treatments for Anxiety and Depression

### Sara Patrizi, DO

Ernest and Amelia Gallo Endowed Postdoctoral Fellow  
Clinical Fellow, Pediatrics (Pediatric Rheumatology)  
Study Title: The Effects of Extra-Renal Manifestations at Diagnosis on Renal Response in a Pediatric Systemic Lupus Erythematosus Cohort

### Valerie Peicher, MD

Tashia and John Morgridge Endowed Postdoctoral Fellow  
Clinical Fellow, Pediatrics (General Pediatrics)  
Study Title: Si Se Puede: Medicaid for All and Measurable Health Outcomes

### Maria Peinado-Fabregat, MD, MS

Ernest and Amelia Gallo Endowed Postdoctoral Fellow  
Clinical Fellow, Pediatrics (General Pediatrics)  
Study Title: Prevalence and Nutritional Risk Factors Associated with Obesity Among Children with Medical Complexity

### Rameshwar Rao, MD, PhD

Anne T. and Robert M. Bass Endowed Fellow  
Clinical Fellow, Pediatrics (Hematology/Oncology)  
Study Title: Bioengineering Osteosarcoma

“

*The MCHRI postdoctoral support allows me to investigate possible mechanisms that underpin symptoms in Avoidant/Restrictive Food Intake Disorder (ARFID), a type of eating disorder which onsets in childhood and can lead to psychosocial impairment and severe medical sequelae. This grant enables me to collect important pilot data characterizing interoceptive processes, a potential biological marker for dysregulated eating behavior.*

Nandini Datta, PhD  
Psychiatry & Behavioral Sciences

### Cathy Tsin, MD

Tashia and John Morgridge Endowed Postdoctoral Fellow  
Clinical Fellow, Pediatrics (Allergy, Immunology & Rheumatology)  
Study Title: Thrombotic Microangiopathic Changes in Kidney Biopsies of Childhood-Onset Systemic Lupus Erythematosus Patients with Severe Hematologic Disturbances: A Single Center Retrospective Case Control Study

### Luisa Valenzuela Riveros, MD

Tashia and John Morgridge Endowed Postdoctoral Fellow  
Clinical Fellow, Pediatrics (Pediatric Endocrinology)  
Study Title: Trabecular Bone Score in a Healthy Pediatric Population

### Crystal Wang, MD

Paul and Yuanbi Ramsay Endowed Fellow  
Clinical Fellow, Pediatrics (Hematology/Oncology)  
Study Title: Characterizing the Relationship Between Cellular Adhesion and Quiescence in Central Nervous System Involvement of B-cell ALL

### Lauren Wozniak, MD, MPH

Mary Gallo Endowed Postdoctoral Fellow in Adolescent Medicine  
Clinical Fellow, Pediatrics (Adolescent Medicine)  
Study Title: Disparities in Hospitalizations for Medical Stabilization of Adolescent and Young Adult Patients with Eating Disorders in California

**Xixi Zhao, MD**

Rosa A. Wann and Marjorie Shannon Fellow  
Clinical Fellow, Pediatrics (Nephrology)  
Study Title: Using Machine Learning to Predict Intradialytic Hypotension in Children with Kidney Failure Requiring Hemodialysis

**Postdoctoral Support**

**Up to \$80K/year for up to two years**

*Requires a commitment from the mentor of \$40K for year 2*

*Program Panel Chairs*

- Jeffrey A. Feinstein, MD, MPH - Professor, Pediatrics
- Julien Sage, PhD - Professor, Pediatrics
- Kathleen Sakamoto, MD, PhD - Professor, Pediatrics
- Virginia Winn, MD, PhD - Associate Professor, Obstetrics & Gynecology

**Dulguun Amgalan, PhD**

Postdoctoral Fellow, Genetics  
Study Title: Regulatory Maps of Endothelial Cell Differentiation to Connect Congenital Heart Disease Risk Variants to Target Genes

**Nandini Datta, PhD**

Postdoctoral Fellow, Psychiatry & Behavioral Sciences  
Study Title: Exploration of Interoceptive Capabilities in Avoidant/Restrictive Food Intake Disorder

**Dorien Feyaerts, PhD**

Postdoctoral Research Fellow, Anesthesiology, Perioperative & Pain Medicine  
Study Title: Cross-Tissue Assessment of Local and Peripheral Immune Determinants of Preeclampsia

**Connie Fung, PhD**

Postdoctoral Fellow, Pathology  
Study Title: The Role of Intestinal Taste Cells in Regulating Parasite Expulsion from the Gut

**Marc Francois Philippe Gastou, MS, PhD**

Postdoctoral Fellow, Pediatrics (Medical Genetics)  
Study Title: Combining Genetic Substrate Reduction with Targeted-Glucocerebrosidase Addition in Human Hematopoietic Stem Cells: A Universal Strategy for Genetic Correction Gaucher Disease

**Dongyun Jiang, PhD**

Postdoctoral Fellow, Neurobiology  
Study Title: Investigating Activity-Dependent Protein Synthesis in Fragile X Mice Using a Novel Chemogenetic Approach

**Nicole Krentz, PhD**

Postdoctoral Research Fellow, Pediatrics (Endocrinology)  
Study Title: The Role of Ras Responsive Element Binding Protein 1 (RREB1) in Adipocyte Development and Function

**Jiannan Li, PhD**

Postdoctoral Research Fellow, Orthopaedic Surgery  
Study Title: Integration of Stem Cell Therapy with a Bioactive Hybrid Scaffold Adaptable to Fetal Growth for Improved Prenatal Treatment of Spina Bifida

**Li Li, PhD, MS**

Postdoctoral Fellow, Pediatrics (Neonatal & Developmental Medicine)  
Study Title: Deciphering Hypoxic White Matter Injury of Prematurity Using Human Stem Cell-derived Oligodendrocytes

**Rihui Li, PhD**

Postdoctoral Research Fellow, Psychiatry (Interdisciplinary Brain Sciences Research)  
Study Title: Uncovering Neurobiological Signatures of Social Interaction Dysfunction in Children with Fragile X Syndrome

**Mahalakshmi Ramamurthy, MD**

Postdoctoral Fellow, Pediatrics (Developmental Behavioral)  
Study Title: Investigating the Causal Role of Attention in Dyslexia

**Maria Caterina Rotiroti, PhD**

Postdoctoral Research Fellow, Pediatrics (Hematology/Oncology)  
Study Title: Potentiating CAR T Cell Efficacy Through Enhancement of Proximal T-Cell Signaling

**Bhagyesh Sarode, PhD**

Postdoctoral Research Fellow, Chemical & Systems Biology  
Study Title: A Transposon-Based Approach for Optogenetic Engineering

**Xiaoran Sun, PhD**

Postdoctoral Fellow, Pediatrics (General Pediatrics)  
Study Title: Examining Implications of Parent-Adolescent Digital Communication for their Relationship Quality and Adolescent Mental Health



PC: William Fortunato/Pexels

### Pilot Grant Programs \$35K for one year

#### Program Co-Chairs

- Paul C. Grimm, MD - Professor, Pediatrics
- Gary M. Shaw, DrPH - Professor, Pediatrics

### New Idea Grants

#### Jason Andrews, MD, SM

Associate Professor, Medicine (Infectious Diseases)  
Study Title: Development of a novel point-of-care molecular assay for G6PD deficiency

#### Rosa Bacchetta, MD

Associate Professor, Pediatrics (Stem Cell Transplantation)  
Study Title: Revealing the Origin of Autoreactive T cells in IPEX Patients

#### Carol Conrad, MD

Associate Professor, Pediatrics (Pulmonary Medicine)  
Study Title: Discovery of Biomarker Signature for Graft Failure in Pediatric Lung Transplantation

#### Calvin Kuo, MD, PhD

Professor, Medicine (Hematology)  
Study Title: Soil and Seed: An Endometrial Organoid Model of Human Implantation

#### Kevin Shea, MD

Professor, Orthopaedic Surgery  
Study Title: Development of Pediatric Meniscus Tissue - Age-related Changes in MR Quantitative Parameters, Mechanical Properties, and Biochemical Composition

#### Xinnan Wang, MD, PhD

Associate Professor, Neurosurgery  
Study Title: Targeting a Novel Mitochondrial Redox Pathway for Friedreich's Ataxia

### Early Career Grants

#### Bereketeab Haileselassie, MD, MHS

Assistant Professor, Pediatrics (Critical Care)  
Study Title: Understanding the Role of Altered Mitochondrial Dynamics and Extracellular Mitochondrial Content in GVHD Pathogenesis

#### Ioannis Karakikes, PhD

Assistant Professor, Cardiothoracic Surgery  
Study Title: Identification and Functional Validation of Pathogenic Noncoding Loci in Congenital Heart Disease

“

*I am extremely grateful to the MCHRI for the Pilot Grant support that has allowed us to pursue a new direction in my lab in reproductive health. Thanks to this funding, we have been able to develop a new organoid culture model of the uterine lining or endometrium to pursue our goal of better understanding maternal-embryo interactions during implantation.*

*Calvin Kuo, MD, PhD  
Medicine (Hematology)*

#### Anca Pasca, MD

Assistant Professor, Pediatrics (Neonatal & Developmental Medicine)  
Study Title: Understanding the Biology Underlying Neurodevelopmental Disorders in Trisomy 18

#### Laura Prolo, MD, PhD

Assistant Professor, Neurosurgery  
Study Title: Integrated Characterization of the Genomic and Methylomic Landscape of Pediatric High-Grade Gliomas to Identify Determinants of Treatment Response and Outcome

### Structural Racism, Social Injustice and Health Disparities Pilot Grants \$35K for one year

#### Program Co-Chairs

- Lisa Chamberlain, MD, MPH - Professor, Pediatrics
- Anisha Patel, MD, MSPH, MSHS - Associate Professor, Pediatrics

#### Ananta Addala, DO, MPH

Instructor, Pediatrics (Endocrinology & Diabetes)  
Study Title: Reducing Disparities in Pediatric Diabetes: Building the Evidence Base to Inform Effective Diabetes Technology Interventions in Underrepresented Minorities

#### Kanwaljeet S. Anand, MBBS, D.Phil.

Professor, Anesthesiology, Perioperative & Pain Medicine and Pediatrics (Critical Care)  
Study Title: A Biopsychosocial Program to Ameliorate the Effects of Perceived Stress and Discrimination on Health Outcomes in Socially Disadvantaged Children

**Natali Aziz, MD, MS**

Clinical Associate Professor, Obstetrics & Gynecology (Maternal-Fetal Medicine)

Study Title: COVID-19 Household Transmission and Social Determinants of Health in Pregnancy

**Erica Pasciullo Cahill, MD, MS**

Clinical Assistant Professor, Obstetrics & Gynecology (Gynecology & Family Planning)

Study Title: Patient Evaluation of an Anti-Racism Perinatal Tool

**R. Sharon Chinthrajah, MD**

Clinical Associate Professor, Medicine (Pulmonary, Allergy & Critical Care Medicine) and Pediatrics (Allergy & Clinical Immunology)

Study Title: Improving Racial Diversity in our Food Allergy Programs

**Michael C. Frank, PhD**

Associate Professor, Psychology

Study Title: Measuring Children's Early Vocabulary Using Large Scale Data from Diverse Families

**Bonnie Halpern-Felsher, PhD**

Professor, Pediatrics (Adolescent Medicine)

Study Title: Youth Perceptions of the Racialization of Cannabis: Implications for Prevention and Policies

**Stephanie Leonard, MS, PhD**

Instructor, Obstetrics & Gynecology (Maternal Fetal Medicine)

Study Title: Identifying Opportunities to Improve Health Inequities for Pregnant People using National Claims Data

**Priya Prahalad, MD, PhD**

Clinical Assistant Professor, Pediatrics (Endocrinology & Diabetes)

Study Title: Telehealth Delivery to Change the Paradigm of Care Delivery in Children with Type 1 Diabetes

**Sejal Shah, MD**

Clinical Assistant Professor, Pediatrics (Endocrinology & Diabetes)

Study Title: Use of Continuous Glucose Monitors in Publicly-Insured Youth with Type 2 Diabetes - A Pilot and Feasibility Study



PC: Pixabay

**Clinician Educator**  
**\$35K for one year**

*Program Co-Chairs*

- Bertil Glader, MD, PhD - Professor, Pediatrics
- Deirdre J. Lyell, MD - Professor, Obstetrics & Gynecology

**Catherine Aftandilian, MD, MS**

Clinical Associate Professor, Pediatrics (Hematology/Oncology)

Study Title: Using Microbial Cell-Free DNA to Differentiate Infection from Inflammation in Pediatric Patients with B ALL Receiving CAR T Cell Therapy

**Anna Arroyo, MD, MPH**

Clinical Assistant Professor, Medicine (Pulmonary, Allergy & Critical Care Medicine)

Study Title: Maternal Preeclampsia and the Risk of Childhood Asthma

**William Collins, MD**

Clinical Assistant Professor, Medicine

Study Title: The Utilization of Virtual Reality Headset Games to Mitigate the Emotional Burden of Food Allergy Research Participation for Pediatric Patients and their Caregivers

**Sara Kreimer, MD**

Clinical Assistant Professor, Pediatrics (Hematology/Oncology)

Study Title: CIC-Rearranged Sarcoma: A Multi-Institutional, Retrospective, Observational Study Describing the Clinicopathologic Features, Treatments, and Outcomes of Patients <30 Years with CIC-Rearranged Sarcomas

**Sarah Lee, MD**

Clinical Assistant Professor, Neurology & Neurological Sciences

Study Title: Neuroimaging Biomarkers of Favorable Outcome after Thrombectomy in Acute Pediatric Arterial Ischemic Stroke

**Zoel Quinonez, MD**

Clinical Assistant Professor, Anesthesiology, Perioperative & Pain Medicine

Study Title: Validation of Diagnosis and Procedure Codes Available in Administrative Claims Data for Outcomes Assessment of Patients Undergoing Pulmonary Valve Repair or Replacement Surgery at Lucile Packard Children's Hospital

**Lauren Schneider, PsyD**

Clinical Associate Professor, Psychiatry & Behavioral Sciences (Child and Adolescent Psychiatry) and Pediatrics (Cardiology)

Study Title: Validation of the Stanford Pediatric Pretransplant Optimization Tool for Transplant (SPPOTT)

**Elizabeth Shepard, MD**

Clinical Associate Professor, Pediatrics (General Pediatrics)

Study Title: Gardner GOALS



### Bridge Support

**Up to \$100K/year for up to one year**

*50% support from both MCHRI & awardee's department*

#### **Jochen Profit, MD, MPH**

Associate Professor, Pediatrics (Neonatal & Developmental Medicine)

Study Title: Optimizing Perinatal Care Regionalization

#### **Suzanne Tharin, MD, PhD**

Assistant Professor, Neurosurgery

Study Title: An Evolutionarily Acquired MicroRNA Cluster Shapes Development of Mammalian Cortical Projections

### Instructor K Award Support

**Up to \$50K/year for up to two years**

*50% support from both MCHRI & awardee's department*

#### **John Hegarty, PhD**

Instructor, Psychiatry & Behavioral Sciences (Child & Adolescent Psychiatry)

Study Title: Targeting the Neurology of Restricted and Repetitive Behaviors on Children with Autism Using N-Acetylcysteine

#### **Marie Hollenhorst, MD, PhD**

Clinical Instructor, Pathology and Medicine (Hematology)

Study Title: Biochemistry of Platelet Desialylation

#### **Jennifer Ikle, MD, PhD**

Instructor, Pediatrics (Endocrinology & Diabetes)

Study Title: Training Research Leaders in Type 1 Diabetes

“

*The MCHRI Clinician Educator support has provided me with focused time and statistical resources to continue investigating maternal risk factors for childhood asthma. Additionally, this funding has been critical in helping me establish collaborations foundational to my work during my early research career.*

*Anna Arroyo, MD, MPH*

*Medicine (Pulmonary, Allergy & Critical Care Medicine)*

#### **Gayathree (Gaya) Murugappan, MD**

Instructor, Obstetrics & Gynecology (Reproductive Endocrinology & Infertility)

Study Title: Stanford Women's Reproductive Health Research Career Development Program

#### **Danielle Panelli, MD**

Instructor, Obstetrics & Gynecology (Maternal Fetal Medicine)

Study Title: Stanford Women's Reproductive Health Research Career Development Program

#### **Molly Tanenbaum, PhD**

Instructor, Pediatrics (Endocrinology & Diabetes) and Medicine (Endocrinology, Gerontology, & Metabolism)

Study Title: ONBOARD: Overcoming Barriers & Obstacles to Adopting Diabetes Devices

#### **Daniel Tawfik, MD**

Instructor, Pediatrics (Critical Care)

Study Title: Development and Validation of a Prediction Model to Address Physician Burnout

#### **Sriram Vaidyanathan, PhD**

Instructor, Pediatrics (Stem Cell Transplantation)

Study Title: A Universal Genome Editing Strategy to Develop an Airway Stem Cell Therapy for Cystic

#### **Jessie Wong, PhD**

Instructor, Pediatrics (Endocrinology & Diabetes)

Study Title: Family Matters: Optimizing Family-Based Interventions for Adolescents with Type 1 Diabetes

#### **Mollie Woodworth, PhD**

Instructor, Ophthalmology

Study Title: Development and Regeneration of Retinal Ganglion Cells in the Vertebrate Retina

## Master's Tuition Support Up to \$32,500/year for up to two years

### Heather Alva, MD

Postdoctoral Medical Fellow, Pediatrics (Hematology/Oncology)  
Master's Student in Epidemiology and Clinical Research

### Jessica R. Ansari, MD

Clinical Assistant Professor, Anesthesiology, Perioperative & Pain Medicine  
Master's Student in Epidemiology and Clinical Research

### Maria Peinado Fabregat, MD, MS

Fellow, Pediatrics (General Pediatrics)  
Master's Student in Epidemiology and Clinical Research

### John Feister, MD

Fellow, Pediatrics (Neonatal & Developmental Medicine)  
Master's Student in Health Policy

### Christina Johnson, MD

Fellow, Obstetrics & Gynecology (Maternal Fetal Medicine)  
Master's Student in Epidemiology and Clinical Research

### Danielle Panelli, MD

Instructor, Obstetrics & Gynecology (Maternal-Fetal Medicine)  
Master's Student in Epidemiology and Clinical Research

### Valerie Peicher, MD

Postdoctoral Medical Fellow, Pediatrics (General Pediatrics)  
Master's Student in Health Policy

### Zachary Smith, MD

Fellow, Pediatrics (Critical Care)  
Master's Student in Epidemiology (London School of Hygiene and Tropical Medicine)

## DRIVE (Diversity, Respect, and Inclusion are Vital for Excellence) in Research Pipeline Awards Student stipend of \$5,000

**Crystal Chidume**, Undergraduate Student in Symbolic Systems  
Faculty Mentor: Dr. Anisha Patel, Pediatrics (General Pediatrics)  
Project: Water First Intervention

**Juan Espinal-Mejia**, Undergraduate Student in Human Biology  
Faculty Mentor: Dr. Heike Daldrop-Link, Radiology (Pediatric Radiology)  
Project: Cancer Imaging Techniques Mini-Fellowship for the Underserved Students

**Camryn Franke**, Undergraduate Student in Bioengineering  
Faculty Mentor: Dr. Tanja Gruber, Pediatrics (Hematology/Oncology)  
Project: Delineating the Role and Immunogenicity of CBFA2T3-GLIS2 in Pediatric Acute Megakaryoblastic Leukemia

**Rojie Hajjar**, Undergraduate Student in Human Biology  
Faculty Mentor: Dr. William Collins, Medicine  
Project: Remote Monitoring of Respiratory Health

**Olivia Mendoza**, Undergraduate Student in Human Biology  
Faculty Mentor: Dr. Stephanie Chao, Surgery (Pediatric Surgery)  
Project: Screening for PTSD Among Children After Traumatic Injury

**Ahmed Moutwakil**, Undergraduate Student in Human Biology  
Faculty Mentor: Dr. Rishi Mediratta, Pediatrics  
Project: Newborn Health in Humanitarian Settings

**Devin Moua**, Undergraduate Student in Human Biology  
Faculty Mentor: Dr. Kanwaljeet S. Anand, Pediatrics (Critical Care)  
Project: Biomarkers for Risk and Resilience in Children of Socially Disadvantaged or Minority Families

**Monica Pena-Aguilar**, Undergraduate Student in Psychology;  
Faculty Mentor: Dr. Lee Sanders, Pediatrics (General Pediatrics)  
Project: Immigrant Families and Children's Health: The Intergenerational Health Impact of Federal and State Immigration Policy

**Elisa Rivas**, Undergraduate Student in Psychology  
Faculty Mentor: Dr. Henry Lee, Pediatrics (Neonatal & Developmental Medicine)  
Project: Family Engagement in the NICU for Preterm Babies

**Sangam Sharma**, Undergraduate Student in Human Biology  
Faculty Mentor: Dr. Thomas Robinson, Pediatrics (General Pediatrics) and Medicine (Stanford Prevention Research Center)  
Project: Wise Social Psychological Interventions to Improve Outcomes of Behavioral Weight Control in Children with Obesity



### Uytengsu-Hamilton 22q11 Neuropsychiatry Research Awards \$150K/year for two years

#### Stanford Awards

##### Mark Kay, MD, PhD

Professor, Pediatrics (Human Gene Therapy) and Genetics,  
Stanford School of Medicine  
Study Title: Developing Novel Adeno-associated Virus Vectors for  
Gene Therapy of 22q11.2 Deletion Syndrome

##### Michael Lin, MD PhD

Associate Professor, Neurobiology and Bioengineering, Stanford  
University  
Study Title: Visualizing and Reversing Electrical Abnormalities in a  
Mouse Model of 22q11.2 Deletion Syndrome

##### Anca Pasca, MD

Assistant Professor, Pediatrics (Neonatology), Stanford School of  
Medicine  
Study Title: Identification of Metabolic Disturbances in the  
Developing Brain of Individuals with 22q11.2 Deletion Syndrome

##### Lei Stanley Qi, PhD

Assistant Professor, Bioengineering and Chemical and Systems  
Biology, Stanford University  
Study Title: Systematic Identification and Correction of Genes  
Defining the Neuropsychiatric Phenotype in 22q11 Deletion  
Syndrome Using the CRISPR Toolbox

#### External Awards

##### Therese van Amelsvoort, MD, PhD

Professor, Psychiatry and Neuropsychology, Maastricht University  
Study Title: The Glutamate/GABA Balance as Novel Therapeutic  
Target for Psychotic and Cognitive Symptoms In 22q11.2 Deletion  
Syndrome

##### Stanislav Zakharenko, MD, PhD

Professor, Developmental Neurobiology, St Jude Children's  
Research Hospital  
Study Title: Focal Cerebellar Abnormality in Patients and Mouse  
Models Of 22q11 Deletion Syndrome

### Stanford Pediatric IBD and Celiac Disease Research Awards - Seed Grant \$100K/year for two years

##### Rosa Bacchetta, MD

Associate Professor, Pediatrics (Stem Cell Transplantation)  
Study Title: Engineered Regulatory T Cells as an Autologous  
Immune Modulator for Pediatric Inflammatory Bowel Disease  
(IBD)

##### Dylan Dodd, MD, PhD

Assistant Professor, Pathology and Microbiology & Immunology  
Study Title: Microbiome Metabolites as Predictive Markers of  
Outcomes in Pediatric Crohn's Disease

##### Christopher Garcia, PhD

Professor, Molecular & Cellular Physiology and Structural Biology  
Study Title: Therapeutic Development of Engineered IL-22  
Agonists in IBD

##### Jeong S. Hyun, MD

Assistant Professor, Surgery (Pediatric Surgery)  
Study Title: Characterization of Fibrosis in Crohn's Disease  
through Mesenteric Adipose Tissue

##### Calvin Kuo, MD, PhD

Professor, Medicine (Hematology)  
Study Title: Organoid Modeling of Immune-epithelial Interactions  
in Pediatric Celiac Disease

##### Elizabeth Mellins, MD

Professor, Pediatrics (Human Gene Therapy)  
Study Title: Optimizing TCR-like Reagents for Study of Gliadin  
Presentation

### Stanford Pediatric IBD and Celiac Disease Research Awards - Postdoctoral Support \$80K/year for two years

##### Elias Gerrick, PhD

Postdoctoral Research Fellow, Pathology  
Study Title: Investigation of Divergent Modulation of IBD by  
Symbiotic Protists of the Microbiota

##### Qinghui Mu, PhD

Postdoctoral Research Fellow, Hematology  
Study Title: Organoid Modeling of Immune-epithelial Interaction  
in Pediatric Inflammatory Bowel Disease

## FUNDED PARTNERS AWARDS

### Global Child Health Program

**Awarded a total amount of \$50,000**

#### **Peter Acker, MD, MPH**

Clinical Associate Professor, Emergency Medicine  
Study Title: Development and Testing of a Prehospital Maternal Emergency Obstetric Warning Score (MEOWS) in India

#### **Marshall Burke, PhD**

Associate Professor, Earth System Science  
Study Title: Direct Empirical Estimates of the Health Burden of Air Pollution in Developing Countries

### SPARK

**Awarded a total amount of \$250,000**

#### **Eric Appel, PhD**

Assistant Professor, Materials Science & Engineering  
Study Title: An Ultra-Fast Insulin to Improve the Treatment of Diabetes

#### **Maria Barna, PhD**

Associate Professor, Genetics  
Assistant Professor, Materials Science & Engineering  
Study Title: Identifying Translational Activators for the Treatment of Diamond Blackfan Anemia

#### **Vivek Bhalla, MhD**

Associate Professor, Medicine (Nephrology)  
Study Title: Gene Therapy for Autosomal Dominant Polycystic Kidney Disease

#### **Ami Bhatt, MD, PhD**

Assistant Professor, Medicine (Hematology)  
Study Title: Developing Novel Microbial Integrases as Next-Generation Gene Therapies

#### **Kelly Mahaney, MD, MS**

Assistant Professor, Neurosurgery  
Study Title: Development of Iron Chelation Intraventricular Drug Delivery for Prevention of Post-Hemorrhagic Hydrocephalus (PHH) in Severe Neonatal Intraventricular Hemorrhage (IVH)

### Stanford Byers Center for Biodesign Faculty Fellowship

**Awarded a total amount of \$13,500**

#### **Sabrina Braham, MD**

Clinical Assistant Professor, Pediatrics (General Pediatrics)

#### **Kara Davis Meister, MD**

Clinical Assistant Professor, Otolaryngology (Head & Neck Surgery Divisions)

#### **Rayhan Lal, MD**

Assistant Professor, Pediatrics (Endocrinology and Diabetes) and Medicine (Endocrinology, Gerontology, & Metabolism)

### Stanford Cardiovascular Institute

**Awarded a total amount of \$20,000**

#### **Ronglih Liao, PhD**

Professor, Medicine (Cardiovascular Medicine)  
Study Title: The Heart of the Matter: Functional Impact of Prenatal Nicotine Exposure

#### **Mark Skylar-Scott, PhD**

Assistant Professor, Bioengineering  
Study Title: Development of Optogenetic Thrombin for Light-directed Hemostasis During Unifocalization Surgery

### Stanford Diabetes Research Center

**Awarded a total amount of \$40,000**

#### **Danny Chou, PhD**

Assistant Professor, Pediatrics (Endocrinology & Diabetes)  
Study Title: Next Generation Insulin Therapeutics Enabled by Computational Protein Design

#### **Monique Barakat, MD**

Assistant Professor, Pediatrics (Gastroenterology) and Medicine (Gastroenterology & Hepatology)  
Study Title: Morphological and Molecular/Cellular Profiling of Pancreatic Primary Cilia Across the Human Lifespan and in Pancreatitis

#### **Yair Blumenfeld, MD**

Associate Professor, Obstetrics & Gynecology (Maternal Fetal Medicine)  
Study Title: Fasting Versus Fed: Effect of Oral Intake Prior to the Glucose Tolerance Test in Pregnancy

### Undiagnosed Diseases Network

**Awarded a total amount of \$49,000**

#### **Natalia Gomez-Ospina, MD, PhD**

Assistant Professor, Pediatrics (Medical Genetics and Stem Cell Transplantation)  
Study Title: Generating a Human Cell Tool Kit for Organelle-Specific OMICs Studies

# LEADERSHIP

## MCHRI Governing Board

### **Cynthia J. Brandt, PhD**

President and CEO, Lucile Packard Foundation for Children's Health

### **Jeff Chambers, MBA**

Chair of Governing Board and Chair of Board of Directors, Lucile Packard Children's Hospital Stanford

### **James Dunn, MD, PhD**

Surgeon-in-Chief, Lucile Packard Children's Hospital Stanford; Professor of Surgery (Pediatric Surgery)

### **Paul A. King**

President and CEO, Lucile Packard Children's Hospital Stanford

### **Mary Leonard, MD, MSCE**

Director, MCHRI; Professor and Chair of Pediatrics, Stanford School of Medicine; Physician-In-Chief, Lucile Packard Children's Hospital Stanford

### **Lloyd B. Minor, MD**

Dean, Stanford School of Medicine; Professor of Otolaryngology (Head & Neck Surgery)

### **Anthony Oro, MD, PhD**

Co-Director, MCHRI; Professor of Dermatology, Stanford School of Medicine

### **David K. Stevenson, MD**

Co-Director, MCHRI; Senior Associate Dean for Maternal & Child Health and Professor of Pediatrics (Neonatal & Developmental Medicine), Stanford School of Medicine

## MCHRI Executive Committee

### *Leadership*

### **Mary Leonard, MD, MSCE**

Director, MCHRI

### **Anthony Oro, MD, PhD**

Co-Director, MCHRI

### **David K. Stevenson, MD**

Co-Director, MCHRI

### **Karl Sylvester, MD**

Director of Clinical Research Support Office, MCHRI; Associate Dean for Maternal & Child Health Research and Professor of Surgery (Pediatric Surgery), Stanford School of Medicine

### **Mary M. Chen, MS, MBA**

Executive Director, MCHRI; Assistant Dean for Maternal & Child Health Research, Stanford School of Medicine

### *Members*

### **David Cornfield, MD**

Professor of Pediatrics (Pulmonary Medicine), Stanford School of Medicine

### **James Dunn, MD, PhD**

Surgeon-in-Chief, Lucile Packard Children's Hospital Stanford; Professor of Surgery (Pediatric Surgery); Stanford School of Medicine

### **Michelle Monje-Deisseroth, MD, PhD**

Associate Professor of Neurology & Neurological Sciences; Stanford School of Medicine

### **Thomas Robinson, MD, MPH**

Professor of Pediatrics (General Pediatrics) and of Medicine (Stanford Prevention Research Center); Stanford School of Medicine

### **Kathleen Sakamoto, MD, PhD**

Professor of Pediatrics (Hematology & Oncology); Stanford School of Medicine

### **Virginia Winn, MD, PhD**

Associate Professor of Obstetrics & Gynecology (Reproductive Biology); Stanford School of Medicine

## MCHRI Education Committee

### **Anthony Oro, MD, PhD - Chair**

Co-Director, MCHRI

### **Elizabeth Burgener, MD**

Instructor in Pediatrics (Pulmonary Medicine)

### **Natalia Gomez-Ospina, MD, PhD**

Assistant Professor of Pediatrics (Medical Genetics)

### **Kelly Mahaney, MD**

Assistant Professor of Neurosurgery

### **Melissa Mavers, MD, PhD**

Instructor in Pediatrics (Stem Cell Transplantation)

### **Kara Meister, MD**

Clinical Assistant Professor, Otolaryngology (Head & Neck Surgery Divisions)

### **Trung Pham, MD, PhD**

Instructor in Pediatrics (Infectious Diseases)

### **Thomas Robinson, MD, MPH**

Professor of Pediatrics (General Pediatrics) and of Medicine

### **Ryan Christopher Padrez, MD**

Clinical Associate Professor, Pediatrics - General Pediatrics

### **Sriram Vaidyanathan, PhD**

Instructor in Pediatrics (Stem Cell Transplantation)

### **Virginia Winn, MD, PhD**

Associate Professor of Obstetrics & Gynecology (Reproductive Biology)

## Clinical Research Support Office Executive Advisory Committee

### **Kathleen Bradley, DNP, RN, NEA-BC**

Associate Chief Nursing Officer (ACNO) Practice & Innovation, Informatics Liaison; Executive Director, Center for Professional Excellence & Inquiry, Stanford Children's Health

### **Jesus Cepero, PhD, RN, NEA-BC**

Senior Vice President Patient Care Services and Chief Nursing Officer, Stanford Children's Health

### **Mary M. Chen, MS, MBA**

Executive Director, MCHRI

### **Grace Lee, MD**

Associate Chief Medical Officer for Practice Innovation, Stanford Children's Health; Professor of Pediatrics, Stanford School of Medicine

### **Mary Leonard, MD, MSCE**

Director, MCHRI

### **Dennis Lund, MD**

Chief Medical Officer and Vice President of Medical Affairs, Stanford Children's Health; Associate Dean for Maternal and Child Health, Stanford School of Medicine

### **Ed Kopetsky**

Senior Vice President and Chief Information Officer, Stanford Children's Health

### **Rick Majzun**

Executive Vice President and Chief Operating Officer, Stanford Children's Health

### **Annette Nasr, RN, PhD**

Director of Nursing Research and Evidence-Based Practice, Stanford Children's Health; Clinical Associate Professor of Pediatrics, Stanford School of Medicine

### **Natalie Pageler, MD**

Chief Medical Information Officer, Stanford Children's Health; Clinical Professor of Pediatrics and Clinical Associate Professor of Medicine, Stanford School of Medicine

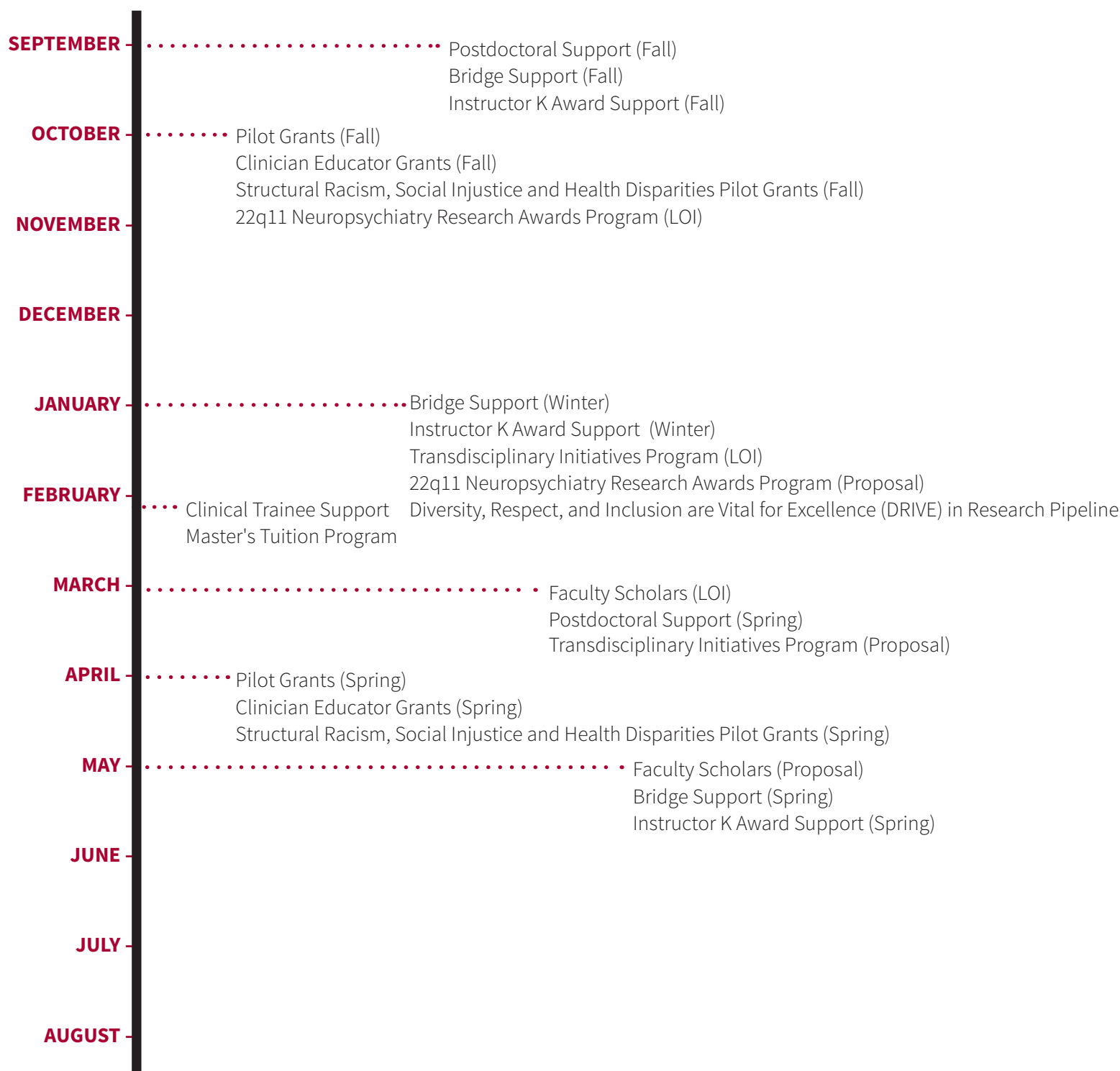
### **Rishi Seth**

Vice President of Operations, Stanford Children's Health

### **Karl Sylvester, MD**

Director of Clinical Research Support Office, MCHRI

# Grants & Programs Timeline



For information about funding programs and deadlines, visit our website at [mchri.stanford.edu](http://mchri.stanford.edu).

# Annual Report FY 2021

## MCHRI ADMINISTRATION

Mary Chen, MS, MBA  
*Executive Director of MCHRI; Assistant Dean for Maternal and Child Health Research, Stanford School of Medicine*

Grant Wells, MS  
Cristina Alfonso  
Grisel Arrue  
Rachael Panizzo, PHD  
Carol Schulze  
Kimberly Stern  
Roxanna Van Norman, MA

## MCHRI CLINICAL RESEARCH SUPPORT OFFICE (CRSO)

Karl Sylvester, MD  
*Director of CRSO; Associate Dean for Maternal and Child Health Research, Stanford School of Medicine*

Alyson Falwell, MPH  
Sijo Thomas, RN, MSN, MBA  
Tricia Ning

## MCHRI CLINICAL RESEARCH CORE

May Zepeda, CCRP  
*Clinical Research Manager*

Julia Buckingham  
Yael Bichman  
Allie DaCar  
Erica Johnston  
Andrea Miranda  
Aisha Nisar  
Elvi Sanjines  
Mariam (Ani) Stephen  
Jessica Whalen

## ACKNOWLEDGEMENTS

Thank you to all of our MCHRI donors, members, leadership, staff, awardees, collaborators, and partners for their support.

Special thanks to our strategic partners, the Lucile Packard Children's Hospital Stanford/Stanford Children's Health, Lucile Packard Foundation for Children's Health, Stanford Health Care, and Stanford School of Medicine.

## Photo/image credit and courtesy of:

Photos courtesy of LPFCH  
Photos courtesy of Pexels  
Photo courtesy of Pixaby  
Photo courtesy of Rawpixel  
Photo courtesy of Unsplash  
Photo thanks to Fruendt Family  
Icons made by Freepik from [www.flaticon.com](http://www.flaticon.com)



**STANFORD**  
**MATERNAL & CHILD HEALTH**  
**RESEARCH INSTITUTE**

800 Welch Road, Palo Alto, CA 94304-5701  
[mchri\\_admin@stanford.edu](mailto:mchri_admin@stanford.edu) | [mchri.stanford.edu](http://mchri.stanford.edu)